

Features



- Fuse holder.
- Applies to FCC part15 and VDE.
- Leak current lower than 0.5mA (250V_{AC}, 60Hz).
- IEC input connector (EN60320).
- Two terminal styles (Faston[®], solder).

| Safety Agency : Standard | | File No. |
|--------------------------|---------------------|-----------------------|
| UL | : UL-1283 | E78644 |
| CSA | : C22.2, No.8-M1986 | LR63931M2 |
| VDE | : VDE0565-3 | 10529-4730-1700, 1701 |

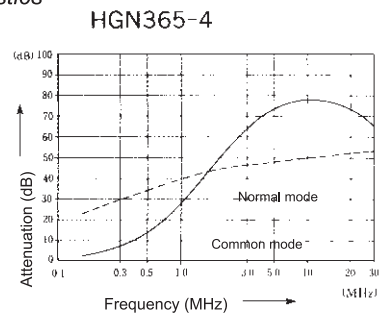
Applications

- PCs, Printers, Measuring devices and Control systems.

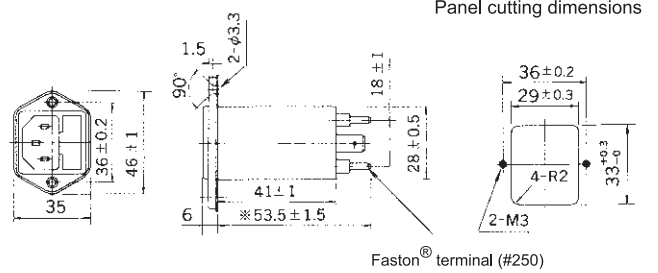
- HGN365-□-F2 Series (Faston[®] terminal)
- HGN365-□-L2 Series (Solder terminal)



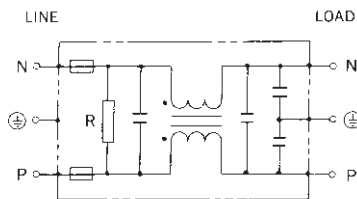
Static characteristics



Dimensions



Circuit



Bleeder resistor R: 1MΩ

Recommended tighten torque less than 0.6N * m. Unit: mm

Electrical Specifications

Rated Voltage **250VAC**

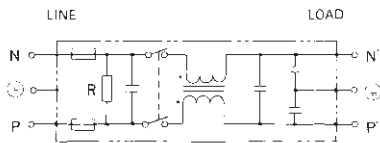
| Safety Agency | Model Number | Rated Current (A) | Test Voltage | Insulation Resistance | Leakage Current (max) | Voltage Drop (max) | Operating Temperature (°C) | Insertion losses | |
|---------------|---------------------------|-------------------|--|---|-------------------------------|--------------------|----------------------------|-------------------|-------------------|
| | | | | | | | | Normal Mode (MHz) | Common Mode (MHz) |
| | HGN365-1- $\frac{F2}{L2}$ | 1 | Line to Ground 1800Vrms 50/60Hz 1sec | Line to Ground 1000MΩmin (at 500V _{DC}) | 0.5mA (at 250Vrms 60Hz) | 1.5Vrms | -25 ~ +40 | 0.9 ~ 30 | 0.2 ~ 30 |
| | HGN365-2- $\frac{F2}{L2}$ | 2 | | | | | | 1.0 ~ 30 | 0.5 ~ 30 |
| | HGN365-4- $\frac{F2}{L2}$ | 4 | | | | | | 2.0 ~ 30 | 2.0 ~ 30 |

Guaranteed attenuation is more than 30dB.

- HGN375-(1, 2, 4)-F2 Series (Faston® terminal) with 2 fuse holders and ON/OFF switch



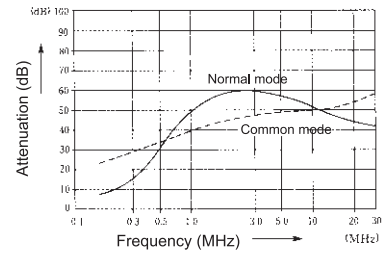
Circuit



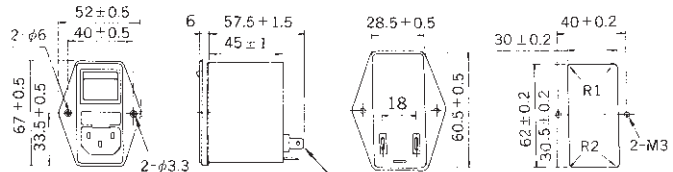
Bleeder resistor R: 1MΩ

Static characteristics

HGN375-4-F2



Dimensions



Panel cutting dimensions

Unit: mm

Faston® terminal (#250)

Recommended torque tightness less than 0.6N · m.

Electrical Specifications

Rated Voltage **250VAC**

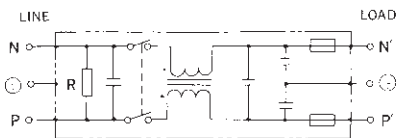
| Safety Agency | Model Number | Rated Current (A) | Test Voltage | Insulation Resistance | Leakage Current (max) | Voltage Drop (max) | Operating Temperature (°C) | Insertion losses | |
|---------------|--------------|-------------------|--|--|-------------------------------|-------------------------------|----------------------------|-------------------|-------------------|
| | | | | | | | | Normal Mode (MHz) | Common Mode (MHz) |
| | HGN375-1-F2 | 1 | Line to Ground 1800Vrms 50/60Hz 1sec | Line to Ground 1000MΩmin (at 500Vdc) | 0.5mA (at 250Vrms 60Hz) | 1.5Vrms 1.0Vrms 1.0Vrms | -25 ~ +40 | 0.4 ~ 30 | 0.2 ~ 30 |
| | HGN375-2-F2 | 2 | | | | | | 0.5 ~ 30 | 0.5 ~ 30 |
| | HGN375-4-F2 | 4 | | | | | | 0.6 ~ 30 | 2.0 ~ 30 |

Guaranteed attenuation is more than 30dB.

- HGN337-(1, 3, 6)-F160 Series with 2 fuse holders and ON/OFF switch



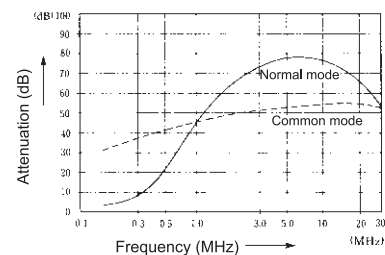
Circuit



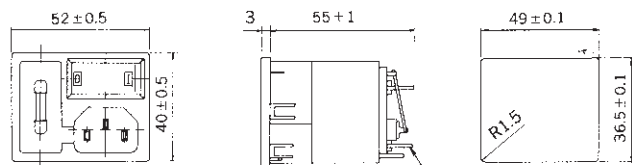
Bleeder resistor R: 1MΩ

Static characteristics

HGN337-3-F160



Dimensions



Panel cutting dimensions

Unit: mm

Faston® terminal (#250)

Electrical Specifications

Rated Voltage **250VAC**

| Safety Agency | Model Number | Rated Current (A) | Test Voltage | Insulation Resistance | Leakage Current (max) | Voltage Drop (max) | Operating Temperature (°C) | Insertion losses | |
|---------------|---------------|-------------------|--|--|-------------------------------|-------------------------------|----------------------------|-------------------|-------------------|
| | | | | | | | | Normal Mode (MHz) | Common Mode (MHz) |
| | HGN337-1-F160 | 1 | Line to Ground 1800Vrms 50/60Hz 1sec | Line to Ground 1000MΩmin (at 500Vdc) | 0.5mA (at 250Vrms 60Hz) | 1.5Vrms 1.0Vrms 1.0Vrms | -25 ~ +40 | 0.9 ~ 30 | 0.2 ~ 30 |
| | HGN337-3-F160 | 3 | | | | | | 1.5 ~ 30 | 1.0 ~ 30 |
| | HGN337-6-F160 | 6 | | | | | | 2.0 ~ 30 | 3.0 ~ 30 |

Guaranteed attenuation is more than 30dB.