

**PLEASE CHECK WWW.MOLEX.COM FOR LATEST PART INFORMATION**

**Part Number:** **0906634163**  
**Status:** **Active**  
**Description:** 2.54mm (.100") Pitch QF-50™ Right Angle, MIL Keying with Latch/Eject Levers, Shrouded Header, 16 Circuits

**Documents:**

[3D Model](#) [Product Specification PS-99020-0015 \(PDF\)](#)  
[Drawing \(PDF\)](#) [RoHS Certificate of Compliance \(PDF\)](#)

**Agency Certification**

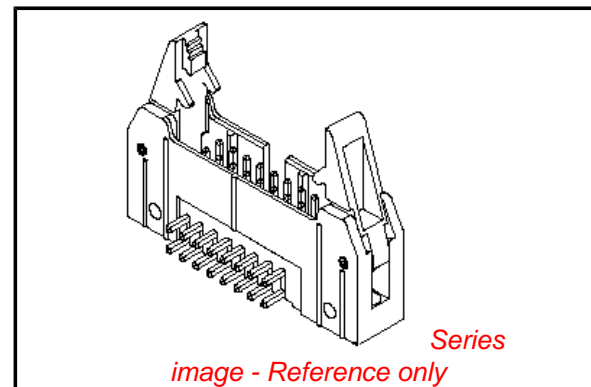
CSA LR19980  
 UL E29179

**General**

Product Family Ribbon Cable / Wire Trap Connectors  
 Series [90663](#)  
 Comments Eject Levers  
 Component Type PCB Header  
 Glow-Wire Compliant No  
 Product Name QF-50™

**Physical**

Circuits (Loaded) 16  
 Color - Resin Black  
 Durability (mating cycles max) 300  
 Entry Angle 90° Angle  
 Flammability 94V-0  
 Lock to Mating Part None  
 Material - Metal Brass  
 Material - Plating Mating Gold  
 Material - Plating Termination Tin  
 Material - Resin Polyester  
 Number of Rows 2  
 PCB Locator No  
 PCB Retention None  
 PCB Thickness Recommended (in) 0.063 In  
 PCB Thickness Recommended (mm) 1.60 mm  
 Packaging Type Tray  
 Pitch - Mating Interface (in) 0.100 In  
 Pitch - Mating Interface (mm) 2.54 mm  
 Pitch - Term. Interface (in) 0.100 In  
 Pitch - Term. Interface (mm) 2.54 mm  
 Plating min: Mating (µin) 10  
 Plating min: Mating (µm) 0.25  
 Plating min: Termination (µin) 118  
 Plating min: Termination (µm) 3  
 Polarized to PCB No  
 Shrouded Fully  
 Stackable No  
 Surface Mount Compatible (SMC) No  
 Temperature Range - Operating -25°C to +85°C  
 Termination Interface: Style Through Hole  
 Wire Insulation Diameter N/A  
 Wire Size AWG N/A  
 Wire/Cable Type Ribbon Cable



**EU RoHS**

**ELV and RoHS  
Compliant**  
**REACH SVHC**  
 Not Reviewed  
**Halogen-Free  
Status**  
**Not Reviewed**

**China RoHS**



**Need more information on product  
environmental compliance?**

Email [productcompliance@molex.com](mailto:productcompliance@molex.com)  
 For a multiple part number RoHS Certificate of Compliance, [click here](#)

Please visit the [Contact Us](#) section for any non-product compliance questions.

**Search Parts in this Series**

90663Series

**Mates With**

**Electrical**

Current - Maximum per Contact  
Voltage - Maximum

1A  
250V AC/DC

**Solder Process Data**

Lead-free Process Capability

Wave Capable (TH only)

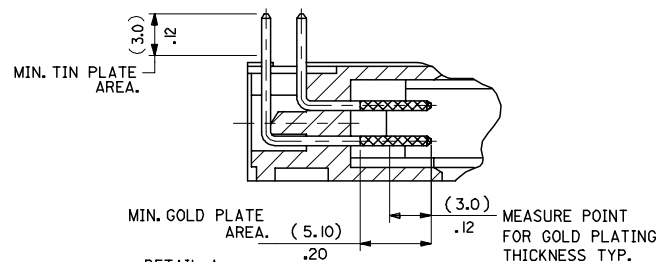
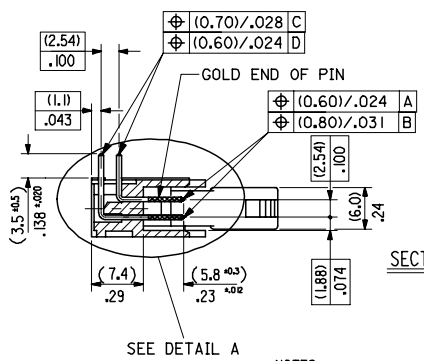
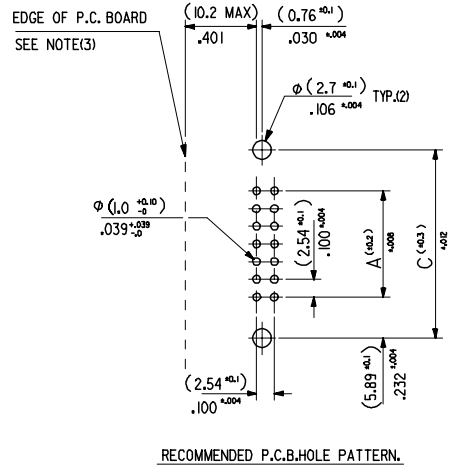
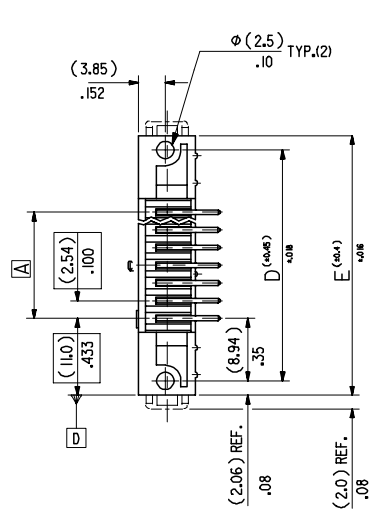
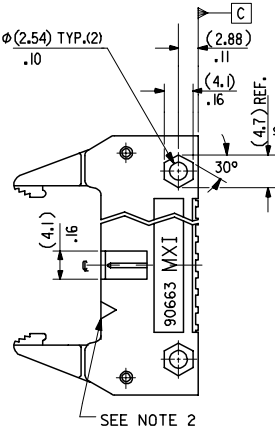
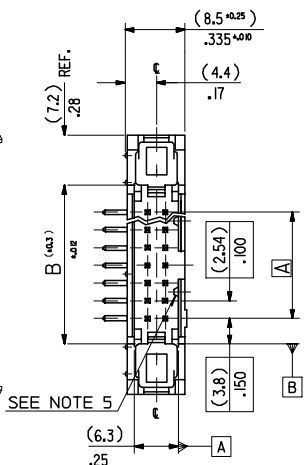
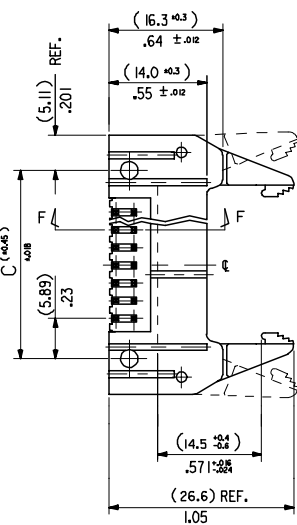
**Material Info****Reference - Drawing Numbers**

Product Specification  
Sales Drawing

PS-99020-0015  
SDA-90663E

This document was generated on 04/13/2010

**PLEASE CHECK [WWW.MOLEX.COM](http://WWW.MOLEX.COM) FOR LATEST PART INFORMATION**



DETAIL A  
DIMENSIONS FOR SELECTIVE  
PLATING'S, SCALE 4:1

**NOTES**

- MATERIAL**  
HEADER : GLASS FILLED POLYESTER (UL 94V0), COLOUR - BLACK.  
PINS : BRASS SIZE  $\square$  (0.635)/.025 .  
LEVER : GLASS FILLED POLYESTER (UL 94V0), COLOUR - BLACK.  
SPRING PINS : STEEL
- COLOUR IDENTIFICATION MARK FOR PLATING OPTIONS.**  
90663-4\*\*3, (1um)/.039uin MIN. NICKEL UNDERPLATE. CONTACT AREA  
G53 PLATING (0.25um)/.010uin MIN. GOLD. SOLDER AREA (3um)/.118uin MIN.  
TIN. COLOUR MARK: BLUE.
- 10.2mm MAX. TO EDGE OF PCB FOR DAISY CHAIN APPLICATIONS.
- PRODUCT SPECIFICATION NO.: PS-99020-0015
- THIS RIB IS NOT PRESENT ON 10 & 14 CKT PARTS
- RECOMMENDED PCB THICKNESS 1.6mm

|               |               |               |               |               |                         |                 |
|---------------|---------------|---------------|---------------|---------------|-------------------------|-----------------|
| (60.96)/2.400 | (68.56)/2.700 | (72.74)/2.864 | (78.84)/3.104 | (82.96)/3.266 | 90663-4503              | 50              |
| (48.26)/1.900 | (55.86)/2.200 | (60.04)/2.364 | (66.14)/2.604 | (70.26)/2.766 | 90663-4403              | 40              |
| (17.78)/.700  | (25.38)/1.000 | (29.56)/1.164 | (35.66)/1.404 | (39.78)/1.566 | 90663-4163              | 16              |
| (10.16)/.400  | (17.76)/.700  | (21.94)/.864  | (28.04)/1.104 | (32.16)/1.266 | 90663-4103              | 10              |
| A             | B             | C             | D             | E             | ENG. NO.<br>G53 PLATING | NO. OF<br>CKTS. |

| <b>ADDED NOTE 6</b><br>EC NO. E2008-0129<br>DRAWN BY: DRW:WLB/RYNES 2007/09/13<br>CHKD: CHFKO: 2007/09/13<br>APPR: EOM/AMHONY 2007/09/14<br>REV: DESCRIPTION | <b>QUALITY SYMBOLS</b><br>$\nabla=0$<br>$\nabla=0$ | <b>GENERAL TOLERANCES (UNLESS SPECIFIED)</b><br><table border="1"> <tr> <th></th> <th>mm</th> <th>INCH</th> </tr> <tr> <td>4 PLACES</td> <td>± ---</td> <td>± ---</td> </tr> <tr> <td>3 PLACES</td> <td>± ---</td> <td>± .008</td> </tr> <tr> <td>2 PLACES</td> <td>± 0.20</td> <td>± .008</td> </tr> <tr> <td>1 PLACE</td> <td>± 0.20</td> <td>± ---</td> </tr> </table> |                           | mm  | INCH                | 4 PLACES                   | ± --- | ± --- | 3 PLACES | ± --- | ± .008 | 2 PLACES | ± 0.20 | ± .008 | 1 PLACE | ± 0.20 | ± --- | <b>DIMENSION STYLE</b><br>MM/IN | <b>SCALE</b><br>2:1 | <b>DESIGN UNITS</b><br>METRIC | <b>THIRD ANGLE PROJECTION</b> |
|--|--|---|---------------------------|---|---------------------|----------------------------|-------|-------|----------|-------|--------|----------|--------|--------|---------|--------|-------|---------------------------------|---------------------|-------------------------------|-------------------------------|
|  |  | mm  | INCH                      |   |                     |                            |       |       |          |       |        |          |        |        |         |        |       |                                 |                     |                               |                               |
|  | 4 PLACES   | ± ---   | ± ---                     |   |                     |                            |       |       |          |       |        |          |        |        |         |        |       |                                 |                     |                               |                               |
|  | 3 PLACES   | ± ---   | ± .008                    |   |                     |                            |       |       |          |       |        |          |        |        |         |        |       |                                 |                     |                               |                               |
| 2 PLACES   | ± 0.20   | ± .008  |                           |   |                     |                            |       |       |          |       |        |          |        |        |         |        |       |                                 |                     |                               |                               |
| 1 PLACE  | ± 0.20   | ± ---   |                           |   |                     |                            |       |       |          |       |        |          |        |        |         |        |       |                                 |                     |                               |                               |
|  |  | <b>DRAWN BY</b><br>CPHEHIR  | <b>DATE</b><br>2000/09/15 | <b>TITLE</b><br>QF50 SRD HDR RA SRF<br>W/ELV .25 AU |                     |                            |       |       |          |       |        |          |        |        |         |        |       |                                 |                     |                               |                               |
|  |  | <b>CHECKED BY</b><br>ROCONNOR   | <b>DATE</b><br>2000/09/15 | <b>MOLEX INCORPORATED</b>                           |                     |                            |       |       |          |       |        |          |        |        |         |        |       |                                 |                     |                               |                               |
|  |  | <b>APPROVED BY</b><br>MWILHITE  | <b>DATE</b><br>2000/09/15 | <b>MATERIAL NO.</b><br>SDA-90663E                   | <b>DOCUMENT NO.</b> | <b>SHEET NO.</b><br>6 OF 9 |       |       |          |       |        |          |        |        |         |        |       |                                 |                     |                               |                               |

DRAFT WHERE APPLICABLE MUST REMAIN WITHIN DIMENSIONS

SEE CHART

THIS DRAWING CONTAINS INFORMATION THAT IS PROPRIETARY TO MOLEX INCORPORATED AND SHOULD NOT BE USED WITHOUT WRITTEN PERMISSION