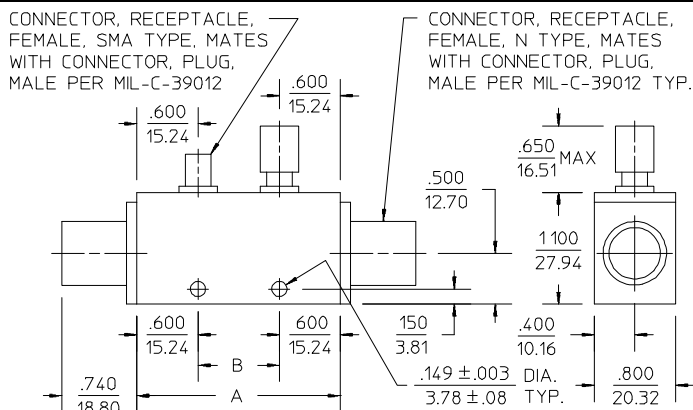


**PRINCIPAL SPECIFICATIONS**

Model Number	Frequency Range, GHz	Nominal Coupling, ± dB	Frequency Sensitivity, dB, Max.	Directivity, dB, Min.	*Insertion Loss, dB, Max.	VSWR, Main Line, Outline Max.	Ref.
CBN-30M-1.5G	1.0 - 2.0	30 ± 1	± 0.75	18	0.2	1.15:1	4
CBN-30M-3G	2.0 - 4.0	30 ± 1	± 0.75	18	0.2	1.15:1	2
CBN-30M-4G	2.6 - 5.2	30 ± 1	± 0.75	18	0.2	1.20:1	2
CBN-30M-6G	4.0 - 8.0	30 ± 1	± 0.75	18	0.2	1.30:1	1
CBN-30M-8G	5.0 - 11.0	30 ± 1	± 0.50	15	0.2	1.30:1	1
CBN-30M-9G	7.0 - 11.0	30 ± 1	± 0.50	16	0.2	1.30:1	1
CCN-30M-2G	1.0 - 4.0	30 ± 1	± 0.60	15	0.2	1.15:1	5
CCN-30M-3G	1.5 - 4.5	30 ± 1	± 0.60	18	0.2	1.20:1	4
CCN-30M-5G	2.0 - 8.0	30 ± 1	± 0.60	16	0.2	1.30:1	3
CCN-35M-6G	1.0 - 11.0	35 ± 1.5	± 1.50	15	0.2	1.30:1	5
CCN-30M-8G	4.0 - 12.0	30 ± 1	± 0.60	15	0.2	1.30:1	2

± Coupling is referenced to the input and includes frequency sensitivity

\* Insertion Loss including Coupling "Loss"



OUTLINE	A	B	WT. OZ. (G)
1	2.000 50.80	.800 20.32	4.66 (132)
2	2.500 63.50	1.300 33.02	5.29 (150)
3	3.000 76.20	1.800 45.72	5.93 (168)
4	3.500 88.90	2.300 58.42	6.56 (186)
5	3.850 97.79	2.650 67.31	7.05 (200)

NOTES:  
1. Tolerance on 3 place decimals ±.020(.51) except as noted.  
2. Dimensions in inches over millimeters.

20Feb96

**GENERAL SPECIFICATIONS**

Peak Power: 10 kW max.  
 CW Input: 600 W max.  
 Impedance: 50 Ω nom.  
 Operating Temperature: -55° to +85°C  
 Other Coupling Values: Available  
 Other Frequency Bands: Available

**General Notes:**

- The octave band CBN series and multi-octave CCN series of high power Directional Couplers are designed to monitor signals with minimal perturbation to the main line. Each coupler uses air-line coupling technology for simple reliable operation. They are well suited to transmitter carrier power monitoring, leveling and VSWR protection circuits.
- These units comply with MIL-C-15370 and can be supplied screened for compliance with additional specifications you designate for military and aerospace applications requiring higher reliability.