



# TAI-SAW TECHNOLOGY CO., LTD.

No. 3, Industrial 2nd Rd., Ping-Chen Industrial District,  
Taoyuan, 324, Taiwan, R.O.C.  
TEL: 886-3-4690038 FAX: 886-3-4697532  
E-mail: [tstsales@mail.taisaw.com](mailto:tstsales@mail.taisaw.com) Web: [www.taisaw.com](http://www.taisaw.com)

## Approval Sheet For Product Specification

Issued Date:


Product Name: SAW Filter 1440MHz SMD 3.0×3.0mm

TST Parts No.: TA0930A

Customer Parts No.: \_\_\_\_\_

Company: _____
Division: _____
Approved by : _____
Date: _____

Checked by: Asin Lin 

Approval by: Francis Chen 

Date: 2008/10/24



# TAI-SAW TECHNOLOGY CO., LTD.

No. 3, Industrial 2nd Rd., Ping-Chen Industrial District,  
Taoyuan, 324, Taiwan, R.O.C.

TEL: 886-3-4690038 FAX: 886-3-4697532

E-mail: [tstsales@mail.taisaw.com](mailto:tstsales@mail.taisaw.com) Web: [www.taisaw.com](http://www.taisaw.com)

## SAW Filter 1440 MHz

MODEL NO.: TA0930A

REV. NO.:1

### A. MAXIMUM RATING:

1. Input Power Level: 10 dB<sub>m</sub>
2. DC voltage: 5 V
3. Operating Temperature: -25°C to 85°C
4. Storage Temperature: -40°C to +85° C

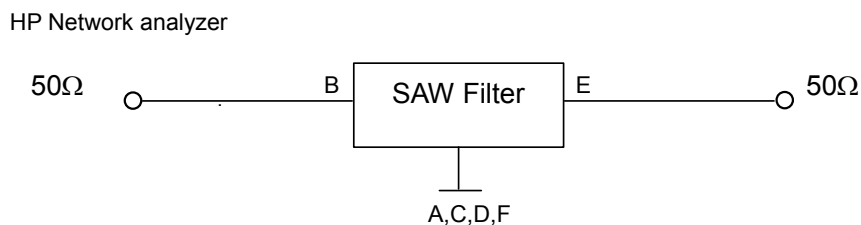
RoHS Compliant  
Lead free  
Lead-free soldering

### B. CHARACTERISTICS:

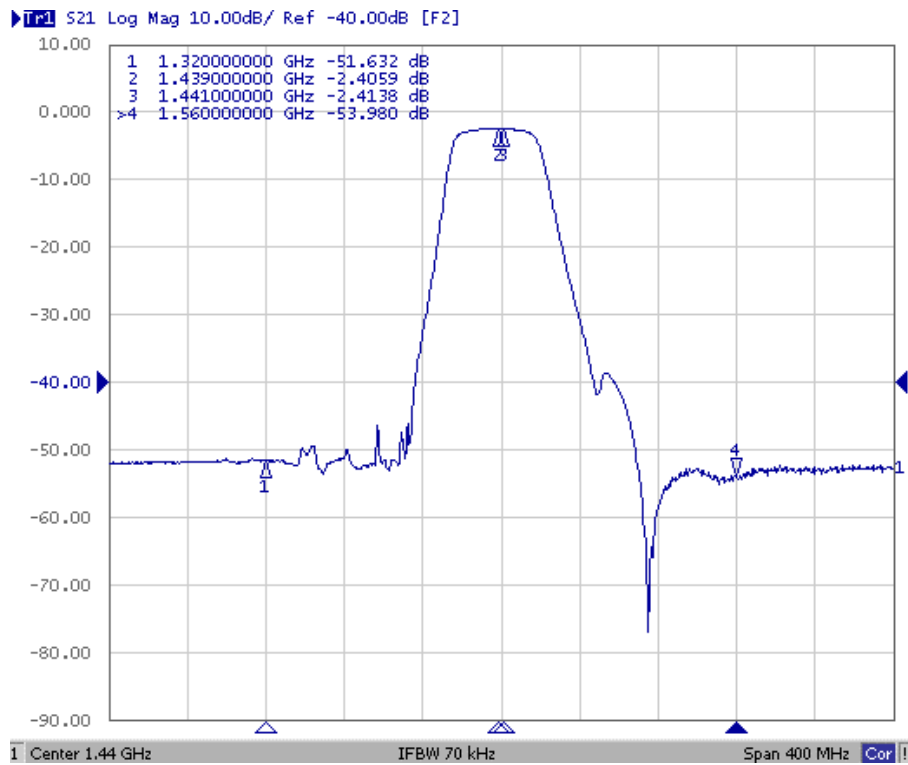
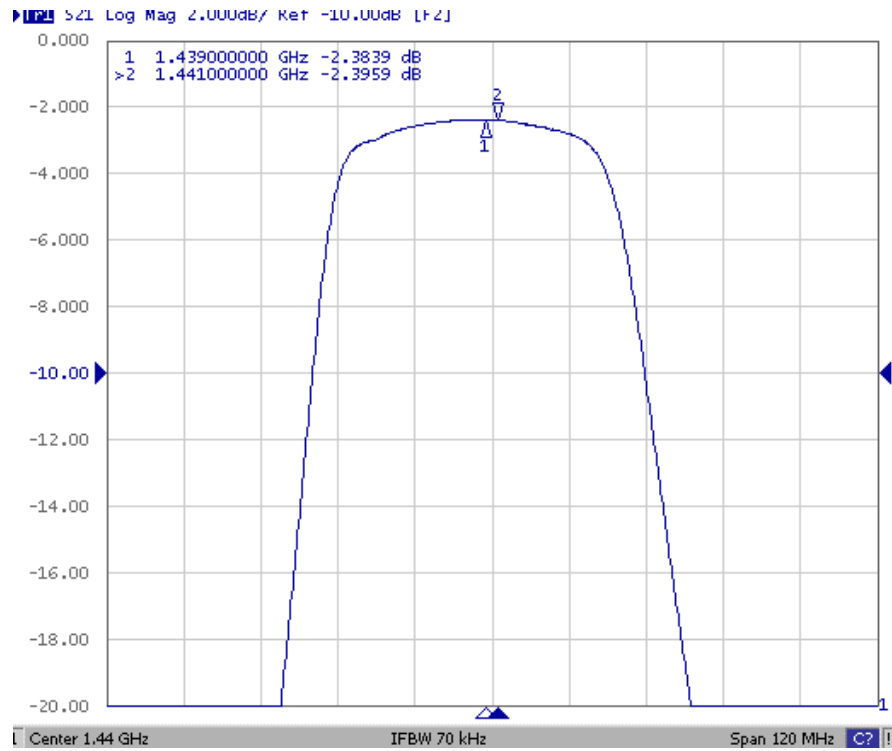
Item		Unit	Specification		
			Min.	Typ.	Max.
Center Frequency	Fc	MHz	-	1440	-
Insertion Loss	1439~1441 MHz	dB	-	2.9	4.6
Amplitude ripple (p-p)	Fc±1 MHz	dB		0.7	2.0
Rejection (referent to IL)					
	Fc-120 MHz	dB	30	45	-
	Fc+120 MHz	dB	30	45	-

Note1. No matching network required for operation at 50Ω

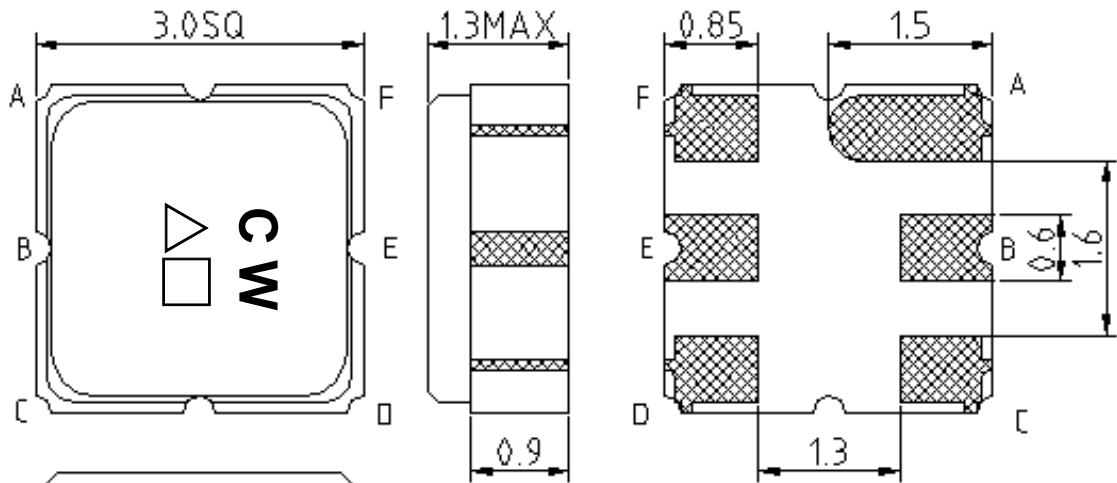
### C. MEASUREMENT CIRCUIT:



## D. TRANSFER FUNCTION :

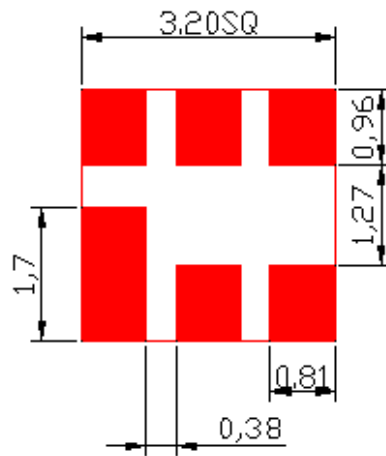


**E.OUTLINE DRAWING:**



B: Input  
 E: Output  
 A,C,D,F: Ground  
 △: Year code(8 for 2008,9 for 2009,...)  
 □: Date code code (Provided by planer each year)  
 Unit: mm

**F.PCB FOOTPRINT:**





### H.RECOMMENDED REFLOW PROFILE:

