



**Data Sheet**



Product Category: RF SAW Filter

Part Number	Package	Application	Last Modified
805-RF433.92M-D	5.0 x 5.0 SMD	Remote Control	Jan. 01, 2007

TYPE :

Remote Control, RF SAW Filter



PART NUMBER :

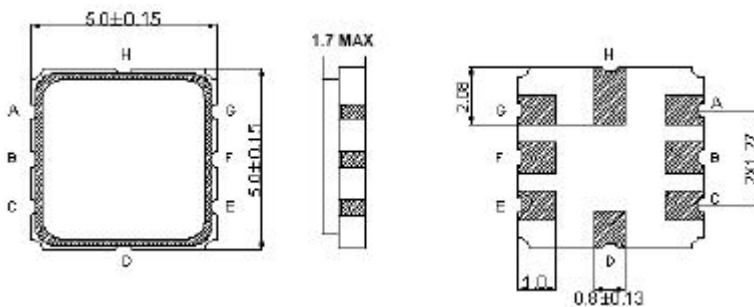
**805-RF433.92M-D**

**OPERATING CONDITIONS / ELECTRICAL CHARACTERISTICS**

PARAMETERS	Condition	Minimum	Typical	Maximum	Units
Center Frequency (Fo)	-	-	433.92	-	MHz
Maximum Insertion Loss	433.80~ 434.12 MHz	-	2.0	4.5	dB
Relative Attenuation:	10.0 ~ 414.0 MHz	45	50	-	dB
	414.0~ 428.0 MHz	40	45	-	
	428.0 ~ 432.92MHz	15	20	-	
	434.92 ~ 442.0 MHz	10	15	-	
	442.0 ~ 550.0 MHz	35	40	-	
	550.0 ~ 1000.0 MHz	45	50	-	
Source Impedance (single ended)*	-	-	50	-	ohm
Load Impedance (single ended)*	-	-	50	-	ohm
Pass Band Ripple	433.76~ 434.16 MHz	-	1.0	2.0	-
Maximum DC Voltage	-	-	-	10	V
Maximum Input Power	-	-	-	10	dBm
Operating Temperature	-	-40	-	+85	°C

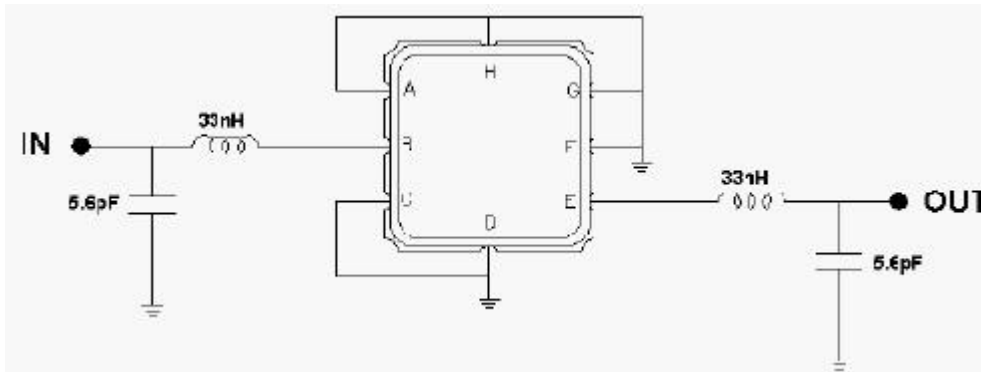
\* With Matching Network

**PACKAGE OUTLINE (mm)**



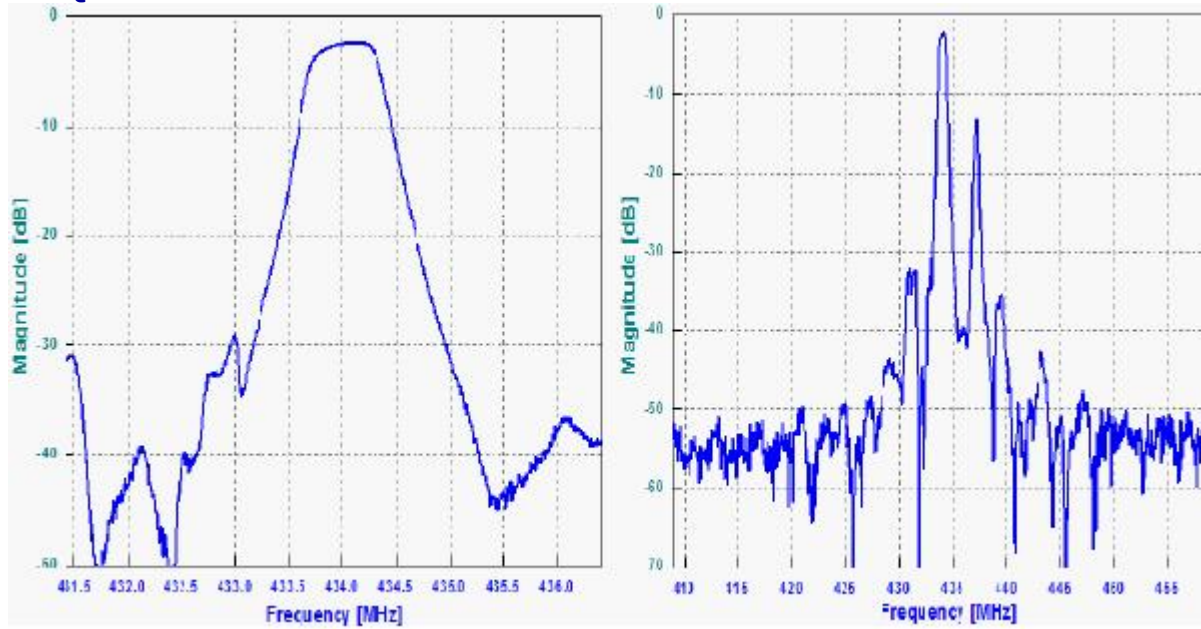
PIN LAYOUT	
A	Ground
B	In
C	Ground
D	Ground
E	Out
F	Ground
G	Ground
H	Ground

**TEST FIXTURE**



Source/ Load Impedance = 50 ohms

### FREQUENCY RESPONSE



**Oscilent Corporation** - CALL **949.252.0522**

18195 East McDermott Street, Building D, Irvine, CA 92614, USA  
 Fax: 949.252.0599, E-Mail: Sales@Oscilent.com

**Part No.:** 805-RF433.92M-D