



**Data Sheet**



Product Category: IF SAW Filter

Part Number  
**835-IF65.0M-D**

Package  
35.0 x 12.8 Thru Hole

Application  
Base Station & Repeater

Last Modified  
May 30 2003

**TYPE :**

65.0 MHz Bandpass Filter  
19.30 MHz Bandwidth

**PART NUMBER :**

**835-IF65.0M-D**

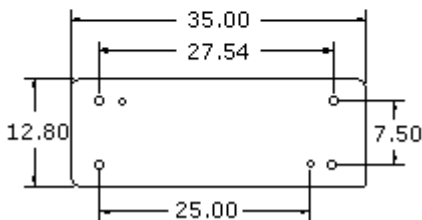
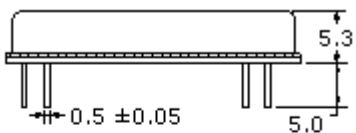


**OPERATING CONDITIONS / ELECTRICAL CHARACTERISTICS**

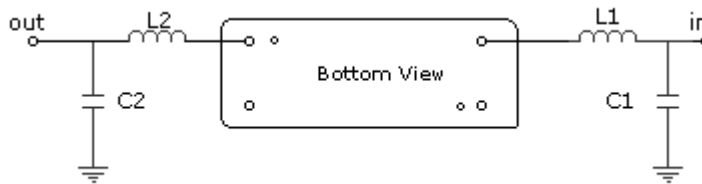
PARAMETERS	Minimum	Typical	Maximum	Units
Center Frequency	64.92	65.00	65.08	MHz
Insertion Loss	-	24.5	26.0	dB
1dB Bandwidth	19.10	19.30	-	MHz
3dB Bandwidth	19.30	19.60	-	MHz
40dB Bandwidth	-	20.80	20.90	MHz
Passband Ripple	-	0.6	1.0	dB
Group Delay Variation	-	70	120	nsec
Absolute Delay	-	2.87	-	µsec
Ultimate Rejection	50	55	-	dB
Substrate Material	-	LN	-	-
Ambient Temperature	-	25	-	°C

\* Custom SAW IF Filters available. Contact Oscilent for assistance.

**PACKAGE OUTLINE (mm)**



**TEST FIXTURE**



L1 = 220nH      C1 = 36pF  
L2 = 220nH      C2 = 43pF  
Source/Load Impedance = 50 ohms

**Part No.:** 835-IF65.0M-D

**Oscilent Corporation** - CALL **949.252.0522**

17962 Sky Park Circle . Building D . Irvine . CA 92614 . USA  
Fax: 949.252.0599 . E-Mail: Sales@Oscilent.com

---

[Crystal Oscillators](#) | [Quartz Crystal](#) | [TCXO](#) | [VCXO](#) | [IF SAW Filter](#) | [RF SAW Filter](#) | [Ceramic Resonator](#)  
[Crystal Filter](#) | [Ceramic Filter](#) | [SAW Filter / SAW Devices](#) | [Site Map](#)