

## M24758/15 Adapter for MIL-C-24235 Stuffing Tubes

### M24758/15-B-04-A

Basic Part No. \_\_\_\_\_

Stuffing Tube Size Code \_\_\_\_\_

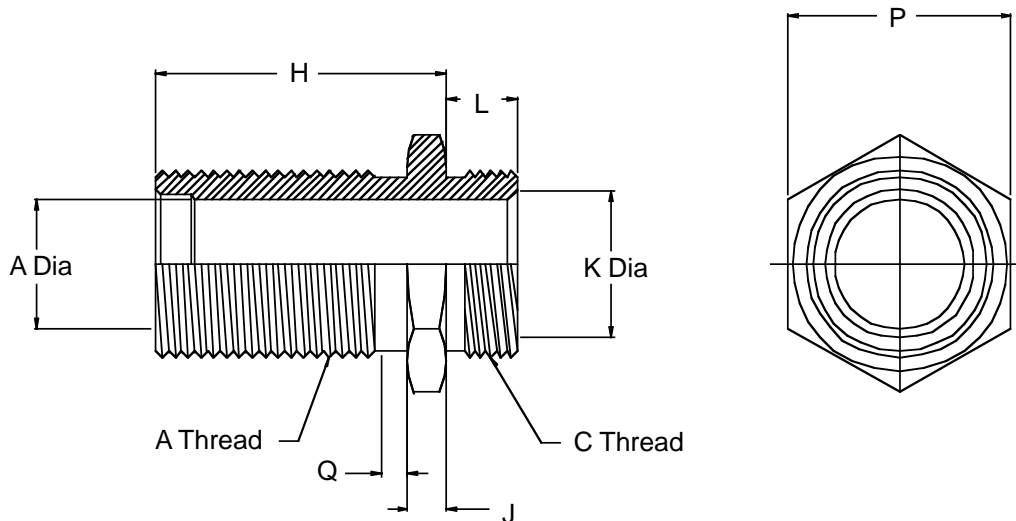
Conduit Size Code \_\_\_\_\_

Material Designator:

A = Aluminum

B = Brass

C = CRES 316



1. The M24758/15 adapter couples MIL-S-24235/9 through MIL-S-24235/17 stuffing tubes to M24758/2, M24758/3, or M24758/4 fittings.
2. Any combination of conduit and stuffing tube sizes may be used by identifying the appropriate conduit size and stuffing tube size in the part number configuration.
3. Metric dimensions (mm) are indicated in parentheses.
4. For complete dimensions see applicable Military Specification.

# M24758/15 Adapter for MIL-C-24235 Stuffing Tubes



**TABLE I**

Conduit Size Code	C Thread (Class 2A)	L ±.02	L (.5)	K Dia Min.
02	0.438 - 28 UNEF	.210	(5.3)	.250 (6.4)
03	0.563 - 24 UNEF	.250	(6.4)	.370 (9.4)
04	0.688 - 24 UNEF	.250	(6.4)	.500 (12.7)
05	0.813 - 20 UNEF	.310	(7.9)	.620 (15.7)
06	0.938 - 20 UNEF	.310	(7.9)	.750 (19.1)
08	1.250 - 18 UNEF	.370	(9.4)	1.000 (25.4)
10	1.563 - 18 UNEF	.370	(9.4)	1.250 (31.8)
12	1.875 - 16 UN	.430	(10.9)	1.500 (38.1)
16	2.375 - 16 UN	.430	(10.9)	2.000 (50.8)
20	2.875 - 16 UN	.430	(10.9)	2.500 (63.5)
24	3.375 - 16 UN	.430	(10.9)	3.000 (76.2)

**TABLE II**

MIL-S-24235 Stuffing Tube Size	Conduit Size Code	A Thread (Class 2A)	A Dia	H ±.02	H (.5)	J ±.02	J (.5)	P Dim (Minimum)	Q ±.02	Q (.5)
A	03	0.875 - 12 UN	.406 (10.3)	1.063 (27.0)	.188 (4.8)	1.031 (26.2)	.188 (4.8)			
B	04	1.000 - 12 UN	.515 (13.1)	1.063 (27.0)	.188 (4.8)	1.125 (28.6)	.188 (4.8)			
C	04,05,06	1.125 - 12 UN	.640 (16.3)	1.063 (27.0)	.188 (4.8)	1.250 (31.8)	.188 (4.8)			
D	06	1.250 - 12 UN	.750 (19.1)	1.063 (27.0)	.188 (4.8)	1.375 (34.9)	.188 (4.8)			
E	06	1.250 - 12 UN	.812 (20.6)	1.063 (27.0)	.188 (4.8)	1.375 (34.9)	.188 (4.8)			
F	08	1.313 - 12 UN	.843 (21.4)	1.188 (30.2)	.188 (4.8)	1.438 (36.5)	.188 (4.8)			
G	08	1.500 - 12 UN	.935 (23.7)	1.188 (30.2)	.188 (4.8)	1.656 (42.1)	.188 (4.8)			
J	10	1.625 - 12 UN	1.062 (27.0)	1.188 (30.2)	.188 (4.8)	1.781 (45.2)	.188 (4.8)			
K	10	1.750 - 12 UN	1.171 (29.7)	1.500 (38.1)	.188 (4.8)	1.875 (47.6)	.188 (4.8)			
L	10	1.813 - 12 UN	1.265 (32.1)	1.500 (38.1)	.188 (4.8)	1.938 (49.2)	.188 (4.8)			
M	10,12	2.000 - 12 UN	1.406 (35.7)	1.500 (38.1)	.250 (6.4)	2.188 (55.6)	.188 (4.8)			
N	12	2.063 - 12 UN	1.515 (38.5)	1.563 (39.7)	.250 (6.4)	2.250 (57.2)	.188 (4.8)			
P	16	2.188 - 12 UN	1.625 (41.3)	1.563 (39.7)	.250 (6.4)	2.344 (59.5)	.188 (4.8)			
R	16	2.313 - 12 UN	1.750 (44.5)	1.563 (39.7)	.250 (6.4)	2.469 (62.7)	.188 (4.8)			
S	16	2.688 - 12 UN	1.875 (47.6)	2.188 (55.6)	.313 (8.0)	2.813 (71.5)	.250 (6.4)			
T	16	2.875 - 12 UN	2.062 (52.4)	2.188 (55.6)	.313 (8.0)	2.969 (75.4)	.250 (6.4)			
V	16	3.000 - 12 UN	2.187 (55.5)	2.188 (55.6)	.313 (8.0)	3.094 (78.6)	.250 (6.4)			
W	16,20	3.125 - 12 UN	2.312 (58.7)	2.188 (55.6)	.313 (8.0)	3.281 (83.3)	.250 (6.4)			
X	20	3.250 - 12 UN	2.500 (63.5)	2.188 (55.6)	.313 (8.0)	3.438 (87.3)	.250 (6.4)			
Y	20	3.375 - 12 UN	2.609 (66.3)	2.188 (55.6)	.313 (8.0)	3.563 (90.5)	.250 (6.4)			
Z	20	3.563 - 12 UN	2.781 (70.6)	2.188 (55.6)	.313 (8.0)	3.750 (95.3)	.250 (6.4)			
AA	20,24	3.750 - 12 UN	2.875 (73.0)	3.125 (79.4)	.438 (11.1)	3.875 (98.4)	.250 (6.4)			
BB	24	4.000 - 12 UN	3.157 (80.2)	3.125 (79.4)	.438 (11.1)	4.125 (104.8)	.250 (6.4)			