



## IDC

## IDC DIP PLUG (TRANSITION) 2.0mm

- Industry compatible
- Competitively priced
- Various Plating contacts available
- 2.0mm pitch



## SPECIFICATION

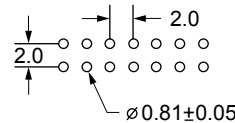
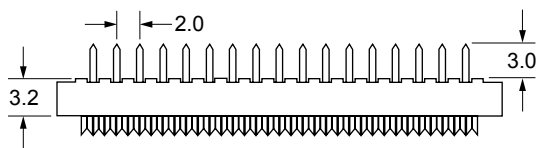
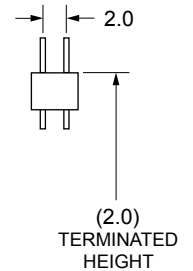
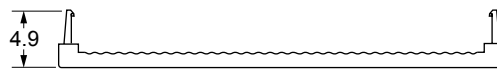
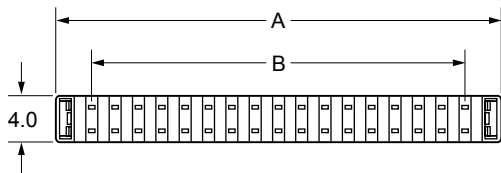
### Material & Finish

<b>Contact Material:</b>	Phosphor Bronze
<b>Insulator Material:</b>	PBT, glass reinforced, rated UL 94V-0
<b>Current Rating:</b>	1 Amp
<b>Contact Resistance:</b>	30M $\Omega$ Max.
<b>Insulator Resistance:</b>	3000M $\Omega$ Min.
<b>Dielectric Withstanding Voltage:</b>	250V AC for One Minute
<b>Operating Temperature:</b>	-40°C to + 105°C

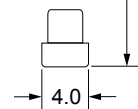
Terminated with 1.00mm pitch flat ribbon cable

Position	A	B
8	12.20	6.00
10	14.20	8.00
12	16.20	10.00
14	18.20	12.00
16	20.20	14.00
20	24.20	18.00
22	26.20	20.00
24	28.20	22.00
26	30.20	24.00
30	34.20	28.00
34	38.20	32.00
40	44.20	38.00
44	48.20	42.00
50	54.20	48.00
68	72.20	66.00

## OUTLINE DRAWING



RECOMMENDED P.C.B LAYOUT



## ORDERING INFORMATION

DBC	IDC	A11A	34	B	G	1
Dubilier Connectors	IDC Connector	Series	N° of Ways	Contact Material	Contact Plating	Colour
			08=08way 10=10way 12=12way 14=14way 20=20way 22=22way 24=24way	B=Phosphor Bronze	G= Gold Flash S=Selective *=Other Plating available	1=Black
			26=26way 30=30way 34=34way 40=40way 44=44way 50=50way 68=68way			