

IEC Appliance Inlet C14 with Filter, Fuseholder 1- or 2-pole, for PCB Mounting

Standard- or Medical-Filter and
-Fuse drawer

C14



70° C

**Description**

- Panel Mount:
Screw-on mounting on PCB, from rear-side
- 3 Functions:
Appliance Inlet, Fuseholder for fuse-links 5 x 20 mm, Line filter in standard and medical version
- PCB solder terminals
- Alternative: version for panel mounting [KFA](#)

Approvals

- VDE License Number: 40001522
- UL License Number: E72928

Characteristics

- Ultra-compact design
- All single elements are already wired
- For added safety "Extra-Safe" fuse drawers are available
Fuse drawer meets requirements of medical standard IEC/EN 60601-1
The fuseholder is accessible from the equipment front
- Qualified for use in equipment according IEC/EN 60950

Other versions on request

- Fixing on PCB with self-tapping screws 3 mm or pre-inserted nuts M3
- Fuse drawer 1-pole, plus spare fuse case
- Fuse drawer 2-pole, with shorting bar
- Medical version M80, 220 nF X capacitors
- Class X1- and Y1-capacitors for enhanced withstand voltage
- Protection class II, 70°C

References[General Product Information](#)**Weblinks**

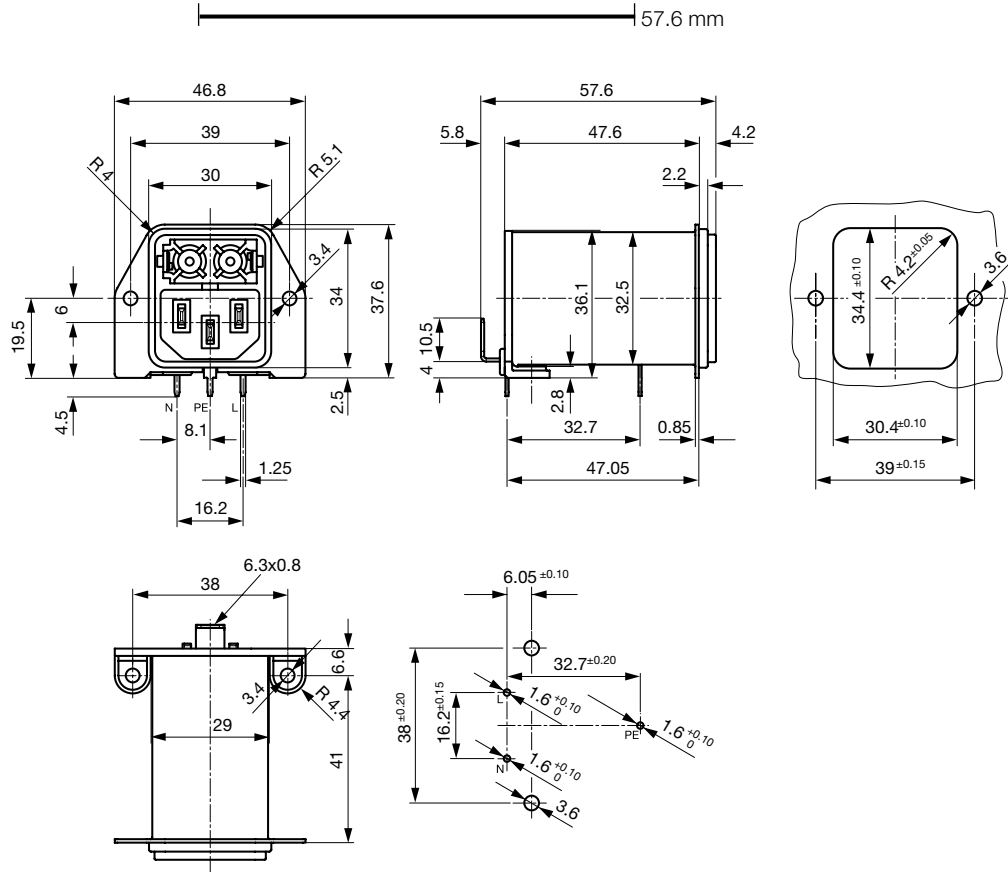
[Approvals](#), [RoHS](#), [CHINA-RoHS](#), [Mating Connectors](#), [e-Store](#),
[Distributor-Stock-Check](#), [Accessories](#)

Technical Data

| | | | |
|---------------------------|--|--------------------------------------|---|
| Ratings IEC | 1 - 10A @ Ta 40 °C / 250 VAC; 50Hz | Appliance-Inlet/-Outlet | C14 acc. to IEC/EN 60320-1 UL 498 CSA C22.2 no. 42 (for cold conditions) pin-temperature 70 °C, 10A, Protection Class 1 |
| Ratings UL/CSA | 1 - 10A @ Ta 40 °C / 125/250VAC; 50/60Hz ¹⁾ | Fuseholder | 1 or 2 pole, Shocksafe category PC2 acc. to IEC 60127-6, for fuse-links 5 x 20mm |
| Leakage Current | standard < 0.5 mA (250 V / 60Hz) medical < 5 µA (250 V / 60 Hz) | Rated Power Acceptance @ Ta 23 °C | 5 x 20: 2W (1 pole)/ 1.4W (2-pole) per pole |
| Dielectric Strength | > 1.7 kVDC between L-N > 2.7 kVDC between L/N-PE Test voltage (1 min/50Hz) | Power Acceptance @ Ta > 23°C | Admissible power acceptance at higher ambient temperature see derating curves |
| Allowable Operation Temp. | -25 °C to 85 °C | Line Filter | Standard and Medical Version, IEC 60939, IEC 60601-1, UL 1283, UL 544, EN 133 200, CSA C22.2 no. 8 Technical details |
| Climatic Category | 25/085/21 acc. to IEC 60068-1 | MTBF | > 2'000'000h acc. to MIL-HB-217 F |
| Degree of Protection | from front side IP 40 acc. to IEC 60529 | | |
| Protection Class | Suitable for appliances with protection class 1 acc. to IEC 61140 | | |
| Terminal | For PCB mounting ; Additional for ground terminal: Quick connect terminals 6.3 x 0.8 mm angled to pin axis | | |
| Panel Thickness s | Screw-on mounting: max 3mm Mounting screw torque max 0.5Nm | | |
| Material: Housing | Thermoplastic, black, UL 94V-0 | | |

1) UL approvals: 1-pole versions up to 10 A, 2-pole versions up to 8 A

Dimensions



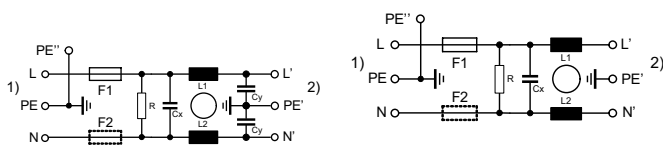
Technical Data of Filter-Components

| Rated Current [A] | Filter-Type | Inductances L [mH] | Capacitance CX [nF] | Capacitance CY [nF] | R [MΩ] |
|-------------------|--------------------------------------|--------------------|---------------------|---------------------|--------|
| 1 | Standard Version with Bleed Resistor | 2 x 10 | 100 | 2.2 | 1 |
| 2 | Standard Version with Bleed Resistor | 2 x 4 | 100 | 2.2 | 1 |
| 4 | Standard Version with Bleed Resistor | 2 x 1.5 | 100 | 2.2 | 1 |
| 6 | Standard Version with Bleed Resistor | 2 x 0.8 | 100 | 2.2 | 1 |
| 8 | Standard Version with Bleed Resistor | 2 x 0.6 | 100 | 2.2 | 1 |
| 10 | Standard Version with Bleed Resistor | 2 x 0.3 | 100 | 2.2 | 1 |
| 1 | Medical Version (M5) | 2 x 10 | 100 | - | 1 |
| 2 | Medical Version (M5) | 2 x 4 | 100 | - | 1 |
| 4 | Medical Version (M5) | 2 x 1.5 | 100 | - | 1 |
| 6 | Medical Version (M5) | 2 x 0.8 | 100 | - | 1 |
| 8 | Medical Version (M5) | 2 x 0.6 | 100 | - | 1 |
| 10 | Medical Version (M5) | 2 x 0.3 | 100 | - | 1 |

Diagrams

Standard version with bleed resistor and Medical version M80
1-/2-pole

Medical version M5
1-/2-pole

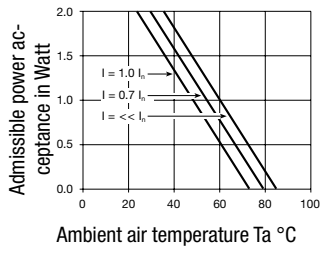


1) Line
2) Load

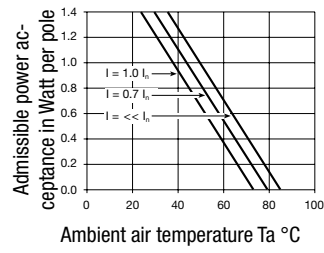
1) Line
2) Load

Derating Curves

1-pole



2-pole

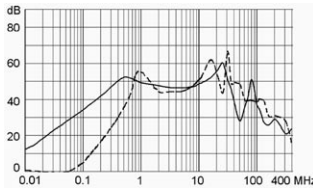


Attenuation Loss

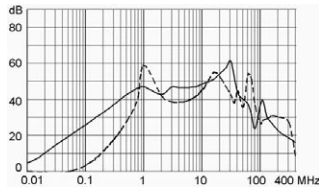
Standard version

--- differential mode ____ common mode

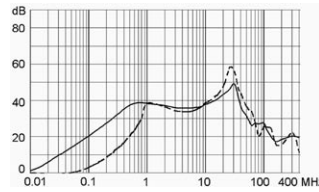
1 A



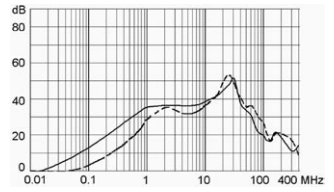
2 A



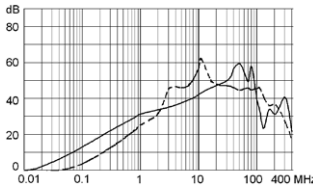
4 A



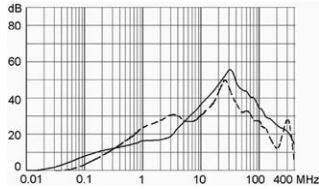
6 A



8 A

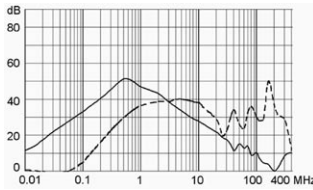


10 A

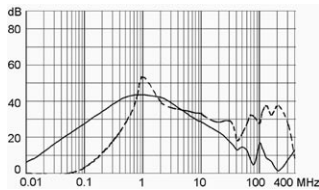


Medical version (M5)

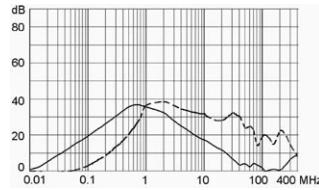
1 A



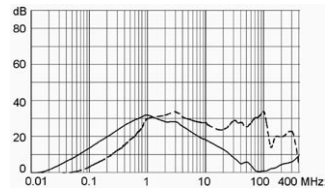
2 A



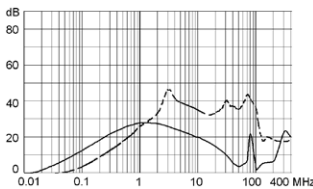
4 A



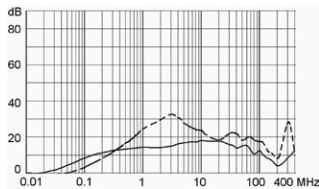
6 A



8 A



10 A



Variants

| Rated Current [A] | Filter-Type | Fuseholder | Comment | Order Number |
|-------------------|--------------------------------------|------------|---------|--------------|
| 1 | Standard Version with Bleed Resistor | 1-pole | - | DA22.1111.11 |
| 2 | Standard Version with Bleed Resistor | 1-pole | - | DA22.2111.11 |
| 4 | Standard Version with Bleed Resistor | 1-pole | - | DA22.4111.11 |
| 6 | Standard Version with Bleed Resistor | 1-pole | - | DA22.6111.11 |
| 8 | Standard Version with Bleed Resistor | 1-pole | - | DA22.8111.11 |
| 10 | Standard Version with Bleed Resistor | 1-pole | 1) | DA22.9111.11 |
| 1 | Standard Version with Bleed Resistor | 2-pole | - | DA22.1121.11 |
| 2 | Standard Version with Bleed Resistor | 2-pole | - | DA22.2121.11 |
| 4 | Standard Version with Bleed Resistor | 2-pole | - | DA22.4121.11 |
| 6 | Standard Version with Bleed Resistor | 2-pole | - | DA22.6121.11 |
| 8 | Standard Version with Bleed Resistor | 2-pole | - | DA22.8121.11 |
| 10 | Standard Version with Bleed Resistor | 2-pole | 1) | DA22.9121.11 |
| 1 | Medical Version (M5) | 2-pole | - | DA22.1321.11 |
| 2 | Medical Version (M5) | 2-pole | - | DA22.2321.11 |
| 4 | Medical Version (M5) | 2-pole | - | DA22.4321.11 |
| 6 | Medical Version (M5) | 2-pole | - | DA22.6321.11 |
| 8 | Medical Version (M5) | 2-pole | - | DA22.8321.11 |
| 10 | Medical Version (M5) | 2-pole | 1) | DA22.9321.11 |

1) UL approvals: versions with 1-pole fuseholder are approved up to 10 A, 2-pole versions up to 8 A.

Packaging unit 20 Pcs

Required Accessory

Description

Fusedrawer 2

Fusedrawer with and without Voltage Selector Insert



| | |
|--------------------|-----------|
| Fingergrip, 2-pole | 4301.1401 |
| Extra-Safe, 2-pole | 4301.1403 |
| Fingergrip, 1-pole | 4301.1405 |
| Extra-Safe, 1-pole | 4301.1407 |

...

Accessories



Cord retaining kits

Cord retaining strain relief

| | |
|--------------|-----------|
| Flat head, H | 4700.0008 |
|--------------|-----------|

Mating Outlets/Connectors

Category / Description

Appliance Outlet Overview complete



| | |
|---|------|
| IEC Appliance Outlet F, Screw-on Mounting, Front Side, Solder or Quick-connect Terminal | 4787 |
| IEC Appliance Outlet F, Snap-in Mounting, Front Side, Solder or Quick-connect Terminal | 4788 |
| IEC Appliance Outlet F or H, Screw-on Mounting, Front Side, Solder, PCB or Quick-connect Terminal | 5091 |
| IEC Appliance Outlet F or H, Screw-on Mounting, Front Side, Solder or Quick-connect Terminal | 5092 |

[Appliance Outlet further types to DA22](#)



[Connector Overview complete](#)

| | |
|---|--------|
| IEC Connector C15, Rewireable, Straight | 0101 |
| IEC Connector C15A, Rewireable, Straight | 0102 |
| IEC Connector C15A, Rewireable, Straight | 0102-G |
| IEC Connector C15A, Rewireable, Angled | 0112 |
| IEC Connector C13, Rewireable, Angled | 4012 |
| Connector further types to DA22 | ... |

[Power Cord Overview complete](#)



| | |
|--|------|
| Power Cord with IEC Connector C13, Angled | 0311 |
| Power Cord with IEC Connector C13, Angled | 3011 |
| Power Cord with IEC Connector C13, Angled | 3012 |
| Power Cord with IEC Connector C13, Angled | 3013 |
| Power Cord with IEC Connector C13 | 3020 |
| Power Cord further types to DA22 | ... |