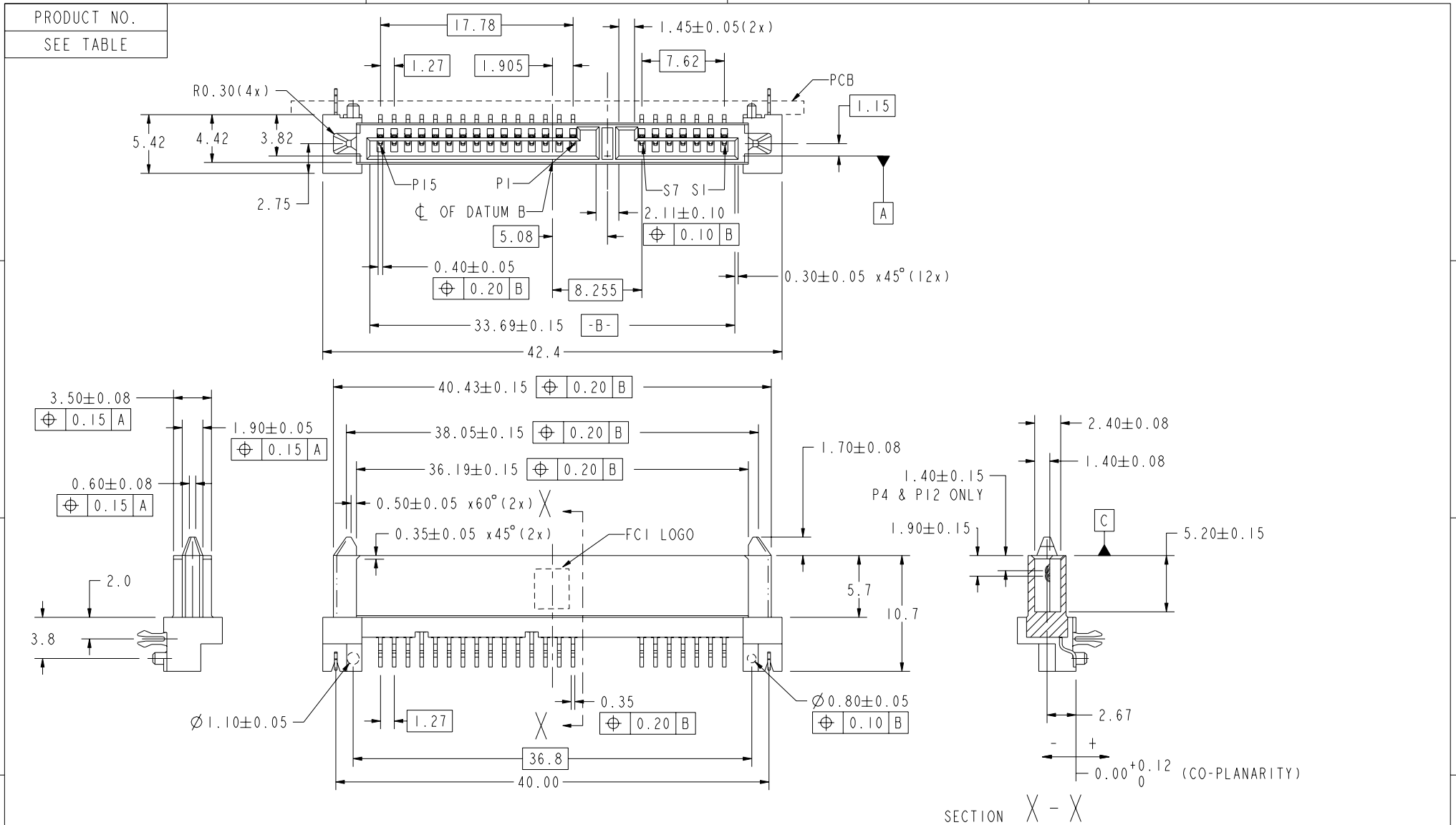




Copyright FCI.



PRODUCT NO.  
SEE TABLE

rev	ecn no	dr	date
H	S08-0168	BLLIM	2008-05-30
J	S08-0271	BLLIM	2008-08-19
K	S09-0173	BLLIM	2009-05-26
L	S09-0210	BLLIM	2009-06-25
M	S09-0293	BLLIM	2009-09-15
G	S08-0086	BLLIM	2008-03-25

www.fci.com			surface <input checked="" type="checkbox"/>	tolerance std ASME Y14.5	projection 	MM 
TOLERANCES UNLESS OTHERWISE SPECIFIED			ANGULAR	LINEAR	size A4	Scale 2:1
Dr	JPEH	2003-12-19	0.X	±----	ECN S09-0293	
Eng	BL LIM	2009-09-15	0.XX	±0.20	Spec ref	
Chr	BL LIM	2009-09-15	2°	±°	Product family	
Appr	JOEY NG	2009-09-15	Product family			Spec ref
FCI			S-ATA COMB RECEPTCLE			Rev. M
R/A SMT TYPE ASSY			catalog no	CUSTOMER	sheet 1 of 3	

REV F - 2009-04-17

PRODUCT NO.	RECOMMENDED P.C.B. THICKNESS	HOLD DOWN	DIM 'A'	HOUSING WITH STAND-OFF RIBS	PACKAGING
10029364-001LF	1.60	METAL CLIP	2.40	NO	TRAY
10029364-001TRLF					TAPE & REEL
10029364-002LF	1.00	METAL CLIP	1.80	NO	TRAY
10029364-002TRLF					TAPE & REEL
10029364-011LF	-	BLADE	2.60	NO	TRAY
10029364-011TRLF					TAPE & REEL
10029364-111LF	-	BLADE	2.60	YES	TRAY
10029364-111TRLF					TAPE & REEL

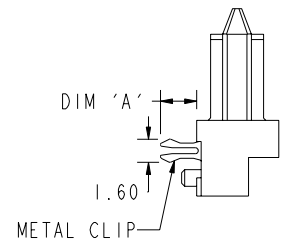
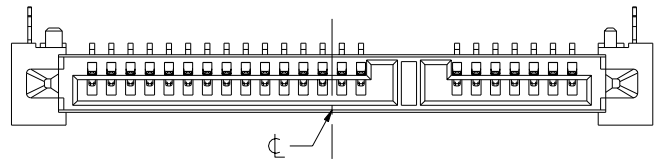
A

A

B

B

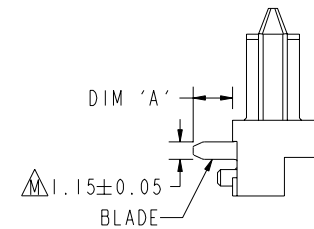
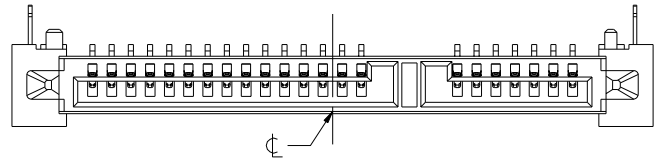
10029364-00XLF/TRLF



C

C

10029364-01XLF/TRLF

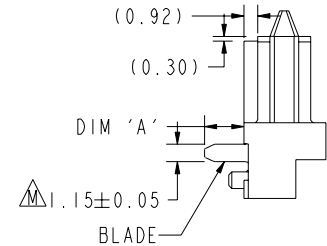
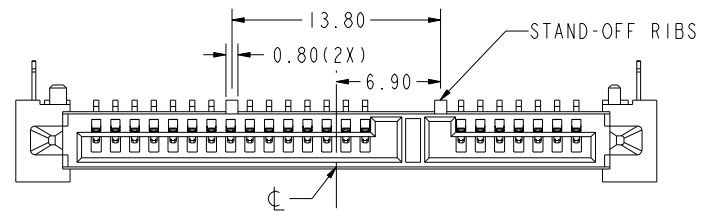


Copyright FCI.

D

D

10029364-11XLF/TRLF



S-ATA COMB RECEPTCLE  
R/A SMT TYPE ASSY  
catalog no

dwg no 10029364

Rev. M

CUSTOMER sheet 2 of 3

1 2 3 4

A B C D

A B C D

RECOMMENDED P.C.B. LAYOUT  
TOLERANCE UNLESS OTHERWISE ±0.10

ALTERNATIVE P.C.B. LAYOUT  
REFER TO RECOMMENDED PCB LAYOUT FOR UNSPECIFIED DIMENSIONS  
TOLERANCE UNLESS OTHERWISE ±0.10

NOTES:-

1. MATERIAL:
  - 1) HOUSING : HIGH TEMP. THERMOPLASTIC, UL 94V-0  
COLOR : BLACK
  - 2) TERMINAL : COPPER ALLOY
  - 3) HOLD DOWN : COPPER ALLOY
2. FINISH:
  - 1) TERMINAL : 30u" GOLD PLATING (CONTACT POINT)  
OVER 50u" MIN NICKEL
  - 2) SOLDER TAIL : 100u" MIN TIN OVER 50u" NICKEL
  - 3) HOLD DOWN : 100u" MIN TIN OVER 50u" NICKEL
3. TRUE POSITION APPLY AT TERMINAL TIP
4. THE STANDARD PACKAGING IS IN TRAY.
5. THE HOUSING WILL WITHSTAND EXPOSURE TO 260°C PEAK TEMPERATURE FOR 10 SECONDS IN A CONVECTION, INFRA-RED OR VAPOR PHASE REFLOW OVEN
6. THIS PRODUCT MEETS EUROPEAN UNION DIRECTIVES AND OTHER COUNTRY REGULATIONS AS DESCRIBED IN GS-22-008
7. PART NUMBERS ENDING IN "LF" ARE MEANT FOR LEAD-FREE IDENTIFICATION. P/N XXXXXXXXX-XXXLF IS EQUIVALENT TO PREVIOUS P/N XXXXXXXXX-XXX
8. A  $\Delta$  SYMBOL WILL BE NEXT TO ANY DIMENSION, VIEW, OR NOTE WHICH HAS BEEN MODIFIED WITH THE CURRENT DRAWING REVISION.

	title S-ATA COMB RECEPTCLE R/A SMT TYPE ASSY	dwg no 10029364	Rev. M
	catalog no	CUSTOMER	sheet 3 of 3

REV F - 2006-04-17

2 **PDM: Rev:M** STATUS **Released** 4 Printed: Oct 07, 2009

Copyright FCI.