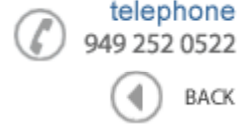




**Data Sheet**



Product Category: RF SAW Filter

Part Number	Package	Application	Last Modified
861-RF1842.5M-C	2.5 x 2.0 SMD	PCN	Mar. 2, 2007

TYPE :  
PCN, Balanced RF SAW Filter

PART NUMBER :  
**861-RF1842.5M-C**

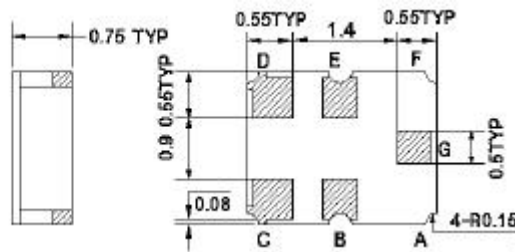
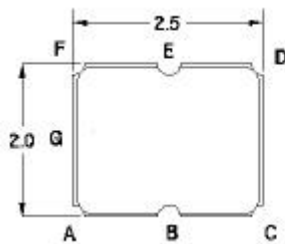


**OPERATING CONDITIONS / ELECTRICAL CHARACTERISTICS**

PARAMETERS	Condition	Minimum	Typical	Maximum	Units
Center Frequency (Fo)	-	-	1842.5	-	MHz
Maximum Insertion Loss	1805.0~ 1880.0 MHz	-	2.8	4.0	dB
Attenuation:	D.C.~ 1200.0 MHz	40	48	-	dB
	1200.0~1705.0 MHz	30	33	-	
	1705.0~ 1785.0MHz	9	14.5	-	
	1920.0~ 1980.0 MHz	10	22.5	-	
	1980.0~ 2000.0 MHz	20	23.5	-	
	2200.0~ 3000.0 MHz	30	36	-	
3000.0~ 6000.0 MHz	40	44	-	-	
Symmetry in Band	1805.0~ 1880.0 MHz	-			
Output Amplitude Balance (I S31/S21 I)	-	-1.8	0	1.4	dB
Output Phase Balance ( $\phi(S31)-\phi(S21)+180^\circ$ )	-	-12	0	12	degree
Source Impedance (single ended)*	-	-	50	-	ohm
Load Impedance (Balanced ended)*	-	-	200//18nH	-	ohm
Input/Output VSWR	1805.0~ 1880.0 MHz	-	2.0	2.5	-
Amplitude Ripple	1805.0~ 1880.0 MHz	-	0.7	1.5	dBp-p
Maximum DC Voltage	-	-	-	5	V
Maximum Input Power	-	-	-	12	dBm
Operating Temperature	-	-20	-	+75	°C

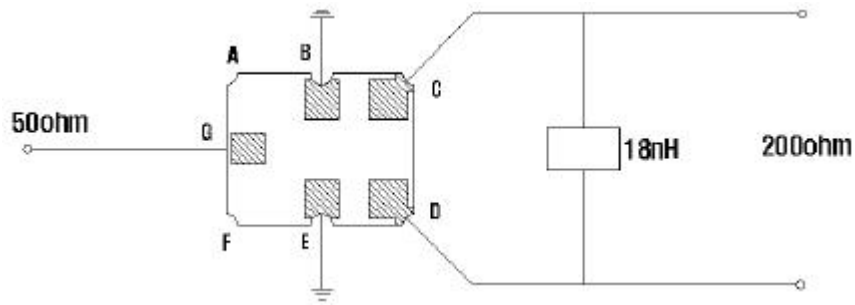
\*With Matching Network

**PACKAGE OUTLINE (mm)**

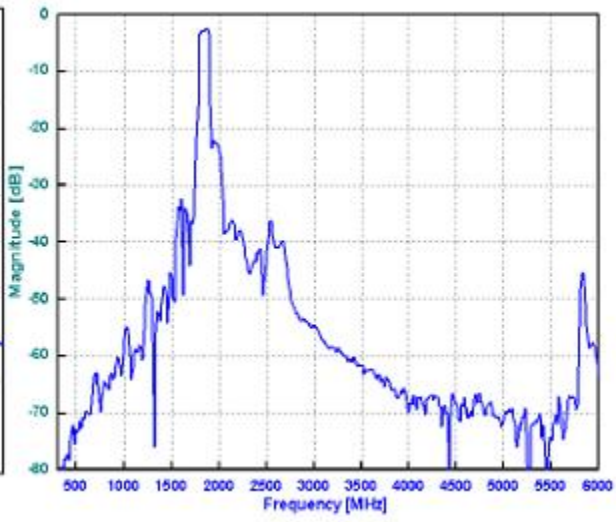
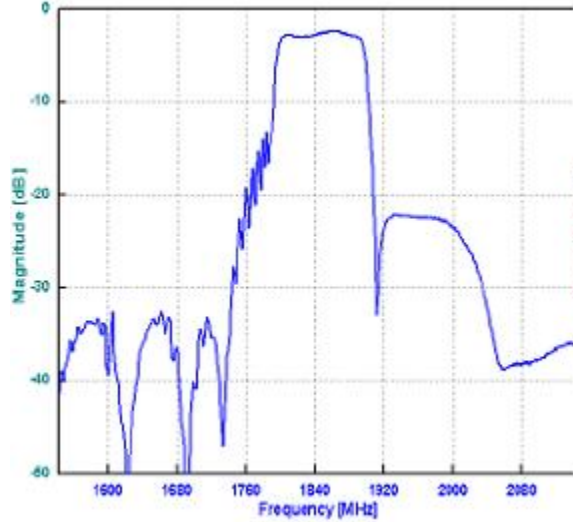


PIN LAYOUT	
A	-
B	Ground
C	Out
D	Out
E	Ground
F	-
G	In

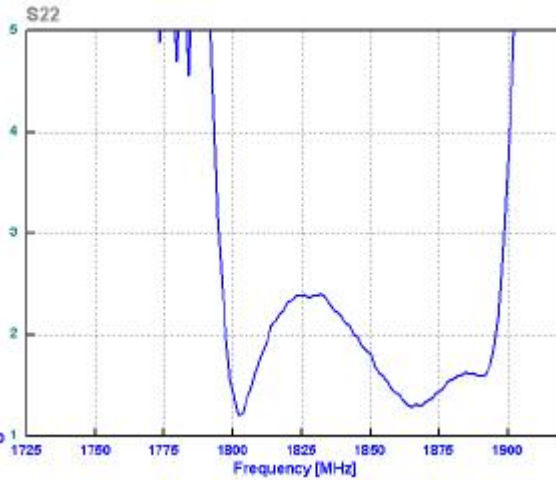
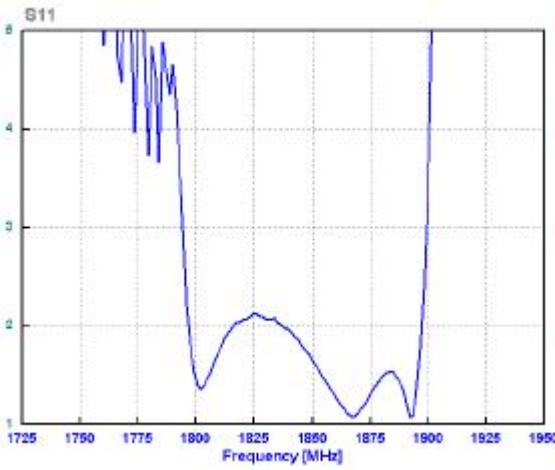
**TEST FIXTURE**



## FREQUENCY RESPONSE

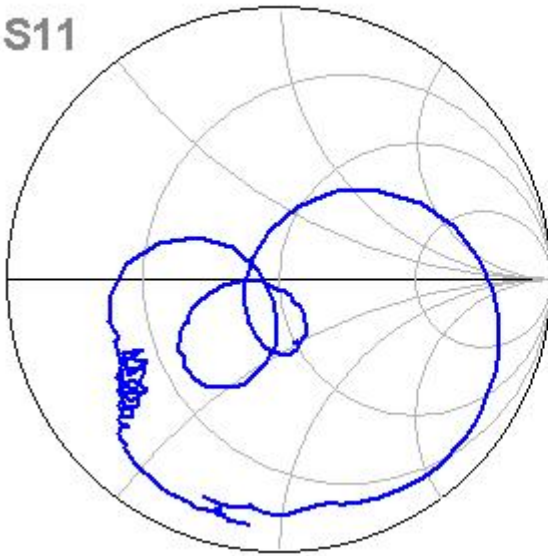


## VSWR

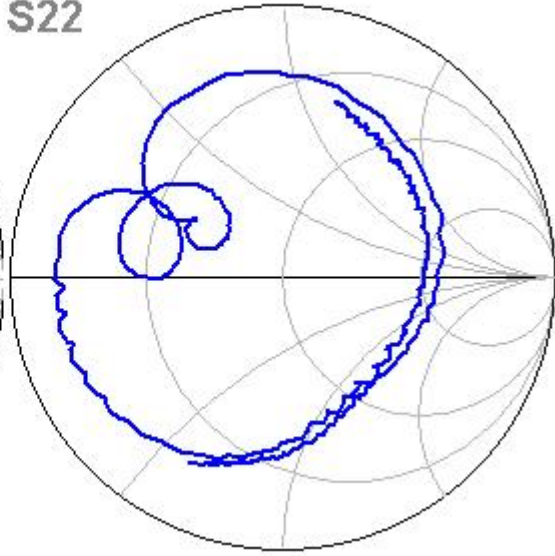


## SMITH CHART

S11



S22



**Oscilent Corporation** - CALL **949.252.0522**

18195 East McDermott Street . Building D . Irvine . CA 92614 . USA  
Fax: 949.252.0599 . E-Mail: [Sales@Oscilent.com](mailto:Sales@Oscilent.com)

**Part No.:** 861-RF1842.5M-C