

**Data Sheet**

telephone
949 252 0522



BACK

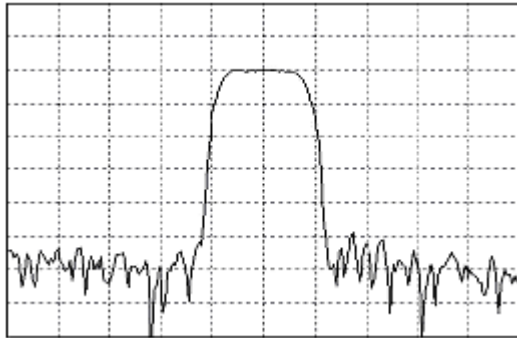
Product Category: IF SAW Filter

Part Number	Package	Application	Last Modified
819-IF160.0M-F	19 x 6.5 SMD	Base Station, Repeater, HDR, IMT-2000	May 30 2003

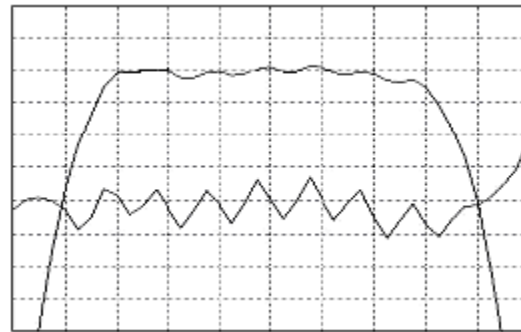
TYPE :

160.0 MHz Bandpass Filter

1.26 MHz Bandwidth

**PART NUMBER :****819-IF160.0M-F**

Horizontal : 1.0 MHz/Div
Vertical : 10 dB/Div



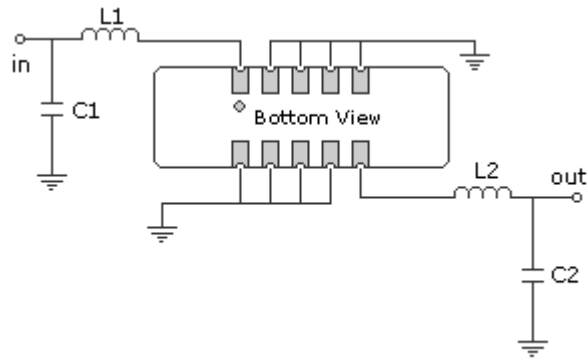
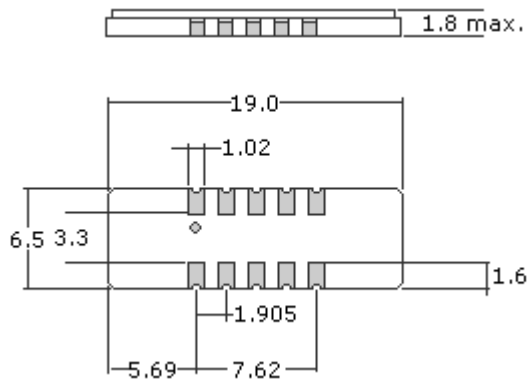
Horizontal : 0.2 MHz/Div
Vertical : 1 dB/Div
Vertical : 100 ns/Div

OPERATING CONDITIONS / ELECTRICAL CHARACTERISTICS

PARAMETERS	Minimum	Typical	Maximum	Units
Center Frequency	159.95	160.0	160.05	MHz
Insertion Loss	-	17.0	21.0	dB
1.5dB Bandwidth	1.26	1.37	-	MHz
35dB Bandwidth	-	2.25	2.40	MHz
40dB Bandwidth	-	2.38	2.50	MHz
Passband Ripple	-	0.53	0.75	dB
Group Delay Variation	-	180	220	nsec
Absolute Delay	-	2.5	-	µsec
Ultimate Rejection	50	55	-	dB
Substrate Material	-	Quartz	-	-
Ambient Temperature	-	25	-	°C
Phase Linearity	-	2.7	3.0	deg

* Custom SAW IF Filters available. Contact Oscilent for assistance.

PACKAGE OUTLINE (mm)**TEST FIXTURE**



L1 = 68nH L2 = 47nH
 C1 = 39pF C2 = 27pF
 Source/Load Impedance = 50 ohms

Oscilent Corporation - CALL **949.252.0522**
 17962 Sky Park Circle, Building D, Irvine, CA 92614, USA
 Fax: 949.252.0599, E-Mail: Sales@Oscilent.com

Part No.: 819-IF160.0M-F

Crystal Oscillators | Quartz Crystal | TCXO | VCXO | IF SAW Filter | RF SAW Filter | Ceramic Resonator
 Crystal Filter | Ceramic Filter | SAW Filter / SAW Devices | Site Map