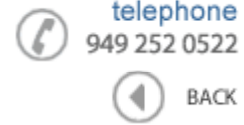




Data Sheet



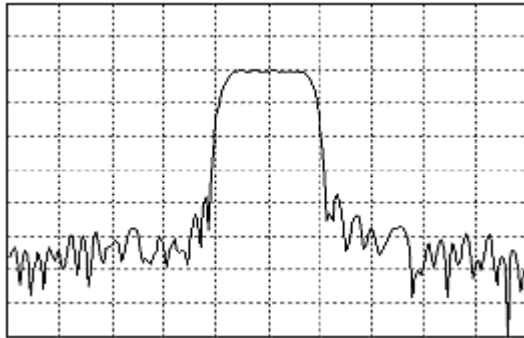
Product Category: IF SAW Filter

Part Number 819-IF160.0M-E	Package 19 x 6.5 SMD	Application Base Station, Repeater, HDR, IMT-2000	Last Modified May 30 2003
-------------------------------	-------------------------	--	------------------------------

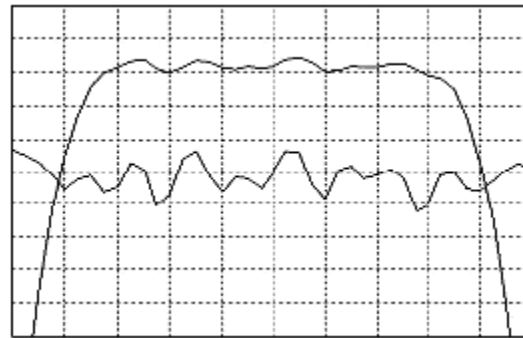
TYPE :
160.0 MHz Bandpass Filter
1.30 MHz Bandwidth



PART NUMBER :
819-IF160.0M-E



Horizontal : 1.0 MHz/Div
Vertical : 10 dB/Div



Horizontal : 0.2 MHz/Div
Vertical : 1 dB/Div
Vertical : 100 ns/Div

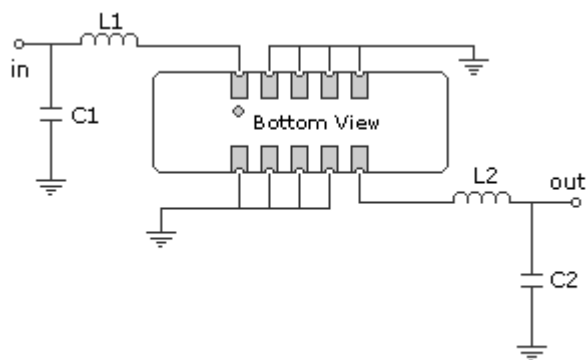
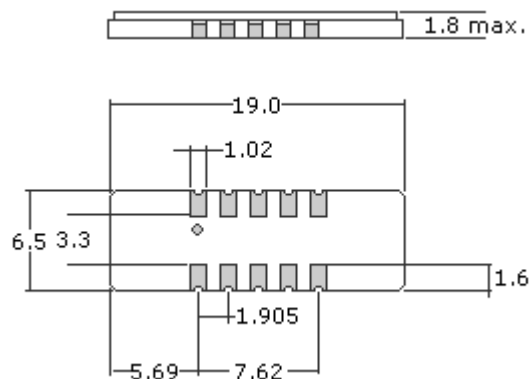
OPERATING CONDITIONS / ELECTRICAL CHARACTERISTICS

PARAMETERS	Minimum	Typical	Maximum	Units
Center Frequency	159.95	160.0	160.05	MHz
Insertion Loss	-	18.0	21.0	dB
0.5dB Bandwidth	1.18	1.35	-	MHz
3dB Bandwidth	1.30	1.60	-	MHz
30dB Bandwidth	-	2.2	3.0	MHz
Passband Ripple	-	0.49	0.8	dB
Group Delay Variation	-	170	200	nsec
Absolute Delay	-	2.5	-	µsec
Ultimate Rejection	35	50	-	dB
Substrate Material	-	Quartz	-	-
Ambient Temperature	-	25	-	°C
Phase Linearity	-	2.9	7.0	deg

* Custom SAW IF Filters available. Contact Oscilent for assistance.

PACKAGE OUTLINE (mm)

TEST FIXTURE



L1 = 80nH L2 = 56nH
 C1 = 36pF C2 = 39pF
 Source/Load Impedance = 50 ohms

Part No.: 819-IF160.0M-E

Oscilent Corporation - CALL **949.252.0522**
 17962 Sky Park Circle, Building D, Irvine, CA 92614, USA
 Fax: 949.252.0599, E-Mail: Sales@Oscilent.com

Crystal Oscillators | Quartz Crystal | TCXO | VCXO | IF SAW Filter | RF SAW Filter | Ceramic Resonator
 Crystal Filter | Ceramic Filter | SAW Filter / SAW Devices | Site Map