



TAI-SAW TECHNOLOGY CO., LTD.

No. 3, Industrial 2nd Rd., Ping-Chen Industrial District,
Taoyuan, 324, Taiwan, R.O.C.

TEL: 886-3-4690038 FAX: 886-3-4697532

E-mail: tstsales@mail.taisaw.com Web: www.taisaw.com

Approval Sheet For Product Specification

Issued Date:

Product Name: SAW Filter 869.6MHz SMD5X5mm

TST Parts No.: TA0275A

Customer Parts No.: _____

Company: _____
Division: _____
Approved by : _____
Date: _____

Checked by: Jacky Huang

Approval by: Francis Chen

Date: 2003/6/2



TAI-SAW TECHNOLOGY CO., LTD.

No. 3, Industrial 2nd Rd., Ping-Chen Industrial District,
Taoyuan, 324, Taiwan, R.O.C.

TEL: 886-3-4690038 FAX: 886-3-4697532

E-mail: tstsales@mail.taisaw.com Web: www.taisaw.com

SAW Filter 869.6 MHz

MODEL NO.: TA0275A

REV. NO.:1

A. MAXIMUM RATING:

1. Input Power Level: 0 dBm
2. DC voltage: 0 V
3. Operating Temperature: -45°C to +90°C
4. Storage Temperature: -45°C to +90°C

RoHS Compliant
Lead free
Lead-free soldering

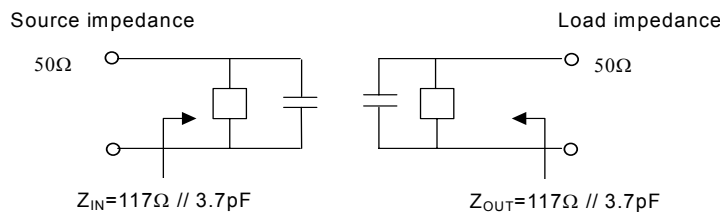
B. ELECTRICAL CHARACTERISTICS:

Reference temperature: -45°C to +90°C

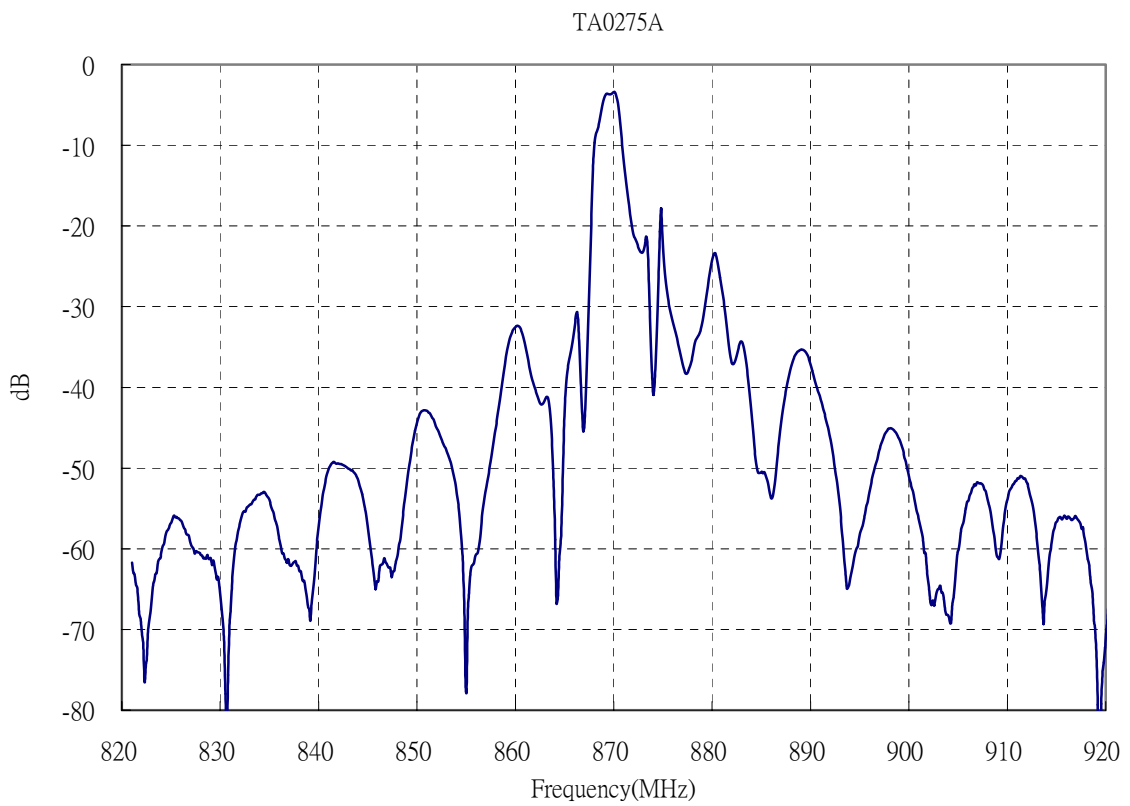
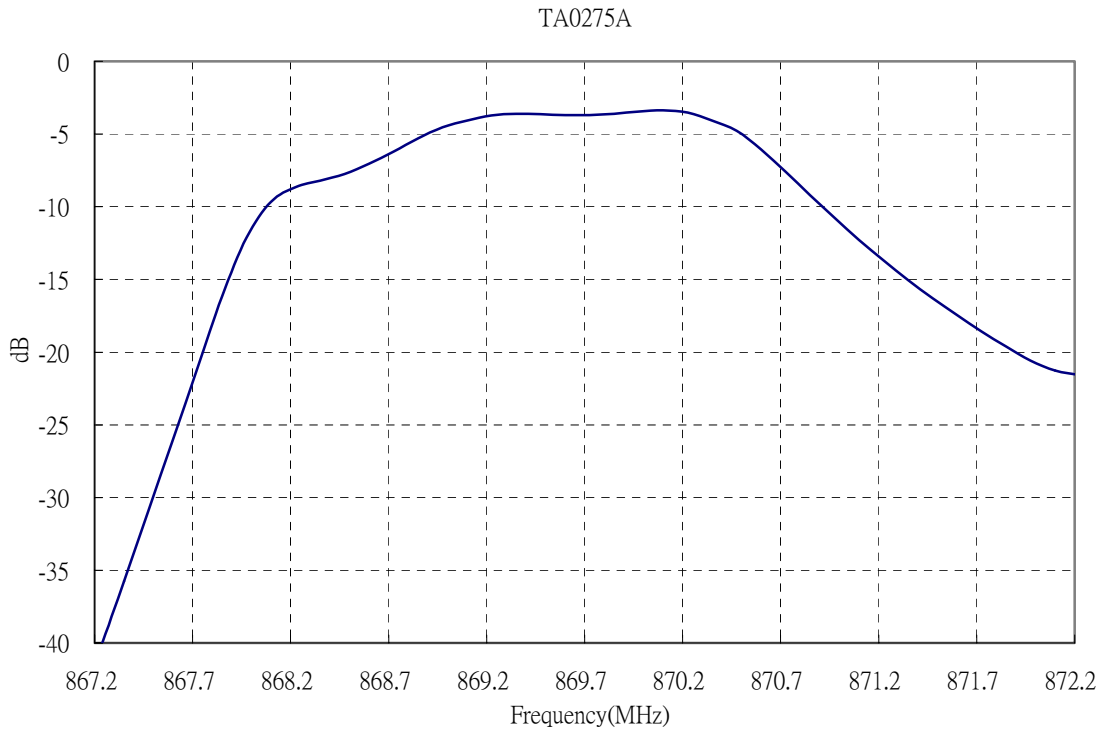
Item	Min.	Typ.	Max.	Note
Center frequency F_C (MHz)	-	869.6	-	1
Minimum I.L. (869.2~870.18 MHz) (dB) IL_{min}	-	3.0	4.7	
Pass band (relative to IL_{min})				
869.2~870.18 MHz (dB)	-	1.0	3.0	1
869.12~870.26 MHz (dB)	-	1.5	6.0	
Pass bandwidth (relative to IL_{min}) BW_3 (KHz)	-	1850	-	
Attenuation:(relative to IL_{min}) (dB)				
10~700 MHz (dB)	55	60	-	1
700~843 MHz (dB)	40	45	-	
843~865.2 MHz (dB)	28	31	-	
865.2~867 MHz (dB)	15	22	-	
871.69~872.5 MHz (dB)	10	15	-	
872.5~880 MHz (dB)	11	16	-	
880~910 MHz (dB)	15	20	-	
910~1000 MHz (dB)	45	50	-	
Impedance at F_C ; Input $Z_{IN}=R_{IN}/C_{IN}$ Output $Z_{OUT}=R_{OUT}/C_{OUT}$		117Ω // 3.7 pF 117Ω // 3.7 pF		2

Note1. The standard definitions is in JIS C 6703

Note2.

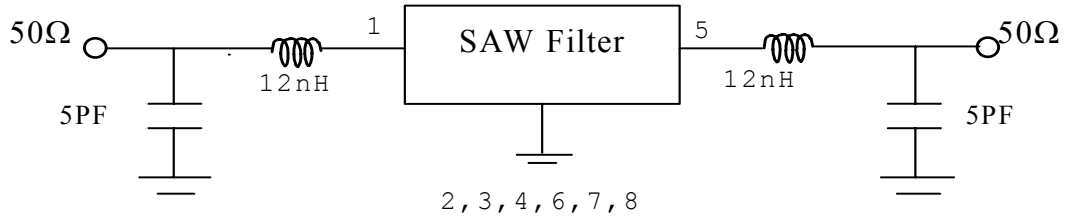


C.FREQUENCY CHARACTERISTICS:

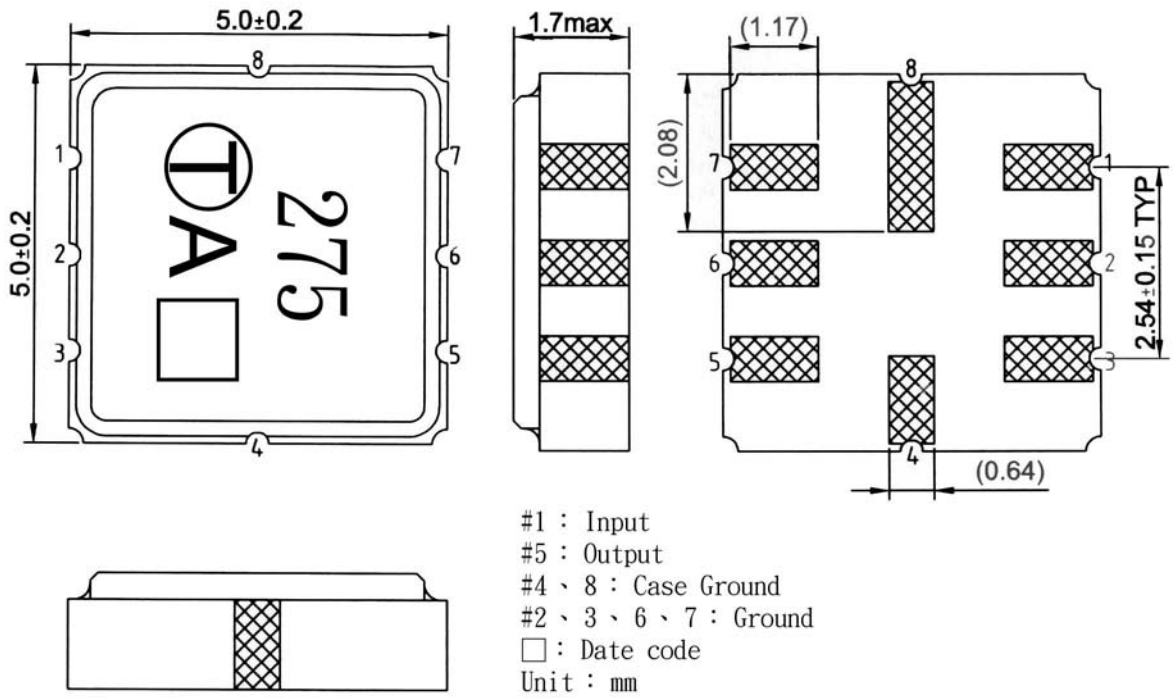


D. MEASUREMENT CIRCUIT:

HP Network analyzer

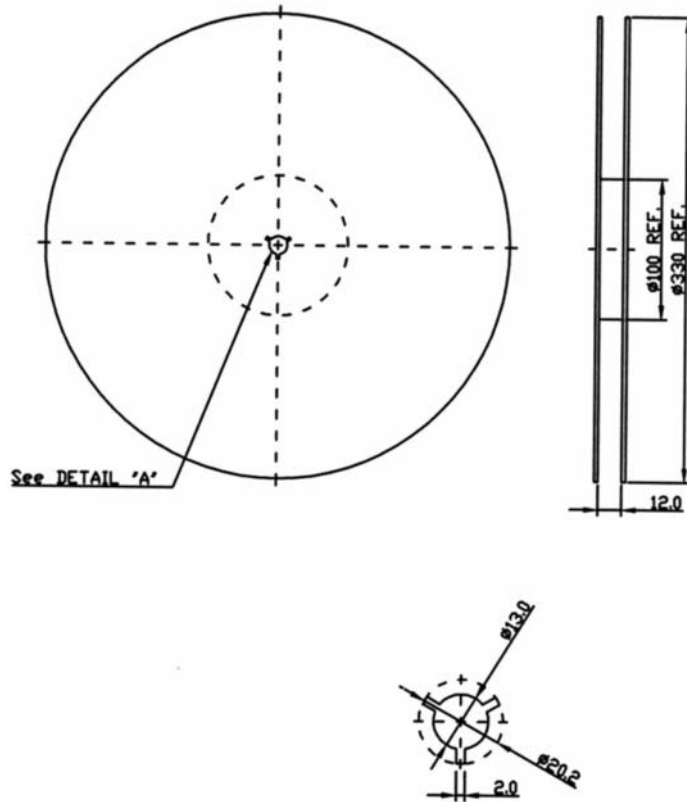


E. OUTLINE DRAWING:

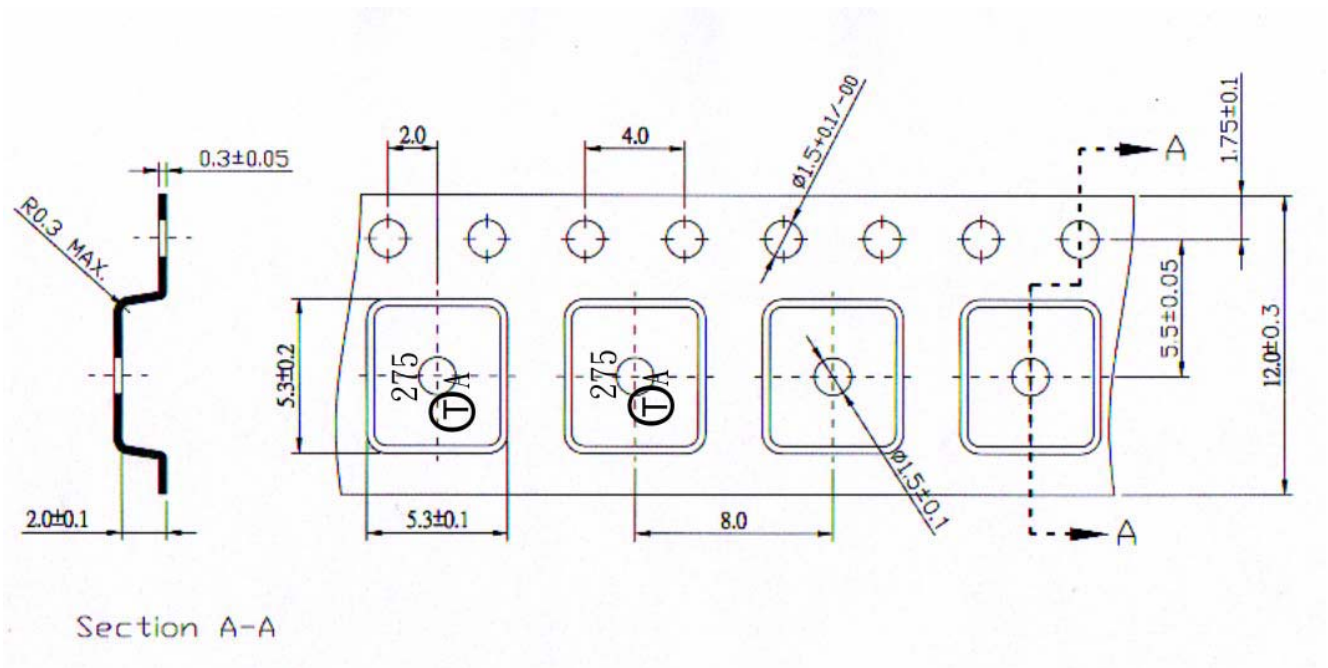


F. PACKING:

1. REEL DIMENSION



2. TAPE DIMENSION



Section A-A