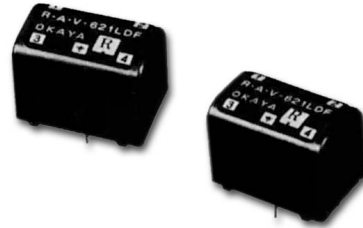




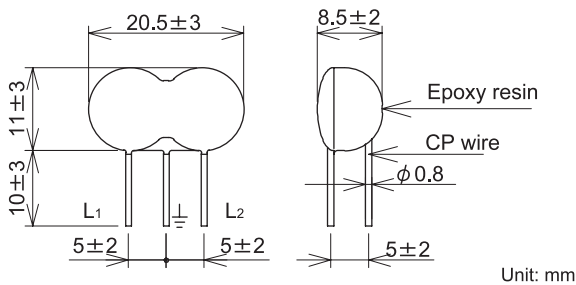
- R · A · V-LD (for protecting network line)
RAV-LD series are designed as surge absorbers for protection of telecommunication lines from indirect lightning surges. They demonstrate extremely fast response time and positive surge absorption operation compared to gas arresters. They contain two of RAV in one package with 3 leads.



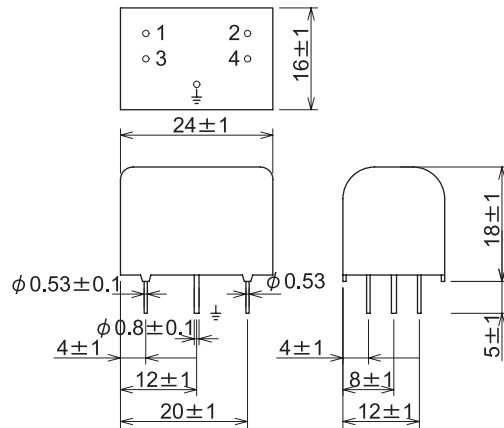
- R · A · V-LDF (for protecting network line)
RAV-LDF series are designed as surge absorbers for protection of telecommunication lines from indirect lightning surges. They have fail safe function. It prevents the accident by mis-conection of AC power line and telephone line.



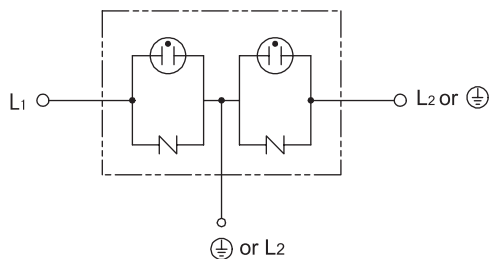
Dimensions



Dimensions

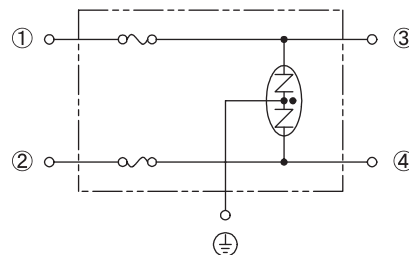


Circuit



Unit: mm

Circuit



Electrical Specifications

Model Number	*Clamp Voltage V _{1.0} ±10%	Peak Surge Current 8/20μs(A)	Peak Surge Voltage 1.2/50μs(A)	Response Time(ns)	Capacitance (PF) Max.	Operating Temp. range (°C)
R · A · V-221LD	220	2400	12k	50	90	-20 ~ +70
R · A · V-361LD	360				30	
R · A · V-401LD	400				40	
R · A · V-621LD	620				90	
R · A · V-221LDF	220	1000			40	
R · A · V-621LDF	620				40	

*Equivalent varistor voltage@1MA