



TAI-SAW TECHNOLOGY CO., LTD.

No. 3, Industrial 2nd Rd., Ping-Chen Industrial District,
Tao-Yuan, 324, Taiwan, R.O.C.

TEL: 886-3-4690038 FAX: 886-3-4697532

E-mail: tstsales@mail.taisaw.com Web: www.taisaw.com

Approval Sheet for Product Specification

Issued Date:

Product Name: 288MHz IF SAW Filter (BW=10 MHz)

TST Parts No.: TB0588A

Customer Parts No.: _____

Company: _____
Division: _____
Approved by : _____
Date: _____

Checked by: Andy Yu

Approval by: Francis Chen

Date: 02/01/2008



TAI-SAW TECHNOLOGY CO., LTD.

No. 3, Industrial 2nd Rd., Ping-Chen Industrial District,
Taoyuan, 324, Taiwan, R.O.C.

TEL: 886-3-4690038 FAX: 886-3-4697532

E-mail: tstsales@mail.taisaw.com Web: www.taisaw.com

IF SAW Filter 288MHz(BW=10MHz) SMD 5X5mm

MODEL NO.: TB0588A

Rev. NO. 1

A. MAXIMUM RATING:

1. Input Power Level: 10 dBm
2. Operating Temperature: -40 °C ~ 85°C
3. Storage Temperature: -40 °C ~ +85 °C

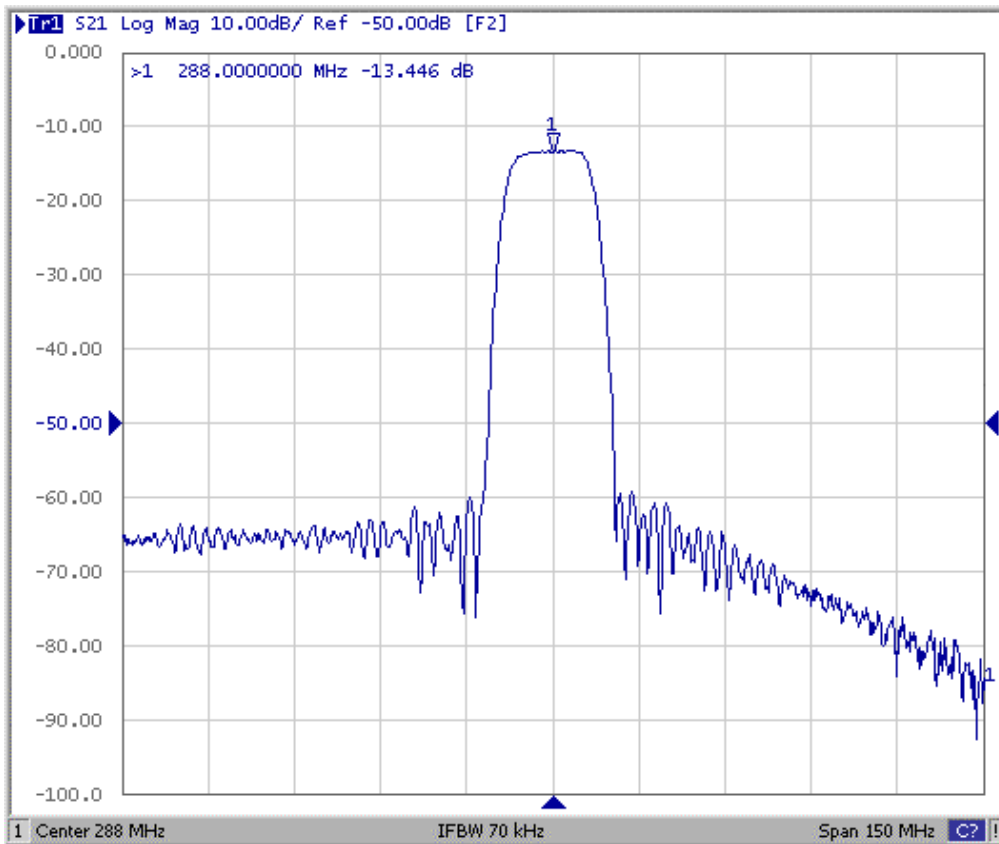
RoHS Compliant
 Lead free
 Lead-free soldering

B. Characteristics :

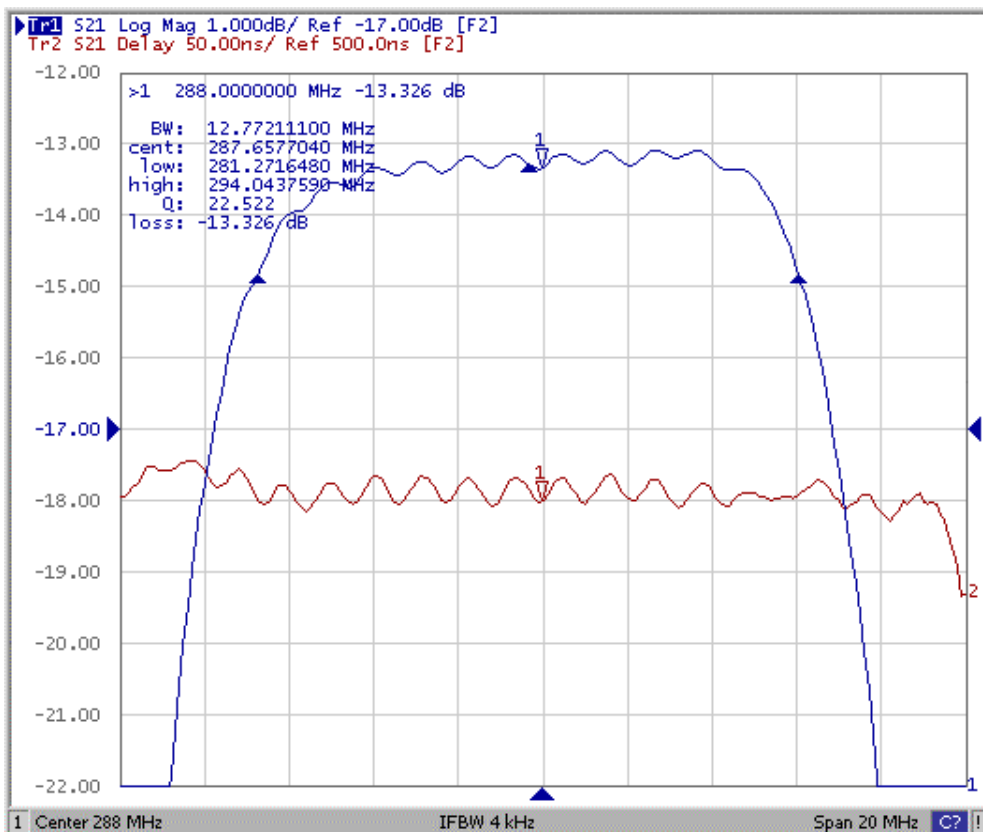
Characteristics	Value			note
	Min.	Typ.	Max.	
Center frequency F_c MHz	-	288	-	-
Minimum Insertion loss I.L. dB	-	13.2	15	-
1.5 dB Bandwidth MHz	11.1	12.8	-	-
Amplitude Ripple ($F_c \pm 5.0\text{MHz}$) dB	-	0.5	1.0	-
Group-delay Ripple ($F_c \pm 5.5\text{MHz}$) nsec	-	25	200	-
Average-delay ($F_c \pm 5.5\text{MHz}$) usec		0.45		
Input Output Return Loss at F_c dB		12		
Attenuation (Reference level from Minimum insertion loss)				
(1) $F_c \pm 8.60\text{MHz}$ dB	5	8	-	-
(2) $F_c \pm 14.3\text{MHz}$ dB	40	45	-	-
(2) $F_c \pm 18.6\text{MHz}$ dB	42	48	-	-
(2) $F_c \pm 37.1\text{MHz}$ dB	43	48	-	-

C. Frequency Characteristics :

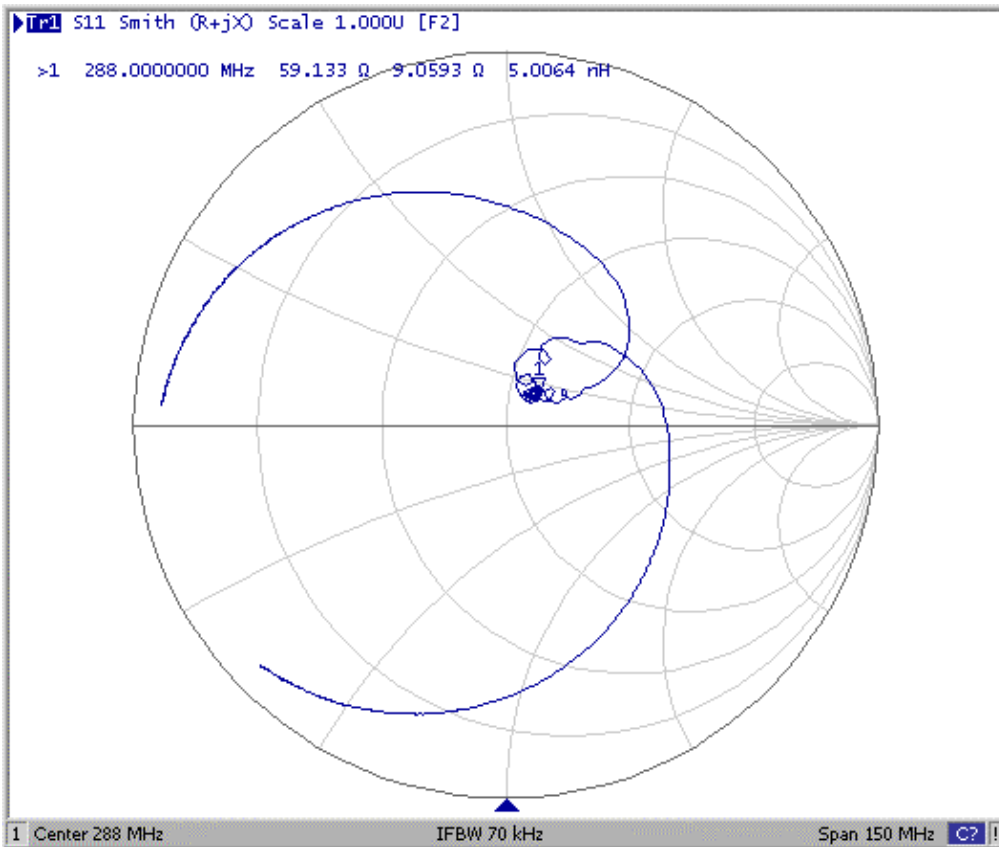
1. S21 Response:(span 150MHz)



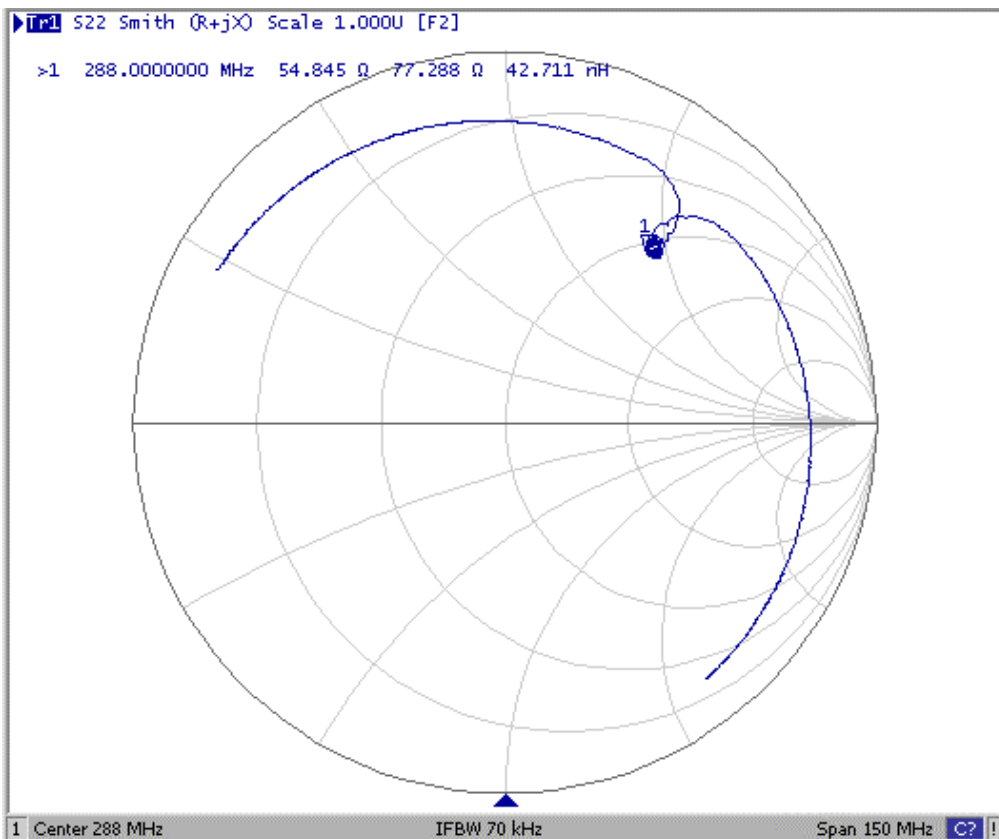
2. Passband Response: (span 20MHz)



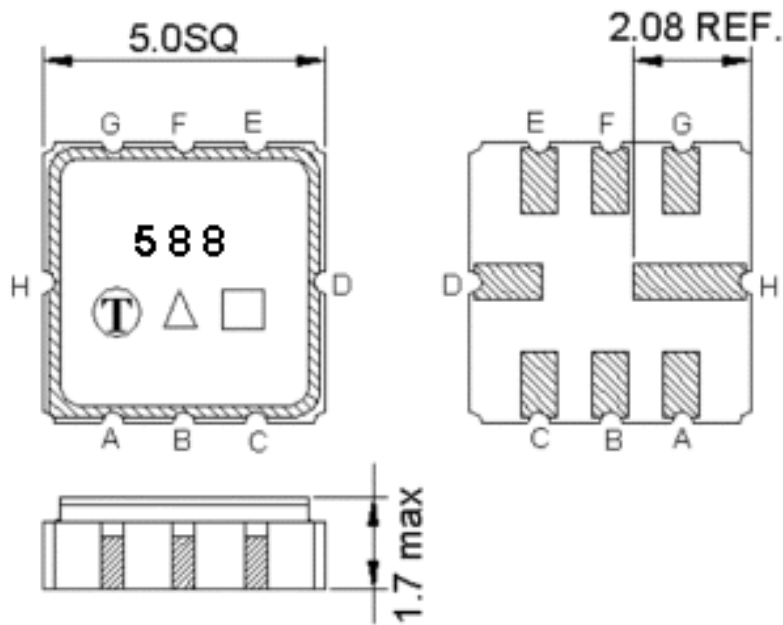
3. S11 Smith-Chart: (span 150MHz)



4. S22 Smith-Chart: (span 150MHz)



D. Outline Drawing:



Pin A: RF input

Pin E: RF output

Pin H,D: Case Ground

Pin B,C,G,F: Ground

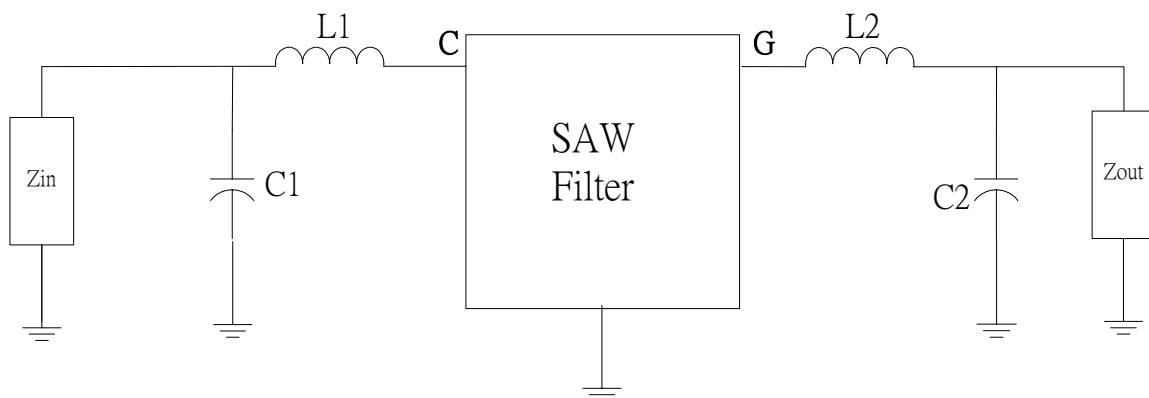
□ : Week Code (Follow the table from planner each year)

Unit : mm

△ : Product / Year Code

Year	2005 2009	2006 2010	2007 2011	2008 2012
Product Code	B	b	<u>B</u>	<u>b</u>

E. Matching Circuit:

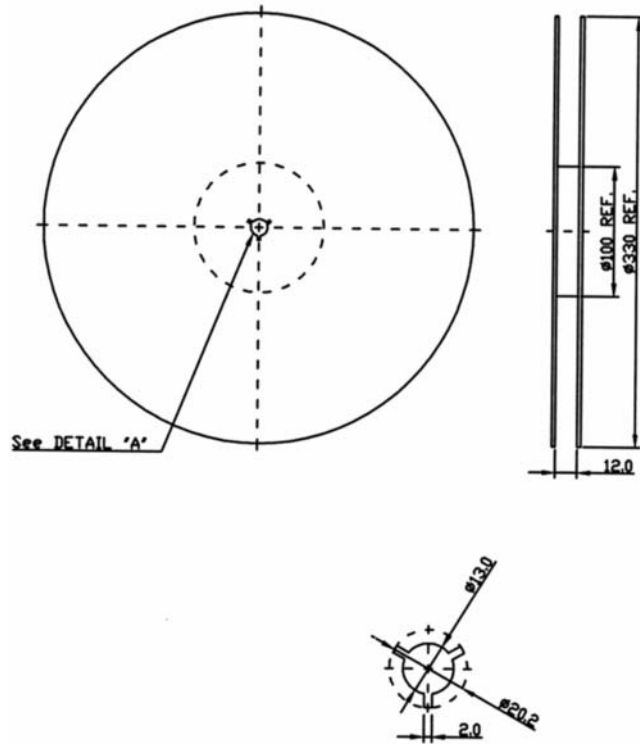


Z_{in} and Z_{out} are $50\ \Omega$

$L1=15\text{nH}$, $C1=24\text{pF}$, $L2=22\text{nH}$, $C2=10\text{pF}$

F.PACKING:

1.REEL DIMENSION



2.TAPE DIMENSION

