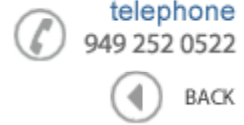




Data Sheet



Product Category: RF SAW Filter

Part Number	Package	Application	Last Modified
805-RF315.0M-A	5.0 x 5.0 SMD	Remote Control	Mar. 10, 2007

TYPE :
RF SAW Filter for Remote Control



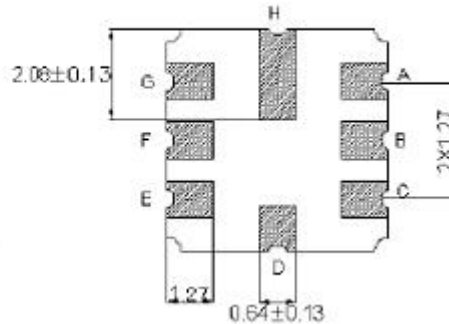
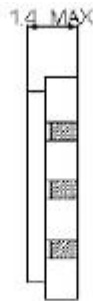
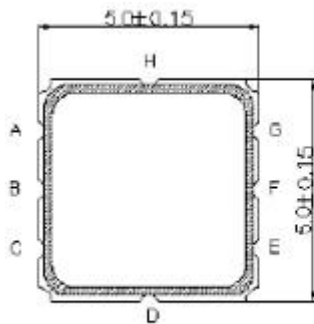
PART NUMBER :
805-RF315.0M-A

OPERATING CONDITIONS / ELECTRICAL CHARACTERISTICS

PARAMETERS	Condition	Minimum	Typical	Maximum	Units
Center Frequency (Fo)	-	-	315.0	-	MHz
Insertion Loss	314.82 ~ 315.22 MHz I _{Lmin}	-	2.0	4.0	dB
Stop Band Attenuation:	10.0 ~270.0 MHz	45	55	-	dB
	270.0 ~309.0 MHz	30	35	-	
	309.0 ~313.94 MHz	15	20	-	
	316.0 ~335.0 MHz	10	15	-	
	335.0 ~400.0 MHz	35	45	-	
	400.0 ~1000.0 MHz	45	55	-	
Ripple in	322.0 ~ 328.6 MHz-	-	0.8	1.5	MHz
Source Impedance (single ended)*	-	-	50	-	ohm
Load Impedance (single ended)*	-	-	50	-	ohm
DC Voltage	-	-	-	10	V
Passband (relative to I _{Lmin})	-				
	314.77 ~315.2 MHz	-	1.5	3.0	dB
	314.71 ~315.26 MHz	-	2.0	6.0	dB
3dB Passband Width (relative to I _{Lmin})	-	0.8	0.92	-	MHz
Operating Temperature	-	-40	-	+105	°C

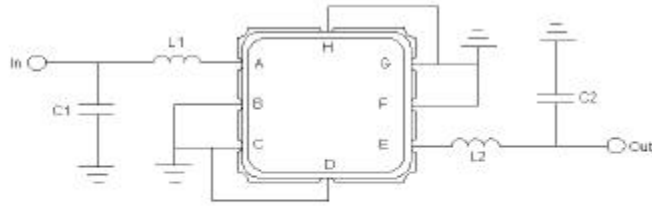
* With Matching Network

PACKAGE OUTLINE (mm)



PIN LAYOUT	
A	In
B	Ground
C	Ground
D	Ground
E	Out
F	Ground
G	Ground
H	Ground

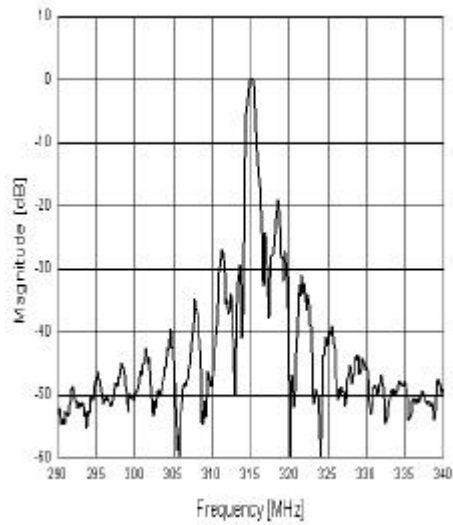
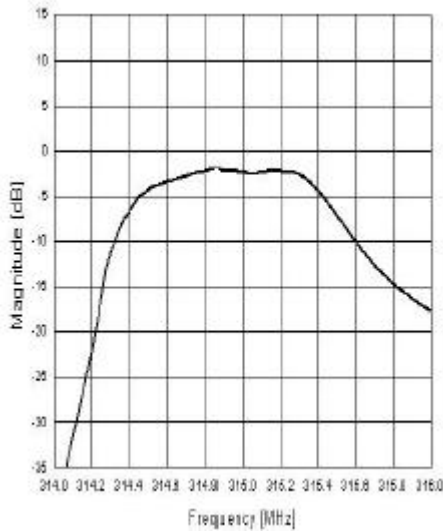
TEST FIXTURE



L1 : 57 nH L2 : 57 nH C1 : 10 pF C2 : 10 pF

Source & Load Impedance: 50 Ω

FREQUENCY RESPONSE



Oscilent Corporation - CALL **949.252.0522**

Part No.: 805-RF315.0M-A

18195 East McDermott Street, Building D, Irvine, CA 92614, USA
 Fax: 949.252.0599, E-Mail: Sales@Oscilent.com