



TAI-SAW TECHNOLOGY CO., LTD.

No. 3, Industrial 2nd Rd., Ping-Chen Industrial District,
Taoyuan, 324, Taiwan, R.O.C.

TEL: 886-3-4690038 FAX: 886-3-4697532

E-mail: tstsales@mail.taisaw.com Web: www.taisaw.com

Approval Sheet For Product Specification

Issued Date:

Product Name: SAW Filter 915MHz SMD 3.0x3.0 mm

TST Parts No.:TA0495A

Customer Parts No.:_____

Company: _____
Division: _____
Approved by : _____
Date: _____

Checked by: _____ Elvis Chiu

Approval by: _____ Francis Chen

Date: _____ 2005/07/01



TAI-SAW TECHNOLOGY CO., LTD.

No. 3, Industrial 2nd Rd., Ping-Chen Industrial District,
Taoyuan, 324, Taiwan, R.O.C.

TEL: 886-3-4690038 FAX: 886-3-4697532

E-mail: tstsales@mail.taisaw.com Web: www.taisaw.com

SAW Filter 915 MHz

MODEL NO.: TA0495A

REV. No.: 1

A. MAXIMUM RATING:

1. Input Power Level: 15 dB_m
2. DC voltage: 3 V
3. Operating Temperature: -30°C ~ +85°C
4. Storage Temperature: -40°C ~ +85°C

RoHS Compliant
Lead free
Lead-free soldering

B. ELECTRICAL CHARACTERISTICS:

Singled to Balanced operation

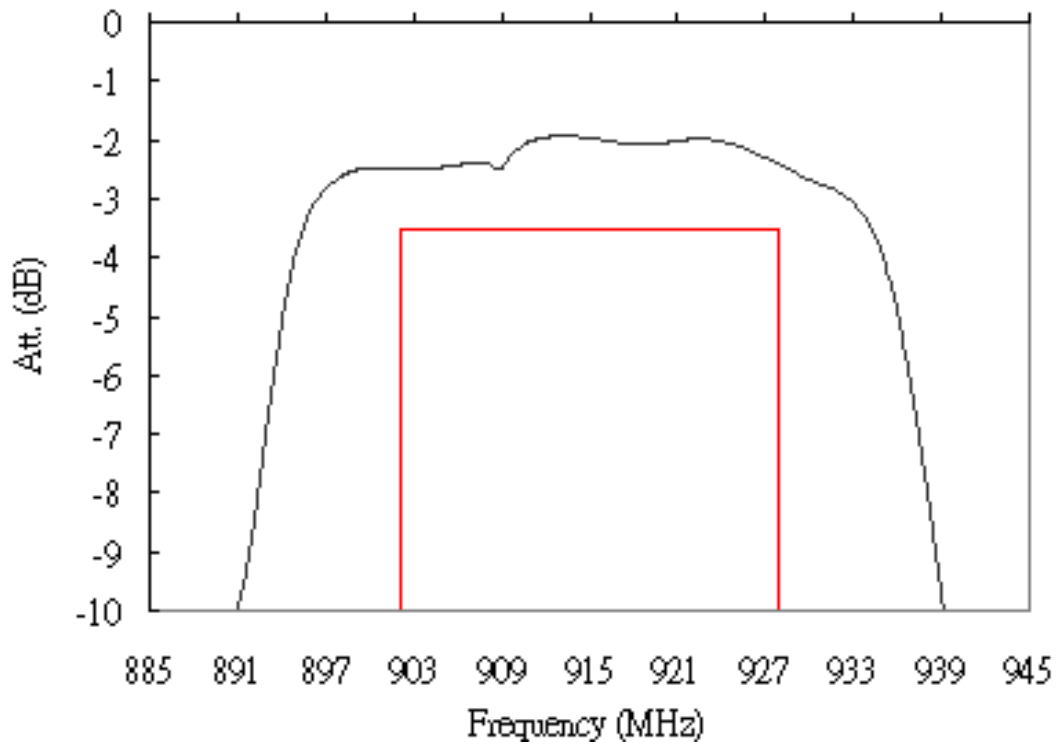
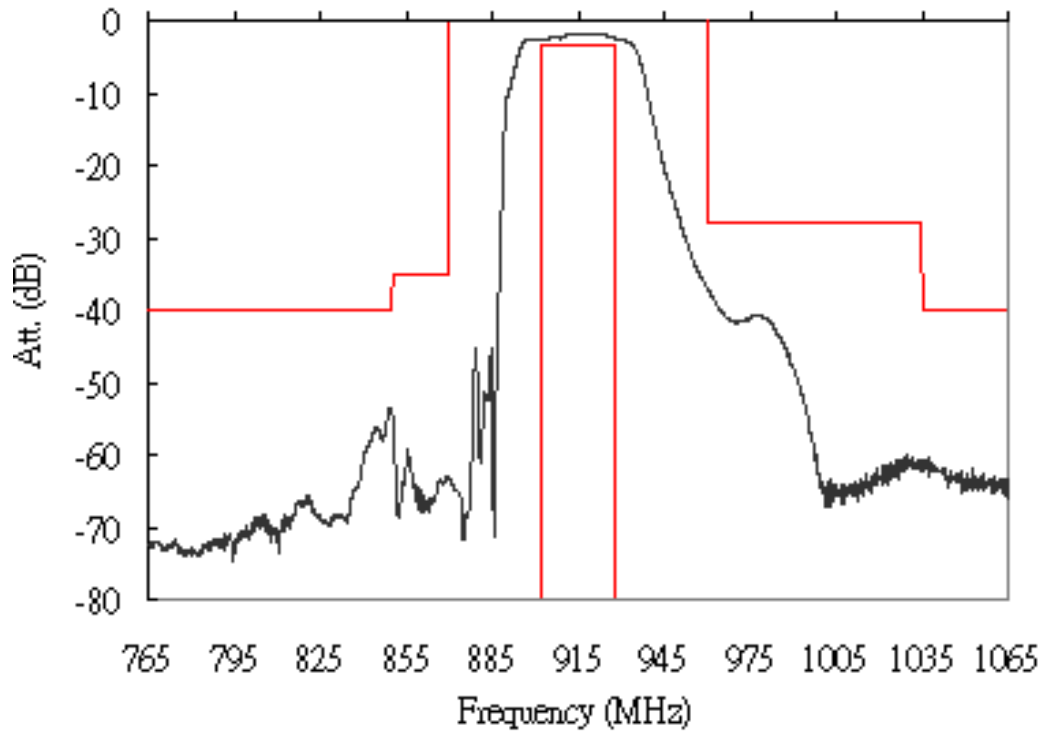
Terminating source impedance : $Z_s = 800 \Omega$ add matching circuit

Terminating load impedance : $Z_L = 50 \Omega$

Item			Value			Unit
			Min.	Typ.	Max.	
Center frequency	F_C	-	915	-	MHz	
Insertion loss	902~928 MHz I.L.	-	2.5	3.5	dB	
Ripple	902~928 MHz	-	0.5	2.0	dB	
VSWR	902~928 MHz	-	1.75	2.4		
Attenuation:(Reference level from 0 dB)						
	0 ~ 850 MHz	40	54	-	dB	
	850 ~ 870 MHz	35	54	-	dB	
	960 ~ 1035 MHz	28	36	-	dB	
	1035 ~ 1500 MHz	40	57	-	dB	
	1500 ~ 3000 MHz	30	56	-	dB	

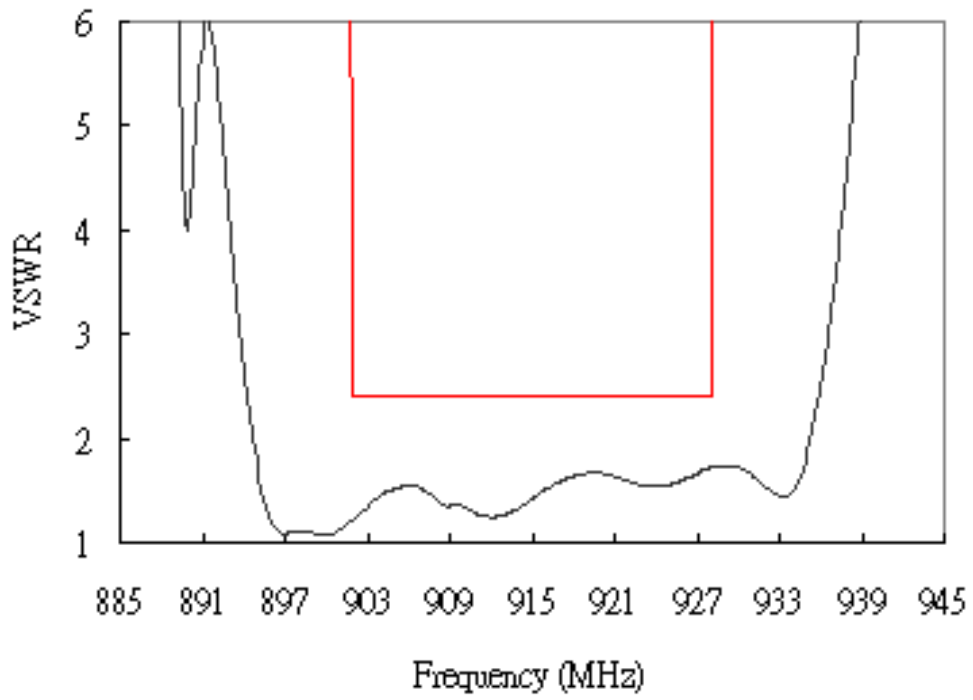
C. Frequency Characteristics :

Transfer Function

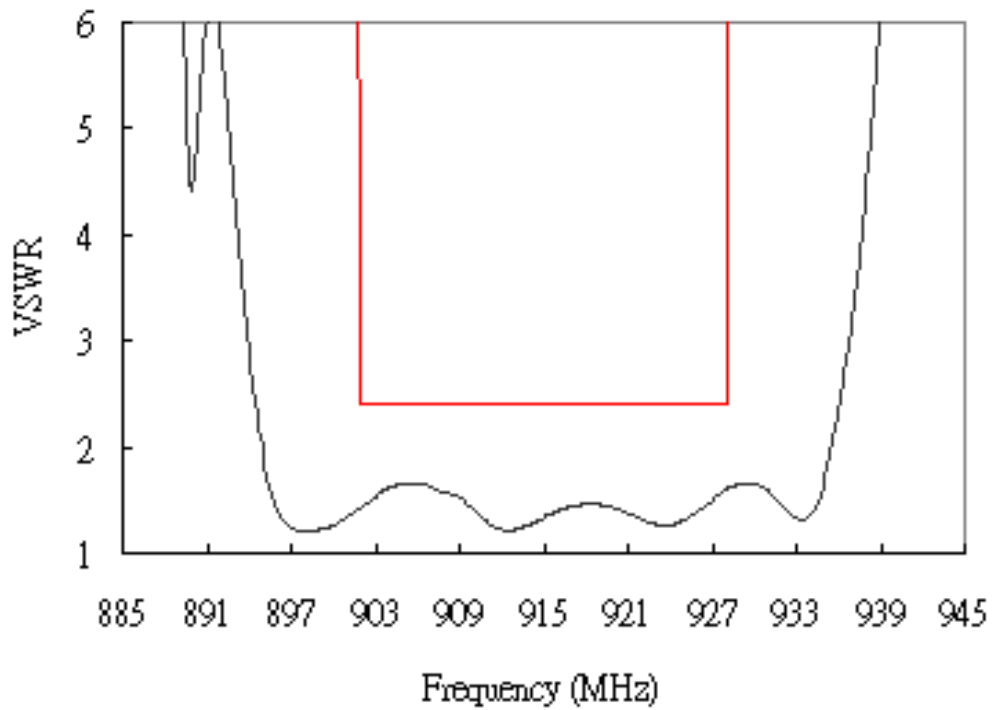


Reflection Function

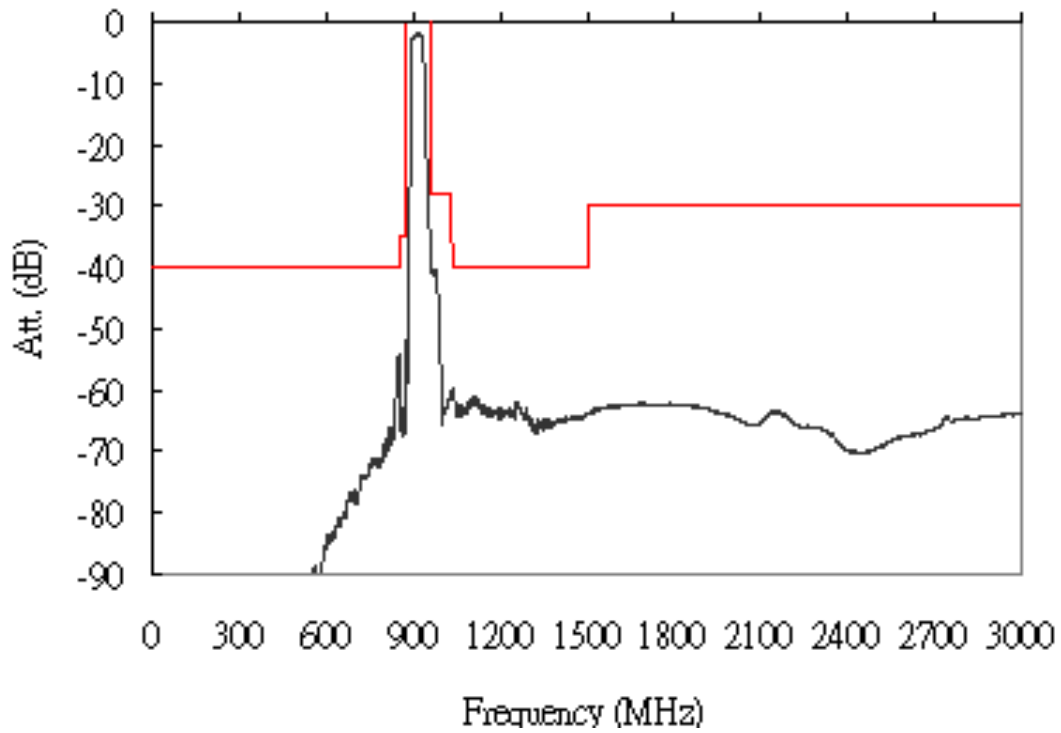
Sdd11



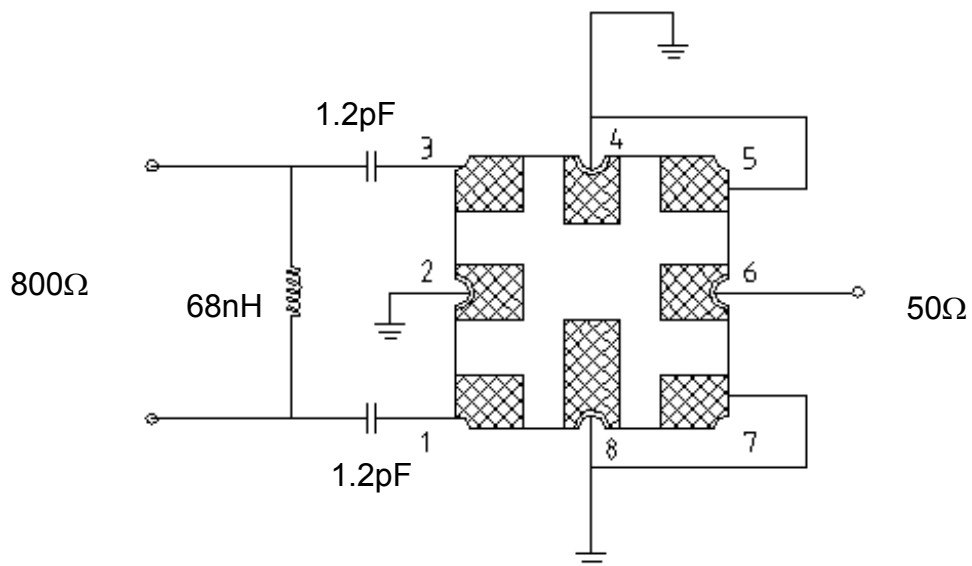
Sss22



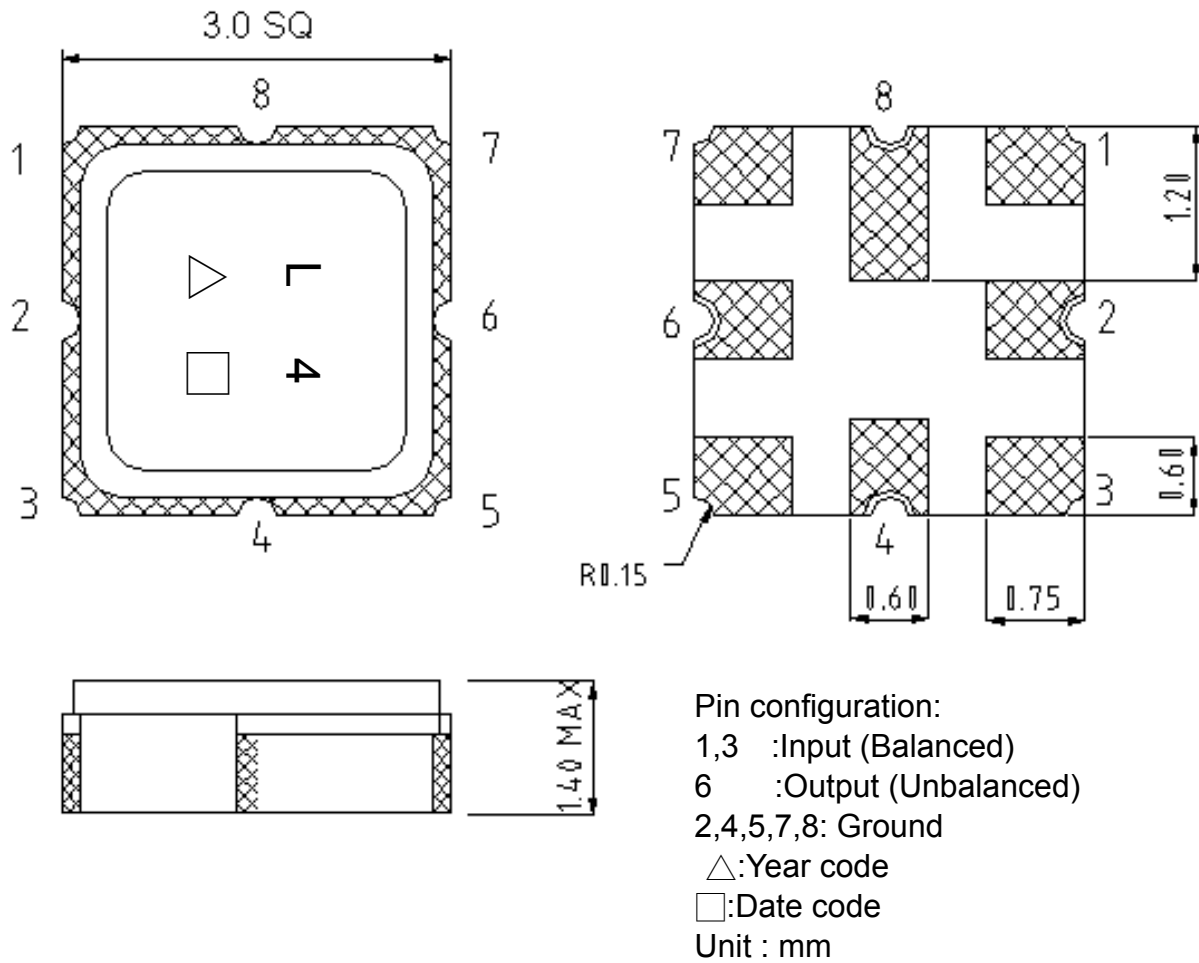
Wideband



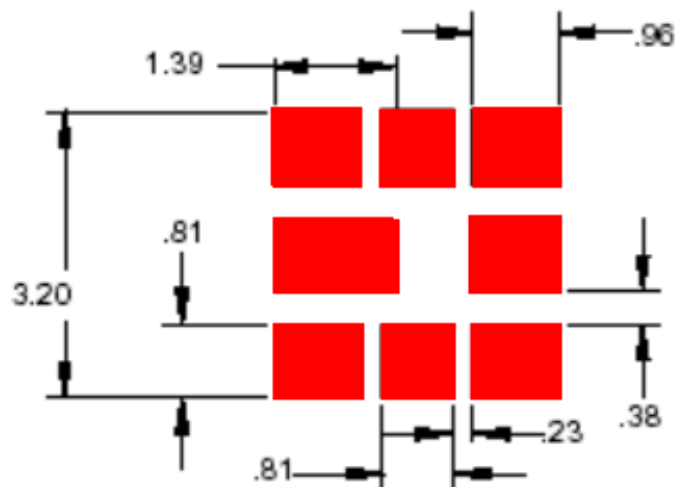
D. MEASUREMENT CIRCUIT:



E. OUTLINE DRAWING:

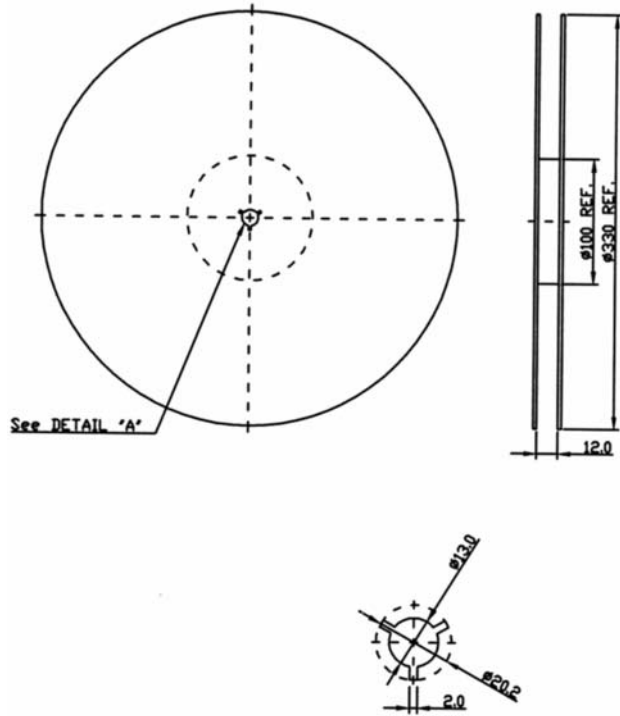


F. PCB FOOTPRINT:



G. PACKING:

1. REEL DIMENSION



2. TAPE DIMENSION

