

Features

- ◆ RoHS Compliant
- ◆ BeO free
- ◆ Designed for WiMax
- ◆ Low Insertion loss

Electrical Specifications¹:

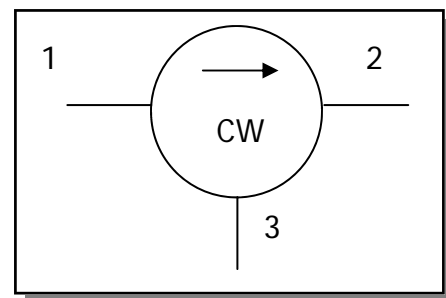
Parameter	Conditions	Units	Min	Typ	Max
Frequency Range		MHz	2300		2500
Impedance		Ω		50	
Insertion Loss		dB			0.25
Isolation		dB	20		
Return Loss	All ports	dB	20		
Intermodulation, 3rd order ²	2 x 30W CW tones, 5 MHz spacing	dBc		-63	-60

1. All specifications guaranteed over the frequency range and operating temperature range unless otherwise stated.
2. See Application Note ANI-001 for further details.

Pin Configuration

Terminal	Designation	Function
1	Port 1	In
2	Port 2	Out
3	Port 3	Out

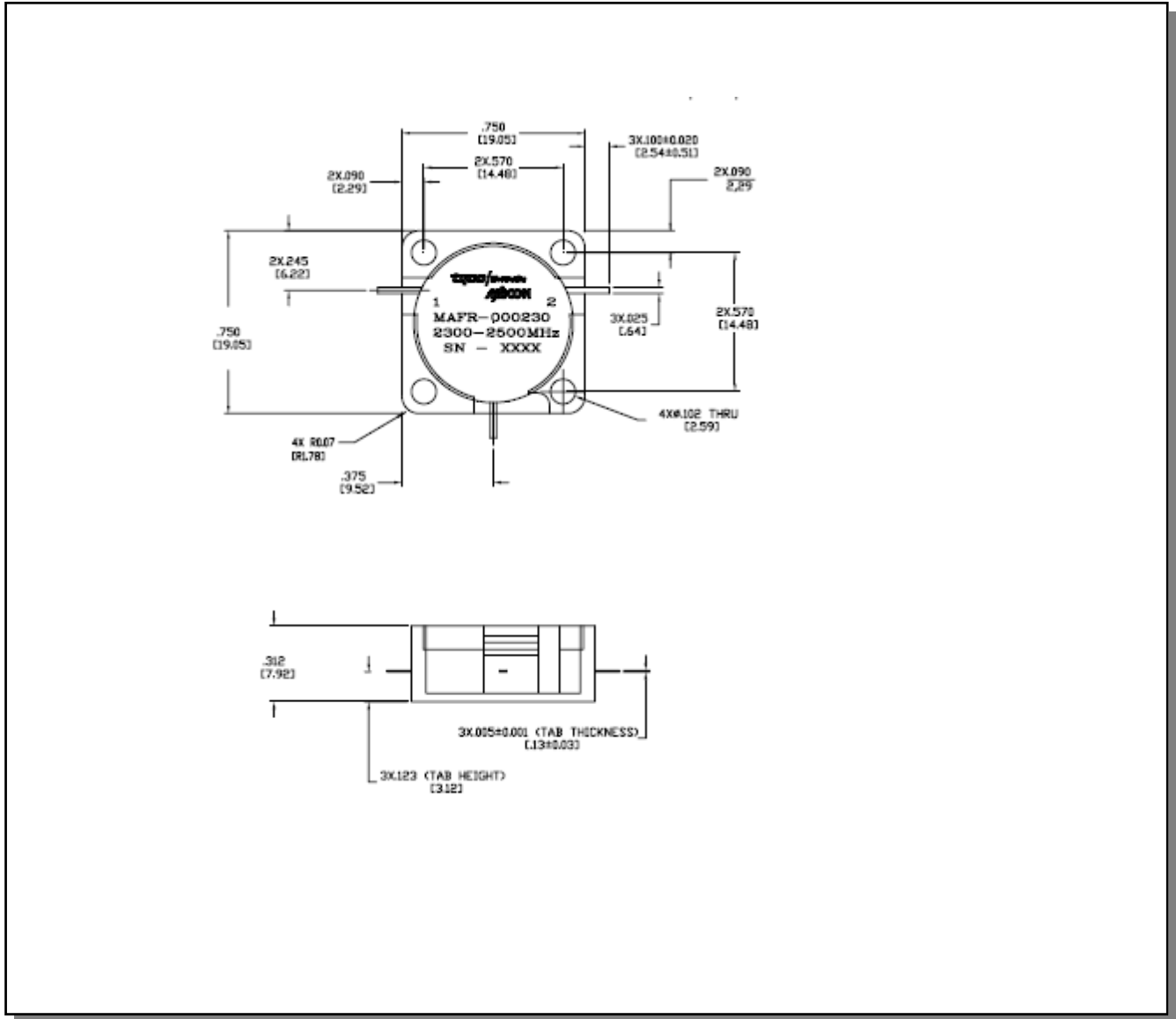
Functional Block Diagram



Absolute Maximum Ratings

Parameter	Conditions	Units	Min	Max
Average Input Power		W		500
Peak Input Power		W		1000
Operating Temperature Range		°C	-40	+85
Storage Temperature Range		°C	-40	+100

Outline Drawing



1. Tolerance: ± 0.2 mm unless otherwise noted.

Plating

Section	Material	Plating
Leads	Copper	Silver
Housing	Steel	Silver

ECO History

Rev	Date	Description	By
-	24/04/2007	Release Per 20067066	K sun
A	03/10/2008	Updated IM spec	BH