



TAI-SAW TECHNOLOGY CO., LTD.

No. 3, Industrial 2nd Rd., Ping-Chen Industrial District,
Taoyuan, 324, Taiwan, R.O.C.

TEL: 886-3-4690038 FAX: 886-3-4697532

E-mail: tstsales@mail.taisaw.com Web: www.taisaw.com

Product Specifications Approval Sheet

Product Description: SAW Filter 869.2625MHz SMD 3.8x3.8mm.

TST Part No.: TA0348A

Customer Part No.: _____

Customer signature required
Company: _____
Division: _____
Approved by : _____
Date: _____

Checked by: _____ Ricky Lee *Ricky*

Approved by: _____ Francis Chen *Francis*

Date: _____ 2009/11/18

1. Customer signed back is required before TST can proceed with sample build and receive orders.
2. Orders received without customer signed back will be regarded as agreement on the specifications.
3. Any specifications changes must be approved upon by both parties and a new revision of specifications shall be released to reflect the changes.



TAI-SAW TECHNOLOGY CO., LTD.

No. 3, Industrial 2nd Rd., Ping-Chen Industrial District,
Taoyuan, 324, Taiwan, R.O.C.

TEL: 886-3-4690038 FAX: 886-3-4697532

E-mail: tstsales@mail.taisaw.com Web: www.taisaw.com

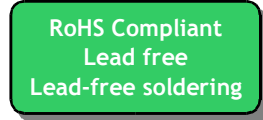
IF SAW Filter 869.2625MHz(BW=1.25MHz) SMD 3.8x3.8mm

MODEL NO.: TA0348A

REV.1.0

A. MAXIMUM RATING:

1. Input Power Level: 0 dB_m
2. DC voltage: 12 V
3. Operating Temperature: -45°C to +90°C
4. Storage Temperature: -45°C to +90°C



B. ELECTRICAL CHARACTERISTICS:

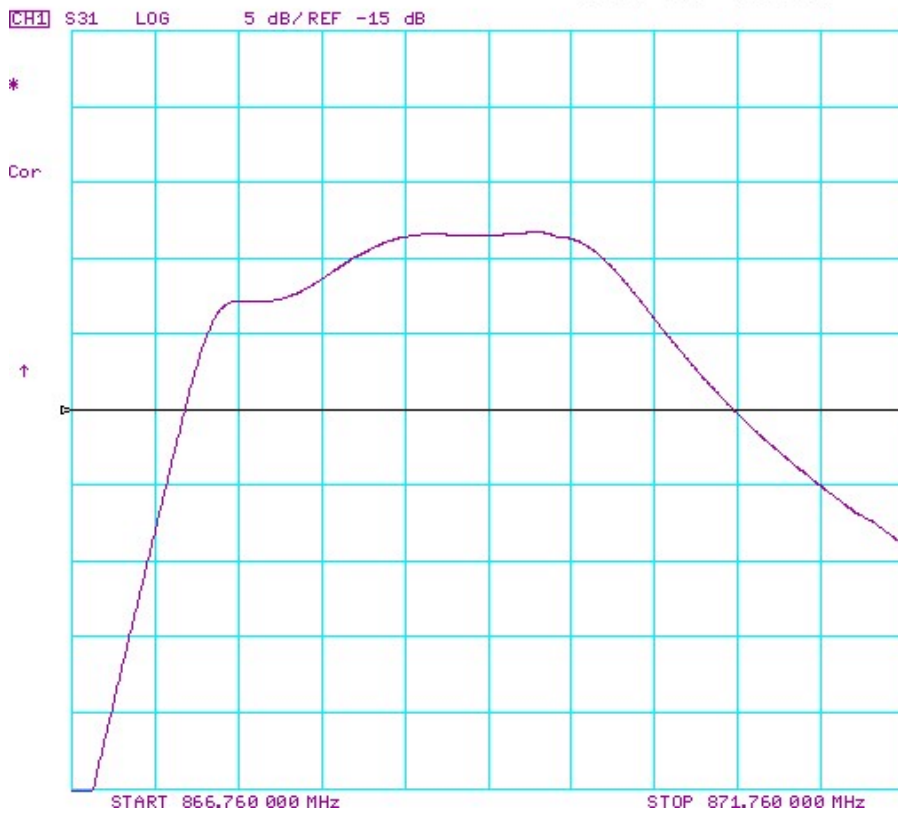
Reference temperature: -40°C to +85°C

Item	Min.	Typ.	Max.	Note
Center frequency F_c (MHz)	-	869.2625	-	1
Minimum I.L. (868.8725~869.6525 MHz) (dB) ILmin	-	3.3	4.5	
Pass band (relative to ILmin) 868.9125~869.6125 MHz (dB)	-	0.4	1.0	1
Pass bandwidth (relative to ILmin) BW1 (KHz)	-	1250	-	
Attenuation:(relative to ILmin) (dB)				
10~700 MHz (dB)	50	55	-	
700~842 MHz (dB)	35	40	-	
842~864 MHz (dB)	25	28	-	
864~866 MHz (dB)	15	24	-	1
871.26~872.07 MHz (dB)	10	15	-	
872.07~879 MHz (dB)	10	13	-	
879~909 MHz (dB)	15	20	-	
909~1000 MHz (dB)	40	45	-	
Impedance at F_c ; Input $Z_{IN}=R_{IN} // C_{IN}$ Output $Z_{OUT}=R_{OUT} // C_{OUT}$		117Ω // 3.7 pF 117Ω // 3.7 pF		

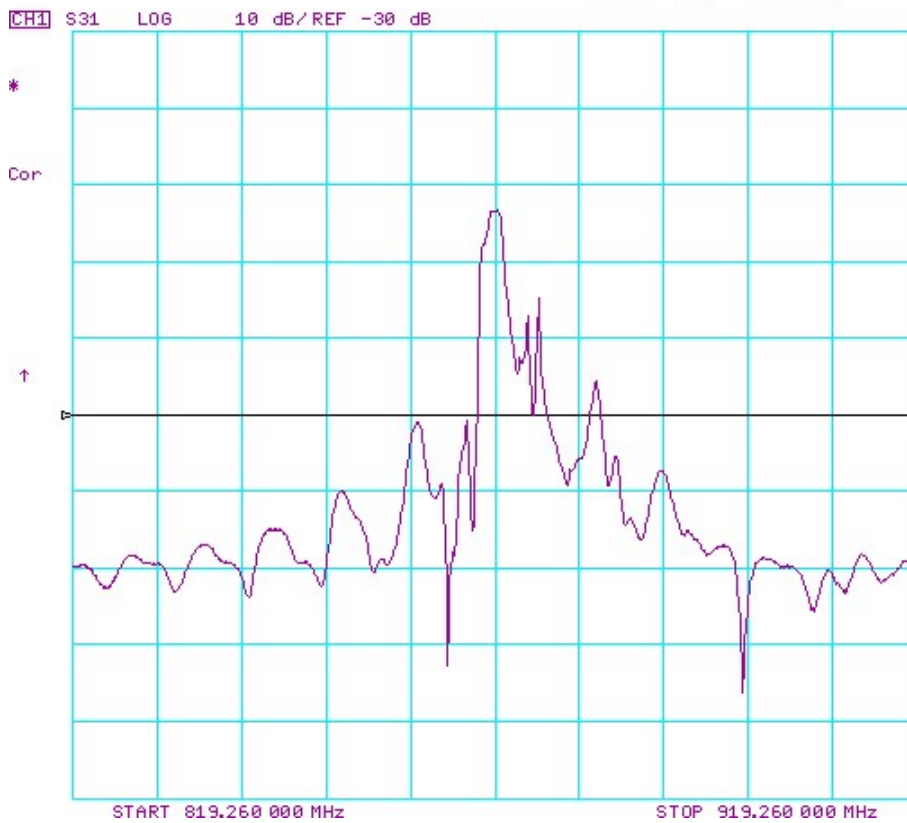
Note1. The standard definitions is in JIS C 6703

C. Frequency Characteristics :

12 Mar 2004 13:08:17

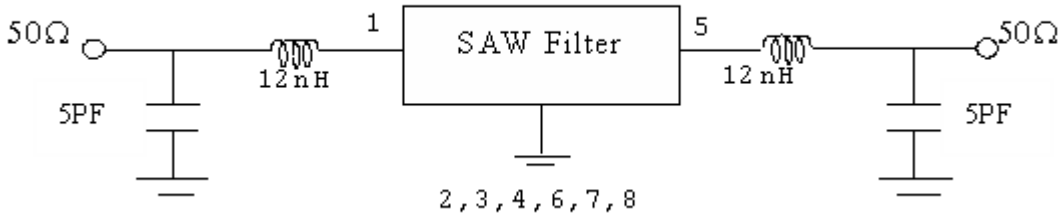


12 Mar 2004 13:09:01

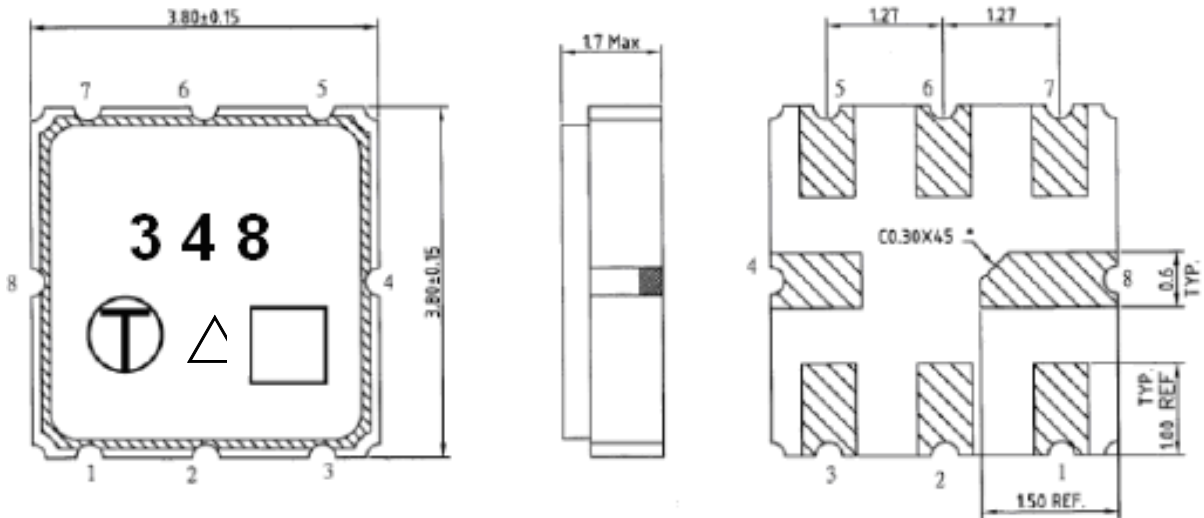


D. Measurement Circuit:

HP Network analyzer



E. Outline Drawing:



#1: Input or Input Ground

#2: Input Ground or Input

#5: Output or Output Ground

#6: Output Ground or Output

#4 , 8: Case Ground.

#3 , 7: Ground

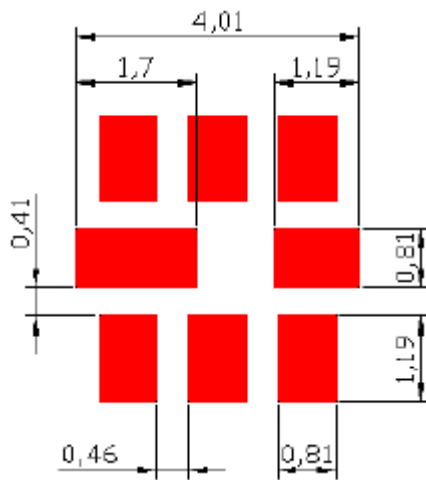
□ : Date code.(W01->A, W02->B,.....,W52->z)

△ : Year code

Unit: mm

Year	2009	2010	2011	2012
Product Code	A	a	<u>A</u>	<u>a</u>

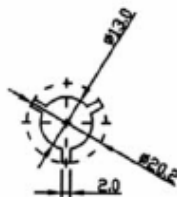
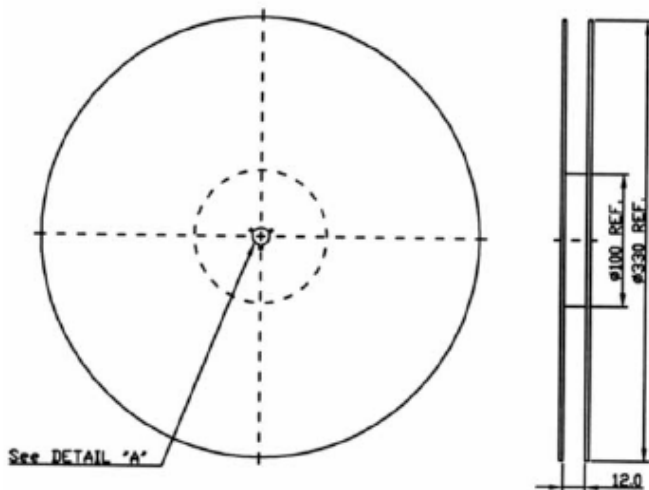
F. PCB Footprint:



Unit: mm

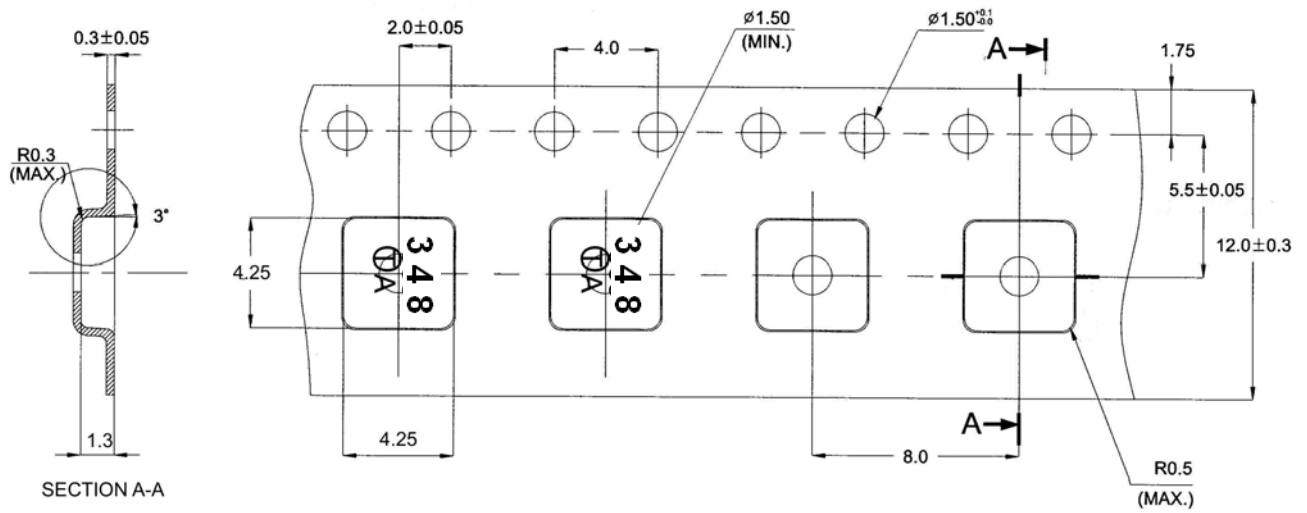
H. PACKING:

1. REEL DIMENSION



Unit: mm

2. TAPE DIMENSION



Unit: mm

I. RECOMMENDED REFLOW PROFILE_:

