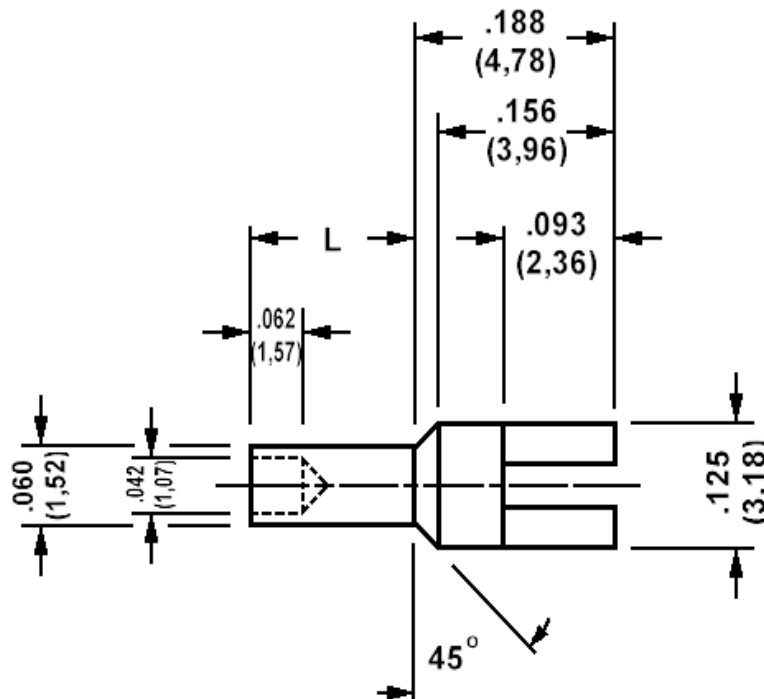


180-2926, Solder terminal, Slotted, .064 (1,61) mounting hole (#52 drill)

**How to order code****180-2926-XX-YY-00**

Basic Part No (XX=board thickness. YY = plating finish. See table for options)

Basic Part No		L	Board Thickness
180-2926	-01	.062 (1,57)	.031 (0,79)
	-02	.094 (2,39)	.062 (1,58)
	-03	.125 (3,18)	.094 (2,38)
	-04	.156 (3,96)	.125 (3,18)

Component	Material	Finish
		-05
Terminal	Brass	Electro Solder

Recommended Swaging Tools:-	Contact us for more tooling information
Anvil	435-6463-01-00-00
Flare Punch	435-6692-01-00-00

Mechanical tolerance unless otherwise stated $\pm .005(0,13)$