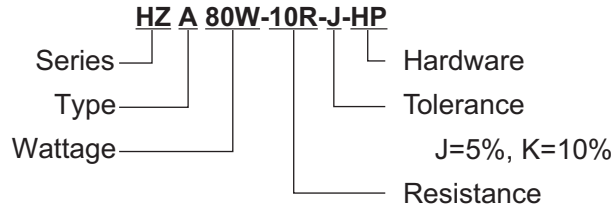


FEATURES

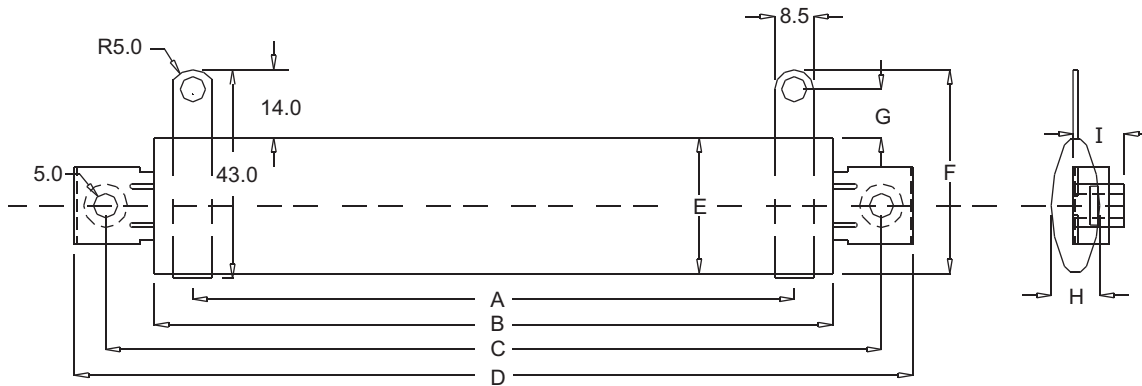
- Non-Flammable
- Low Resistance
- HZ - Wire Wound
- HQZ - Ribbon Winding

PART NUMBER EXAMPLE



A type : Fixed Resistor
N type : Non-inductively wound

Hardware: HS = Screw
HP = Press in Bracket
HX = Special
Omit = No Hardware



SPECIFICATIONS

Power Rating Watts		Dimensions (m/m)									Resistance Range Ohms
HZ	HQZ	A±2	B±2	C±2	D±2	E±1	F±1	G±1	H±1	I±1	
80W	120W	121.5	140	157	170	28	46	14	10	21.5	0.1Ω ~ 50KΩ
100W	150W	141.5	160	177	190	28	46	14	10	21.5	0.1Ω ~ 70KΩ
120W	180W	166.5	185	202	215	28	46	14	10	21.5	0.1Ω ~ 80KΩ
150W	225W	166.5	185	202	215	35	50	14	10	21.5	0.1Ω ~ 100KΩ
200W	300W	191.5	210	227	240	35	50	14	10	21.5	0.1Ω ~ 140KΩ
250W	375W	235.5	254	271	284	35	50	14	10	21.5	0.1Ω ~ 170KΩ
300W	450W	281.5	300	317	330	35	50	14	10	21.5	0.1Ω ~ 200KΩ

* Wattages under 80 watts are available. Contact RFE International, Inc. for details.

ELECTRICAL SPECIFICATION

Characteristics	Limits
Resistance and Tolerance	Resistance nominal $1\Omega \leq R$ $1\Omega > R$
	Resistance Tolerance $\pm 5\%$ (J) $\pm 10\%$ (K)
Temperature coefficient	$\pm 200\text{ppm}/^\circ\text{C}$ max.
Power rating load	$\Delta R/R \leq \pm(1\% + 0.05\Omega)$ (Temperature) 350°C max
Short-time overload	1000% rated power 5 seconds $\Delta R/R \leq \pm(2\% + 0.05\Omega)$
Insulation resistance	500Vdc 100M Ω min
Dielectric withstanding voltage	2000Vac 1 minute

ELECTRICAL CURVES

