

## Three Phase AC Controller Modules

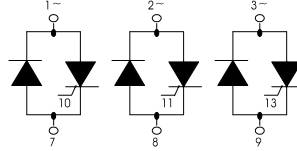
### PSUH 40

$I_{RMS}$  = 3 x 40A  
 $V_{RRM}$  = 400-1600 V

Preliminary Data Sheet

$V_{RSM}$ $V_{DSM}$	$V_{RRM}$ $V_{DRM}$	Type
500	400	PSUH 40/04
900	800	PSUH 40/08
1300	1200	PSUH 40/12
1500	1400	PSUH 40/14
*1700	*1600	PSUH 40/16

\* Delivery on request



Symbol	Test Conditions	Maximum Ratings
$I_{RMS}$	$T_C = 85^\circ\text{C}$ , 50-400 Hz (per phase)	40 A
$I_{TRMS}$	$T_{VJ} = T_{VJM}$	29 A
$I_{TAVM}$	$T_C = 85^\circ\text{C}$ 180° sine	18 A
$I_{TSM}$	$T_{VJ} = 45^\circ\text{C}$ t = 10 ms (50 Hz), sine	400 A
	$V_R = 0$ t = 8.3 ms (60 Hz), sine	450 A
	$T_{VJ} = T_{VJM}$ t = 10 ms (50 Hz), sine	360 A
	$V_R = 0$ t = 8.3 ms (60 Hz), sine	390 A
$\int i^2 dt$	$T_{VJ} = 45^\circ\text{C}$ t = 10 ms (50 Hz), sine	800 $\text{A}^2\text{s}$
	$V_R = 0$ t = 8.3 ms (60 Hz), sine	850 $\text{A}^2\text{s}$
	$T_{VJ} = T_{VJM}$ t = 10 ms (50 Hz), sine	650 $\text{A}^2\text{s}$
	$V_R = 0$ t = 8.3 ms (60 Hz), sine	640 $\text{A}^2\text{s}$
$(di/dt)_{cr}$	$T_{VJ} = T_{VJM}$ repetitive, $I_T = 150\text{A}$ f = 50Hz, $t_p = 200\mu\text{s}$ $V_D = 2/3 V_{DRM}$	100 $\text{A}/\mu\text{s}$
	$I_G = 0.3\text{A}$ non repetitive, $I_T = I_{TAVM}$	500 $\text{A}/\mu\text{s}$
	$di_G/dt = 0.3\text{A}/\mu\text{s}$	
$(dv/dt)_{cr}$	$T_{VJ} = T_{VJM}$ $V_{DR} = 2/3 V_{DRM}$ $R_{GK} = \infty$ , method 1 (linear voltage rise)	1000 $\text{V}/\mu\text{s}$
$P_{GM}$	$T_{VJ} = T_{VJM}$ $t_p = 30\mu\text{s}$	10 W
	$I_T = I_{TAVM}$ $t_p = 300\mu\text{s}$	5 W
$P_{GAVM}$		0.5 W
$V_{RGM}$		10 V
$T_{VJ}$		-40 ... + 125 $^\circ\text{C}$
$T_{VJM}$		125 $^\circ\text{C}$
$T_{stg}$		-40 ... + 125 $^\circ\text{C}$
$V_{ISOL}$	50/60 HZ, RMS t = 1 min	2500 V ~
	$I_{ISOL} \leq 1\text{mA}$ t = 1 s	3000 V ~
$M_d$	Mounting torque (M5)	5 Nm
	Terminal connection torque (M3)	1.5 Nm
	(M5)	5 Nm
Weight	typ.	220 g

### Features

- Thyristor controller for AC (circuit W3C acc. to IEC) for mains frequency
- Isolation voltage 3000 V~
- Planar glasspassivated chips
- Package with metal base plate
- UL registered E 148688

### Applications

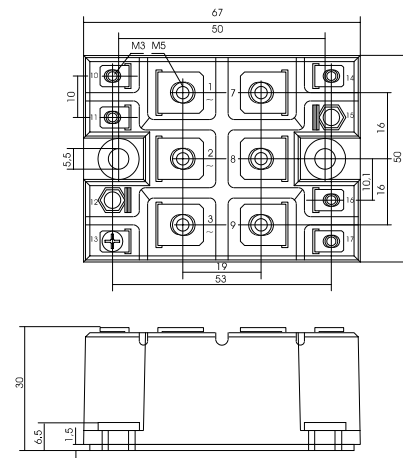
- Switching and control of three phase AC circuits
- Light and temperature control
- Softstart AC motor controller
- Solid state switches

### Advantages

- Easy to mount with two screws
- Space and weight savings
- Improved temperature and power cycling capability
- High power density

### Package, stil and outline

Dimensions in mm (1mm = 0.0394")



Symbol	Test Conditions	Characteristic Value			
$I_D, I_R$	$T_{VJ} = T_{VJM}, V_R = V_{RRM}, V_D = V_{DRM}$	$\leq$	5	mA	
$V_T$	$I_T = 80A, T_{VJ} = 25^\circ C$	$\leq$	1.65	V	
$V_{TO}$	For power-loss calculations only ( $T_{VJ} = T_{VJM}$ )		0.85	V	
$r_T$			15	m $\Omega$	
$V_{GT}$	$V_D = 6V$	$T_{VJ} = 25^\circ C$	$\leq$	1.0	V
		$T_{VJ} = -40^\circ C$	$\leq$	1.6	V
$I_{GT}$	$V_D = 6V$	$T_{VJ} = 25^\circ C$	$\leq$	100	mA
		$T_{VJ} = -40^\circ C$	$\leq$	150	mA
$V_{GD}$	$T_{VJ} = T_{VJM}, V_D = 2/3 V_{DRM}$	$\leq$	0.2	V	
$I_{GD}$	$T_{VJ} = T_{VJM}, V_D = 2/3 V_{DRM}$	$\leq$	5	mA	
$I_L$	$T_{VJ} = 25^\circ C, t_p = 10\mu s$	$\leq$	200	mA	
	$I_G = 0.3A, di_G/dt = 0.3A/\mu s$				
$I_H$	$T_{VJ} = 25^\circ C, V_D = 6V, R_{GK} = \infty$	$\leq$	150	mA	
$t_{gd}$	$T_{VJ} = 25^\circ C, V_D = 1/2 V_{DRM}$	$\leq$	2	$\mu s$	
	$I_G = 0.3A, di_G/dt = 0.3A/\mu s$				
$t_q$	$T_{VJ} = T_{VJM}, I_T = 20A, t_p = 200\mu s, V_R = 100V$		150	$\mu s$	
	$-di/dt = 10A/\mu s, dv/dt = 15V/\mu s, V_D = 2/3 V_{DRM}$				
$R_{thJC}$	per thyristor; sine 180°el		1.43	K/W	
	per module		0.238	K/W	
$R_{thJK}$	per thyristor; sine 180° el		1.53	K/W	
	per module		0.255	K/W	
$d_s$	Creeping distance on surface		8.0	mm	
$d_A$	Creeping distance in air		4.5	mm	
$a$	Max. allowable acceleration		50	m/s <sup>2</sup>	