

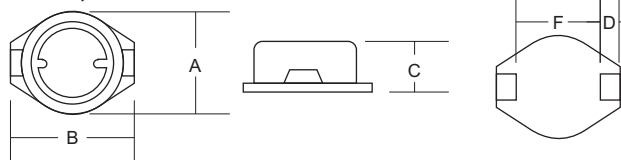
SURFACE MOUNT INDUCTOR

ICS Series: Shielded Power Choke

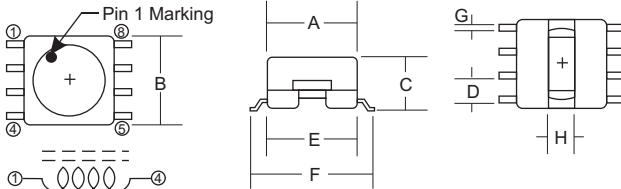
Inductance	ICS0804					ICS0805				ICS0906			ICS0908			ICS1003					
	uH	Code	Tolerance %	DC Resistance ()	Rated Current (A)	Tolerance %	Code	DC Resistance ()	Rated Current (A)	Tolerance %	Code	DC Resistance ()	Rated Current (A)	Tolerance %	Code	DC Resistance ()	Rated Current (A)				
2.2	2R2					20%	M	0.040	2.50							20%	M	0.045	2.76		
3.9	3R9					20%	M	0.055	2.10												
4.7	4R7															20%	M	0.078	1.9		
5	5R0	20%	M	0.080	1.70																
5.6	5R6					20%	M	0.065	1.95												
7.5	7R5	20%	M	0.100	1.40											20%	M	0.100	1.44		
8.2	8R2					20%	M	0.080	1.75												
10	100	20%	M	0.120	1.20	20%	M	0.100	1.50	20%	M	0.800	1.80	20%	M	0.040	3.00	20%	M	0.145	1.24
12	120	20%	M	0.150	1.10	20%	M	0.120	1.40					20%	M	0.050	2.50				
15	150	20%	M	0.170	1.00	20%	M	0.140	1.30	20%	M	0.100	1.60	20%	M	0.065	2.20	20%	M	0.200	1.02
18	180	15%	Y	0.190	0.90	15%	Y	0.160	1.20					20%	M	0.075	2.00				
22	220	15%	Y	0.250	0.80	15%	Y	0.180	1.10	20%	M	0.130	1.40	20%	M	0.080	1.90	20%	M	0.300	0.8
27	270	15%	Y	0.270	0.70	15%	Y	0.200	1.00					20%	M	0.090	1.80				
33	330	15%	Y	0.300	0.65	15%	Y	0.240	0.92	20%	M	0.150	1.20	20%	M	0.100	1.370	20%	M	0.450	0.7
39	390	15%	Y	0.380	0.60	15%	Y	0.260	0.84					20%	M	0.135	1.50				
47	470	10%	K	0.460	0.55	15%	Y	0.280	0.75	20%	M	0.180	1.00	20%	M	0.150	1.40	20%	M	0.650	0.6
56	560	10%	K	0.600	0.50	10%	K	0.380	0.68					20%	M	0.165	1.35				
68	680	10%	K	0.700	0.45	10%	K	0.440	0.60	20%	M	0.350	0.85	20%	M	0.184	1.25	20%	M	0.800	0.48
82	820	10%	K	0.800	0.40	10%	K	0.550	0.54					20%	M	0.260	1.05				
100	101					10%	K	0.600	0.50	15%	Y	0.420	0.70	15%	Y	0.28	1000	20%	M	1.400	0.4
120	121					10%	K	0.750	0.45					15%	Y	0.34	900				
150	151									15%	Y	0.550	0.60	15%	Y	0.45	800	20%	M	1.800	0.32
180	181													15%	Y	0.50	700				
220	221									15%	Y	1.000	0.48	15%	Y	0.60	650	20%	M	2.200	0.26
270	271													15%	Y	0.70	600				
330	331									15%	Y	1.300	0.40	15%	Y	0.80	550				
390	391													15%	Y	1.00	500				
470	471									15%	Y	1.600	0.35	15%	Y	1.15	450				
560	561													15%	Y	1.50	380				
680	681									15%	Y	3.200	0.25	15%	Y	1.70	350				
820	821													15%	Y	2.20	320				
1000	102									15%	Y	4.000	0.22	15%	Y	2.50	300				
1500	152									15%	Y	5.200	0.18	15%	Y	4.00	250				
2200	222									15%	Y	8.500	0.16	15%	Y	5.00	200				
3300	332									15%	Y	11.000	0.12	15%	Y	8.00	150				
4700	472									15%	Y	19.000	0.10	15%	Y	12.00	120				
6800	682									15%	Y	24.000	0.09	15%	Y	16.50	100				
10000	103									15%	Y	38.000	0.07	15%	Y	26.00	95				
50000	153									15%	Y	40.00	75								

DIMENSIONS (mm)

0804, 0805 & 1003

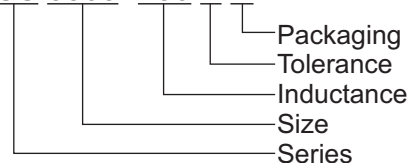


0906 & 0908



PART NUMBER EXAMPLE

ICS 0805 -180 Y R



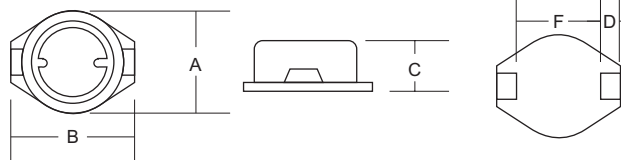
DIMENSIONS (mm)

Series	Dimension							
	A	B	C	D	E	F	F1	W
ICS0804	8.0±0.2	10.5±0.2	3.7±0.3	2.1±0.2	2.0±0.2	6.0±0.3		
ICS0805	8.0±0.2	10.5±0.2	4.5±0.3	2.1±0.2	2.0±0.2	6.0±0.3		
ICS0906	9.5±0.3	10.5	6.0±0.3		2.5±0.3	11.0±0.5	12.7±0.8	0.7±0.1
ICS0908	9.5±0.3	10.5	7.5±0.3		2.5±0.3	11.0±0.5	12.7±0.8	0.7±0.1
ICS1003	10.3±0.2	12.7±0.2	2.7±0.3	2.4±0.2	2.5±0.2	7.6±0.3		

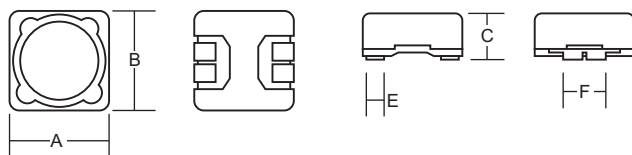
Inductance	uH	Code	ICS1005				ICS1205				ICS1206				ICS1208			
			Tolerance		DC Resistance (Ω)	Rated Current (A)	Tolerance		DC Resistance (Ω)	Rated Current (A)	Tolerance		DC Resistance (Ω)	Rated Current (A)	Tolerance		DC Resistance (Ω)	Rated Current (A)
			%	Code			%	Code			%	Code			%	Code		
2.2	2R2		20%	M	0.027	3.10												
2.5	2R5		20%	M			20%	M	24.000	5.00	20%	M	0.016	6.20	20%	M	0.011	7.50
3	3R0		20%	M	0.030	2.90												
3.9	3R9																	
4.5	4R5														20%	M	0.014	6.50
4.7	4R7		20%	M	0.040	2.50												
5	5R0		20%	M	0.04	2.45	20%	M	35.000	4.00	20%	M	0.022	4.70				
5.6	5R6																	
6.5	6R5														20%	M	0.018	6.00
7	7R0		20%	M	0.055	2.20												
7.5	7R5										20%	M	0.025	3.80				
8.2	8R2																	
10	100		20%	M	0.065	2.00	20%	M	54.000	3.00	20%	M	0.035	3.30	20%	M	0.021	5.00
12	120		20%	M	0.080	1.80					20%	M	0.038	3.00	20%	M	0.025	4.80
15	150		20%	M	0.085	1.70					20%	M	0.042	2.80	20%	M	0.036	4.00
18	180		15%	Y	0.090	1.60					20%	M	0.050	2.50	20%	M	0.040	3.80
22	220		15%	Y	0.100	1.40					20%	M	0.062	2.30	20%	M	0.043	3.50
25	250						20%	M	120.000	2.00								
27	270		15%	Y	0.120	1.30					20%	M	0.068	2.00	20%	M	0.048	3.00
33	330		15%	Y	0.160	1.20					15%	Y	0.090	1.90	15%	Y	0.062	2.80
39	390		15%	Y	0.180	1.05					15%	Y	0.100	1.75	15%	Y	0.076	2.50
47	470		15%	Y	0.190	1.00					15%	Y	0.130	1.60	15%	Y	0.085	2.20
50	500						15%	M	200.000	1.50								
56	560		15%	Y	0.210	0.90					15%	Y	0.155	1.45	15%	Y	0.110	2.00
68	680		15%	Y	0.340	0.82					15%	Y	0.170	1.30	15%	Y	0.135	1.80
75	750						15%	M	330.000	1.20								
82	820		15%	Y	0.380	0.75					15%	Y	0.185	1.20	15%	Y	0.150	1.60
100	101		10%	K	0.420	0.68	10%	M	400.000	1.00	15%	Y	0.220	1.10	15%	Y	0.170	1.50
120	121		10%	K	0.460	0.60					15%	Y	0.260	1.00				
150	151		10%	K	0.520	0.55					10%	K	0.320	0.90				
180	181		10%	K	0.700	0.50					10%	K	0.330	0.80				
220	221		10%	K	0.800	0.45					10%	K	0.460	0.70	10%	K	0.380	1.10
270	271		10%	K	1.100	0.40					10%	K	0.520	0.65				
330	331		10%	K	1.200	0.35					10%	K	0.660	0.60	10%	K	0.650	0.85
390	391		10%	K	1.400	0.33					10%	K	0.870	0.55				
470	471										10%	K	0.970	0.50	10%	K	0.850	0.70
560	561										10%	K	1.320	0.45				
680	681										10%	K	1.500	0.40				
820	821										10%	K	1.700	0.35				
1000	102														10%	K	1.650	0.50
1500	152																	
2200	222																	
3300	332																	
4700	472																	
6800	682																	
10000	103																	
15000	153																	

DIMENSIONS (mm)

1005



1205, 1206 & 1208



PART NUMBER EXAMPLE

ICS 1206 -180 M R



DIMENSIONS (mm)

Series	Dimension					
	A	B	C	D	E	F
ICS1005	10.0±0.2	12.7±0.2	4.9±0.3	2.4±0.2	2.5±0.2	7.6±0.3
ICS1205	12.7±0.3	12.7±0.3	5.0±0.5		2.3±0.2	5.0±0.2
ICS1206	12.7±0.3	12.7±0.3	6.0±0.5		2.3±0.2	5.0±0.2
ICS1208	12.7±0.3	12.7±0.3	8.0±0.5		2.3±0.2	5.0±0.2