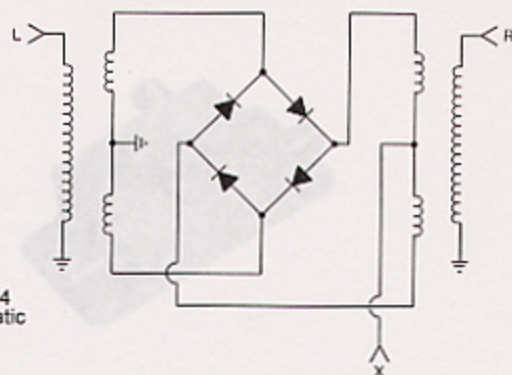
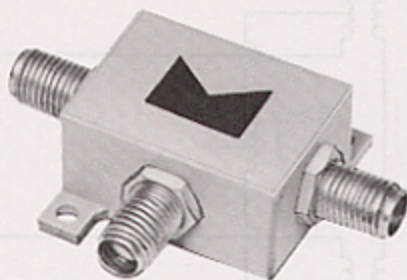


5 to 1000 MHz / +13 to +24 dBm LO / SMA Connectors

DMM-4  
Schematic

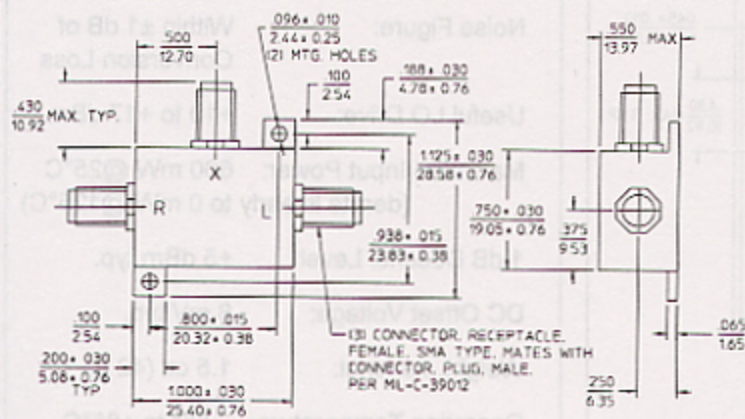
1.32

## PRINCIPAL SPECIFICATIONS

Model Number	RF/LO Frequency, MHz	LO Drive, dBm, Nom.	IF, MHz	Operating Range, MHz	Conversion Loss, dB		Port Isolation, Min. dB			1 dB Compr. Point, dBm	Input Intercept Point, dBm	1 dB Desens. Level, dBm
					Max.	Typ.	L-R	L-X	R-X			
DMM-4-250	5 - 500	+13	DC-500	5-100	9.0	5.5	40	25	20	+8	+19	+6
				100 - 400	8.0	6.5	30	15	15			
				400-500	9.0	7.5	30	15	15			
DMM-12-500	10-1000	+24	DC-500	10-100	7.0	6.0	45	35	—	+16	+28	+14
				100-500	7.0	6.5	25	25	—			
				500-1000	9.5	8.5	20	15	—			

All specifications are as measured in a 50Ω system, at nominal LO power, in a downconverter application

## Package Outline

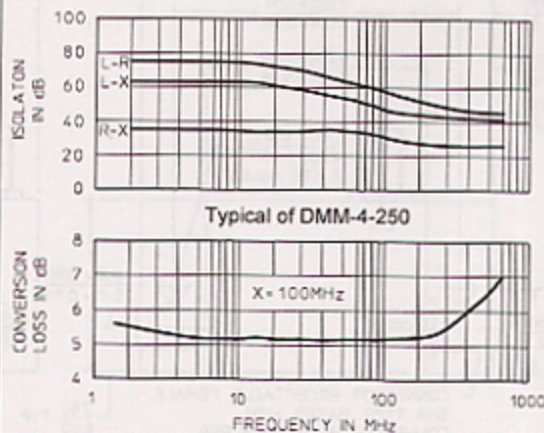


NOTES: 1. Tolerance on 3 place decimals  $\pm 0.020$  (.51) except as noted.  
2. Dimensions in inches over millimeters.

## General Notes:

The DMM-4-250 and DMM-12-500 Double Balanced Mixers cover the frequency range of 5 to 1000 MHz. The DMM-4-250 uses four high barrier diodes in the ring modulator to yield a mixer with high third order intercept. The DMM-12-500 mixer uses twelve high barrier diodes to achieve similarly high performance.

24May96



## GENERAL SPECIFICATIONS

Impedance:	50 Ω nom.
Useful LO Drive:	$\pm 3$ dB of nominal
SSB Noise Figure:	Within $\pm 1$ dB of Conversion Loss
DC Offset Voltage:	5 mV typ.
DC Polarity:	Positive
Weight, nominal:	0.65 oz (18 g)
Operating Temperature:	$-55^{\circ}$ to $+85^{\circ}$ C