

# Coaxial Amplifier

## ZHL-2-8

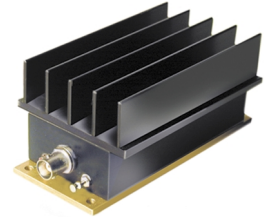
50Ω Medium High Power 10 to 1000 MHz

### Features

- wideband, 10 to 1000 MHz
- high IP3, +38 dBm typ.
- medium high power, 29 dBm min.

### Applications

- VHF/UHF
- test equipment
- cellular
- instrumentation
- laboratory



BNC version shown

CASE STYLE: T34

| Connectors | Model     | Price    | Qty.  |
|------------|-----------|----------|-------|
| BNC        | ZHL-2-8   | \$525.00 | (1-9) |
| SMA        | ZHL-2-8-S | \$535.00 | (1-9) |

### Electrical Specifications

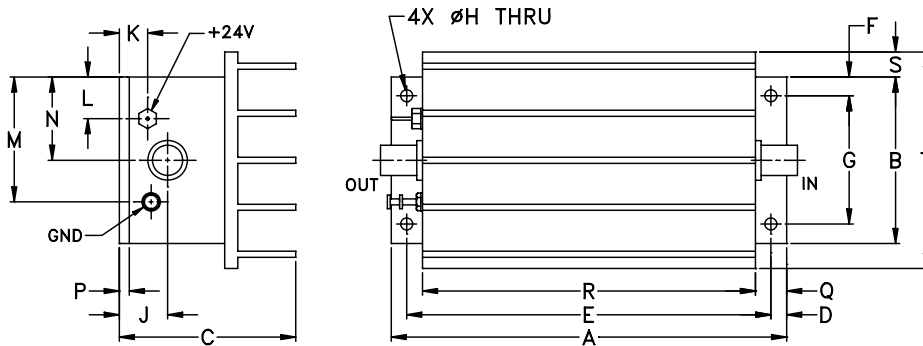
| MODEL NO. | FREQ. (MHz) |       | GAIN (dB) |               | MAXIMUM POWER OUTPUT (dBm) |                   | DYNAMIC RANGE |                | VSWR (-1) Max. |     | DC POWER      |                  |
|-----------|-------------|-------|-----------|---------------|----------------------------|-------------------|---------------|----------------|----------------|-----|---------------|------------------|
|           | $f_L$       | $f_U$ | Min.      | Flatness Max. | (1 dB Compr.) Min.         | Input (no damage) | NF (dB) Typ.  | IP3 (dBm) Typ. | In             | Out | Volt (V) Nom. | Current (A) Max. |
| ZHL-2-8   | 10          | 1000  | 27        | ±1.0          | +29                        | +5                | 10.0          | +38            | 2.0            | 2.0 | 24            | 0.6              |

Open load is not recommended, potentially can cause damage.  
With no load derate max input power by 20 dB

### Maximum Ratings

|                       |                |
|-----------------------|----------------|
| Operating Temperature | -20°C to 65°C  |
| Storage Temperature   | -55°C to 100°C |
| DC Voltage            | +25V Max.      |

### Outline Drawing



### Outline Dimensions (inch/mm)

| A      | B     | C     | D    | E      | F    | G     | H    | J     | K    | L     | M     | N     | P    | Q    | R      | S    | T     | wt    |
|--------|-------|-------|------|--------|------|-------|------|-------|------|-------|-------|-------|------|------|--------|------|-------|-------|
| 4.75   | 2.00  | 2.12  | .19  | 4.375  | .23  | 1.540 | .144 | .58   | .34  | .50   | 1.50  | 1.00  | .12  | .38  | 4.00   | .30  | 2.60  | grams |
| 120.65 | 50.80 | 53.85 | 4.83 | 111.13 | 5.84 | 39.12 | 3.66 | 14.73 | 8.64 | 12.70 | 38.10 | 25.40 | 3.05 | 9.65 | 101.60 | 7.62 | 66.04 | 440.0 |

**Mini-Circuits®**  
ISO 9001 ISO 14001 CERTIFIED

ALL NEW  
minicircuits.com

P.O. Box 350166, Brooklyn, New York 11235-0003 (718) 934-4500 Fax (718) 332-4661 For detailed performance specs & shopping online see Mini-Circuits web site



The Design Engineers Search Engine Provides ACTUAL Data Instantly From MINI-CIRCUITS At: [www.minicircuits.com](http://www.minicircuits.com)

RF/IF MICROWAVE COMPONENTS

REV. OR  
M98142  
ZHL-2-8  
071004  
Page 1 of 2

| FREQUENCY (MHz) | GAIN (dB) |       |       | DIRECTIVITY (dB) |       |       | VSWR (:1) |      | NOISE FIGURE (dB) | POUT at 1 dB COMPR. (dBm) |
|-----------------|-----------|-------|-------|------------------|-------|-------|-----------|------|-------------------|---------------------------|
|                 | 23V       | 24V   | 24.5V | 23V              | 24V   | 24.5V | IN        | OUT  | 24V               | 24V                       |
| 10.00           | 28.91     | 28.90 | 28.90 | 32.50            | 32.50 | 33.90 | 1.52      | 1.77 | 6.17              | 30.73                     |
| 22.60           | 29.36     | 29.36 | 29.36 | 35.40            | 32.20 | 31.70 | 1.31      | 1.61 | 5.73              | 31.05                     |
| 66.80           | 29.45     | 29.44 | 29.44 | 34.90            | 28.00 | 34.70 | 1.26      | 1.58 | 5.26              | 31.27                     |
| 197.60          | 29.47     | 29.46 | 29.47 | 31.20            | 35.30 | 33.00 | 1.26      | 1.63 | 5.22              | 31.10                     |
| 390.80          | 29.34     | 29.33 | 29.34 | 36.40            | 30.90 | 32.60 | 1.27      | 1.44 | 5.27              | 30.40                     |
| 492.30          | 29.38     | 29.37 | 29.37 | 30.50            | 34.80 | 32.50 | 1.28      | 1.21 | 5.32              | 30.02                     |
| 619.20          | 29.39     | 29.38 | 29.38 | 28.50            | 28.70 | 30.80 | 1.25      | 1.02 | 5.38              | 29.65                     |
| 746.20          | 28.95     | 28.94 | 28.94 | 27.60            | 27.60 | 27.90 | 1.28      | 1.05 | 5.51              | 29.56                     |
| 873.10          | 29.05     | 29.03 | 29.03 | 26.30            | 24.60 | 25.90 | 1.50      | 1.18 | 5.74              | 29.69                     |
| 1000.00         | 29.06     | 29.05 | 29.05 | 21.70            | 23.10 | 22.20 | 1.26      | 1.82 | 6.09              | 29.32                     |

