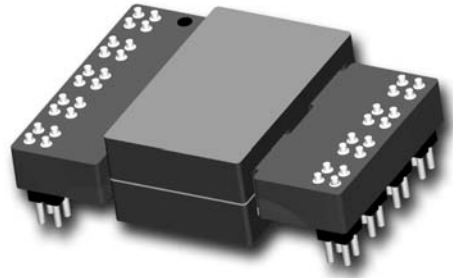


AC-DC SERIES: P232

Third generation of planar transformers

Features

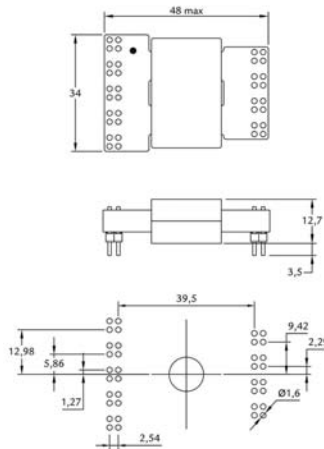
- High power planar transformer for AC/DC SMPS.
- According UL1950 / EN60950.
- UL 94V0 material.
- Storage temperature from -20°C to 130°C.
- Operating temperature -20°C to 85°C.
- Power up to 300W.



Electrical specifications

Part Number	Input Voltage Vdc (V)	Output Voltage (V)	Output Current (A)	Power (W)	Frequency (kHz)	Duty cycle	Topology	Inductance (mH±25%)	Typ Leakage Inductance (µH)	Turns Ratio (Pri:Sec)	Max Total losses (W)
P232WD4DP1	350-420	12	25	300	150	0,45	Forward dual	9,43	0,9	13:1	5
P232PP4DP1	350-420	24	12,5	300	150	0,47	Push - Pull	9,43	0,9	13:1	5
P232PP4DP2	350-420	48	6,25	300	150	0,45	Push - Pull	9,43	0,9	13:2	5

Dimensions



Recommended PCB layout

Schematics

