

- Snap Mount
- Downsize
- High Voltage
- High Ripple
- RoHS Compliant
- +105°C Maximum Temperature



The KMM series is a high voltage, long life snap-in capacitor series that offers downsized versions of the KMH series. The KMM capacitors have smaller case sizes and an extended rated lifetime compared to the KMH capacitors. These characteristics plus high ripple current capability make the KMM capacitors ideal for use in power supply filter circuits. The KMM capacitors are available in 2 or 4-pin snap-in styles and 4-pin straight terminals. The KMM series capacitors are RoHS compliant offering Pb-free construction.

The standard KMM series capacitors are *not* solvent proof. Refer to guidelines and precautions on the website for usage and installation conditions recommended for United Chemi-Con products.

Summary of Specifications

- PC board 2 or 4-pin snap-in; optional 4-pin straight terminals.
- Capacitance range: 39 to 3,300µF.
- Voltage range: 160 to 450VDC.
- Category temperature range: -25°C to +105°C.
- Leakage current: $3\sqrt{CV}$ (µA) maximum after 5 minutes at +20°C.
- Standard capacitance tolerance: ±20%
- Nominal case size (D × L): 20 × 20mm to 35 × 60mm.
- Rated lifetime: 2,000 to 3,000 hours at +105°C with the rated ripple current applied, depending on case size.

KMM Specifications - Snap Mount

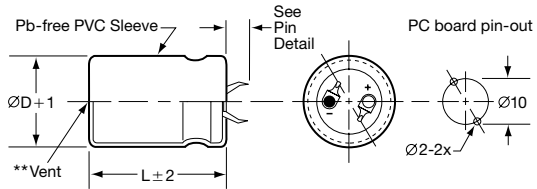
| Item | Characteristics | | | | | | | | | | | | | | | | | | | | | | | | | | | | | | | |
|------------------------------------|--|-----------------------------|---------------------|-----------------------------|------------------------|-------------|-------------|------|------|------|------|------------------|------|-------|-------|------|-------|-------|----------|------|------|------|------|------|------|----------|------|------|------|------|------|------|
| Category Temperature Range | - 25 to +105°C | | | | | | | | | | | | | | | | | | | | | | | | | | | | | | | |
| Rated Voltage Range | 160 to 450VDC | | | | | | | | | | | | | | | | | | | | | | | | | | | | | | | |
| Capacitance Range | 39 to 3,300 μ F | | | | | | | | | | | | | | | | | | | | | | | | | | | | | | | |
| Capacitance Tolerance | $\pm 20\%$ (M) at +20°C, 120Hz | | | | | | | | | | | | | | | | | | | | | | | | | | | | | | | |
| Leakage Current | $I \leq 3\sqrt{CV}$ (μ A) after 5 minutes at +20°C. Where I = Max. leakage current (μ A), C = Nominal capacitance (μ F) and V = Rated voltage (V) | | | | | | | | | | | | | | | | | | | | | | | | | | | | | | | |
| Dissipation Factor (Tan δ) | At +20°C, 120Hz <table border="1" style="margin-left: 20px;"> <tr> <td>Rated Voltage (V)</td> <td>160-400</td> <td>420-450</td> </tr> <tr> <td>Tan δ (DF) Max.</td> <td>0.15</td> <td>0.20</td> </tr> </table> | Rated Voltage (V) | 160-400 | 420-450 | Tan δ (DF) Max. | 0.15 | 0.20 | | | | | | | | | | | | | | | | | | | | | | | | | |
| Rated Voltage (V) | 160-400 | 420-450 | | | | | | | | | | | | | | | | | | | | | | | | | | | | | | |
| Tan δ (DF) Max. | 0.15 | 0.20 | | | | | | | | | | | | | | | | | | | | | | | | | | | | | | |
| Low Temperature Characteristics | At 120Hz, impedance (Z) ratio between the - 25°C value and +20°C value shall not exceed the values given below. <table border="1" style="margin-left: 20px;"> <tr> <td>Rated Voltage (V)</td> <td>160-400</td> <td>420-450</td> </tr> <tr> <td>Z (-25°C) / Z (+20°C)</td> <td>4</td> <td>8</td> </tr> </table> | Rated Voltage (V) | 160-400 | 420-450 | Z (-25°C) / Z (+20°C) | 4 | 8 | | | | | | | | | | | | | | | | | | | | | | | | | |
| Rated Voltage (V) | 160-400 | 420-450 | | | | | | | | | | | | | | | | | | | | | | | | | | | | | | |
| Z (-25°C) / Z (+20°C) | 4 | 8 | | | | | | | | | | | | | | | | | | | | | | | | | | | | | | |
| Rated Ripple Current Multipliers | Ambient Temperature (°C) <table border="1" style="margin-left: 20px;"> <tr> <td>+45°C</td> <td>+60°C</td> <td>+70°C</td> <td>+85°C</td> <td>+105°C</td> </tr> <tr> <td>2.64</td> <td>2.23</td> <td>2.12</td> <td>1.73</td> <td>1.00</td> </tr> </table> Frequency (Hz) <table border="1" style="margin-left: 20px;"> <tr> <td>DC Rated Voltage</td> <td>50Hz</td> <td>120Hz</td> <td>300Hz</td> <td>1kHz</td> <td>10kHz</td> <td>50kHz</td> </tr> <tr> <td>160-250V</td> <td>0.81</td> <td>1.00</td> <td>1.17</td> <td>1.32</td> <td>1.45</td> <td>1.50</td> </tr> <tr> <td>315-450V</td> <td>0.77</td> <td>1.00</td> <td>1.16</td> <td>1.30</td> <td>1.41</td> <td>1.43</td> </tr> </table> | +45°C | +60°C | +70°C | +85°C | +105°C | 2.64 | 2.23 | 2.12 | 1.73 | 1.00 | DC Rated Voltage | 50Hz | 120Hz | 300Hz | 1kHz | 10kHz | 50kHz | 160-250V | 0.81 | 1.00 | 1.17 | 1.32 | 1.45 | 1.50 | 315-450V | 0.77 | 1.00 | 1.16 | 1.30 | 1.41 | 1.43 |
| +45°C | +60°C | +70°C | +85°C | +105°C | | | | | | | | | | | | | | | | | | | | | | | | | | | | |
| 2.64 | 2.23 | 2.12 | 1.73 | 1.00 | | | | | | | | | | | | | | | | | | | | | | | | | | | | |
| DC Rated Voltage | 50Hz | 120Hz | 300Hz | 1kHz | 10kHz | 50kHz | | | | | | | | | | | | | | | | | | | | | | | | | | |
| 160-250V | 0.81 | 1.00 | 1.17 | 1.32 | 1.45 | 1.50 | | | | | | | | | | | | | | | | | | | | | | | | | | |
| 315-450V | 0.77 | 1.00 | 1.16 | 1.30 | 1.41 | 1.43 | | | | | | | | | | | | | | | | | | | | | | | | | | |
| Endurance (Load Life) | The following specifications shall be satisfied when the capacitors are restored to +20°C after subjecting them to DC voltage for the specified test time at +105°C with the rated ripple current applied. The sum of the DC voltage and peak AC voltage must not exceed the full rated voltage of the capacitors. <table border="1" style="margin-left: 20px;"> <tr> <td>Case Diameter</td> <td>$\varnothing 20$mm</td> <td>$\varnothing 22$mm & Above</td> </tr> <tr> <td>Test Time</td> <td>2,000 Hours</td> <td>3,000 Hours</td> </tr> </table> Capacitance change: $\leq \pm 20\%$ of initial measured value Tan δ (DF) : $\leq 200\%$ of initial specified value Leakage current : \leq initial specified value | Case Diameter | $\varnothing 20$ mm | $\varnothing 22$ mm & Above | Test Time | 2,000 Hours | 3,000 Hours | | | | | | | | | | | | | | | | | | | | | | | | | |
| Case Diameter | $\varnothing 20$ mm | $\varnothing 22$ mm & Above | | | | | | | | | | | | | | | | | | | | | | | | | | | | | | |
| Test Time | 2,000 Hours | 3,000 Hours | | | | | | | | | | | | | | | | | | | | | | | | | | | | | | |
| Shelf Life | The following specifications shall be satisfied when the capacitors are restored to +20°C after exposing them for 1,000 hours at +105°C without voltage applied. The rated voltage shall be applied to the capacitors for a minimum of 30 minutes, at least 24 hours and not more than 48 hours before the measurements. Capacitance change: $\leq \pm 15\%$ of initial measured value Tan δ (DF) : $\leq 150\%$ of initial specified value Leakage current : \leq initial specified value | | | | | | | | | | | | | | | | | | | | | | | | | | | | | | | |

Diagram of Dimensions - Snap Mount

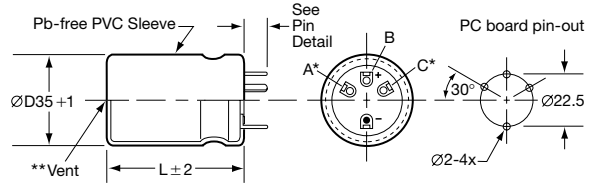
Snap Mount

Unit: mm

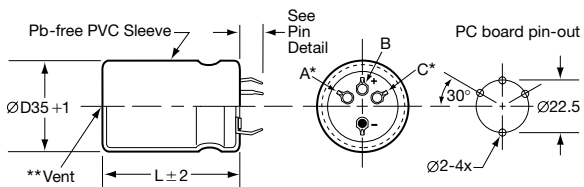
Types VSN $\varnothing 20\text{--}\varnothing 35$; VNN $\varnothing 22\text{--}\varnothing 35$



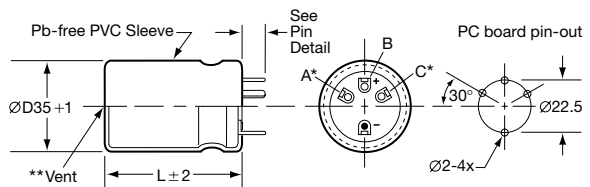
Type VRD $\varnothing 35$



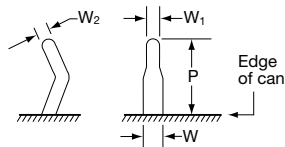
Type VND $\varnothing 35$



Type VQD $\varnothing 35$



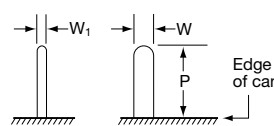
VS & VN Pin Dimensions



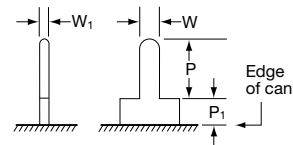
| Type | P | W | W ₁ | W ₂ |
|---|---------------|---------------|----------------|----------------|
| VSN $\varnothing 20\text{--}\varnothing 30$ | 4.0 ± 0.5 | 1.5 ± 0.2 | 1.0 | 1.0 |
| VSN $\varnothing 35$ | 3.5 ± 0.5 | | | |
| VNN $\varnothing 22\text{--}\varnothing 35$ | 5.8 ± 1.0 | | | |
| VND $\varnothing 35$ | 5.8 ± 1.0 | | | |

VR & VQ Pin Dimensions

VR Straight Pin



VQ Standoff Pin



| Type | P | P ₁ | W | W ₁ |
|-------------------|----------------|----------------|---------------|----------------|
| Straight Pin (VR) | 5.50 ± 1.0 | — | 1.5 ± 0.1 | 0.7 |
| Standoff Pin (VQ) | 3.75 ± 1.0 | 2.0 max. | | |

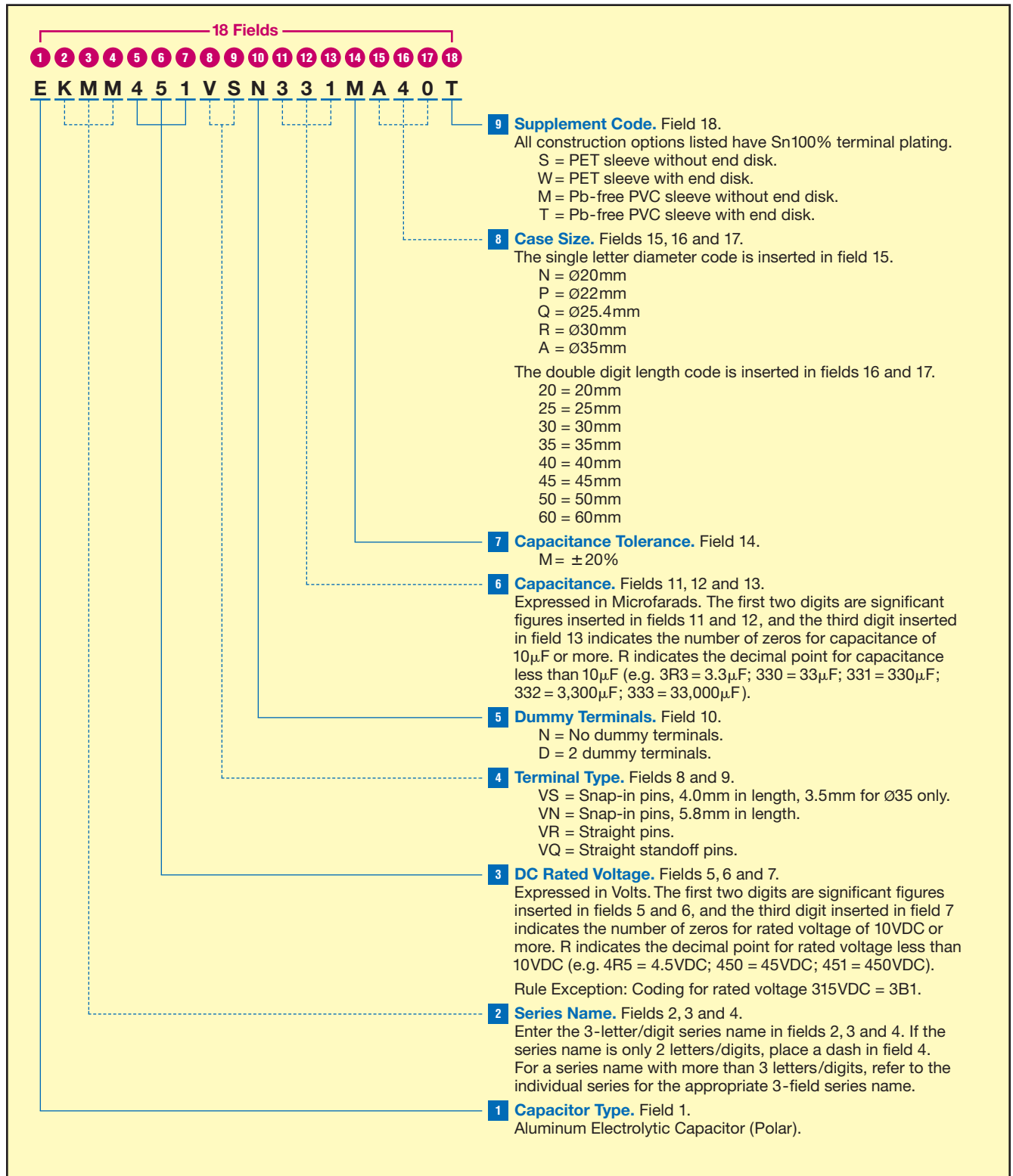
CAUTION:

*Use the blank terminals for mechanical support only. The blank terminals must not be connected to a solder trace on the PC board, but be electrically isolated from the negative or positive terminal.

**Vent may be located either on the bottom or side of the can.

Part Numbering System for KMM Series

When ordering, always specify complete 18-field global part number.



Standard Voltage Ratings - Snap Mount

| Rated Voltage (WVDC) | Capacitance (µF) | Global Part Number† | Nominal Case Size* D × L (mm) | Case Size Code | Maximum ESR (Ω) at +20°C, 120Hz | Rated Ripple Current (A rms) at +105°C, 120Hz |
|----------------------|------------------|---------------------|-------------------------------|----------------|---------------------------------|---|
|----------------------|------------------|---------------------|-------------------------------|----------------|---------------------------------|---|

| | | | | | | |
|--------------------------------------|--------------------|--------------------|-----------|-------|-------|------|
| 160 Volts 200 Volts Surge | 180 | EKMM161VSN181MN20T | 20 × 20 | N20 | 1.381 | 0.68 |
| | 220 | EKMM161VSN221MN25T | 20 × 25 | N25 | 1.13 | 0.85 |
| | 270 | EKMM161VSN271MN25T | 20 × 25 | N25 | 0.921 | 1.1 |
| | 330 | EKMM161VSN331MN30T | 20 × 30 | N30 | 0.753 | 1.2 |
| | 390 | EKMM161VSN391MN30T | 20 × 30 | N30 | 0.638 | 1.3 |
| | 470 | EKMM161VSN471MN35T | 20 × 35 | N35 | 0.529 | 1.34 |
| | 560 | EKMM161VSN561MN40T | 20 × 40 | N40 | 0.444 | 1.5 |
| | 680 | EKMM161VSN681MN45T | 20 × 45 | N45 | 0.366 | 1.7 |
| | 220 | EKMM161VSN221MP20T | 22 × 20 | P20 | 1.13 | 0.81 |
| | 330 | EKMM161VSN331MP25T | 22 × 25 | P25 | 0.753 | 1.2 |
| | 390 | EKMM161VSN391MP30T | 22 × 30 | P30 | 0.638 | 1.3 |
| | 470 | EKMM161VSN471MP30T | 22 × 30 | P30 | 0.529 | 1.55 |
| | 560 | EKMM161VSN561MP35T | 22 × 35 | P35 | 0.444 | 1.67 |
| | 680 | EKMM161VSN681MP40T | 22 × 40 | P40 | 0.366 | 1.82 |
| | 820 | EKMM161VSN821MP45T | 22 × 45 | P45 | 0.303 | 2.04 |
| | 1,000 | EKMM161VSN102MP50T | 22 × 50 | P50 | 0.249 | 2.25 |
| | 270 | EKMM161VSN271MQ20T | 25.4 × 20 | Q20 | 0.921 | 0.98 |
| | 330 | EKMM161VSN331MQ20T | 25.4 × 20 | Q20 | 0.753 | 1.02 |
| | 390 | EKMM161VSN391MQ25T | 25.4 × 25 | Q25 | 0.638 | 1.26 |
| | 470 | EKMM161VSN471MQ25T | 25.4 × 25 | Q25 | 0.529 | 1.55 |
| | 560 | EKMM161VSN561MQ30T | 25.4 × 30 | Q30 | 0.444 | 1.67 |
| | 680 | EKMM161VSN681MQ30T | 25.4 × 30 | Q30 | 0.366 | 1.82 |
| | 820 | EKMM161VSN821MQ35T | 25.4 × 35 | Q35 | 0.303 | 2.04 |
| | 1,000 | EKMM161VSN102MQ40T | 25.4 × 40 | Q40 | 0.249 | 2.25 |
| | 1,200 | EKMM161VSN122MQ45T | 25.4 × 45 | Q45 | 0.207 | 2.49 |
| | 1,500 | EKMM161VSN152MQ60T | 25.4 × 60 | Q60 | 0.166 | 2.97 |
| | 390 | EKMM161VSN391MR20T | 30 × 20 | R20 | 0.638 | 1.25 |
| | 470 | EKMM161VSN471MR20T | 30 × 20 | R20 | 0.529 | 1.3 |
| | 560 | EKMM161VSN561MR25T | 30 × 25 | R25 | 0.444 | 1.67 |
| | 680 | EKMM161VSN681MR25T | 30 × 25 | R25 | 0.366 | 1.82 |
| | 820 | EKMM161VSN821MR30T | 30 × 30 | R30 | 0.303 | 2.04 |
| | 1,000 | EKMM161VSN102MR30T | 30 × 30 | R30 | 0.249 | 2.25 |
| | 1,200 | EKMM161VSN122MR35T | 30 × 35 | R35 | 0.207 | 2.49 |
| | 1,500 | EKMM161VSN152MR40T | 30 × 40 | R40 | 0.166 | 2.84 |
| | 1,800 | EKMM161VSN182MR45T | 30 × 45 | R45 | 0.138 | 3.32 |
| | 2,200 | EKMM161VSN222MR60T | 30 × 60 | R60 | 0.113 | 3.86 |
| | 560 | EKMM161VSN561MA20T | 35 × 20 | A20 | 0.444 | 1.46 |
| | 680 | EKMM161VSN681MA20T | 35 × 20 | A20 | 0.366 | 1.51 |
| | 820 | EKMM161VSN821MA25T | 35 × 25 | A25 | 0.303 | 2.04 |
| | 1,000 | EKMM161VSN102MA25T | 35 × 25 | A25 | 0.249 | 2.25 |
| 1,200 | EKMM161VSN122MA30T | 35 × 30 | A30 | 0.207 | 2.49 | |
| 1,500 | EKMM161VSN152MA35T | 35 × 35 | A35 | 0.166 | 2.84 | |
| 1,800 | EKMM161VSN182MA35T | 35 × 35 | A35 | 0.138 | 3.0 | |
| 2,200 | EKMM161VSN222MA45T | 35 × 45 | A45 | 0.113 | 3.5 | |
| 2,700 | EKMM161VSN272MA50T | 35 × 50 | A50 | 0.092 | 4.0 | |
| 3,300 | EKMM161VSN332MA60T | 35 × 60 | A60 | 0.075 | 4.63 | |

| | | | | | | |
|--------------------------------------|-----|--------------------|---------|-----|-------|------|
| 180 Volts 225 Volts Surge | 150 | EKMM181VSN151MP20T | 20 × 20 | N20 | 1.658 | 0.62 |
| | 180 | EKMM181VSN181MN25T | 20 × 25 | N25 | 1.381 | 0.77 |
| | 220 | EKMM181VSN221MN25T | 20 × 25 | N25 | 1.13 | 1.0 |
| | 270 | EKMM181VSN271MN30T | 20 × 30 | N30 | 0.921 | 1.1 |
| | 330 | EKMM181VSN331MN30T | 20 × 30 | N30 | 0.753 | 1.2 |
| | 390 | EKMM181VSN391MN35T | 20 × 35 | N35 | 0.638 | 1.3 |
| | 470 | EKMM181VSN471MN40T | 20 × 40 | N40 | 0.529 | 1.4 |
| | 560 | EKMM181VSN561MN45T | 20 × 45 | N45 | 0.444 | 1.55 |
| | 680 | EKMM181VSN681MN50T | 20 × 50 | N50 | 0.366 | 1.75 |
| | 180 | EKMM181VSN181MP20T | 22 × 20 | P20 | 1.381 | 0.8 |
| | 270 | EKMM181VSN271MP25T | 22 × 25 | P25 | 0.921 | 1.0 |
| | 330 | EKMM181VSN331MP30T | 22 × 30 | P30 | 0.753 | 1.2 |

† For terminal and construction options, refer to the part numbering system for descriptions and codes.

* Refer to diagram of dimensions for detailed case size specifications.

Standard Voltage Ratings - Snap Mount

| Rated Voltage (WVDC) | Capacitance (µF) | Global Part Number† | Nominal Case Size* D × L (mm) | Case Size Code | Maximum ESR (Ω) at +20°C, 120Hz | Rated Ripple Current (A rms) at +105°C, 120Hz |
|----------------------|------------------|---------------------|-------------------------------|----------------|---------------------------------|---|
|----------------------|------------------|---------------------|-------------------------------|----------------|---------------------------------|---|

| | | | | | | |
|--------------------------------------|--------------------|--------------------|-----------|-------|-------|------|
| 180 Volts 225 Volts Surge | 390 | EKMM181VSN391MP30T | 22 × 30 | P30 | 0.638 | 1.35 |
| | 470 | EKMM181VSN471MP35T | 22 × 35 | P35 | 0.529 | 1.5 |
| | 560 | EKMM181VSN561MP40T | 22 × 40 | P40 | 0.444 | 1.67 |
| | 680 | EKMM181VSN681MP45T | 22 × 45 | P45 | 0.366 | 1.78 |
| | 820 | EKMM181VSN821MP50T | 22 × 50 | P50 | 0.303 | 2.04 |
| | 220 | EKMM181VSN221MQ20T | 25.4 × 20 | Q20 | 1.13 | 0.9 |
| | 270 | EKMM181VSN271MQ20T | 25.4 × 20 | Q20 | 0.921 | 0.95 |
| | 330 | EKMM181VSN331MQ25T | 25.4 × 25 | Q25 | 0.753 | 1.16 |
| | 390 | EKMM181VSN391MQ25T | 25.4 × 25 | Q25 | 0.638 | 1.35 |
| | 470 | EKMM181VSN471MQ30T | 25.4 × 30 | Q30 | 0.529 | 1.5 |
| | 560 | EKMM181VSN561MQ30T | 25.4 × 30 | Q30 | 0.444 | 1.67 |
| | 680 | EKMM181VSN681MQ35T | 25.4 × 35 | Q35 | 0.366 | 1.78 |
| | 820 | EKMM181VSN821MQ40T | 25.4 × 40 | Q40 | 0.303 | 2.04 |
| | 1,000 | EKMM181VSN102MQ45T | 25.4 × 45 | Q45 | 0.249 | 2.3 |
| | 1,200 | EKMM181VSN122MQ50T | 25.4 × 50 | Q50 | 0.207 | 2.55 |
| | 330 | EKMM181VSN331MR20T | 30 × 20 | R20 | 0.753 | 1.15 |
| | 390 | EKMM181VSN391MR20T | 30 × 20 | R20 | 0.638 | 1.2 |
| | 470 | EKMM181VSN471MR25T | 30 × 25 | R25 | 0.529 | 1.5 |
| | 560 | EKMM181VSN561MR25T | 30 × 25 | R25 | 0.444 | 1.67 |
| | 680 | EKMM181VSN681MR30T | 30 × 30 | R30 | 0.366 | 1.78 |
| | 820 | EKMM181VSN821MR30T | 30 × 30 | R30 | 0.303 | 2.04 |
| | 1,000 | EKMM181VSN102MR35T | 30 × 35 | R35 | 0.249 | 2.3 |
| | 1,200 | EKMM181VSN122MR40T | 30 × 40 | R40 | 0.207 | 2.55 |
| | 1,500 | EKMM181VSN152MR45T | 30 × 45 | R45 | 0.166 | 2.9 |
| | 1,800 | EKMM181VSN182MR60T | 30 × 60 | R60 | 0.138 | 3.49 |
| | 470 | EKMM181VSN471MA20T | 35 × 20 | A20 | 0.529 | 1.36 |
| | 560 | EKMM181VSN561MA20T | 35 × 20 | A20 | 0.444 | 1.43 |
| | 680 | EKMM181VSN681MA25T | 35 × 25 | A25 | 0.366 | 1.83 |
| | 820 | EKMM181VSN821MA25T | 35 × 25 | A25 | 0.303 | 2.04 |
| | 1,000 | EKMM181VSN102MA30T | 35 × 30 | A30 | 0.249 | 2.3 |
| | 1,200 | EKMM181VSN122MA30T | 35 × 30 | A30 | 0.207 | 2.55 |
| | 1,500 | EKMM181VSN152MA35T | 35 × 35 | A35 | 0.166 | 2.9 |
| 1,800 | EKMM181VSN182MA40T | 35 × 40 | A40 | 0.138 | 3.3 | |
| 2,200 | EKMM181VSN222MA50T | 35 × 50 | A50 | 0.113 | 3.65 | |
| 2,700 | EKMM181VSN272MA60T | 35 × 60 | A60 | 0.092 | 4.19 | |

| | | | | | | |
|--------------------------------------|-----|--------------------|-----------|-----|-------|------|
| 200 Volts 250 Volts Surge | 120 | EKMM201VSN121MN20T | 20 × 20 | N20 | 2.072 | 0.56 |
| | 150 | EKMM201VSN151MN25T | 20 × 25 | N25 | 1.658 | 0.71 |
| | 180 | EKMM201VSN181MN25T | 20 × 25 | N25 | 1.381 | 0.77 |
| | 220 | EKMM201VSN221MN25T | 20 × 25 | N25 | 1.13 | 1.0 |
| | 270 | EKMM201VSN271MN30T | 20 × 30 | N30 | 0.921 | 1.1 |
| | 330 | EKMM201VSN331MN35T | 20 × 35 | N35 | 0.753 | 1.2 |
| | 390 | EKMM201VSN391MN40T | 20 × 40 | N40 | 0.638 | 1.31 |
| | 470 | EKMM201VSN471MN45T | 20 × 45 | N45 | 0.529 | 1.45 |
| | 560 | EKMM201VSN561MN50T | 20 × 50 | N50 | 0.444 | 1.58 |
| | 150 | EKMM201VSN151MP20T | 22 × 20 | P20 | 1.658 | 0.73 |
| | 180 | EKMM201VSN181MP20T | 22 × 20 | P20 | 1.381 | 0.8 |
| | 270 | EKMM201VSN271MP25T | 22 × 25 | P25 | 0.921 | 1.1 |
| | 330 | EKMM201VSN331MP30T | 22 × 30 | P30 | 0.753 | 1.25 |
| | 390 | EKMM201VSN391MP30T | 22 × 30 | P30 | 0.638 | 1.35 |
| | 470 | EKMM201VSN471MP35T | 22 × 35 | P35 | 0.529 | 1.5 |
| | 560 | EKMM201VSN561MP40T | 22 × 40 | P40 | 0.444 | 1.67 |
| | 680 | EKMM201VSN681MP45T | 22 × 45 | P45 | 0.366 | 1.78 |
| | 220 | EKMM201VSN221MQ20T | 25.4 × 20 | Q20 | 1.13 | 0.85 |
| | 330 | EKMM201VSN331MQ25T | 25.4 × 25 | Q25 | 0.753 | 1.25 |
| | 390 | EKMM201VSN391MQ25T | 25.4 × 25 | Q25 | 0.638 | 1.35 |
| | 470 | EKMM201VSN471MQ30T | 25.4 × 30 | Q30 | 0.529 | 1.5 |
| | 560 | EKMM201VSN561MQ35T | 25.4 × 35 | Q35 | 0.444 | 1.67 |
| | 680 | EKMM201VSN681MQ40T | 25.4 × 40 | Q40 | 0.366 | 1.78 |

† For terminal and construction options, refer to the part numbering system for descriptions and codes.

* Refer to diagram of dimensions for detailed case size specifications.

Standard Voltage Ratings - Snap Mount

| Rated Voltage (WVDC) | Capacitance (µF) | Global Part Number† | Nominal Case Size* D × L (mm) | Case Size Code | Maximum ESR (Ω) at +20°C, 120Hz | Rated Ripple Current (A rms) at +105°C, 120Hz |
|----------------------|------------------|---------------------|-------------------------------|----------------|---------------------------------|---|
|----------------------|------------------|---------------------|-------------------------------|----------------|---------------------------------|---|

| | | | | | | |
|-------------------------------------|--------------------|--------------------|-----------|-------|-------|------|
| 200 Volts 250 Volts Surge | 820 | EKMM201VSN821MQ45T | 25.4 × 45 | Q45 | 0.303 | 2.04 |
| | 1,000 | EKMM201VSN102MQ50T | 25.4 × 50 | Q50 | 0.249 | 2.3 |
| | 1,200 | EKMM201VSN122MQ60T | 25.4 × 60 | Q60 | 0.207 | 2.66 |
| | 270 | EKMM201VSN271MR20T | 30 × 20 | R20 | 0.921 | 1.05 |
| | 330 | EKMM201VSN331MR20T | 30 × 20 | R20 | 0.753 | 1.1 |
| | 470 | EKMM201VSN471MR25T | 30 × 25 | R25 | 0.529 | 1.5 |
| | 560 | EKMM201VSN561MR25T | 30 × 25 | R25 | 0.444 | 1.67 |
| | 680 | EKMM201VSN681MR30T | 30 × 30 | R30 | 0.366 | 1.78 |
| | 820 | EKMM201VSN821MR35T | 30 × 35 | R35 | 0.303 | 2.04 |
| | 1,000 | EKMM201VSN102MR40T | 30 × 40 | R40 | 0.249 | 2.3 |
| | 1,200 | EKMM201VSN122MR45T | 30 × 45 | R45 | 0.207 | 2.65 |
| | 1,500 | EKMM201VSN152MR50T | 30 × 50 | R50 | 0.166 | 3.08 |
| | 1,800 | EKMM201VSN182MR60T | 30 × 60 | R60 | 0.138 | 3.49 |
| | 390 | EKMM201VSN391MA20T | 35 × 20 | A20 | 0.638 | 1.3 |
| | 470 | EKMM201VSN471MA20T | 35 × 20 | A20 | 0.529 | 1.41 |
| | 680 | EKMM201VSN681MA25T | 35 × 25 | A25 | 0.366 | 1.78 |
| | 820 | EKMM201VSN821MA30T | 35 × 30 | A30 | 0.303 | 2.04 |
| | 1,000 | EKMM201VSN102MA30T | 35 × 30 | A30 | 0.249 | 2.3 |
| | 1,200 | EKMM201VSN122MA35T | 35 × 35 | A35 | 0.207 | 2.65 |
| | 1,500 | EKMM201VSN152MA40T | 35 × 40 | A40 | 0.166 | 3.08 |
| 1,800 | EKMM201VSN182MA45T | 35 × 45 | A45 | 0.138 | 3.48 | |
| 2,200 | EKMM201VSN222MA60T | 35 × 60 | A60 | 0.113 | 3.78 | |

| | | | | | | |
|-------------------------------------|-------|--------------------|-----------|-----|-------|------|
| 220 Volts 275 Volts Surge | 120 | EKMM221VSN121MN20T | 20 × 20 | N20 | 2.072 | 0.56 |
| | 150 | EKMM221VSN151MN25T | 20 × 25 | N25 | 1.658 | 0.73 |
| | 180 | EKMM221VSN181MN25T | 20 × 25 | N25 | 1.381 | 0.9 |
| | 220 | EKMM221VSN221MN30T | 20 × 30 | N30 | 1.13 | 1.0 |
| | 270 | EKMM221VSN271MN35T | 20 × 35 | N35 | 0.921 | 1.15 |
| | 330 | EKMM221VSN331MN40T | 20 × 40 | N40 | 0.753 | 1.25 |
| | 390 | EKMM221VSN391MN45T | 20 × 45 | N45 | 0.638 | 1.4 |
| | 470 | EKMM221VSN471MN50T | 20 × 50 | N50 | 0.529 | 1.51 |
| | 150 | EKMM221VSN151MP20T | 22 × 20 | P20 | 1.658 | 0.67 |
| | 220 | EKMM221VSN221MP25T | 22 × 25 | P25 | 1.13 | 1.0 |
| | 270 | EKMM221VSN271MP30T | 22 × 30 | P30 | 0.921 | 1.15 |
| | 330 | EKMM221VSN331MP35T | 22 × 35 | P35 | 0.753 | 1.25 |
| | 390 | EKMM221VSN391MP35T | 22 × 35 | P35 | 0.638 | 1.4 |
| | 470 | EKMM221VSN471MP40T | 22 × 40 | P40 | 0.529 | 1.51 |
| | 560 | EKMM221VSN561MP45T | 22 × 45 | P45 | 0.444 | 1.7 |
| | 180 | EKMM221VSN181MQ20T | 25.4 × 20 | Q20 | 1.381 | 0.76 |
| | 220 | EKMM221VSN221MQ20T | 25.4 × 20 | Q20 | 1.13 | 0.84 |
| | 270 | EKMM221VSN271MQ25T | 25.4 × 25 | Q25 | 0.921 | 1.08 |
| | 330 | EKMM221VSN331MQ25T | 25.4 × 25 | Q25 | 0.753 | 1.25 |
| | 390 | EKMM221VSN391MQ30T | 25.4 × 30 | Q30 | 0.638 | 1.4 |
| | 470 | EKMM221VSN471MQ35T | 25.4 × 35 | Q35 | 0.529 | 1.54 |
| | 560 | EKMM221VSN561MQ40T | 25.4 × 40 | Q40 | 0.444 | 1.72 |
| | 680 | EKMM221VSN681MQ45T | 25.4 × 45 | Q45 | 0.366 | 1.94 |
| | 820 | EKMM221VSN821MQ50T | 25.4 × 50 | Q50 | 0.303 | 2.18 |
| | 1,000 | EKMM221VSN102MQ60T | 25.4 × 60 | Q60 | 0.249 | 2.54 |
| | 270 | EKMM221VSN271MR20T | 30 × 20 | R20 | 0.921 | 0.98 |
| | 390 | EKMM221VSN391MR25T | 30 × 25 | R25 | 0.638 | 1.36 |
| | 470 | EKMM221VSN471MR25T | 30 × 25 | R25 | 0.529 | 1.5 |
| | 560 | EKMM221VSN561MR30T | 30 × 30 | R30 | 0.444 | 1.7 |
| | 680 | EKMM221VSN681MR35T | 30 × 35 | R35 | 0.366 | 1.93 |
| | 820 | EKMM221VSN821MR40T | 30 × 40 | R40 | 0.303 | 2.19 |
| | 1,000 | EKMM221VSN102MR45T | 30 × 45 | R45 | 0.249 | 2.5 |
| | 1,200 | EKMM221VSN122MR50T | 30 × 50 | R50 | 0.207 | 2.81 |
| | 1,500 | EKMM221VSN152MR60T | 30 × 60 | R60 | 0.166 | 3.3 |
| | 330 | EKMM221VSN331MA20T | 35 × 20 | A20 | 0.753 | 1.13 |
| | 390 | EKMM221VSN391MA20T | 35 × 20 | A20 | 0.638 | 1.23 |

† For terminal and construction options, refer to the part numbering system for descriptions and codes.

* Refer to diagram of dimensions for detailed case size specifications.

Standard Voltage Ratings - Snap Mount

| Rated Voltage (WVDC) | Capacitance (µF) | Global Part Number† | Nominal Case Size* D × L (mm) | Case Size Code | Maximum ESR (Ω) at +20°C, 120Hz | Rated Ripple Current (A rms) at +105°C, 120Hz |
|----------------------|------------------|---------------------|-------------------------------|----------------|---------------------------------|---|
|----------------------|------------------|---------------------|-------------------------------|----------------|---------------------------------|---|

| | | | | | | |
|-------------------------------------|-------|--------------------|---------|-----|-------|------|
| 220 Volts 275 Volts Surge | 560 | EKMM221VSN561MA25T | 35 × 25 | A25 | 0.444 | 1.71 |
| | 680 | EKMM221VSN681MA25T | 35 × 25 | A25 | 0.366 | 1.89 |
| | 820 | EKMM221VSN821MA30T | 35 × 30 | A30 | 0.303 | 2.16 |
| | 1,000 | EKMM221VSN102MA35T | 35 × 35 | A35 | 0.249 | 2.44 |
| | 1,200 | EKMM221VSN122MA40T | 35 × 40 | A40 | 0.207 | 2.79 |
| | 1,500 | EKMM221VSN152MA45T | 35 × 45 | A45 | 0.166 | 3.22 |
| | 1,800 | EKMM221VSN182MA50T | 35 × 50 | A50 | 0.138 | 3.63 |
| | 2,200 | EKMM221VSN222MA60T | 35 × 60 | A60 | 0.113 | 4.23 |

| | | | | | | |
|-------------------------------------|--------------------|--------------------|-----------|-------|-------|------|
| 250 Volts 300 Volts Surge | 100 | EKMM251VSN101MN20T | 20 × 20 | N20 | 2.486 | 0.51 |
| | 120 | EKMM251VSN121MN25T | 20 × 25 | N25 | 2.072 | 0.58 |
| | 150 | EKMM251VSN151MN25T | 20 × 25 | N25 | 1.658 | 0.79 |
| | 180 | EKMM251VSN181MN30T | 20 × 30 | N30 | 1.381 | 0.9 |
| | 220 | EKMM251VSN221MN30T | 20 × 30 | N30 | 1.13 | 1.0 |
| | 270 | EKMM251VSN271MN35T | 20 × 35 | N35 | 0.921 | 1.1 |
| | 330 | EKMM251VSN331MN40T | 20 × 40 | N40 | 0.753 | 1.2 |
| | 390 | EKMM251VSN391MN50T | 20 × 50 | N50 | 0.638 | 1.45 |
| | 120 | EKMM251VSN121MP20T | 22 × 20 | P20 | 2.072 | 0.6 |
| | 180 | EKMM251VSN181MP25T | 22 × 25 | P25 | 1.381 | 0.78 |
| | 220 | EKMM251VSN221MP30T | 22 × 30 | P30 | 1.13 | 1.0 |
| | 270 | EKMM251VSN271MP30T | 22 × 30 | P30 | 0.921 | 1.18 |
| | 330 | EKMM251VSN331MP35T | 22 × 35 | P35 | 0.753 | 1.3 |
| | 390 | EKMM251VSN391MP40T | 22 × 40 | P40 | 0.638 | 1.49 |
| | 470 | EKMM251VSN471MP45T | 22 × 45 | P45 | 0.529 | 1.65 |
| | 560 | EKMM251VSN561MP50T | 22 × 50 | P50 | 0.444 | 1.67 |
| | 150 | EKMM251VSN151MQ20T | 25.4 × 20 | Q20 | 1.658 | 0.74 |
| | 180 | EKMM251VSN181MQ20T | 25.4 × 20 | Q20 | 1.381 | 0.75 |
| | 220 | EKMM251VSN221MQ25T | 25.4 × 25 | Q25 | 1.13 | 0.95 |
| | 270 | EKMM251VSN271MQ25T | 25.4 × 25 | Q25 | 0.921 | 1.18 |
| | 330 | EKMM251VSN331MQ30T | 25.4 × 30 | Q30 | 0.753 | 1.3 |
| | 390 | EKMM251VSN391MQ35T | 25.4 × 35 | Q35 | 0.638 | 1.49 |
| | 470 | EKMM251VSN471MQ35T | 25.4 × 35 | Q35 | 0.529 | 1.65 |
| | 560 | EKMM251VSN561MQ40T | 25.4 × 40 | Q40 | 0.444 | 1.8 |
| | 680 | EKMM251VSN681MQ50T | 25.4 × 50 | Q50 | 0.366 | 2.0 |
| | 820 | EKMM251VSN821MQ60T | 25.4 × 60 | Q60 | 0.303 | 2.2 |
| | 220 | EKMM251VSN221MR20T | 30 × 20 | R20 | 1.13 | 0.95 |
| | 270 | EKMM251VSN271MR20T | 30 × 20 | R20 | 0.921 | 1.0 |
| | 330 | EKMM251VSN331MR25T | 30 × 25 | R25 | 0.753 | 1.3 |
| | 390 | EKMM251VSN391MR25T | 30 × 25 | R25 | 0.638 | 1.49 |
| | 470 | EKMM251VSN471MR30T | 30 × 30 | R30 | 0.529 | 1.65 |
| | 560 | EKMM251VSN561MR30T | 30 × 30 | R30 | 0.444 | 1.8 |
| | 680 | EKMM251VSN681MR35T | 30 × 35 | R35 | 0.366 | 2.0 |
| | 820 | EKMM251VSN821MR40T | 30 × 40 | R40 | 0.303 | 2.3 |
| | 1,000 | EKMM251VSN102MR50T | 30 × 50 | R50 | 0.249 | 2.47 |
| | 1,200 | EKMM251VSN122MR60T | 30 × 60 | R60 | 0.207 | 2.85 |
| | 330 | EKMM251VSN331MA20T | 35 × 20 | A20 | 0.753 | 1.16 |
| | 470 | EKMM251VSN471MA25T | 35 × 25 | A25 | 0.529 | 1.65 |
| | 560 | EKMM251VSN561MA25T | 35 × 25 | A25 | 0.444 | 1.8 |
| | 680 | EKMM251VSN681MA30T | 35 × 30 | A30 | 0.366 | 2.0 |
| 820 | EKMM251VSN821MA35T | 35 × 35 | A35 | 0.303 | 2.3 | |
| 1,000 | EKMM251VSN102MA40T | 35 × 40 | A40 | 0.249 | 2.47 | |
| 1,200 | EKMM251VSN122MA45T | 35 × 45 | A45 | 0.207 | 2.6 | |
| 1,500 | EKMM251VSN152MA50T | 35 × 50 | A50 | 0.166 | 3.0 | |
| 1,800 | EKMM251VSN182MA60T | 35 × 60 | A60 | 0.138 | 3.42 | |

| | | | | | | |
|-------------------------------------|-----|--------------------|---------|-----|-------|------|
| 315 Volts 365 Volts Surge | 56 | EKMM3B1VSN560MN20T | 20 × 20 | N20 | 4.44 | 0.38 |
| | 68 | EKMM3B1VSN680MN25T | 20 × 25 | N25 | 3.656 | 0.47 |
| | 82 | EKMM3B1VSN820MN25T | 20 × 25 | N25 | 3.032 | 0.64 |
| | 100 | EKMM3B1VSN101MN30T | 20 × 30 | N30 | 2.486 | 0.69 |

† For terminal and construction options, refer to the part numbering system for descriptions and codes.

* Refer to diagram of dimensions for detailed case size specifications.

Standard Voltage Ratings - Snap Mount

| Rated Voltage (WVDC) | Capacitance (µF) | Global Part Number† | Nominal Case Size* D × L (mm) | Case Size Code | Maximum ESR (Ω) at +20°C, 120Hz | Rated Ripple Current (A rms) at +105°C, 120Hz |
|----------------------|------------------|---------------------|-------------------------------|----------------|---------------------------------|---|
|----------------------|------------------|---------------------|-------------------------------|----------------|---------------------------------|---|

| | | | | | | |
|--------------------------------------|--------------------|--------------------|-----------|-------|-------|------|
| 315 Volts 365 Volts Surge | 120 | EKMM3B1VSN121MN30T | 20 × 30 | N30 | 2.072 | 0.75 |
| | 150 | EKMM3B1VSN151MN35T | 20 × 35 | N35 | 1.658 | 0.82 |
| | 180 | EKMM3B1VSN181MN40T | 20 × 40 | N40 | 1.381 | 0.9 |
| | 220 | EKMM3B1VSN221MN50T | 20 × 50 | N50 | 1.13 | 1.0 |
| | 68 | EKMM3B1VSN680MP20T | 22 × 20 | P20 | 3.656 | 0.45 |
| | 82 | EKMM3B1VSN820MP20T | 22 × 20 | P20 | 3.032 | 0.47 |
| | 100 | EKMM3B1VSN101MP25T | 22 × 25 | P25 | 2.486 | 0.61 |
| | 120 | EKMM3B1VSN121MP30T | 22 × 30 | P30 | 2.072 | 0.75 |
| | 150 | EKMM3B1VSN151MP35T | 22 × 35 | P35 | 1.658 | 0.82 |
| | 180 | EKMM3B1VSN181MP35T | 22 × 35 | P35 | 1.381 | 0.92 |
| | 220 | EKMM3B1VSN221MP40T | 22 × 40 | P40 | 1.13 | 1.04 |
| | 270 | EKMM3B1VSN271MP45T | 22 × 45 | P45 | 0.921 | 1.16 |
| | 330 | EKMM3B1VSN331MP50T | 22 × 50 | P50 | 0.753 | 1.33 |
| | 100 | EKMM3B1VSN101MQ20T | 25.4 × 20 | Q20 | 2.486 | 0.56 |
| | 120 | EKMM3B1VSN121MQ20T | 25.4 × 20 | Q20 | 2.072 | 0.62 |
| | 150 | EKMM3B1VSN151MQ25T | 25.4 × 25 | Q25 | 1.658 | 0.82 |
| | 180 | EKMM3B1VSN181MQ30T | 25.4 × 30 | Q30 | 1.381 | 0.92 |
| | 220 | EKMM3B1VSN221MQ35T | 25.4 × 35 | Q35 | 1.13 | 1.04 |
| | 270 | EKMM3B1VSN271MQ40T | 25.4 × 40 | Q40 | 0.921 | 1.16 |
| | 330 | EKMM3B1VSN331MQ45T | 25.4 × 45 | Q45 | 0.753 | 1.33 |
| | 390 | EKMM3B1VSN391MQ50T | 25.4 × 50 | Q50 | 0.638 | 1.47 |
| | 470 | EKMM3B1VSN471MQ60T | 25.4 × 60 | Q60 | 0.529 | 1.7 |
| | 120 | EKMM3B1VSN121MR20T | 30 × 20 | R20 | 2.072 | 0.65 |
| | 150 | EKMM3B1VSN151MR20T | 30 × 20 | R20 | 1.658 | 0.7 |
| | 180 | EKMM3B1VSN181MR25T | 30 × 25 | R25 | 1.381 | 0.9 |
| | 220 | EKMM3B1VSN221MR25T | 30 × 25 | R25 | 1.13 | 1.04 |
| | 270 | EKMM3B1VSN271MR25T | 30 × 25 | R25 | 0.921 | 1.16 |
| | 330 | EKMM3B1VSN331MR30T | 30 × 30 | R30 | 0.753 | 1.33 |
| | 390 | EKMM3B1VSN391MR35T | 30 × 35 | R35 | 0.638 | 1.47 |
| | 470 | EKMM3B1VSN471MR40T | 30 × 40 | R40 | 0.529 | 1.7 |
| | 560 | EKMM3B1VSN561MR45T | 30 × 45 | R45 | 0.444 | 2.05 |
| | 680 | EKMM3B1VSN681MR50T | 30 × 50 | R50 | 0.366 | 2.17 |
| | 150 | EKMM3B1VSN151MA20T | 35 × 20 | A20 | 1.658 | 0.76 |
| | 180 | EKMM3B1VSN181MA20T | 35 × 20 | A20 | 1.381 | 0.85 |
| | 220 | EKMM3B1VSN221MA20T | 35 × 20 | A20 | 1.13 | 0.9 |
| | 270 | EKMM3B1VSN271MA25T | 35 × 25 | A25 | 0.921 | 1.15 |
| | 330 | EKMM3B1VSN331MA30T | 35 × 30 | A30 | 0.753 | 1.33 |
| | 390 | EKMM3B1VSN391MA30T | 35 × 30 | A30 | 0.638 | 1.47 |
| | 470 | EKMM3B1VSN471MA35T | 35 × 35 | A35 | 0.529 | 1.7 |
| | 560 | EKMM3B1VSN561MA40T | 35 × 40 | A40 | 0.444 | 2.05 |
| 680 | EKMM3B1VSN681MA45T | 35 × 45 | A45 | 0.366 | 2.17 | |
| 820 | EKMM3B1VSN821MA50T | 35 × 50 | A50 | 0.303 | 2.20 | |
| 1,000 | EKMM3B1VSN102MA60T | 35 × 60 | A60 | 0.249 | 2.55 | |

| | | | | | | |
|--------------------------------------|-----|--------------------|---------|-----|-------|------|
| 350 Volts 400 Volts Surge | 47 | EKMM351VSN470MN20T | 20 × 20 | N20 | 5.29 | 0.35 |
| | 56 | EKMM351VSN560MN25T | 20 × 25 | N25 | 4.44 | 0.43 |
| | 68 | EKMM351VSN680MN25T | 20 × 25 | N25 | 3.656 | 0.47 |
| | 82 | EKMM351VSN820MN30T | 20 × 30 | N30 | 3.032 | 0.54 |
| | 100 | EKMM351VSN101MN30T | 20 × 30 | N30 | 2.486 | 0.6 |
| | 120 | EKMM351VSN121MN35T | 20 × 35 | N35 | 2.072 | 0.68 |
| | 150 | EKMM351VSN151MN40T | 20 × 40 | N40 | 1.658 | 0.78 |
| | 180 | EKMM351VSN181MN45T | 20 × 45 | N45 | 1.381 | 0.87 |
| | 220 | EKMM351VSN221MN50T | 20 × 50 | N50 | 1.13 | 1.0 |
| | 56 | EKMM351VSN560MP20T | 22 × 20 | P20 | 4.44 | 0.41 |
| | 82 | EKMM351VSN820MP25T | 22 × 25 | P25 | 3.032 | 0.55 |
| | 100 | EKMM351VSN101MP25T | 22 × 25 | P25 | 2.486 | 0.69 |
| | 120 | EKMM351VSN121MP30T | 22 × 30 | P30 | 2.072 | 0.75 |
| | 150 | EKMM351VSN151MP35T | 22 × 35 | P35 | 1.658 | 0.82 |
| | 180 | EKMM351VSN181MP40T | 22 × 40 | P40 | 1.381 | 0.92 |

† For terminal and construction options, refer to the part numbering system for descriptions and codes.

* Refer to diagram of dimensions for detailed case size specifications.

Standard Voltage Ratings - Snap Mount

| Rated Voltage (WVDC) | Capacitance (µF) | Global Part Number† | Nominal Case Size* D × L (mm) | Case Size Code | Maximum ESR (Ω) at +20°C, 120Hz | Rated Ripple Current (A rms) at +105°C, 120Hz |
|----------------------|------------------|---------------------|-------------------------------|----------------|---------------------------------|---|
|----------------------|------------------|---------------------|-------------------------------|----------------|---------------------------------|---|

| | | | | | | |
|--------------------------------------|--------------------|--------------------|-----------|-------|-------|------|
| 350 Volts 400 Volts Surge | 220 | EKMM351VSN221MP45T | 22 × 45 | P45 | 1.13 | 1.05 |
| | 270 | EKMM351VSN271MP50T | 22 × 50 | P50 | 0.921 | 1.16 |
| | 68 | EKMM351VSN680MQ20T | 25.4 × 20 | Q20 | 3.656 | 0.46 |
| | 82 | EKMM351VSN820MQ20T | 25.4 × 20 | Q20 | 3.032 | 0.51 |
| | 120 | EKMM351VSN121MQ25T | 25.4 × 25 | Q25 | 2.072 | 0.75 |
| | 150 | EKMM351VSN151MQ30T | 25.4 × 30 | Q30 | 1.658 | 0.83 |
| | 180 | EKMM351VSN181MQ30T | 25.4 × 30 | Q30 | 1.381 | 0.92 |
| | 220 | EKMM351VSN221MQ35T | 25.4 × 35 | Q35 | 1.13 | 1.04 |
| | 270 | EKMM351VSN271MQ40T | 25.4 × 40 | Q40 | 0.921 | 1.18 |
| | 330 | EKMM351VSN331MQ45T | 25.4 × 45 | Q45 | 0.753 | 1.29 |
| | 390 | EKMM351VSN391MQ50T | 25.4 × 50 | Q50 | 0.638 | 1.51 |
| | 470 | EKMM351VSN471MQ60T | 25.4 × 60 | Q60 | 0.529 | 1.66 |
| | 100 | EKMM351VSN101MR20T | 30 × 20 | R20 | 2.486 | 0.6 |
| | 120 | EKMM351VSN121MR20T | 30 × 20 | R20 | 2.072 | 0.65 |
| | 150 | EKMM351VSN151MR25T | 30 × 25 | R25 | 1.658 | 0.82 |
| | 180 | EKMM351VSN181MR25T | 30 × 25 | R25 | 1.381 | 0.9 |
| | 220 | EKMM351VSN221MR30T | 30 × 30 | R30 | 1.13 | 1.02 |
| | 270 | EKMM351VSN271MR30T | 30 × 30 | R30 | 0.921 | 1.17 |
| | 330 | EKMM351VSN331MR35T | 30 × 35 | R35 | 0.753 | 1.34 |
| | 390 | EKMM351VSN391MR40T | 30 × 40 | R40 | 0.638 | 1.51 |
| | 470 | EKMM351VSN471MR45T | 30 × 45 | R45 | 0.529 | 1.65 |
| | 560 | EKMM351VSN561MR50T | 30 × 50 | R50 | 0.444 | 1.85 |
| | 680 | EKMM351VSN681MR60T | 30 × 60 | R60 | 0.366 | 2.15 |
| | 150 | EKMM351VSN151MA20T | 35 × 20 | A20 | 1.658 | 0.76 |
| | 220 | EKMM351VSN221MA25T | 35 × 25 | A25 | 1.13 | 1.04 |
| | 270 | EKMM351VSN271MA25T | 35 × 25 | A25 | 0.921 | 1.2 |
| | 330 | EKMM351VSN331MA30T | 35 × 30 | A30 | 0.753 | 1.22 |
| | 390 | EKMM351VSN391MA35T | 35 × 35 | A35 | 0.638 | 1.47 |
| | 470 | EKMM351VSN471MA35T | 35 × 35 | A35 | 0.529 | 1.69 |
| | 560 | EKMM351VSN561MA40T | 35 × 40 | A40 | 0.444 | 1.9 |
| 680 | EKMM351VSN681MA50T | 35 × 50 | A50 | 0.366 | 1.99 | |
| 820 | EKMM351VSN821MA60T | 35 × 60 | A60 | 0.303 | 2.31 | |

| | | | | | | |
|--------------------------------------|-----|--------------------|-----------|-----|-------|------|
| 400 Volts 450 Volts Surge | 39 | EKMM401VSN390MN20T | 20 × 20 | N20 | 6.375 | 0.32 |
| | 47 | EKMM401VSN470MN25T | 20 × 25 | N25 | 5.29 | 0.39 |
| | 56 | EKMM401VSN560MN25T | 20 × 25 | N25 | 4.44 | 0.51 |
| | 68 | EKMM401VSN680MN30T | 20 × 30 | N30 | 3.656 | 0.56 |
| | 82 | EKMM401VSN820MN30T | 20 × 30 | N30 | 3.032 | 0.64 |
| | 100 | EKMM401VSN101MN35T | 20 × 35 | N35 | 2.486 | 0.7 |
| | 120 | EKMM401VSN121MN40T | 20 × 40 | N40 | 2.072 | 0.75 |
| | 150 | EKMM401VSN151MN45T | 20 × 45 | N45 | 1.658 | 0.83 |
| | 47 | EKMM401VSN470MP20T | 22 × 20 | P20 | 5.29 | 0.37 |
| | 68 | EKMM401VSN680MP25T | 22 × 25 | P25 | 3.656 | 0.5 |
| | 82 | EKMM401VSN820MP25T | 22 × 25 | P25 | 3.032 | 0.64 |
| | 100 | EKMM401VSN101MP30T | 22 × 30 | P30 | 2.486 | 0.7 |
| | 120 | EKMM401VSN121MP35T | 22 × 35 | P35 | 2.072 | 0.75 |
| | 150 | EKMM401VSN151MP40T | 22 × 40 | P40 | 1.658 | 0.88 |
| | 180 | EKMM401VSN181MP45T | 22 × 45 | P45 | 1.381 | 0.98 |
| | 220 | EKMM401VSN221MP50T | 22 × 50 | P50 | 1.13 | 1.1 |
| | 56 | EKMM401VSN560MQ20T | 25.4 × 20 | Q20 | 4.44 | 0.42 |
| | 68 | EKMM401VSN680MQ20T | 25.4 × 20 | Q20 | 3.656 | 0.46 |
| | 100 | EKMM401VSN101MQ25T | 25.4 × 25 | Q25 | 2.486 | 0.7 |
| | 120 | EKMM401VSN121MQ30T | 25.4 × 30 | Q30 | 2.072 | 0.75 |
| | 150 | EKMM401VSN151MQ30T | 25.4 × 30 | Q30 | 1.658 | 0.88 |
| | 180 | EKMM401VSN181MQ35T | 25.4 × 35 | Q35 | 1.381 | 0.98 |
| | 220 | EKMM401VSN221MQ40T | 25.4 × 40 | Q40 | 1.13 | 1.1 |
| | 270 | EKMM401VSN271MQ45T | 25.4 × 45 | Q45 | 0.921 | 1.22 |
| | 330 | EKMM401VSN331MQ50T | 25.4 × 50 | Q50 | 0.753 | 1.44 |
| | 390 | EKMM401VSN391MQ60T | 25.4 × 60 | Q60 | 0.638 | 1.51 |

† For terminal and construction options, refer to the part numbering system for descriptions and codes.

* Refer to diagram of dimensions for detailed case size specifications.

Standard Voltage Ratings - Snap Mount

| Rated Voltage (WVDC) | Capacitance (µF) | Global Part Number† | Nominal Case Size* D × L (mm) | Case Size Code | Maximum ESR (Ω) at +20°C, 120Hz | Rated Ripple Current (A rms) at +105°C, 120Hz |
|----------------------|------------------|---------------------|-------------------------------|----------------|---------------------------------|---|
|----------------------|------------------|---------------------|-------------------------------|----------------|---------------------------------|---|

| | | | | | | |
|--------------------------------------|-----|--------------------|---------|-----|-------|------|
| 400 Volts 450 Volts Surge | 82 | EKMM401VSN820MR20T | 30 × 20 | R20 | 3.032 | 0.55 |
| | 100 | EKMM401VSN101MR20T | 30 × 20 | R20 | 2.486 | 0.6 |
| | 120 | EKMM401VSN121MR25T | 30 × 25 | R25 | 2.072 | 0.73 |
| | 150 | EKMM401VSN151MR25T | 30 × 25 | R25 | 1.658 | 0.82 |
| | 180 | EKMM401VSN181MR30T | 30 × 30 | R30 | 1.381 | 0.98 |
| | 220 | EKMM401VSN221MR30T | 30 × 30 | R30 | 1.13 | 1.1 |
| | 270 | EKMM401VSN271MR35T | 30 × 35 | R35 | 0.921 | 1.22 |
| | 330 | EKMM401VSN331MR40T | 30 × 40 | R40 | 0.753 | 1.44 |
| | 390 | EKMM401VSN391MR45T | 30 × 45 | R45 | 0.638 | 1.6 |
| | 470 | EKMM401VSN471MR50T | 30 × 50 | R50 | 0.529 | 1.9 |
| | 560 | EKMM401VSN561MR60T | 30 × 60 | R60 | 0.444 | 2.1 |
| | 120 | EKMM401VSN121MA20T | 35 × 20 | A20 | 2.072 | 0.75 |
| | 150 | EKMM401VSN151MA20T | 35 × 20 | A20 | 1.658 | 0.8 |
| | 220 | EKMM401VSN221MA25T | 35 × 25 | A25 | 1.13 | 1.1 |
| | 270 | EKMM401VSN271MA30T | 35 × 30 | A30 | 0.921 | 1.22 |
| | 330 | EKMM401VSN331MA35T | 35 × 35 | A35 | 0.753 | 1.44 |
| | 390 | EKMM401VSN391MA35T | 35 × 35 | A35 | 0.638 | 1.6 |
| | 470 | EKMM401VSN471MA40T | 35 × 40 | A40 | 0.529 | 1.9 |
| | 560 | EKMM401VSN561MA45T | 35 × 45 | A45 | 0.444 | 2.12 |
| | 680 | EKMM401VSN681MA60T | 35 × 60 | A60 | 0.366 | 2.27 |

| | | | | | | |
|--------------------------------------|-----|--------------------|-----------|-----|-------|------|
| 420 Volts 470 Volts Surge | 39 | EKMM421VSN390MN20T | 20 × 20 | N20 | 8.5 | 0.32 |
| | 47 | EKMM421VSN470MN25T | 20 × 25 | N25 | 7.053 | 0.39 |
| | 56 | EKMM421VSN560MN25T | 20 × 25 | N25 | 5.92 | 0.51 |
| | 68 | EKMM421VSN680MN30T | 20 × 30 | N30 | 4.875 | 0.56 |
| | 82 | EKMM421VSN820MN35T | 20 × 35 | N35 | 4.043 | 0.64 |
| | 100 | EKMM421VSN101MN35T | 20 × 35 | N35 | 3.315 | 0.7 |
| | 120 | EKMM421VSN121MN40T | 20 × 40 | N40 | 2.763 | 0.75 |
| | 150 | EKMM421VSN151MN50T | 20 × 50 | N50 | 2.21 | 0.88 |
| | 47 | EKMM421VSN470MP20T | 22 × 20 | P20 | 7.053 | 0.37 |
| | 68 | EKMM421VSN680MP25T | 22 × 25 | P25 | 4.875 | 0.5 |
| | 82 | EKMM421VSN820MP25T | 22 × 25 | P25 | 4.043 | 0.64 |
| | 100 | EKMM421VSN101MP30T | 22 × 30 | P30 | 3.315 | 0.7 |
| | 120 | EKMM421VSN121MP35T | 22 × 35 | P35 | 2.763 | 0.75 |
| | 150 | EKMM421VSN151MP40T | 22 × 40 | P40 | 2.21 | 0.88 |
| | 180 | EKMM421VSN181MP45T | 22 × 45 | P45 | 1.842 | 0.95 |
| | 220 | EKMM421VSN221MP50T | 22 × 50 | P50 | 1.507 | 1.1 |
| | 56 | EKMM421VSN560MQ20T | 25.4 × 20 | Q20 | 5.92 | 0.42 |
| | 68 | EKMM421VSN680MQ20T | 25.4 × 20 | Q20 | 4.875 | 0.46 |
| | 82 | EKMM421VSN820MQ25T | 25.4 × 25 | Q25 | 4.043 | 0.58 |
| | 100 | EKMM421VSN101MQ25T | 25.4 × 25 | Q25 | 3.315 | 0.7 |
| | 120 | EKMM421VSN121MQ30T | 25.4 × 30 | Q30 | 2.763 | 0.75 |
| | 150 | EKMM421VSN151MQ35T | 25.4 × 35 | Q35 | 2.21 | 0.88 |
| | 180 | EKMM421VSN181MQ35T | 25.4 × 35 | Q35 | 1.842 | 0.95 |
| | 220 | EKMM421VSN221MQ45T | 25.4 × 45 | Q45 | 1.507 | 1.1 |
| | 270 | EKMM421VSN271MQ50T | 25.4 × 50 | Q50 | 1.228 | 1.22 |
| | 330 | EKMM421VSN331MQ60T | 25.4 × 60 | Q60 | 1.005 | 1.41 |
| | 82 | EKMM421VSN820MR20T | 30 × 20 | R20 | 4.043 | 0.53 |
| | 100 | EKMM421VSN101MR20T | 30 × 20 | R20 | 3.315 | 0.59 |
| | 120 | EKMM421VSN121MR25T | 30 × 25 | R25 | 2.763 | 0.73 |
| | 150 | EKMM421VSN151MR25T | 30 × 25 | R25 | 2.21 | 0.88 |
| | 180 | EKMM421VSN181MR30T | 30 × 30 | R30 | 1.842 | 0.95 |
| | 220 | EKMM421VSN221MR35T | 30 × 35 | R35 | 1.507 | 1.1 |
| | 270 | EKMM421VSN271MR40T | 30 × 40 | R40 | 1.228 | 1.22 |
| | 330 | EKMM421VSN331MR45T | 30 × 45 | R45 | 1.005 | 1.45 |
| | 390 | EKMM421VSN391MR50T | 30 × 50 | R50 | 0.85 | 1.55 |
| | 470 | EKMM421VSN471MR60T | 30 × 60 | R60 | 0.705 | 1.79 |
| | 120 | EKMM421VSN121MA20T | 35 × 20 | A20 | 2.763 | 0.67 |
| | 180 | EKMM421VSN181MA25T | 35 × 25 | A25 | 1.842 | 0.94 |

† For terminal and construction options, refer to the part numbering system for descriptions and codes.

* Refer to diagram of dimensions for detailed case size specifications.

Standard Voltage Ratings - Snap Mount

| Rated Voltage (WVDC) | Capacitance (µF) | Global Part Number† | Nominal Case Size* D × L (mm) | Case Size Code | Maximum ESR (Ω) at +20°C, 120Hz | Rated Ripple Current (A rms) at +105°C, 120Hz |
|--------------------------------------|--------------------|---------------------|-------------------------------|----------------|---------------------------------|---|
| 420 Volts 470 Volts Surge | 220 | EKMM421VSN221MA25T | 35 × 25 | A25 | 1.507 | 1.1 |
| | 270 | EKMM421VSN271MA30T | 35 × 30 | A30 | 1.228 | 1.22 |
| | 330 | EKMM421VSN331MA35T | 35 × 35 | A35 | 1.005 | 1.45 |
| | 390 | EKMM421VSN391MA40T | 35 × 40 | A40 | 0.85 | 1.55 |
| | 470 | EKMM421VSN471MA45T | 35 × 45 | A45 | 0.705 | 1.9 |
| | 560 | EKMM421VSN561MA50T | 35 × 50 | A50 | 0.592 | 2.15 |
| | 680 | EKMM421VSN681MA60T | 35 × 60 | A60 | 0.488 | 2.27 |
| 450 Volts 500 Volts Surge | 39 | EKMM451VSN390MN25T | 20 × 25 | N25 | 8.5 | 0.34 |
| | 47 | EKMM451VSN470MN25T | 20 × 25 | N25 | 7.053 | 0.39 |
| | 56 | EKMM451VSN560MN30T | 20 × 30 | N30 | 5.92 | 0.51 |
| | 68 | EKMM451VSN680MN35T | 20 × 35 | N35 | 4.875 | 0.56 |
| | 82 | EKMM451VSN820MN35T | 20 × 35 | N35 | 4.043 | 0.64 |
| | 100 | EKMM451VSN101MN45T | 20 × 45 | N45 | 3.315 | 0.69 |
| | 120 | EKMM451VSN121MN50T | 20 × 50 | N50 | 2.763 | 0.75 |
| | 56 | EKMM451VSN560MP25T | 22 × 25 | P25 | 5.92 | 0.4 |
| | 68 | EKMM451VSN680MP30T | 22 × 30 | P30 | 4.875 | 0.53 |
| | 82 | EKMM451VSN820MP30T | 22 × 30 | P30 | 4.043 | 0.64 |
| | 100 | EKMM451VSN101MP35T | 22 × 35 | P35 | 3.315 | 0.69 |
| | 120 | EKMM451VSN121MP40T | 22 × 40 | P40 | 2.763 | 0.8 |
| | 150 | EKMM451VSN151MP45T | 22 × 45 | P45 | 2.21 | 0.88 |
| | 68 | EKMM451VSN680MQ25T | 25.4 × 25 | Q25 | 4.875 | 0.5 |
| | 82 | EKMM451VSN820MQ25T | 25.4 × 25 | Q25 | 4.043 | 0.64 |
| | 100 | EKMM451VSN101MQ30T | 25.4 × 30 | Q30 | 3.315 | 0.69 |
| | 120 | EKMM451VSN121MQ30T | 25.4 × 30 | Q30 | 2.763 | 0.8 |
| | 150 | EKMM451VSN151MQ35T | 25.4 × 35 | Q35 | 2.21 | 0.88 |
| | 180 | EKMM451VSN181MQ40T | 25.4 × 40 | Q40 | 1.842 | 1.0 |
| | 220 | EKMM451VSN221MQ45T | 25.4 × 45 | Q45 | 1.507 | 1.12 |
| | 270 | EKMM451VSN271MQ60T | 25.4 × 60 | Q60 | 1.228 | 1.18 |
| | 100 | EKMM451VSN101MR25T | 30 × 25 | R25 | 3.315 | 0.64 |
| | 120 | EKMM451VSN121MR25T | 30 × 25 | R25 | 2.763 | 0.8 |
| | 150 | EKMM451VSN151MR30T | 30 × 30 | R30 | 2.21 | 0.88 |
| | 180 | EKMM451VSN181MR30T | 30 × 30 | R30 | 1.842 | 1.0 |
| | 220 | EKMM451VSN221MR35T | 30 × 35 | R35 | 1.507 | 1.12 |
| | 270 | EKMM451VSN271MR40T | 30 × 40 | R40 | 1.228 | 1.28 |
| | 330 | EKMM451VSN331MR50T | 30 × 50 | R50 | 1.005 | 1.45 |
| | 390 | EKMM451VSN391MR60T | 30 × 60 | R60 | 0.85 | 1.51 |
| | 120 | EKMM451VSN121MA25T | 35 × 25 | A25 | 2.763 | 0.73 |
| | 150 | EKMM451VSN151MA25T | 35 × 25 | A25 | 2.21 | 0.75 |
| | 220 | EKMM451VSN221MA30T | 35 × 30 | A30 | 1.507 | 1.12 |
| | 270 | EKMM451VSN271MA35T | 35 × 35 | A35 | 1.228 | 1.28 |
| 330 | EKMM451VSN331MA40T | 35 × 40 | A40 | 1.005 | 1.45 | |
| 390 | EKMM451VSN391MA40T | 35 × 40 | A40 | 0.85 | 1.55 | |
| 470 | EKMM451VSN471MA50T | 35 × 50 | A50 | 0.705 | 1.85 | |
| 560 | EKMM451VSN561MA60T | 35 × 60 | A60 | 0.592 | 1.91 | |

† For terminal and construction options, refer to the part numbering system for descriptions and codes.

* Refer to diagram of dimensions for detailed case size specifications.