

GENERAL SPECIFICATIONS

Electrical Capacity

Resistive Load: 15A & ½ HP @ 125 or 250V AC for high capacity models
Lamp Load: 5A @ 125V AC

Other Ratings

Contact Resistance: 15 milliohms maximum
Insulation Resistance: 100 megohms minimum @ 500V DC
Dielectric Strength: 1,000V AC minimum between contacts for 1 minute minimum;
 1,500V AC minimum between contacts & case for 1 minute minimum
Mechanical Life: 1,000,000 operations minimum
Electrical Life: 50,000 operations minimum
Travel: Pretravel .047" (1.19mm); Overtravel .040" (1.01mm); Differential .011" (0.27mm)
Operating Temp Range: -40°C through +85°C (-40°F through +185°F)

Materials & Finishes

Caps & Shrouds: Polycarbonate with glossy finish or PBT
Plunger: Polyacetal or brass with nickel plating
Bushing: Steel with zinc plating or glass fiber reinforced polyamide
Case: Polyester
Movable & Stationary Contacts: Silver alloy
Terminals: Brass with silver plating

Standards & Certifications

UL Recognized: Internal snap switch is UL recognized.
CSA Certified: Internal snap switch is CSA certified.

TYPICAL SWITCH ORDERING EXAMPLE

SCB **2** **5** **P** **15** **A** — **4** **CA**

POLES	
1	SPDT
2	DPDT

CIRCUITS		
5	ON	(ON)
6	ON	ON

() = Momentary

BUSHINGS	
P	Plastic (with momentary only)
S	Steel

RATING	
15	15A

TERMINALS	
A	.187" (4.75mm) Quick Connect
B	.250" (6.35mm) Quick Connect

Note: Contact factory for availability of screw lug and solder lug models.





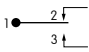
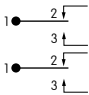
CAPS & SHROUDS	
For Momentary	
1	.315" (8.0mm) Diameter Cap
2	.394" (10.0mm) Diameter Cap
3	.520" (13.2mm) Diameter Cap
For Momentary & Alternate Action	
4	Round Cap and Shroud
5	Rectangular Cap and Shroud

DESCRIPTION FOR TYPICAL ORDERING EXAMPLE
SCB25P15A-4CA

COLORS		
	Caps	Shrouds
A	Black	A
B	White	B
C	Red	-
F	Green	-
G	Blue	-
H	Gray	H

Note: Standard hardware provided with caps. See Bushing detail for more information.

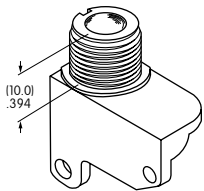
POLES & CIRCUITS

Pole	Model	Plunger Position () = Momentary		Connected Terminals		Throw & Schematics
		Normal 	Down 	Normal 	Down 	
SP	SCB15 SCB16	ON ON	(ON) ON	1-2	1-3	SPDT 
DP	SCB25 SCB26	ON ON	(ON) ON	1-2 1-2	1-3 1-3	SP with 2 switches 

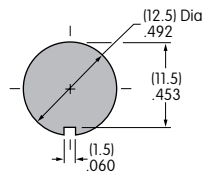
Note: Terminal numbers are actually on the switch.

BUSHINGS

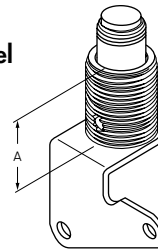
P Plastic
(for Momentary only)



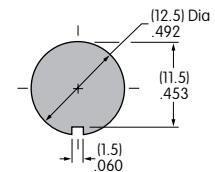
Max. Effective Panel Thickness:
.165" (4.2mm) without Shroud
.157" (4.0mm) with Shroud



S Steel



"A" =
11.2mm
Momentary
15.5mm
Alternate Action



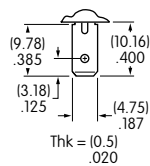
Max. Effective Panel Thickness:
Momentary: .177" (4.5mm) without Shroud
.157" (4.0mm) with Shroud
Alternate Action: .354" (9.0mm)

Standard Hardware Provided with Caps

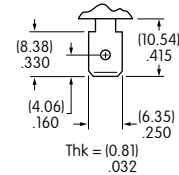
Cap Options 1, 2, & 3: AT504M Knurled Face Nut, AT508 Lockwasher, AT527M Hex Mounting Nut
Cap Options 4 & 5: AT508 Lockwasher & AT527M Hex Mounting Nut

TERMINALS

A .187" (4.75mm)
Quick Connect



B .250" (6.35mm)
Quick Connect

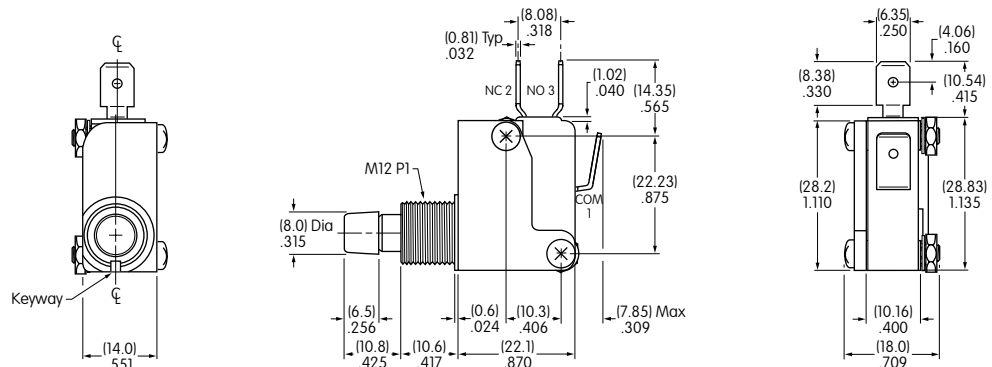


TYPICAL SWITCH DIMENSION

.315" (8.0mm) Dia. Cap • .250" (6.35mm) Quick Connect



SCB15P15B-1C

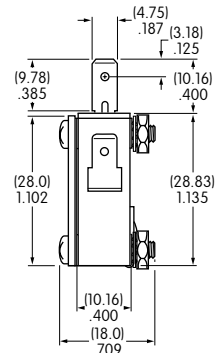
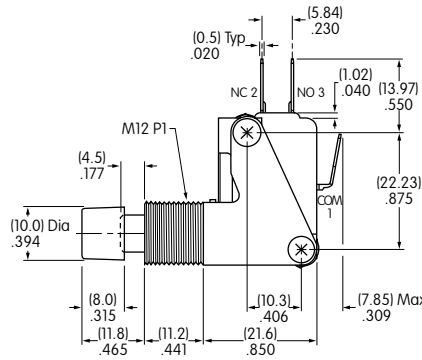
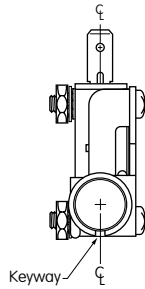


TYPICAL SWITCH DIMENSIONS

.394" (10.0mm) Dia. Cap • .187" (4.75mm) Quick Connect



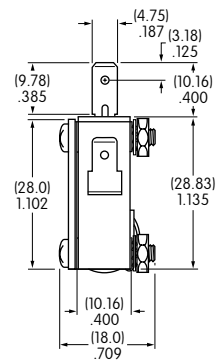
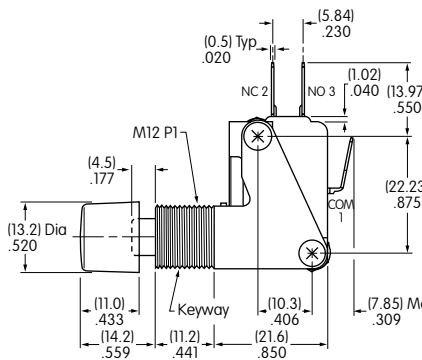
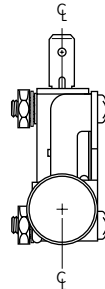
SCB15S15A-2A



.520" (13.2mm) Dia. Cap • .187" (4.75mm) Quick Connect



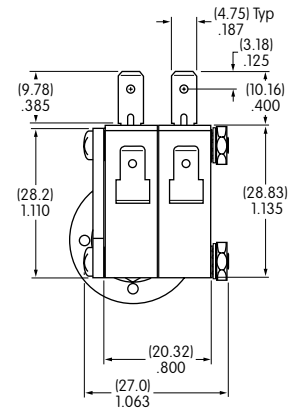
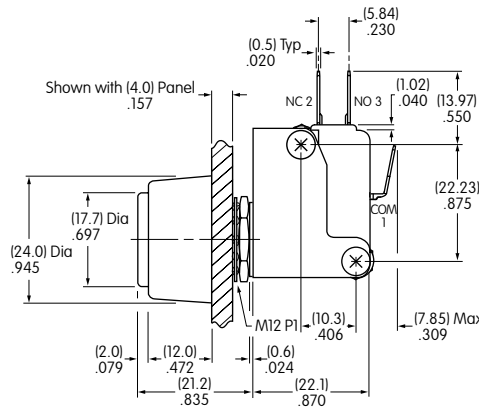
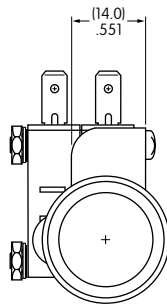
SCB15S15A-3C



Round Cap & Shroud • .187" (4.75mm) Quick Connect



SCB25P15A-4CA



Rectangular Cap & Shroud • .250" (6.35mm) Quick Connect



SCB26S15B-5CA

