

● PROFESSIONAL LED INDICATORS Ø5.0mm Mounting

FEATURES



604 SERIES

PACK QUANTITY = 10 PIECES

- Bright nickel plated brass housing
- Sealed to IP67
- Excellent wide viewing angle characteristics
- Suitable for high vibration applications
- Internal reverse protection diode fitted as standard in all voltage models.

SPECIFICATION

Ordering Information & Typical Technical Characteristics (Ta = 25°C)

Mean Time Between Failure = 100,000 Hours. Luminous intensity figures refer to the unmodified discrete LED.

PART NUMBER	COLOUR	LENS	VOLTAGE DC (Vdc) Vopr	CURRENT DC (mA) Iopr	LUMINOUS INTENSITY Iv@20mA (mcd)	WAVE LENGTH λp (nm)	OPERATING TEMP Topr	STORAGE TEMP Tstg	
HIGH INTENSITY									
604-301-04	Red	Smoked	2.1	20	900	660	-30 ~ +85 [^]	-40 ~ +85	Yes
604-325-04	Yellow	Smoked	2.2	20	4300	590	-30 ~ +85 [^]	-40 ~ +85	Yes
604-324-04	Green	Smoked	2.2	20	7800	525	-30 ~ +85 [^]	-40 ~ +85	Yes
604-934-04	Blue	Smoked	2.2	20	2300	470	-30 ~ +85 [^]	-40 ~ +85	Yes
604-998-04	Cool White	Smoked	2.2	20	4600	*see below	-30 ~ +85 [^]	-40 ~ +85	Yes
604-301-23	Red	Smoked	24-28	20	900	660	-30 ~ +85 [^]	-40 ~ +85	Yes
604-325-23	Yellow	Smoked	24-28	20	4300	590	-30 ~ +85 [^]	-40 ~ +85	Yes
604-324-23	Green	Smoked	24-28	20	7800	525	-30 ~ +85 [^]	-40 ~ +85	Yes
604-934-23	Blue	Smoked	24-28	20	2300	470	-30 ~ +85 [^]	-40 ~ +85	Yes
604-998-23	Cool White	Smoked	24-28	20	4600	*see below	-30 ~ +85 [^]	-40 ~ +85	Yes
UNITS			Vdc	mA	mcd	nm	°C	°C	



Other voltages AC/DC available. Please contact our Technical sales.

[^] = Products must be derated according to the derating information. Each derating graph refers to specific LEDs. Refer to page 3.

998	*Typical emission colour cool white			
x	0.296	0.283	0.330	0.330
y	0.276	0.305	0.339	0.318

Intensities (Iv) and colour shades of white (x,y co-ordinates) may vary between LEDs within a batch.

How to Order:

website: www.marl.co.uk • email: sales@marl.co.uk •

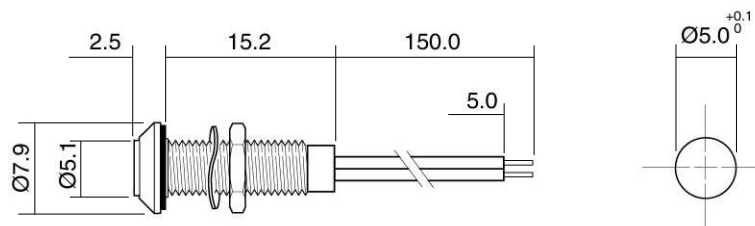
• Telephone +44 (0)1229 582430 • Fax: +44 (0)1229 585155

The information contained in this datasheet does not constitute part of any order or contract and should not be regarded as a representation relating to either products or service. Marl International reserve the right to alter without notice the specification or any conditions of supply for products or service.



BS EN ISO 9001:2000
Approved Manufacturer

604 Series



MOUNTING HOLE

Dimensions in mm (Typical)
Not to scale

Anode termination indicated by red lead.
Mounting hole to be clean and burr free

MATERIALS

Body	Bright Nickel Plated Brass
Nut	Bright Nickel Plated Brass
Panel Seal	Viton
Fresnel lens	Polycarbonate
Encapsulation	Epoxy
Lock Washer	Beryllium Copper

TECHNICAL CHARACTERISTICS

SERIES	MAXIMUM POWER DISSIPATION	MAXIMUM REVERSE VOLTAGE	PANEL CUTOUT	NUT MOUNTING TORQUE	MINIMUM MOUNTING CENTRES	MIN/MAX. PANEL THICKNESS
604	425	3* / 75•	5.0	0.35	x,y =10.0	1.5-8.0
	mW	Vdc	mm	Nm	mm	mm

* = Current Version • = Voltage Version

OPTIONAL FLYING LEAD TERMINATIONS

ORDER CODE SUFFIX	SUPPLY VOLTAGE	WIRE COLOUR	WIRE LENGTH	NO/DIAMETER OF CONDUCTORS	DIAMETER OVER INSULATION	COMMENTS
19	DC Products	Red-anode / Black-cathode	1000mm	19/0.15mm	1.2mm	Customised lengths available

How to Order:

website: www.marl.co.uk • email: sales@marl.co.uk •

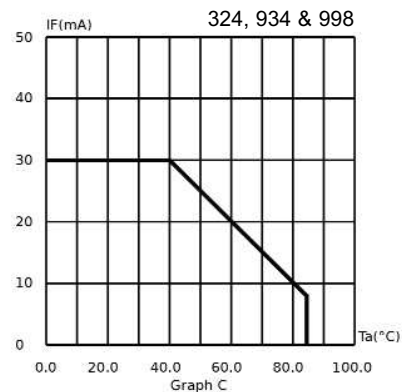
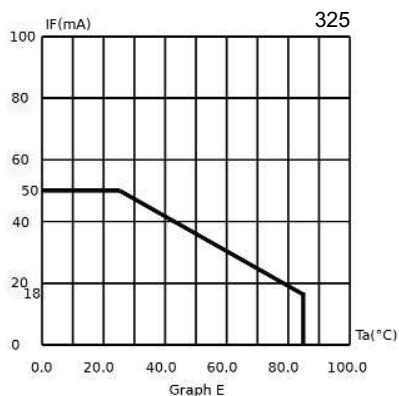
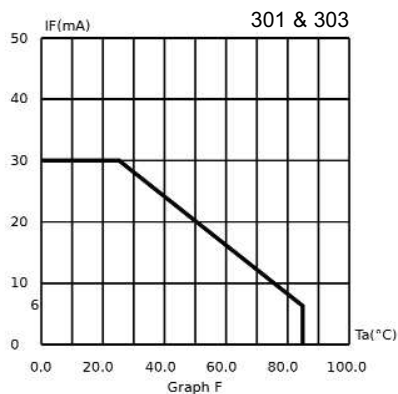
• Telephone +44 (0)1229 582430 • Fax: +44 (0)1229 585155

The information contained in this datasheet does not constitute part of any order or contract and should not be regarded as a representation relating to either products or service. Marl International reserve the right to alter without notice the specification or any conditions of supply for products or service.



BS EN ISO 9001:2000
Approved Manufacturer

DERATING INFORMATION



ALSO AVAILABLE

Part numbers also available in the 604 Series:

PART NO.	COLOUR	VOLTAGE DC (Vdc) Vopr
604-301-23-19	Red	28 VDC
604-303-21	Red	12 VDC
604-312-01	Green	2mA
604-312-22	Green	24 VDC
604-324-20-19	Green	5/6 VDC
604-324-22-19	Green	24 VDC
604-324-23-19	Green	28 VDC
604-325-23-19	Yellow	28 VDC
UNITS		

The products listed above illustrate all of the options available to order. These products may have custom modifications that alter their operation beyond the generic information contained within this datasheet. Please contact sales for further information.

How to Order:

website: www.marl.co.uk • email: sales@marl.co.uk •

• Telephone +44 (0)1229 582430 • Fax: +44 (0)1229 585155

The information contained in this datasheet does not constitute part of any order or contract and should not be regarded as a representation relating to either products or service. Marl International reserve the right to alter without notice the specification or any conditions of supply for products or service.



BS EN ISO 9001:2000
Approved Manufacturer