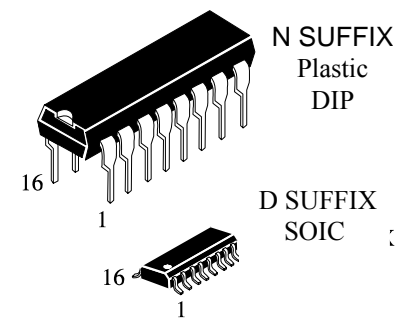


CMOS BCD-to-7-Segment Latch Decoder Drivers

IW4511B

ICs IW4511B is used in high-performance computing systems with low power consumption in portable measuring equipments, communication devices with power supply from telephone networks, instruments using alternative power supplies (solar batteries, thermal elements) etc.

- Standard symmetrical output characteristic
- Operating Voltage Range: 3.0 to 18 V
- 100% testing for quiescent current at 20V
- Maximum input current of 1 μ A at 18 V over full package-temperature range; 100 nA at 18 V and 25°C
- Noise margin (over full package temperature range):
 - 1.0 V min @ 5.0 V supply
 - 2.0 V min @ 10.0 V supply
 - 2.5 V min @ 15.0 V supply

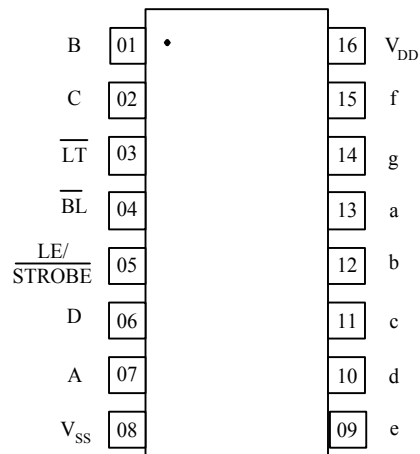


N SUFFIX
Plastic
DIP

D SUFFIX
SOIC

ORDERING INFORMATION
 IW4511BN Plastic DIP
 IW4511BD SOIC
 $T_A = -55$ to 125 °C for all packages

PIN ASSIGNMENT



TRUTH TABLE

Inputs							Outputs							Display
LE	BL	LT	D	C	B	A	a	b	c	d	e	f	g	
X	X	L	X	X	X	X	H	H	H	H	H	H	H	8
X	L	H	X	X	X	X	L	L	L	L	L	L	L	blank
L	H	H	L	L	L	L	H	H	H	H	H	H	L	0
L	H	H	L	L	L	H	L	H	H	L	L	L	L	1
L	H	H	L	L	H	L	H	H	L	H	H	L	H	2
L	H	H	L	L	H	H	H	H	H	H	L	L	H	3
L	H	H	L	H	L	L	L	H	H	L	L	H	H	4
L	H	H	L	H	L	H	H	L	H	H	L	H	H	5
L	H	H	L	H	H	L	L	L	H	H	H	H	H	6
L	H	H	L	H	H	H	H	H	H	L	L	L	L	7
L	H	H	H	L	L	L	H	H	H	H	H	H	H	8
L	H	H	H	L	L	H	H	H	H	L	L	H	H	9
L	H	H	H	L	H	L	L	L	L	L	L	L	L	blank
L	H	H	H	L	H	H	L	L	L	L	L	L	L	blank
L	H	H	H	H	L	L	L	L	L	L	L	L	L	blank
L	H	H	H	H	L	H	L	L	L	L	L	L	L	blank
L	H	H	H	H	H	H	L	L	L	L	L	L	L	blank
H	H	H	X	X	X	X	*							*

* - Depends on BCD code previously, applied when LE=L
 X – Don't Care

MAXIMUM RATINGS

Symbol	Parameter	Recommended operating conditions		Maximum ratings		Unit
		min	max	min	max	
V_{DD}	DC Supply Voltage	3	18	-0.5	20	V
V_I	Input Voltage Range	-	-	-0.5	$V_{DD}+0.5$	V
V_O	Output Voltage Range	-	-	-0.5	$V_{DD}+0.5$	V
I_I	DC Input Current	-	-	-	± 10	mA
P_D	Power dissipation per package	-	-	-	500*	mW
P_{tot}	Power Dissipation per Output Transistor	-	-	-	100	mW

* P_D for IW4511BN for temperature range - 55 - +100 °C and for ICs IW4511BD for temperature range - 55 - +65 °C
 P_D for IW4511BN derate linearity at 12 mW/°C for temperature range +100 - +125°C.
 P_D for IW4511BD derate linearity at 7 mW/°C for temperature range +65- +125°C.

STATIC ELECTRICAL CHARACTERISTIC

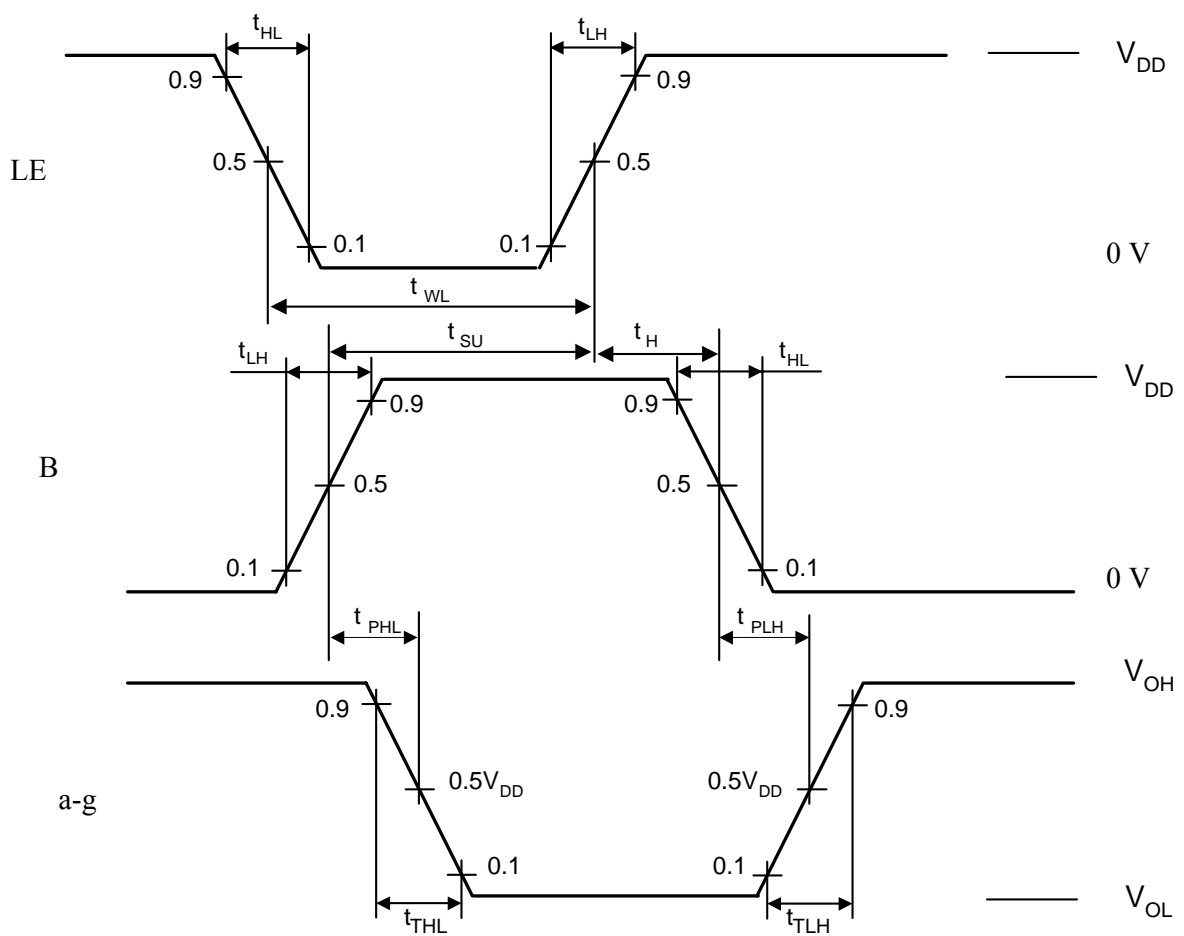
Symbol	Parameter	Test conditions	V _{DD} , V	Guaranteed Limits						Units
				-55°C		25°C		125°C		
				min	max	min	max	min	max	
V _{IH}	Minimum High-Level Input Voltage	V _O = 0.5 V or V _{DD} -1.2 V	5.0	3.5	-	3.5	-	3.5	-	V
		V _O = 1.0 V or V _{DD} -1.2 V	10	7.0	-	7.0	-	7.0	-	
		V _O = 1.5 V or V _{DD} -1.2 V	15	11	-	11	-	11	-	
V _{IL}	Maximum Low-Level Input Voltage	V _O = 0.5 V or V _{DD} -1.2 V	5.0	-	1.5	-	1.5	-	1.5	V
		V _O = 1.0 V or V _{DD} -1.2 V	10	-	3.0	-	3.0	-	3.0	
		V _O = 1.5 V or V _{DD} -1.2 V	15	-	4.0	-	4.0	-	4.0	
V _{OH}	High-Level Output Voltage	V _I = V _{SS} or V _{DD}	5.0	4.0	-	4.1	-	4.2	-	V
			10	9.0	-	9.1	-	9.2	-	
			15	14.0	-	14.1	-	14.2	-	
V _{OL}	Low-Level Output Voltage	V _I = V _{SS} or V _{DD}	5.0	-	0.05	-	0.05	-	0.05	V
			10	-	0.05	-	0.05	-	0.05	
			15	-	0.05	-	0.05	-	0.05	
I _{IL}	Low -Level Input Current	V _I = V _{SS}	18	-	-0.1	-	-0.1	-	-1.0	μA
I _{IH}	High -Level Input Current	V _I = V _{DD}	18	-	0.1	-	0.1	-	1.0	μA
I _{DD}	Quiescent Devices Current	V _I = V _{SS} or V _{DD}	5.0	-	5.0	-	5.0	-	150	μA
			10	-	10	-	10	-	300	
			15	-	20	-	20	-	600	
			20	-	100	-	100	-	3000	
I _{OL}	Output Low (Sink) Current	V _I = V _{SS} or V _{DD} V _{OL} = 0.4 V V _{OL} = 0.5 V V _{OL} = 1.5 V	5.0	0.64	-	0.51	-	0.36	-	mA
			10	1.6	-	1.3	-	0.9	-	
			15	4.2	-	3.4	-	2.4	-	
I _{OH}	Output High (Source) Current	V _I = V _{SS} or V _{DD} V _{OH} = 2.5 V V _{OH} = 4.6 V V _{OH} = 9.5 V V _{OH} = 13.5 V	5.0	-1.6	-	-1.3	-	-0.9	-	mA
			5.0	-0.46	-	-0.37	-	-0.26	-	
			10	-0.98	-	-0.8	-	-0.55	-	
			15	-3.33	-	-2.7	-	-1.9	-	

DYNAMIC ELECTRICAL CHARACTERISTICS ($C_L=50$ pF, $R_L = 200$ kOhm, $t_{LH} = t_{HL} \leq 20$ ns)

Symbol	Parameter	Test conditions	$V_{DD},$ V	Guaranteed Limits						Unit
				-55 °C		25 °C		125 °C		
				min	max	min	max	min	max	
t_{PHL}	Propagation Delay Time High-to-Low Level Input (A-D)	Time diagram on the figure	5.0	-	1040	-	1040	-	2080	nc
			10	-	420	-	420	-	840	
			15	-	300	-	300	-	600	
	Propagation Delay Time High-to-Low Level Input BL	Time diagram on the figure	5.0	-	700	-	700	-	1400	
			10	-	350	-	350	-	700	
			15	-	250	-	250	-	500	
	Propagation Delay Time High-to-Low Level Input LT	Time diagram on the figure	5.0	-	500	-	500	-	1000	
			10	-	250	-	250	-	500	
			15	-	170	-	170	-	340	
t_{PLH}	Propagation Delay Time Low-to-High Level Input (A-D)	Time diagram on the figure	5.0	-	1320	-	1320	-	2640	nc
			10	-	520	-	520	-	1040	
			15	-	360	-	360	-	720	
	Propagation Delay Time Low-to-High Level Input BL	Time diagram on the figure	5.0	-	800	-	800	-	1600	
			10	-	350	-	350	-	700	
			15	-	300	-	300	-	600	
	Propagation Delay Time Low-to-High Level Input LT	Time diagram on the figure	5.0	-	300	-	300	-	600	
			10	-	150	-	150	-	300	
			15	-	100	-	100	-	200	
t_{THL}	Transition Time High-to-Low Level	Time diagram on the figure	5.0	-	310	-	310	-	620	nc
			10	-	185	-	185	-	370	
			15	-	160	-	160	-	320	
t_{TLH}	Transition Time Low-to-High Level	Time diagram on the figure	5.0	-	80	-	80	-	160	nc
			10	-	60	-	60	-	120	
			15	-	50	-	50	-	100	
t_{SU}	Set-Up Time (A-D) as per LE	Time diagram on the figure	5.0	150	-	150	-	300	-	nc
			10	70	-	70	-	140	-	
			15	40	-	40	-	80	-	
t_H	Hold Time (A - D) after LE	Time diagram on the figure	5.0	0	-	0	-	0	-	nc
			10	0	-	0	-	0	-	
			15	0	-	0	-	0	-	
t_{WL}	LE Pulse Width	Time diagram on the figure	5.0	400	-	400	-	800	-	nc
			10	160	-	160	-	320	-	
			15	100	-	100	-	200	-	

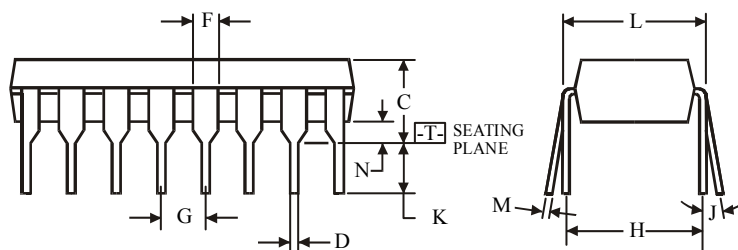
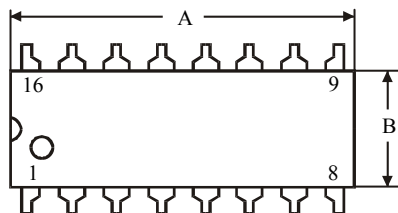
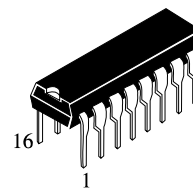
CAPACITANCE

Symbol	Parameter	V_{DD} , v	Guaranteed Limits		Unit
			min	max	
C_{IN}	Input Capacitance	-	-	7.5	pF



Time diagram when taking dynamic parameters

**N SUFFIX PLASTIC DIP
(MS - 001BB)**



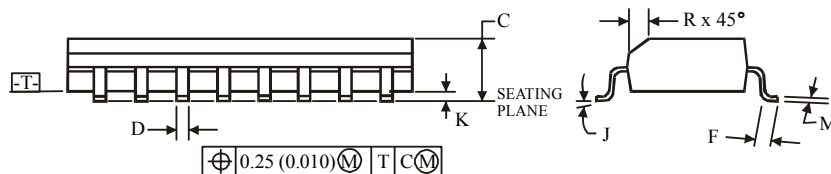
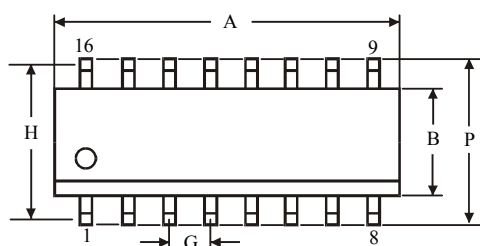
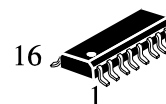
$\oplus 0.25 (0.010) \text{ (M) T}$

NOTES:

- Dimensions "A", "B" do not include mold flash or protrusions.
Maximum mold flash or protrusions 0.25 mm (0.010) per side.

Symbol	Dimension, mm	
	MIN	MAX
A	18.67	19.69
B	6.1	7.11
C		5.33
D	0.36	0.56
F	1.14	1.78
G	2.54	
H	7.62	
J	0°	10°
K	2.92	3.81
L	7.62	8.26
M	0.2	0.36
N	0.38	

**D SUFFIX SOIC
(MS - 012AC)**



$\oplus 0.25 (0.010) \text{ (M) T C (M)}$

NOTES:

- Dimensions A and B do not include mold flash or protrusion.
- Maximum mold flash or protrusion 0.15 mm (0.006) per side for A; for B - 0.25 mm (0.010) per side.

Symbol	Dimension, mm	
	MIN	MAX
A	9.8	10
B	3.8	4
C	1.35	1.75
D	0.33	0.51
F	0.4	1.27
G	1.27	
H	5.72	
J	0°	8°
K	0.1	0.25
M	0.19	0.25
P	5.8	6.2
R	0.25	0.5