



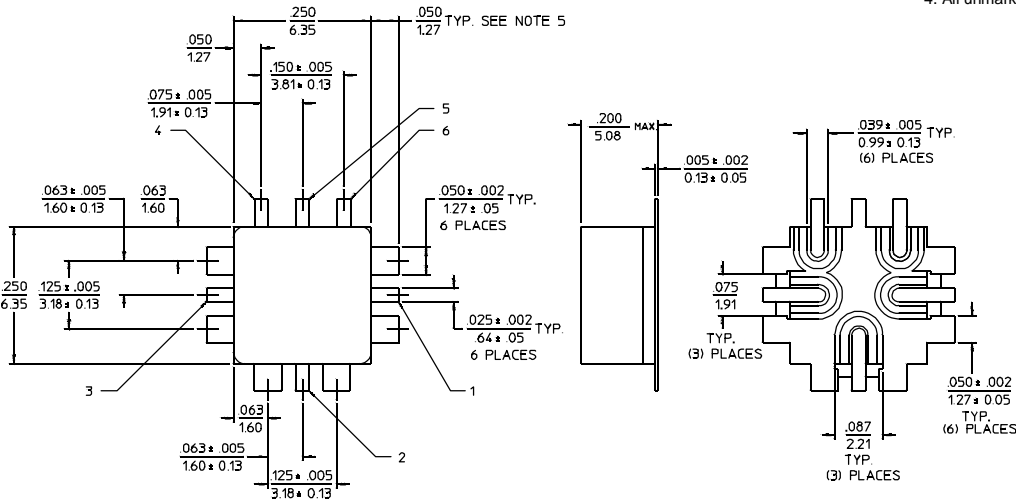
PRINCIPAL SPECIFICATIONS

Model Number	Input Frequency, MHz	Input Frequency Operating, MHz	†Conversion Loss, dB,		*Typical Harmonic Output, F ₁ dB F ₃ dB		RF Input Power, Nom.	Weight, oz (g), Nom.
			Typ.	Max.	F ₁ dB	F ₃ dB		
FDG-4A-1600	25 - 3000	25 - 600	12	14	-27	-30	+13 dBm	0.09 (2.5)
		600 - 2500	12	13	-18	-30		
		2500 - 3000	13	15.5	-15	-20		

All specifications at nominal Input Power of +13 dBm *Typical Harmonic Level is referenced to Second Harmonic Output Power, F₂

Outline A-package

- NOTES: 1. Tolerance on 3 place decimals ±.010(.25) except as noted.
 2. Dimensions in inches over millimeters.
 3. Dimensions marked with * apply only at body.
 4. All unmarked pins are case ground.



PIN NO	FUNCTION
1	INPUT
2	GROUND
3	OUTPUT
4	GROUND
5	GROUND
6	GROUND

General Notes:

- The FDG-4A-1600 covers the frequency range of 25 to 3000 MHz using lumped element technology for broad bandwidths and excellent rejection of fundamental and third harmonic energy.
- Merrimac frequency doublers comply with the applicable sections of MIL-M-28837 and may be supplied screened for compliance with additional specifications for military and space applications requiring the highest reliability.

24May96

GENERAL SPECIFICATIONS

- Impedance: 50 Ω nom.
- Usable Input Range: +7 to 16 dBm
- Input VSWR: 25 - 500 MHz: 1.3:1 typ.
500 - 3000 MHz: 1.8:1 typ
- Operating Temperature: -55° to +85°C