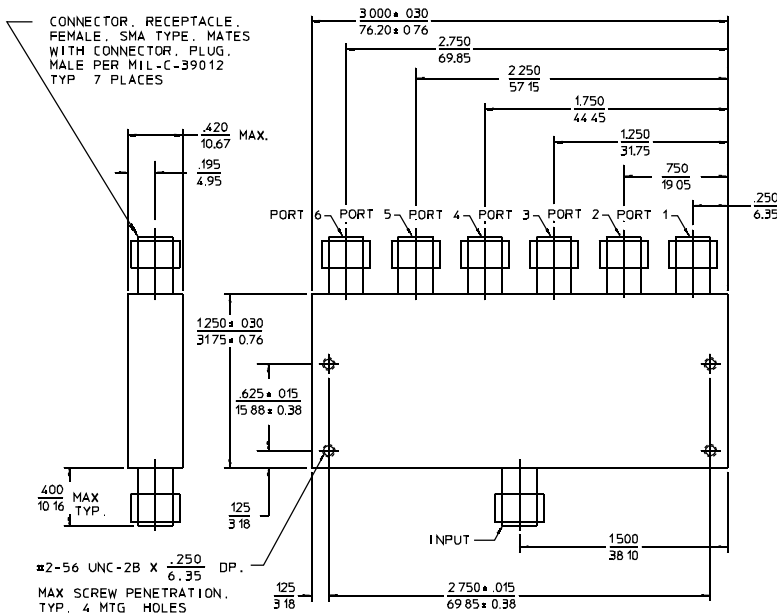


PRINCIPAL SPECIFICATIONS

Model Number	Frequency Range, MHz	Isolation, dB,		Amplitude Balance, dB,		Phase Balance		Insertion Loss, dB,		VSWR In/Out	
		Min.	Typ.	Max.	Typ.	Max.	Typ.	Max.	Typ.	Max.	Typ.
PDML-60-150	1 - 200	25	30	0.4	0.2	4°	2°	1.5	1.0	1.3:1	1.2:1
	200 - 300	20	25	0.4	0.2	4°	2°	1.5	1.0	1.3:1	1.2:1
PDML-60-500	50 - 1000	20	25	0.6	0.3	8°	3°	2.5	1.5	1.5:1	1.2:1

Package Outline



NOTES: 1. Tolerance on 3 place decimals ±.030(.76) except as noted.
2. Dimensions in inches over millimeters.

GENERAL SPECIFICATIONS

- Coupling: - 7.8 dB nom.
- Impedance: 50 Ω nom.
- CW Input Power: 2 W max.
(When used as divider with 1.2:1 VSWR_{out})
- Internal Load Dissipation: 250 mW max.
- Weight, nominal: 2 oz. (57 g)
- Operating Temperature: - 55° to +85°C

General Notes:

1. The PDML-60 series of 6-way, low profile, in-line Power Dividers/Combiners covers 1 to 1000 MHz using lumped element design for broad bandwidth and high performance.
2. Other Power Dividers/Combiners are available for frequencies from 10 kHz to 26 GHz with output port quantity from two to sixteen and with power handling capacity ranging up to several kilowatts. Each divider is designed using the most appropriate technology for the application such stripline, microstrip, lumped element or a combination.

29Apr96