

INTRODUCTION:

Adam Tech IDC SCSI II connectors are widely used as miniature, high density interfaces for many I/O applications. Offered in 50 and 68 positions they are a good choice for compact applications. They feature an extremely reliable contact design with the popular, polarized D face. Adam Tech connectors are manufactured with precision stamped contacts offering a choice of contact plating and a wide selection of mating and mounting options.

FEATURES:

Available in IDC or Card Edge Straddle mount
Blade contact with Blanked terminal
Industry standard compatibility
Durable metal shell design
Precision formed contacts
Variety of Mating and mounting options

MATING CONNECTORS:

Adam Tech SCSI II / III connectors and all industry standard SCSI II / III connectors.

SPECIFICATIONS:

Material:

Insulator: PBT, Glass filled, rated UL94V-0
Insulator Color: Black
Contacts: Phosphor Bronze
Metal backshell: Zinc, Nickel Plated

Contact Plating:

Gold Flash over nickel underplate on mating area, Tin over Copper underplate on tails

Electrical:

Operating Voltage: 250V AC
Current Rating: 1 Amp max.
Contact Resistance: 35 mΩ max. initial
Insulation Resistance: 500 MΩ min.
Dielectric Withstanding Voltage: 500V AC for 1 minute

Mechanical:

Insertion force: 5.3 oz max.
Withdrawal force: 1.0 oz min.
Durability: 100 cycles

Temperature Rating:

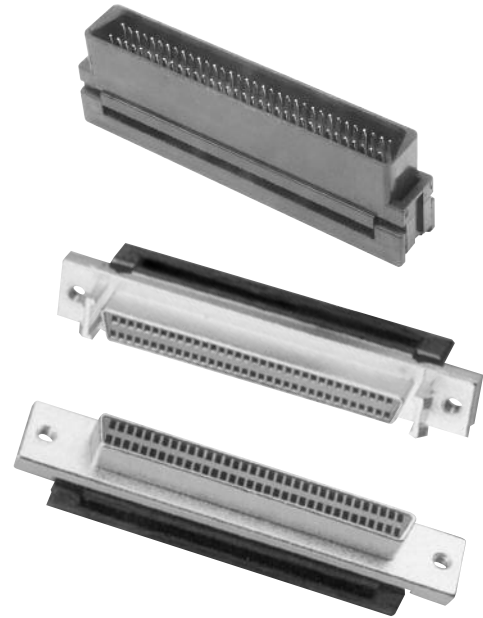
Operating Temperature: -55°C to +105°C

PACKAGING:

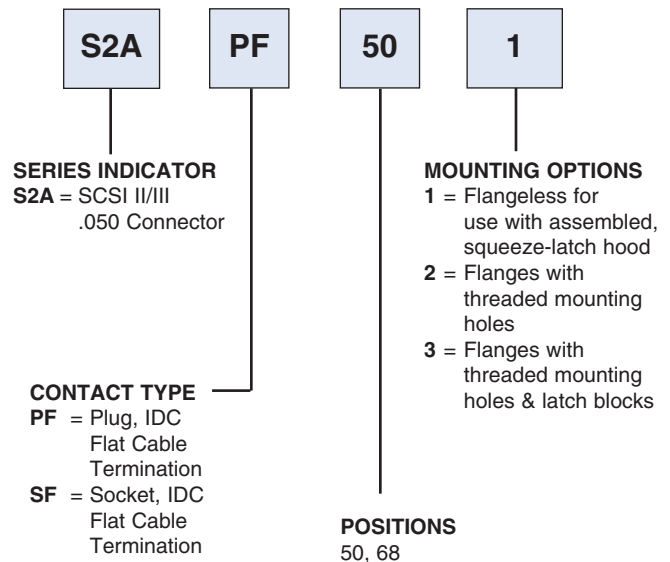
Anti-ESD plastic trays

APPROVALS AND CERTIFICATIONS:

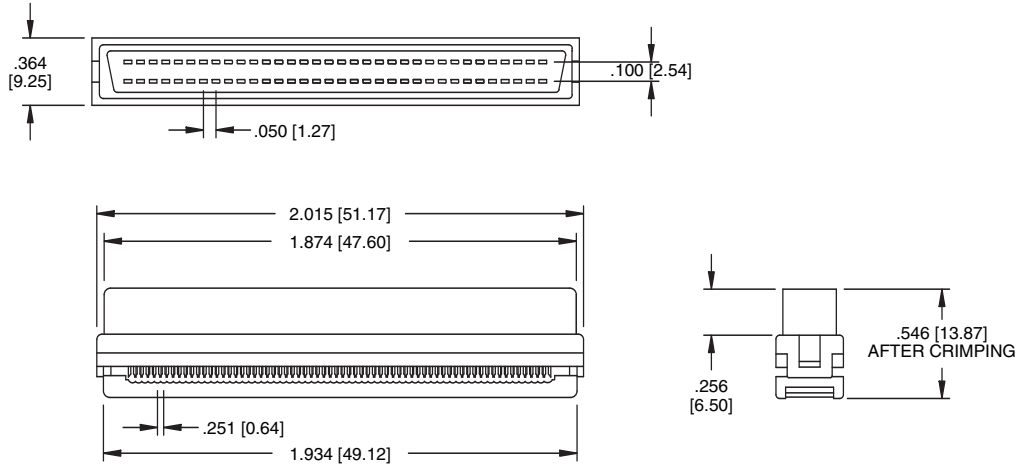
UL Recognized File No. E224053
CSA Certified File No. LR1578596



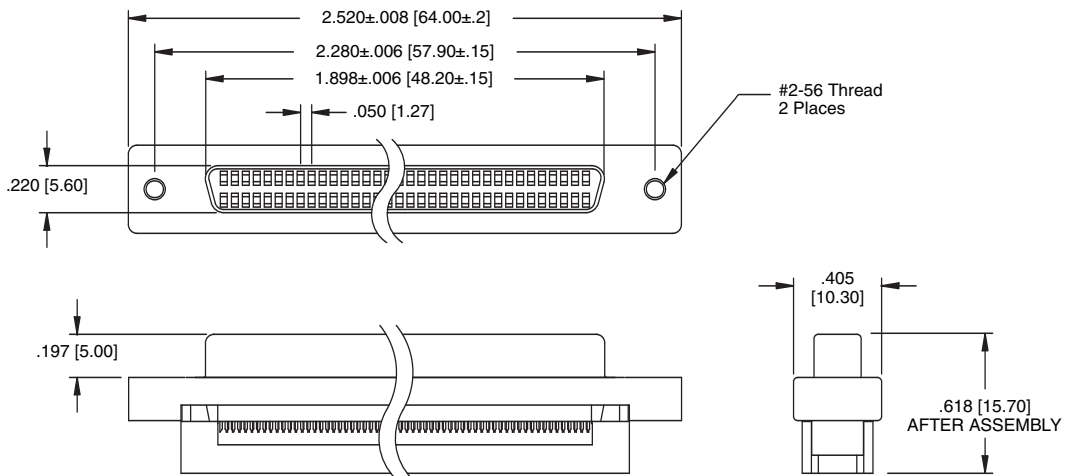
ORDERING INFORMATION



SCSI III 68P PLASTIC SHELL IDC PLUG



SCSI II METAL SHELL IDC SOCKET



SCSI II METAL SHELL IDC SOCKET WITH LATCH BLOCKS

