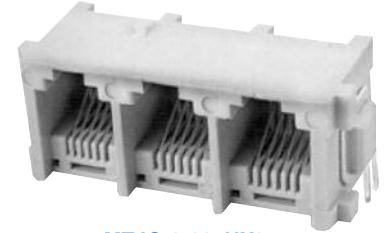
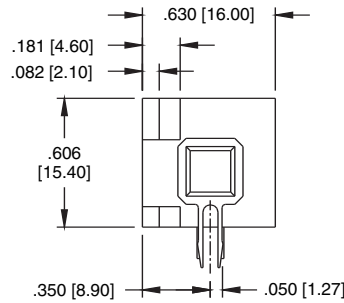
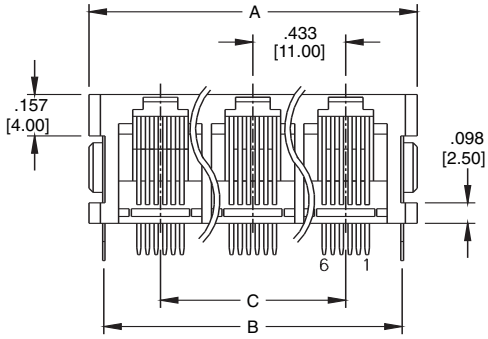


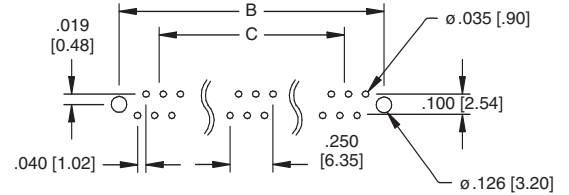
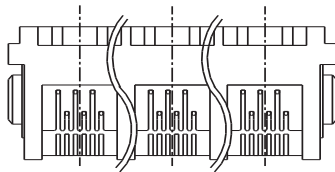
Ordering Information pg. 31

**TYPE 7H**  
**RIGHT ANGLE ENTRY**

**6P4C**  
**6P6C**



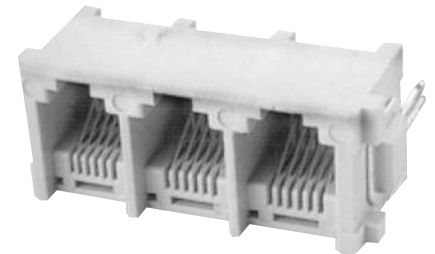
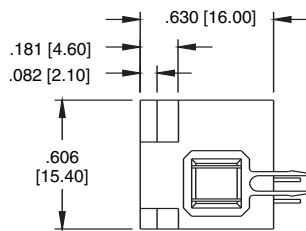
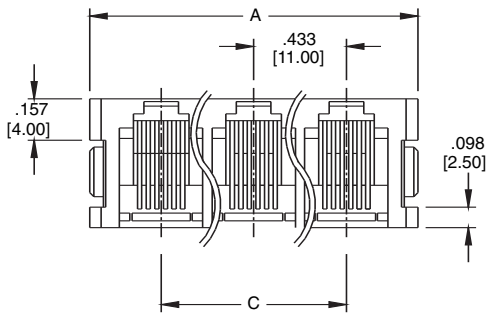
**MTJG-3-667HX2**



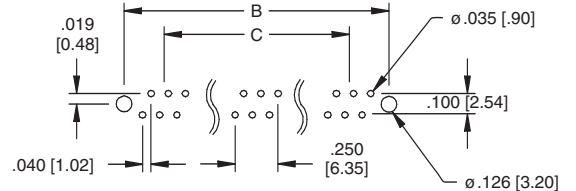
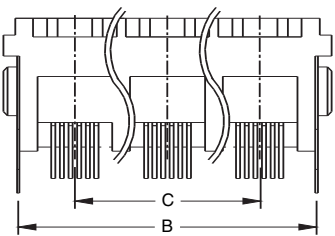
**Recommended PCB Layout**

**TYPE 7V**  
**TOP ENTRY**

**6P4C**  
**6P6C**



**MTJG-3-667VX2**



**Recommended PCB Layout**

DIMENSION	No of Ports						
	2	3	4	5	6	7	8
A	1.110 [28.20]	1.543 [39.20]	1.976 [50.20]	2.409 [61.20]	2.843 [72.20]	3.275 [83.20]	3.710 [94.20]
B	.992 [25.20]	1.425 [36.20]	1.858 [47.20]	2.291 [58.20]	2.724 [69.20]	3.157 [80.20]	3.590 [91.20]
C	.433 [11.00]	.886 [22.00]	1.299 [33.00]	1.732 [44.00]	2.165 [55.00]	2.598 [66.00]	3.030 [77.00]