



# Networking Components

- FILTER MODULES FOR VDSL
- MATCHED TO VDSL TECHNOLOGY REQUIREMENT
- VDSL APPLICATION:
  1. PLAN 998 ANSI
  2. PLAN 997 ETSI
- METALINK IC:MTV9170/9172

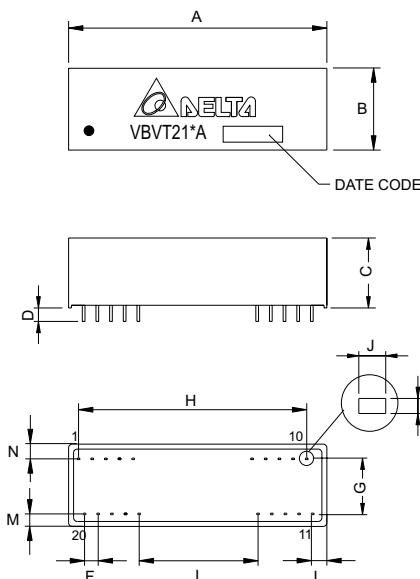


## FOUR/FIVE BAND COMBINATED AFE SOLUTIONS

Part NO.	Description	Application	Impedance (Ohm)	Form (TYPE)	IC Supplier
VBVT210A (CO)	BPF/2RX/2TX	PLAN 998 ANSI	1000	V	METALINK 4-Band
VBVT211A (CPE)	BPF/2RX/2TX	PLAN 998 ANSI	1000	V	METALINK 4-Band
VBVT214A (CO)	BPF/2RX/2TX	PLAN 997 ETSI	1000	V	METALINK 4-Band
VBVT215A (CPE)	BPF/2RX/2TX	PLAN 997 ETSI	1000	V	METALINK 4-Band
VBVT216A (CO)	BPF/2RX/3TX	PLAN 998 ETSI	1000/160/100	V1	METALINK 5-Band
VBVT217A (CPE)	BPF/3RX/2TX	PLAN 998 ETSI	1000	V1	METALINK 5-Band

## MECHANICAL CONSTRUCTION

### V TYPE



	IN		OUT	
RXF-US1	PIN1	+	PIN20	+
	PIN2	-	PIN19	-
RXF-US2	PIN3	+	PIN18	+
	PIN4	-	PIN17	-
TXF-DS1	PIN7	+	PIN14	+
	PIN8	-	PIN13	-
TXF-DS2	PIN9	+	PIN12	+
	PIN10	-	PIN11	-
AGND	PINS,PIN6,PIN15,PIN16			

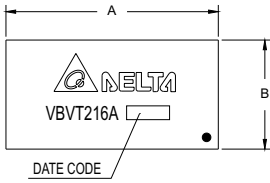
- UNIT : mm / inch
- A = 50.00 / 1.968MAX
  - B = 15.00 / 0.590 MAX
  - C = 14.50 / 0.570 MAX
  - D = 3.0 / 0.118TYP
  - E = 0.50±0.127 / 0.020±0.005
  - F = 2.54 / 0.100 (TYP)
  - G = 9.50 / 0.374 (TYP)
  - H = 44.80 / 1.764 (TYP)
  - I = 24.48 / 0.956 (TYP)
  - J = 0.51 / 0.020 (TYP)
  - K = 0.25 / 0.010 (TYP)
  - L = 2.60 / 0.102 (TYP)
  - M = 2.35 / 0.093 (TYP)
  - N = 3.15 / 0.124 (TYP)

### DELTA ELECTRONICS, INC.

(TAOYUAN PLANT CPBG) 252, SAN YING ROAD, KUEI SAN INDUSTRIAL ZONE, TAOYUAN SHIEN, TAIWAN, R.O.C.  
 TEL: 886-3-3591968; FAX: 886-3-3591991  
[Http://www.deltaww.com/products/networking](http://www.deltaww.com/products/networking)

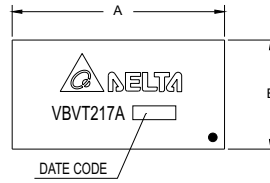
**MECHANICAL CONSTRUCTION**

**V1 TYPE**

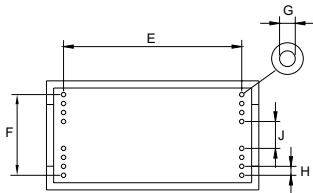
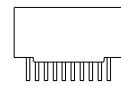
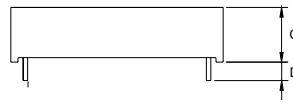
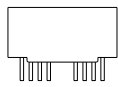
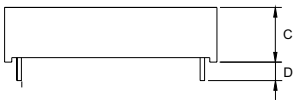


	IN		OUT	
RXF-US1	PIN13	+	PIN4	+
	PIN14	-	PIN3	-
RXF-US2	PIN15	+	PIN2	+
	PIN16	-	PIN1	-
TXF-DS2	PIN8	+	PIN9	+
TXF-DS1 & DS3	PIN7	-	PIN10	-
	PIN6	+	PIN11	+
	PIN5	-	PIN12	-

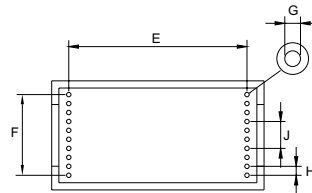
**V1 TYPE**



	IN		OUT	
TXF-US1	PIN8	+	PIN13	+
	PIN7	-	PIN14	-
TXF-US2	PIN10	+	PIN11	+
	PIN9	-	PIN12	-
RXF-DS1	PIN15	+	PIN6	+
	PIN16	-	PIN5	-
RXF-DS2	PIN17	+	PIN4	+
	PIN18	-	PIN3	-
RXF-DS3	PIN19	+	PIN2	+
	PIN20	-	PIN1	-



UNIT : mm / inch  
 A = 38.00 ± 0.500 / 1.496 ± 0.020  
 B = 28.00 ± 0.500 / 1.102 ± 0.020  
 C = 12.00 ± 0.500 / 0.472 ± 0.020  
 D = 4.00 / 0.157 (TYP)  
 E = 32.3 / 1.272 (TYP)  
 F = 22.86 / 0.900 (TYP)  
 G = 0.55 / 0.022 (TYP)  
 H = 2.54 / 0.100 (TYP)  
 J = 7.62 / 0.30 (TYP)



UNIT : mm / inch  
 A = 38.00 ± 0.500 / 1.496 ± 0.020  
 B = 28.00 ± 0.500 / 1.102 ± 0.020  
 C = 12.00 ± 0.500 / 0.472 ± 0.020  
 D = 4.00 / 0.157 (TYP)  
 E = 32.3 / 1.272 (TYP)  
 F = 22.86 / 0.900 (TYP)  
 G = 0.55 / 0.022 (TYP)  
 H = 2.54 / 0.100 (TYP)