

M62295GP

LCD Back-light Control IC

REJ03D0856-0201

Rev.2.01

Nov 14, 2007

Description

M62295GP is a semiconductor integrated circuit designed for PC back-light control, which employs 2 output totempole output circuit specifically suitable for inverter drive with piezo device.

Such necessary functions as light control, protection circuit are housed in 16-pin SSOP package. This allows for simplified peripheral circuit as well as compact and thin set design.

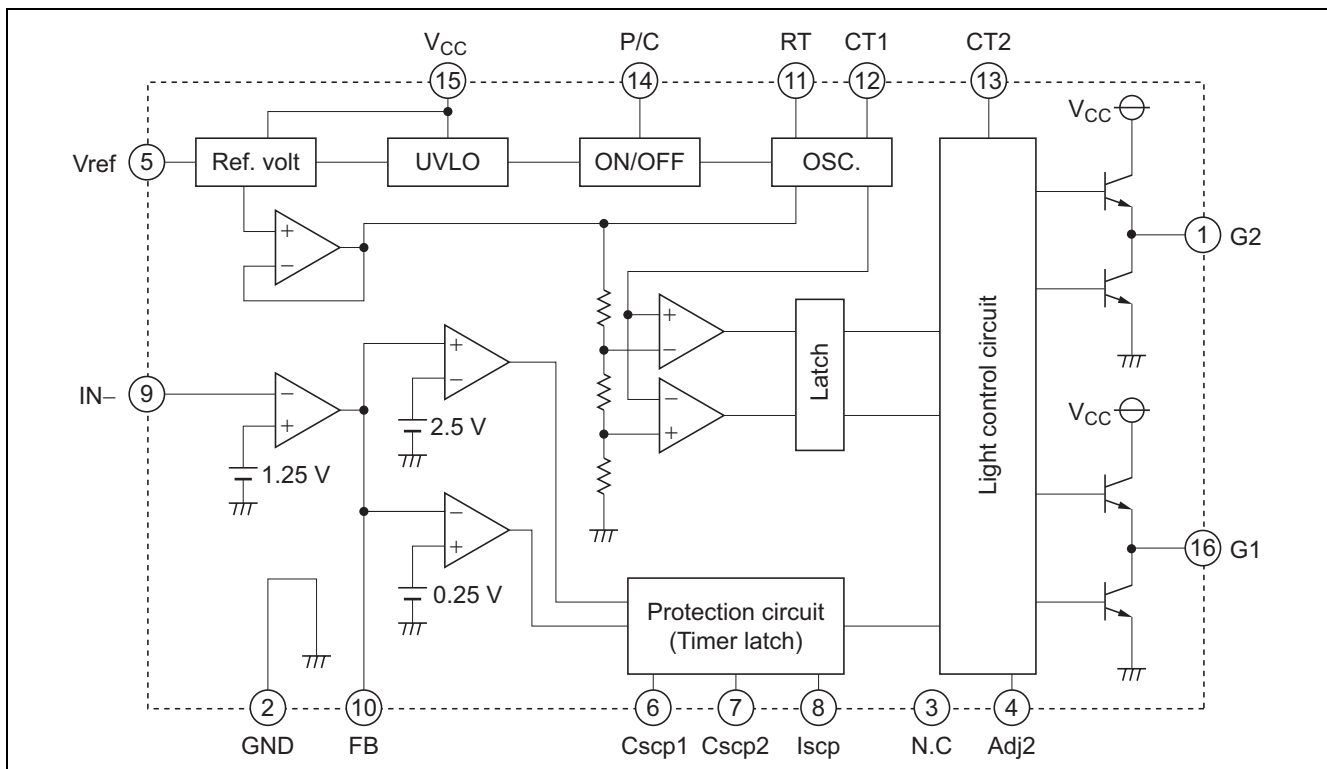
Features

- Direct drive to n-ch/p-ch MOSFET
- Fixed output duty: 45%
- Output current (peak): ± 300 mA
- Light control
 - Pulse synchronous control
Output OFF period is adjusted synchronous with the OSC frequency. (1 kHz-200 kHz)
 - Light control available from 10% (Min.) up to 100% by the voltage applied from outside. (Adj2 terminal)
- Protection functions
 - 2 kinds of timer-latch time setting available by 3 triggers
(few seconds, several tens of seconds set by external capacitor)

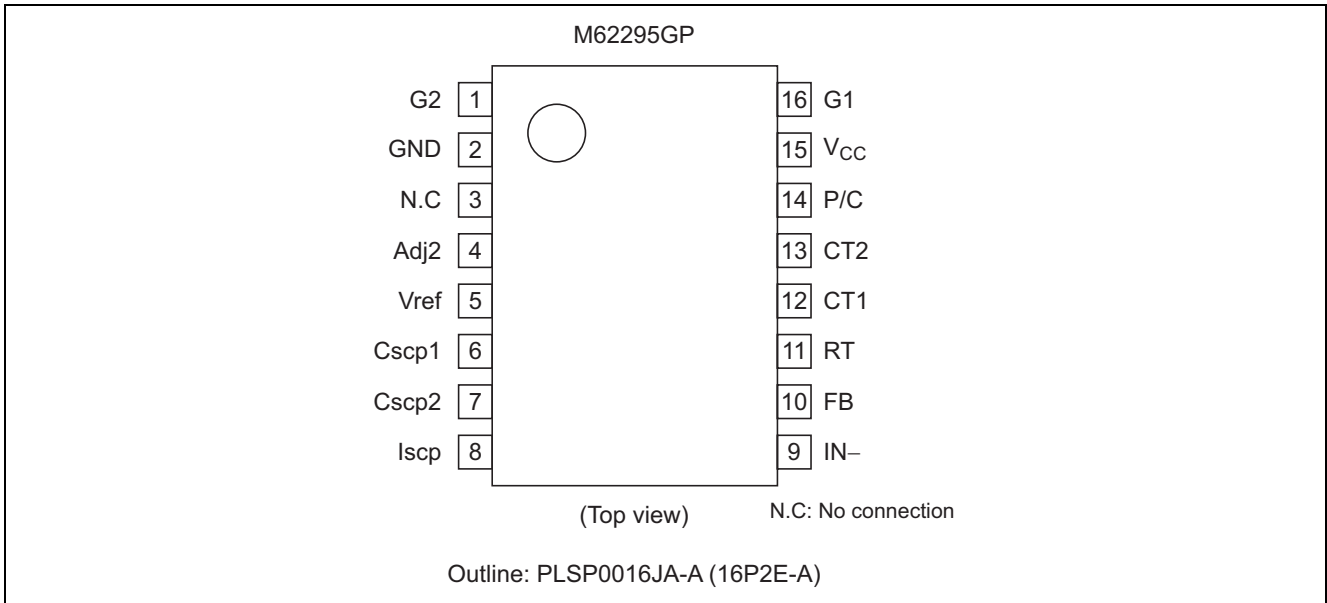
Application

LCD Back-light control for Note P.C etc.

Block Diagram



Pin Arrangement



Absolute Maximum Ratings

(Ta = 25°C, unless otherwise noted)

Item	Symbol	Ratings	Unit	Conditions
Supply voltage	V _{CC}	28	V	
Output current	I _{OUT}	±50	mA	Continuous
		±300	mA	Peak
Power dissipation	P _d	400	mW	Ta = 25°C
Operating temperature	T _{opr}	-20 to +85	°C	
Storage temperature	T _{stg}	-40 to +125	°C	

Electrical Characteristics

(Ta = 25°C, V_{CC} = 15 V, unless otherwise noted)

Block	Item	Symbol	Limits			Unit	Test Conditions
			Min.	Typ.	Max.		
All	Operating supply voltage range	V _{CC}	3.6	—	26	V	
	Circuit current	I _{CC}	4.5	6	7.5	mA	
	Circuit current in power control state	I _{CC} (PC)	15	30	55	μA	
UVLO	ON threshold voltage	V _{TH ON}	3.27	3.43	3.59	V	
	OFF threshold voltage	V _{TH OFF}	—	3.36	—	V	
	Hysteresis	V _{hys}	35	70	140	mV	
OP. Amp.	Input bias current	I _B	-500	-30	—	nA	
	Open loop gain	A _V	—	80	—	dB	
	Gain bandwidth product	GB	—	0.6	—	MHz	
	Max. output voltage	V _{FB+}	2.65	2.8	—	V	
	Min. output voltage	V _{FB-}	—	100	200	mV	
	Max. sink current	I _{FB+}	1	2	—	mA	
	Max. source current	I _{FB-}	-50	-80	—	μA	
Ref. voltage	Reference voltage	V _{ref}	2.40	2.50	2.60	V	
	Line regulation	LINE	—	5	—	mV	
	Max. load current	I _{ref} (Max)	1	5	—	mA	
OSC.	Oscillating frequency	f _{osc}	—	100	—	kHz	
	Max. oscillating frequency	f _{osc} (Max)	—	—	200	kHz	
	RT terminal voltage	V _{RT}	1.1	1.25	1.4	V	
Light control	Adj2 voltage at min. duty	V _{Adj2} (Min)	2.3	2.4	2.5	V	
	Min. duty for light control	Min Duty	5	10	15	%	V _{Adj2} = V _{ref}
	Adj2 voltage at 100% duty	V _{Adj2} (Max)	0.1	0.2	0.3	V	
	Adj2 terminal current	I _{Adj2}	-100	-10	+100	nA	
	Light control frequency	f _{osc} (CT2)	—	1	—	kHz	f _{osc} = 100 kHz
Protection	FB terminal H threshold volt.	FB V _{TH} (H)	2.35	2.5	2.65	V	
	FB terminal L threshold volt.	FB V _{TH} (L)	0.2	0.25	0.3	V	
	IscpL detection voltage.	Iscp V _{TH} (L)	1.1	1.25	1.4	V	
	Cscp1 charge current	ICSCP1	-0.8	-1.3	-1.8	μA	
	Cscp2 charge current	ICSCP2	-0.8	-1.3	-1.8	μA	
	Cscp1 detection voltage	CSCP1V _{TH}	2.35	2.5	2.65	V	
	Cscp2 detection voltage	CSCP2V _{TH}	1.1	1.25	1.4	V	
	Circuit current at timer-latch	I _{timer-L}	1.2	2.2	3.2	mA	
P/C	P/C terminal flow-in current	I _{P/C}	1	2	4	μA	
	P/C threshold voltage	V _{TH} (ON)	0.4	0.7	1.0	V	
Output	Output duty	Duty	42	45	48	%	R _T = 12.4 kΩ, C _{T1} = 470 pF
	Output low voltage	V _{OL}	—	0.05	0.4	V	
	Output high voltage	V _{OH}	13.0	13.5	—	V	

Function Description

- Output oscillation circuit and tooth-wave generating circuit for light control (RT, CT1, CT2)

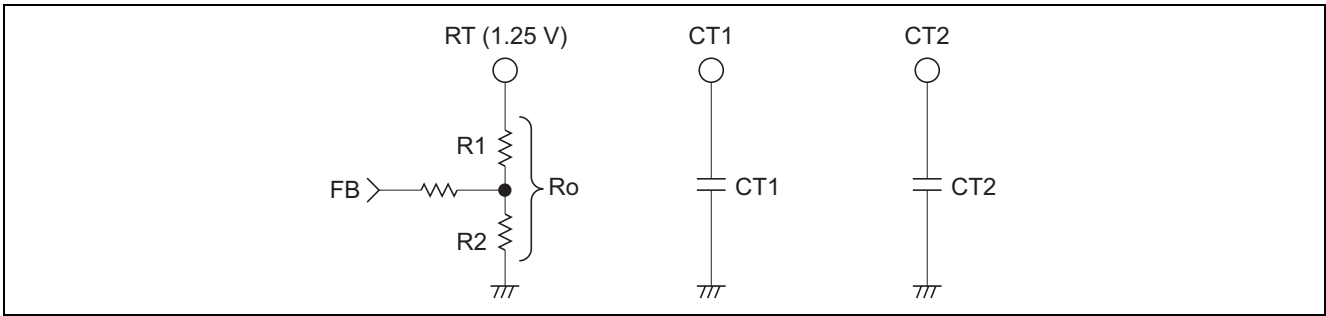


Figure 1 Connections of RT, CT1, CT2

As shown in Figure 1, charge/discharge current for each oscillation circuit is set by connecting resistors to RT terminal.

RT terminal is connected to FB terminal by resistor to control the frequency for light control.

CT1 is the terminal for connecting capacitor for output oscillation circuit, generating triangular-wave oscillating between lower limit (approx. 0.25 V) and upper limit (approx. 1.25 V) by the charge current set at RT terminal.

CT2 is the terminal for connecting capacitor for tooth-wave for light control, into which one twentieth of charge current of CT1 terminal flows generating tooth-wave oscillating between lower limit (approx. 0.25 V) and upper limit. (approx. 1.25 V)

Each charge current and oscillation frequency is decided by the formula shown below.

$$\text{CT1 charge / Discharge current (ICT1 charge)} = \frac{1.25}{R_o}$$

$$\text{CT2 charge / Discharge current (ICT2 charge)} = \frac{1.25}{R_o} \cdot \frac{1}{20}$$

$$\text{Output freq. (f}_{osc}) = \frac{1}{T} = \frac{1}{CT1 \cdot \frac{2}{ICT1 \text{ charge}}}$$

$$\text{Tooth-wave freq. (CT2}_{osc}) = \frac{1}{CT2 \cdot \frac{1}{ICT2 \text{ charge}}}$$

$$\frac{\text{Tooth-wave freq. (CT2}_{osc})}{\text{Output freq. (f}_{osc})} \text{ (divided ratio)} = \frac{CT1}{CT2 \cdot 10}$$

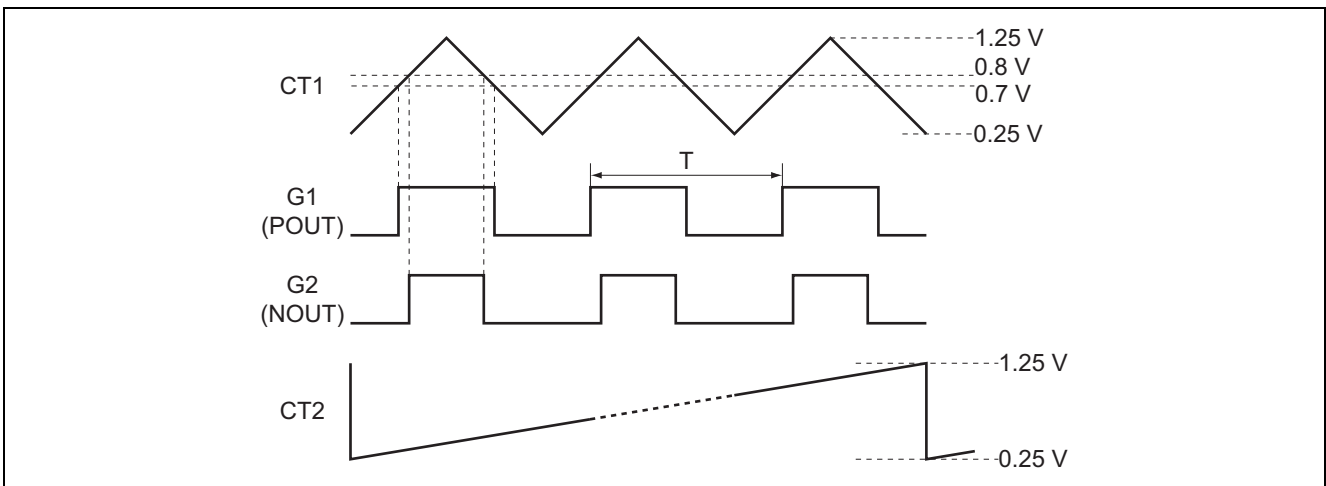


Figure 2 Waveform for CT1, CT2, and G1, G2

- ON/OFF control function (P/C)

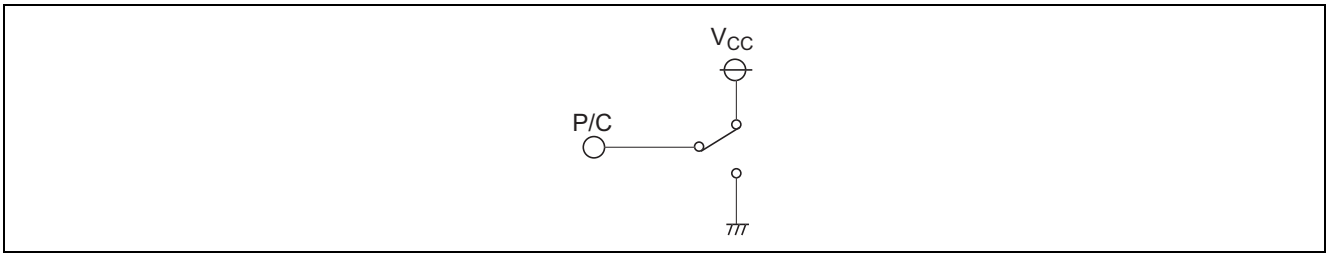


Figure 3 Connection Example for P/C

ON/OFF control is available using P/C terminal. As shown in Figure 3, ON/OFF control is made by connecting P/C terminal to V_{CC} or GND or by making P/C terminal open.

P/C = V_{CC} : IC in normal operation mode
 P/C = GND & OPEN: IC operation at halt

- Light control function (Adj2)

Figure 4 shows the connections of Adj2 terminal.

When the light control voltage is 2.4 V or more, divided voltage by the resistors is applied. Light control is decided by the OSC. frequency of CT2 and the applied voltage to Adj2 terminal.

Figure 5 shows how the applied voltage to Adj2 terminal relates itself to light control.

The voltage range of Adj2 terminal available for light control is 0.1 V to 2.4 V.

When the voltage is 2.4 V or more, light control duty becomes minimum (10%), and when it is 0.1 V or less, light control duty becomes 100%.

Minimum duty is available by connecting Adj2 terminal to Vref terminal.

Output waveform on above mentioned stage is shown in Figure 6 (a) to Figure 6 (c). Figure 6 (a) shows 100% light controlled state, Figure 6 (b) middle state (50% light controlled), Figure 6 (c) minimum duty state.

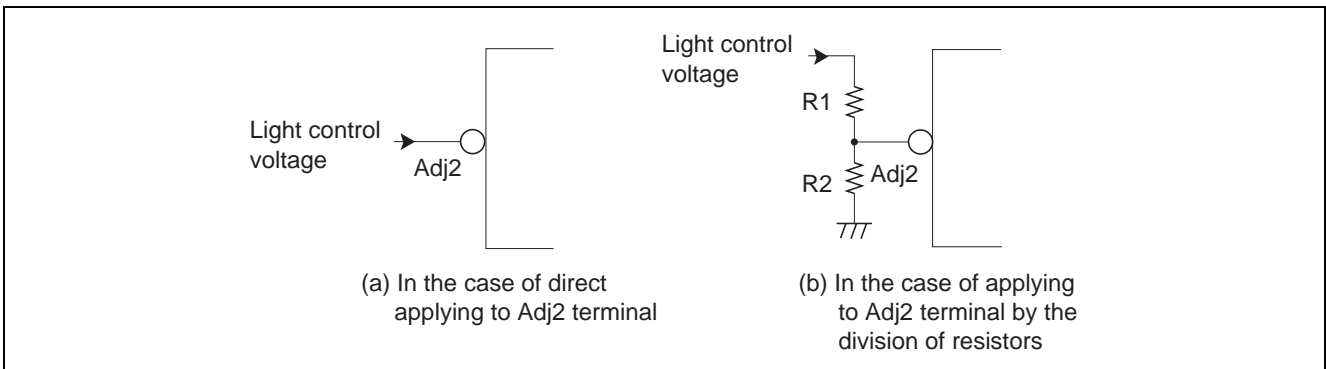


Figure 4 Connections of Adj2 Terminal

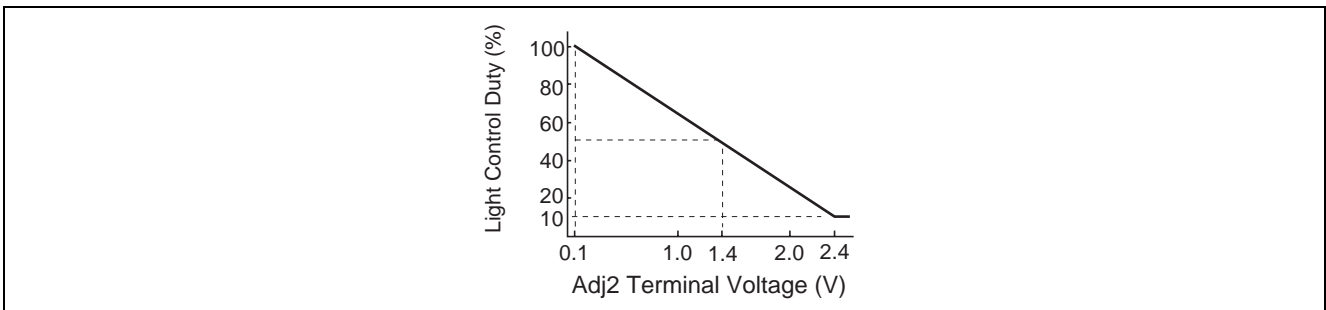


Figure 5 Adj2 Terminal Voltage-light Control Duty Characteristics

Formula for light control level by light control voltage

$$\text{ON Duty} = (100 - \text{ON Duty Min}) \times \frac{2.4 - V_{\text{Adj2}}}{2.4} + \text{ON Duty Min} (\%)$$

V_{Adj2}: Adj2 terminal voltage (V)

ON Duty Min = 10 (%)

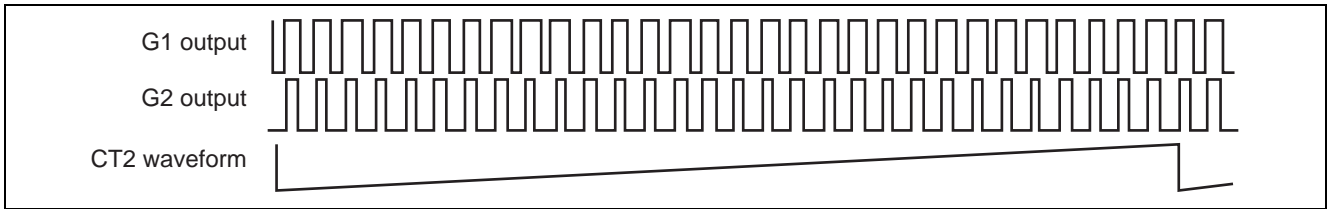


Figure 6 (a) 100% Light Control

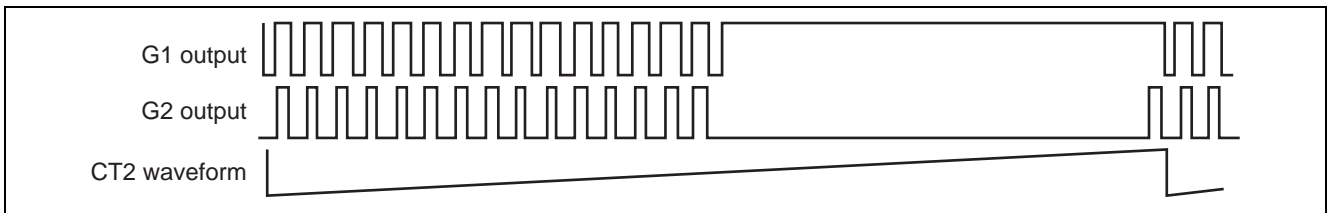


Figure 6 (b) 50% Light Control



Figure 6 (c) 10% Light Control

- Protection function (timer-latch) (Cscp1, Cscp2, Iscp)

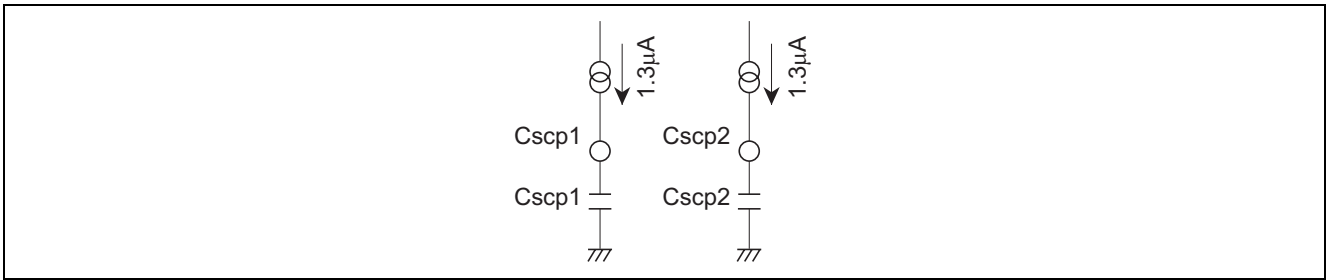


Figure 7 Connections of Cscp1, Cscp2

Application for timer-latch by detecting tube current and feedback voltage is available by using Iscp, Cscp1, Cscp2 terminal.

Two kinds of setting for timer-latch time is available by the setting of Cscp1, Cscp2. Each timer-latch time is set by the formula below.

— Cscp1: Terminal for capacitance for timer-latch set (few second)

$$\text{Timer-L (Cscp1)} = \text{Cscp1} \times \frac{2.5}{1.3 \times 10^{-6}}$$

— Cscp2: Terminal for capacitance for timer-latch set (few millisecond)

$$\text{Timer-L (Cscp2)} = \text{Cscp2} \times \frac{1.25}{1.3 \times 10^{-6}}$$

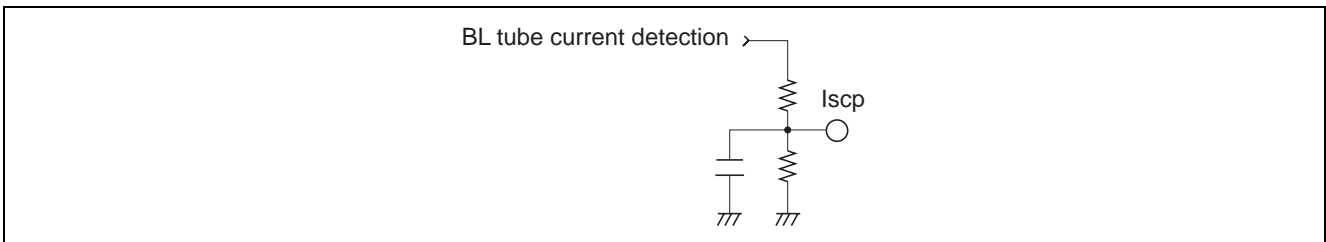


Figure 8 Connections of Iscp Terminal

— Detection of tube current

Detection of tube current is made by Iscp terminal.

Detection voltage for Iscp terminal is set 1.25 V.

After power is on, when Iscp voltage does not rise up to 1.25 V by timer-L (Cscp1) time, or when Iscp voltage becomes 1.25 V or less after start-up, abnormality is detected to move on to the protection operation mode in Figure 1.

If Iscp voltage is less than 1.25 V, light control is not made. (100%)

— Detection of feedback voltage

Detection of feedback voltage is made by FB terminal.

When FB terminal voltage goes down to FB low detection voltage (0.25 V) or less, or when it rise up to FB terminal high detection voltage or more, abnormality is detected to move on to the protection operation mode in Figure 1.

Table 1 Protection Operation Mode at a Glance

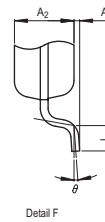
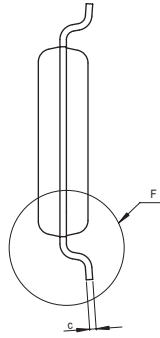
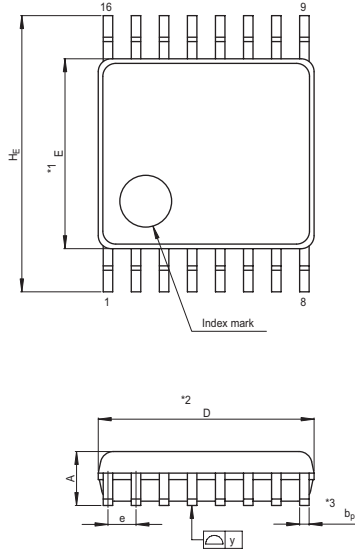
Operation State		Protection Operation Mode	Triggers for Protection Operation			Timer-latch Time	
			Ampout = "H"	Ampout = "L"	I _o = 0	2 s	10 ms
Normal start-up		—	—	—	—	—	—
Start-up in shortcircuited state	I _o = Max	Operation stop after 10 ms		○			○
	I _o = 0	Operation stop instantaneously	○		○		○
Start-up in open state		Operation stop after 2 s.			○	○	
Start-up in black mode	OFF	Operation stop after 2 s.			○	○	
	ON	Normal start-up if turn-on is made within 2 s.			Δ	○	
Shortcircuit while in operation	I _o = Max	Operation stop instantaneously		○			○
	I _o = 0	Operation stop instantaneously	○		○		○
Open while in operation		Operation stop instantaneously			○		○

Notes: 1. Timer-latch time refers to the time under Cscp = 1 μF, Cscp2 = 0.1 μF.

2. Amp. output is "H" when tube current I_o equals to 0, "L" when it is at its minimum. Detection voltage is 2.5 V ("H" side), 0.25 V ("L" side).

Package Dimensions

JEITA Package Code	RENESAS Code	Previous Code	MASS[Typ.]
P-LSSOP16-4.4x5-0.65	PLSP0016JA-A	16P2E-A	0.06g



NOTE)
 1. DIMENSIONS **1* AND **2* DO NOT INCLUDE MOLD FLASH.
 2. DIMENSION **3* DOES NOT INCLUDE TRIM OFFSET.

Reference Symbol	Dimension in Millimeters		
	Min	Nom	Max
D	4.9	5.0	5.1
E	4.3	4.4	4.5
A ₂	—	1.15	—
A	—	—	1.45
A ₁	0	0.1	0.2
b _p	0.17	0.22	0.32
c	0.13	0.15	0.2
θ	0°	—	10°
H _E	6.2	6.4	6.6
e	0.53	0.65	0.77
y	—	—	0.10
L	0.3	0.5	0.7

Notes:

1. This document is provided for reference purposes only so that Renesas customers may select the appropriate Renesas products for their use. Renesas neither makes warranties or representations with respect to the accuracy or completeness of the information contained in this document nor grants any license to any intellectual property rights or any other rights of Renesas or any third party with respect to the information in this document.
2. Renesas shall have no liability for damages or infringement of any intellectual property or other rights arising out of the use of any information in this document, including, but not limited to, product data, diagrams, charts, programs, algorithms, and application circuit examples.
3. You should not use the products or the technology described in this document for the purpose of military applications such as the development of weapons of mass destruction or for the purpose of any other military use. When exporting the products or technology described herein, you should follow the applicable export control laws and regulations, and procedures required by such laws and regulations.
4. All information included in this document such as product data, diagrams, charts, programs, algorithms, and application circuit examples, is current as of the date this document is issued. Such information, however, is subject to change without any prior notice. Before purchasing or using any Renesas products listed in this document, please confirm the latest product information with a Renesas sales office. Also, please pay regular and careful attention to additional and different information to be disclosed by Renesas such as that disclosed through our website. (<http://www.renesas.com>)
5. Renesas has used reasonable care in compiling the information included in this document, but Renesas assumes no liability whatsoever for any damages incurred as a result of errors or omissions in the information included in this document.
6. When using or otherwise relying on the information in this document, you should evaluate the information in light of the total system before deciding about the applicability of such information to the intended application. Renesas makes no representations, warranties or guarantees regarding the suitability of its products for any particular application and specifically disclaims any liability arising out of the application and use of the information in this document or Renesas products.
7. With the exception of products specified by Renesas as suitable for automobile applications, Renesas products are not designed, manufactured or tested for applications or otherwise in systems the failure or malfunction of which may cause a direct threat to human life or create a risk of human injury or which require especially high quality and reliability such as safety systems, or equipment or systems for transportation and traffic, healthcare, combustion control, aerospace and aeronautics, nuclear power, or undersea communication transmission. If you are considering the use of our products for such purposes, please contact a Renesas sales office beforehand. Renesas shall have no liability for damages arising out of the uses set forth above.
8. Notwithstanding the preceding paragraph, you should not use Renesas products for the purposes listed below:
 - (1) artificial life support devices or systems
 - (2) surgical implantations
 - (3) healthcare intervention (e.g., excision, administration of medication, etc.)
 - (4) any other purposes that pose a direct threat to human lifeRenesas shall have no liability for damages arising out of the uses set forth in the above and purchasers who elect to use Renesas products in any of the foregoing applications shall indemnify and hold harmless Renesas Technology Corp., its affiliated companies and their officers, directors, and employees against any and all damages arising out of such applications.
9. You should use the products described herein within the range specified by Renesas, especially with respect to the maximum rating, operating supply voltage range, movement power voltage range, heat radiation characteristics, installation and other product characteristics. Renesas shall have no liability for malfunctions or damages arising out of the use of Renesas products beyond such specified ranges.
10. Although Renesas endeavors to improve the quality and reliability of its products, IC products have specific characteristics such as the occurrence of failure at a certain rate and malfunctions under certain use conditions. Please be sure to implement safety measures to guard against the possibility of physical injury, and injury or damage caused by fire in the event of the failure of a Renesas product, such as safety design for hardware and software including but not limited to redundancy, fire control and malfunction prevention, appropriate treatment for aging degradation or any other applicable measures. Among others, since the evaluation of microcomputer software alone is very difficult, please evaluate the safety of the final products or system manufactured by you.
11. In case Renesas products listed in this document are detached from the products to which the Renesas products are attached or affixed, the risk of accident such as swallowing by infants and small children is very high. You should implement safety measures so that Renesas products may not be easily detached from your products. Renesas shall have no liability for damages arising out of such detachment.
12. This document may not be reproduced or duplicated, in any form, in whole or in part, without prior written approval from Renesas.
13. Please contact a Renesas sales office if you have any questions regarding the information contained in this document, Renesas semiconductor products, or if you have any other inquiries.



RENESAS SALES OFFICES

<http://www.renesas.com>

Refer to "<http://www.renesas.com/en/network>" for the latest and detailed information.

Renesas Technology America, Inc.
450 Holger Way, San Jose, CA 95134-1368, U.S.A
Tel: <1> (408) 382-7500, Fax: <1> (408) 382-7501

Renesas Technology Europe Limited
Dukes Meadow, Millboard Road, Bourne End, Buckinghamshire, SL8 5FH, U.K.
Tel: <44> (1628) 585-100, Fax: <44> (1628) 585-900

Renesas Technology (Shanghai) Co., Ltd.
Unit 204, 205, AZIACenter, No.1233 Lujiazui Ring Rd, Pudong District, Shanghai, China 200120
Tel: <86> (21) 5877-1818, Fax: <86> (21) 6887-7898

Renesas Technology Hong Kong Ltd.
7th Floor, North Tower, World Finance Centre, Harbour City, 1 Canton Road, Tsimshatsui, Kowloon, Hong Kong
Tel: <852> 2265-6688, Fax: <852> 2730-6071

Renesas Technology Taiwan Co., Ltd.
10th Floor, No.99, Fushing North Road, Taipei, Taiwan
Tel: <886> (2) 2715-2888, Fax: <886> (2) 2713-2999

Renesas Technology Singapore Pte. Ltd.
1 Harbour Front Avenue, #06-10, Keppel Bay Tower, Singapore 098632
Tel: <65> 6213-0200, Fax: <65> 6278-8001

Renesas Technology Korea Co., Ltd.
Kukje Center Bldg. 18th Fl., 191, 2-ka, Hangang-ro, Yongsan-ku, Seoul 140-702, Korea
Tel: <82> (2) 796-3115, Fax: <82> (2) 796-2145

Renesas Technology Malaysia Sdn. Bhd
Unit 906, Block B, Menara Amcorp, Amcorp Trade Centre, No.18, Jalan Persiaran Barat, 46050 Petaling Jaya, Selangor Darul Ehsan, Malaysia
Tel: <603> 7955-9390, Fax: <603> 7955-9510