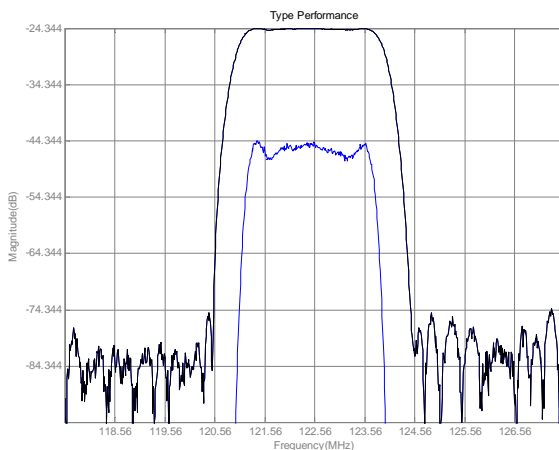




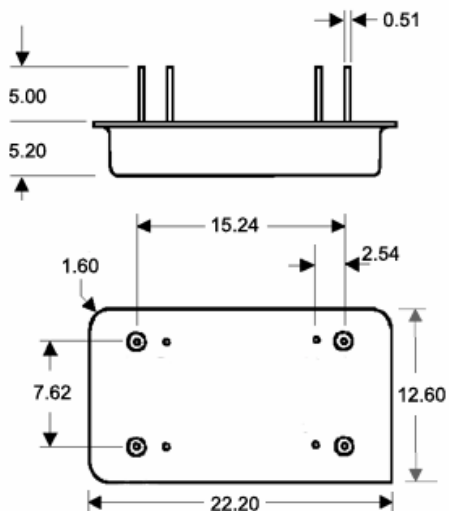
LBS12201 SAW Filter Electrical Characteristic

| <i>Specifications</i> | | | | |
|----------------------------|------|---|---------|---------|
| Parameter | Unit | Minimum | Typical | Maximum |
| Center Frequency | MHz | 122.46 | 122.56 | 122.66 |
| Insertion Loss | dB | - | 25 | 26 |
| 1 dB Bandwidth | MHz | 2.46 | 2.6 | - |
| 3 dB Bandwidth | MHz | 2.6 | 2.85 | - |
| 50 dB Bandwidth | MHz | - | 3.94 | 4 |
| Passband Variation | dB | - | 0.5 | 1.0 |
| Absolute Delay | usec | - | 2.94 | - |
| Ultimate Rejection | dB | 50 | 52 | - |
| Substrate Material | | Quartz | | |
| Ambient Temperature | °C | 25 | | |
| Package Size | | DIP2212 (22.7x12.7x5.2mm ³) | | |

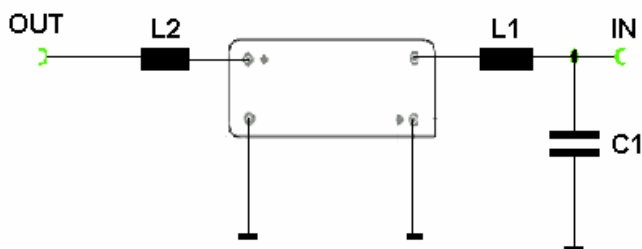
Typical Performance



Package Outline



Matching Configuration



L1=100nH L2=120nH C1=20pF
 Source/Load Impedance=50 ohm

Notes - Component values may change depending on board layout.