

P/N: KB846

**GENERAL PURPOSE
HIGH ISOLATION VOLTAGE
SINGLE TRANSISTOR TYPE
HIGH COLLECTOR VOLTAGE
PHOTOCOUPLER SERIES**

FEATURES

- 1.High isolation voltage between input and output ($V_{iso}=5000$ Vrms).
- 2.High Collector-emitter voltage ($V_{ceo}=70V$).
- 3.Compact dual-in-line package
KB846:4-channel type
- 4.Recognized by UL and CUL, file NO.E225308.
- 5.RoHS Compliant.

DESCRIPTION

- 1.The KB846 (4-channel) is optically coupled isolators containing a GaAS light emitting diode and an NPN silicon phototransistor.
- 2.The lead pitch is 2.54mm.
- 3.Solid insulation thickness between emitting diode and output phototransistor: ≥ 0.6 mm.

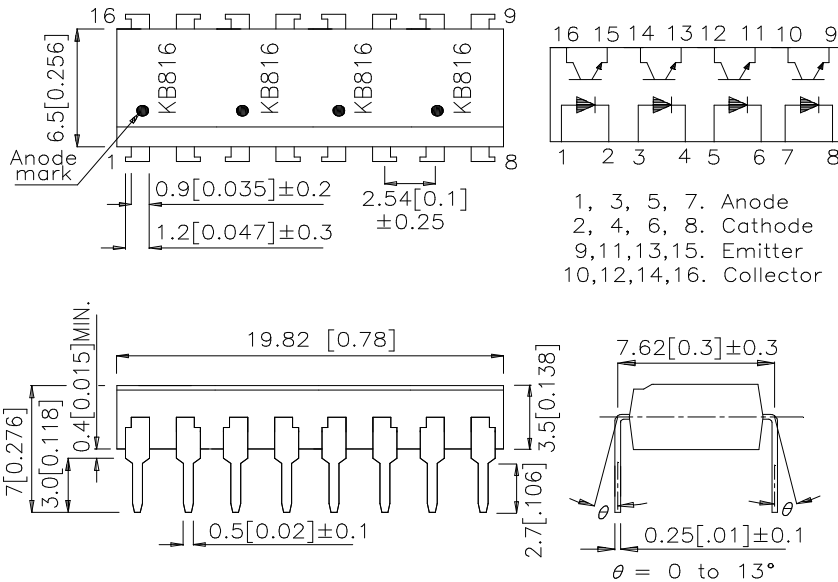
APPLICATIONS

- 1.Computer terminals.
- 2.Registers,copiers,automatic vending machines.
- 3.System appliances, measuring instruments.
- 4.Programmable logic controller.
- 5.Signal transmission between circuits of different potentials and impedances.

P/N: KB846

***PACKAGE DIMENSIONS (UNIT:mm)**

TOLERANCE : $\pm 0.5[\pm 0.02]$ UNLESS OTHERWISE NOTED.



***Absolute Maximum Ratings (Ta=25°C)**

Parameter		Symbol	Rating	Unit
Input	Forward current	I_F	50	mA
	Reverse voltage	V_R	6	V
	Power dissipation	P	70	mW
Output	Collector-emitter voltage	V_{CE0}	70	V
	Emitter-collector voltage	V_{ECO}	6	V
	Collector current	I_C	50	mA
	Collector power dissipation	P_C	150	mW
Total power dissipation		P _{tot}	200	mW
*1 Isolation voltage		Viso	5000	Vrms
Operating temperature		T _{opr}	-30~+100	°C
Storage temperature		T _{stg}	-55~+125	°C
*2 Soldering temperature		T _{sol}	260	°C

*1 40 to 60% RH, AC for 1 minute.

*2 For 10 seconds.

P/N: KB846

***Electro-optical Characteristics (Ta=25°C)**

Parameter		Symbol	Conditions	Min.	Typ.	Max.	Unit
Input	Forward voltage	V _F	I _F =20mA	—	1.2	1.4	V
	Peak forward voltage	V _{FM}	I _{FM} =0.5A	—	—	3.0	V
	Reverse current	I _R	V _R =4V	—	—	10	μA
Output	Collector dark current	I _{CEO}	V _{CE} =20V, I _F =0mA	—	—	10 ⁻⁷	A
Transfer characteristics	*1Current transfer ratio	CTR	I _F =5mA, V _{CE} =5V	50	—	600	%
	Collector-emitter saturation voltage	V _{CE(sat)}	I _F =20mA, I _C =1mA	—	0.1	0.2	V
	Cut-off frequency	f _c	V _{CE} =5V, I _C =2mA R _L =100Ω, -3dB	—	80	—	KHz
	Response time	Rise time	t _r	V _{CE} =2V, I _C =2mA R _L =100Ω	—	4	18
Fall time		t _f	—		3	18	μs

*1 Classification table of current transfer ratio is shown below.

$$CTR = \frac{I_C}{I_F} \times 100\%$$

Model NO.	Rank mark	CTR(%)
KB846L	L	50 to 100
KB846A	A	80 to 160
KB846B	B	130 to 260
KB846C	C	200 to 400
KB846D	D	300 to 600
KB846AB	A or B	80 to 260
KB846BC	B or C	130 to 400
KB846CD	C or D	200 to 600
KB846AC	A,B or C	80 to 400
KB846BD	B,C or D	130 to 600
KB846AD	A,B,C or D	80 to 600
KB846	L,A,B,C,D or No mark	50 to 600

P/N: KB846

Fig. 1 Current Transfer Ratio vs. Forward Current

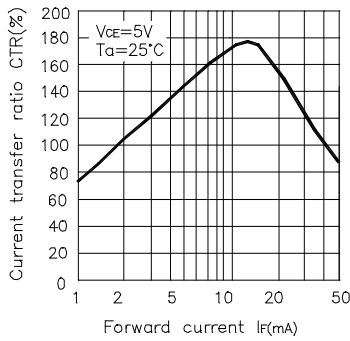


Fig. 2 Forward Current vs. Forward voltage

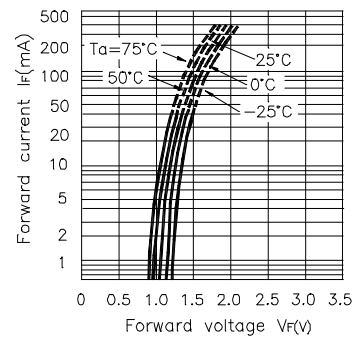


Fig. 3 Collector Current vs. Collector-emitter Voltage

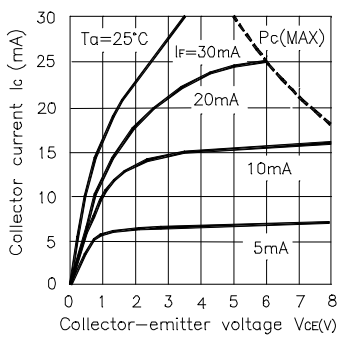


Fig. 4 Relative Current Transfer Ratio vs. Ambient Temperature

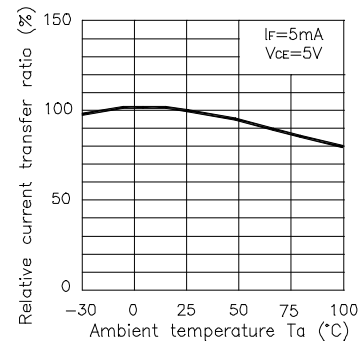


Fig. 5 Collector-emitter Saturation Voltage vs. Ambient Temperature

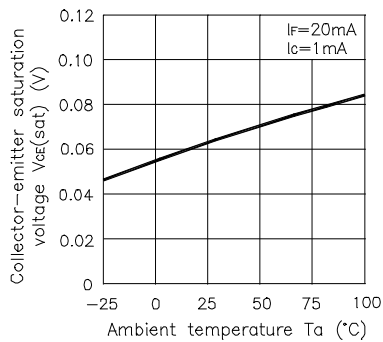


Fig. 6 Collector Dark Current vs. Ambient Temperature

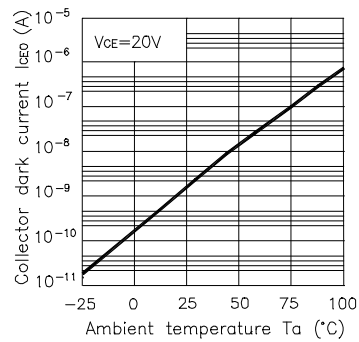


Fig. 7 Forward Current vs. Ambient Temperature

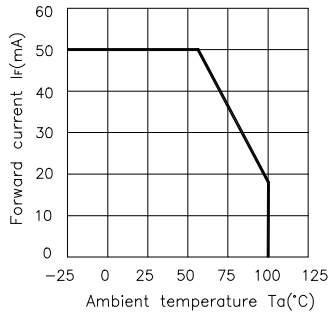


Fig. 8 Collector Power Dissipation vs. Ambient Temperature

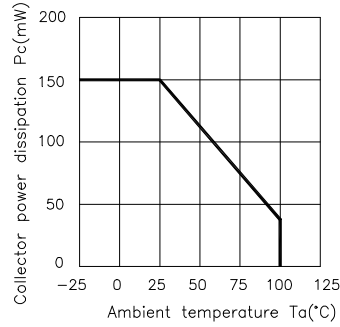
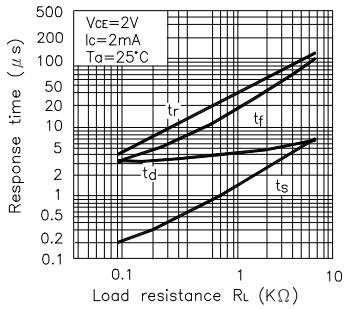


Fig. 9 Response Time vs. Load Resistance



Test Circuit for Response Time

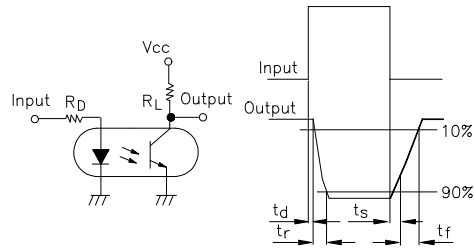
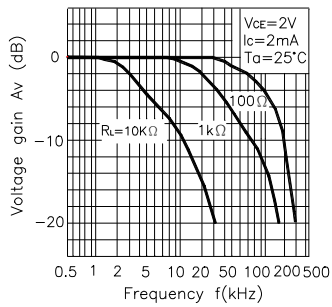


Fig. 10 Frequency Response



Test Circuit for Frequency Response

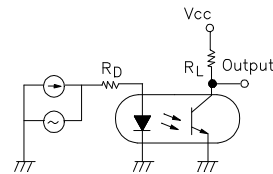
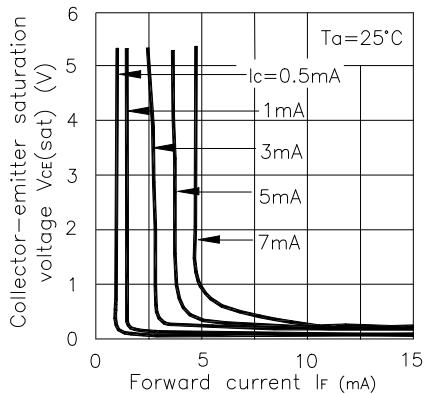


Fig. 11 Collector-emitter Saturation Voltage vs. Forward Current



*NOTES ON HANDLING

1.Recommended soldering conditions (Dip soldering)

(1) Dip soldering

Temperature	260 °C or below (molten solder temperature)
Time	Less than 10 seconds.
Cycle	One cycle allowed to be dipped in solder including plastic mold portion.
Flux	Rosin flux containing small amount of chorine (The flux with a maximum chlorine content of 0.2 Wt % is recommended.)

(2) Cautions

Fluxes
Aavoid removing the residual flux with freon-based and chlorine-based cleaning solvent.

2.Cautions regarding noise

Be aware that power is suddenly into the componment any surge current may cause damage happen, even if the voltage is within the absolute maximum ratings.

P/N: KB846

CAUTION

Within this device there exists GaAs (Gallium Arsenide) material which is a harmful substance if ingested. GaAs dust and fumes are toxic. Do not break, cut or pulverize the product, or use chemicals to dissolve them.

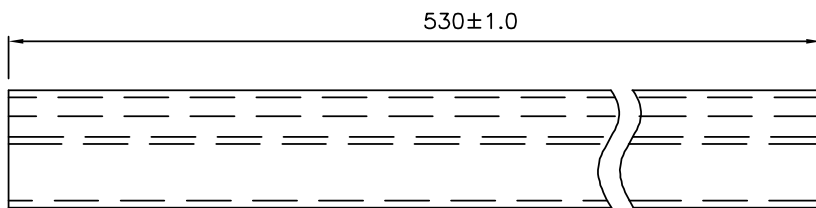
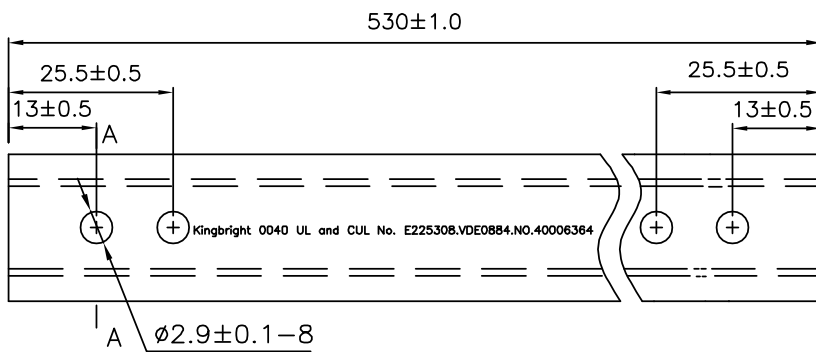
RESTRICTIONS ON PRODUCT USE

- The information in this document is subject to change without notice. Before using this document, please confirm that this is the latest version. Not all devices / types available in every country.
- We are mention about our product quality stability, semiconductor devices in general can malfunction or fail due to their inherent electrical sensitivity and vulnerability to physical stress. It is the responsibility of the buyer, when utilizing KINGBRIGHT products, to observe standards of safety, and to a avoid situations in which a malfunction or failure of a KINGBRIGHT product could cause loss of human life, bodily injury or damage to property. In developing your designs, please ensure that KINGBRIGHT products are used within specified operating ranges as set forth in the most recent products specifications.

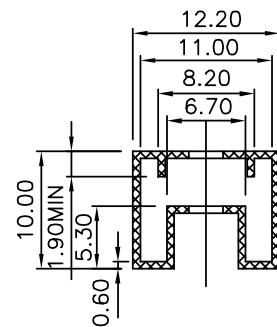
P/N: KB846

Dimension of Tube

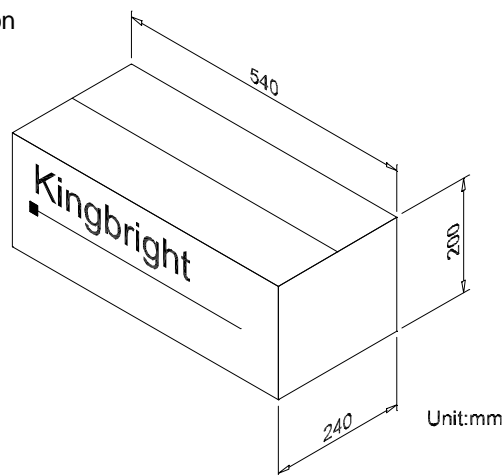
TOLERANCE : $\pm 0.4[\pm 0.012]$ UNLESS OTHERWISE NOTED.
Unit:mm



A-A Side view



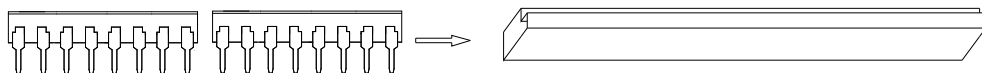
Dimension of Carton



Part Number	Package	Package Style
KB846	16-pin DIP	25pcs/each tube

P/N: KB846

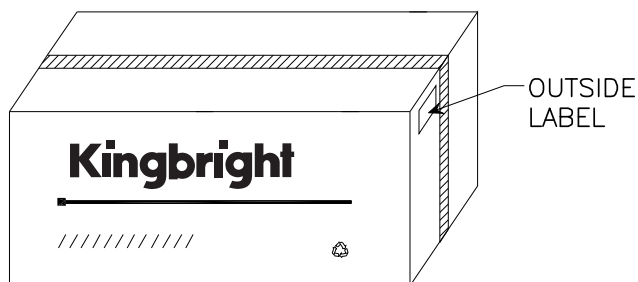
PACKING & LABEL SPECIFICATIONS



25PCS / IC TUBE



250pcs / 10pcs IC TUBE



7.5K / 10 # BOX

Kingbright	
Q.C.	
TYPE NO : KB846	
QUANTITY : 250 pcs	
S/N : XXX	CODE: XX
LOT NO:	
MADE IN CHINA	RoHS Compliant