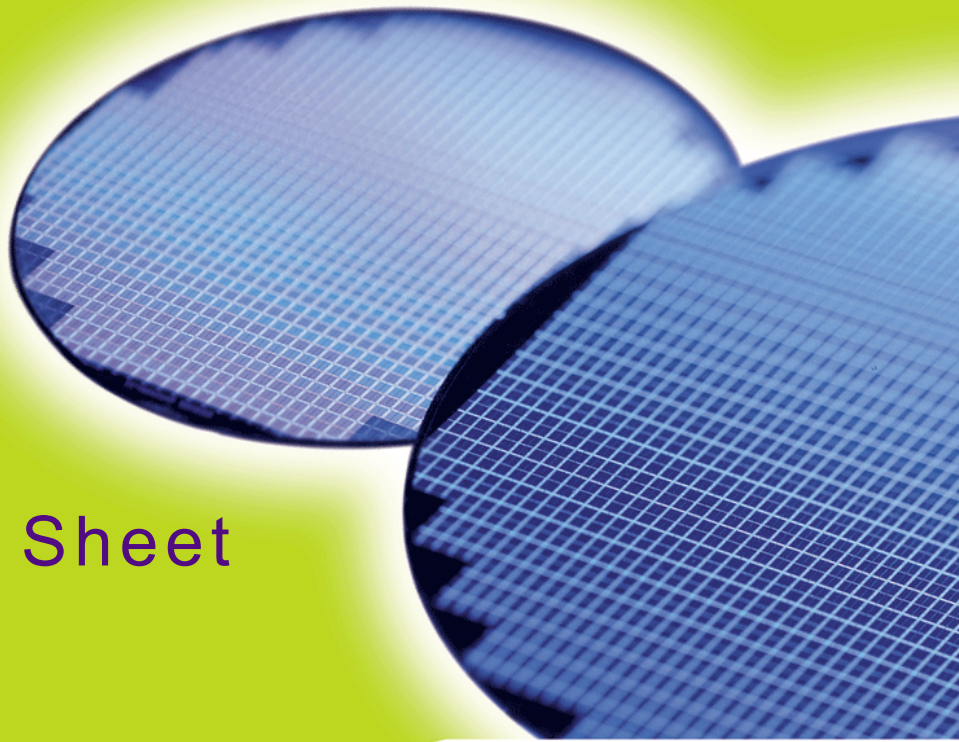


# HYB18H1G321AF-10/11/14

*GDDR3 Graphics RAM  
1-Gbit GDDR3 Graphics RAM  
RoHS compliant*



## Internet Data Sheet

*Rev. 0.92*



|   |   |
|---|---|
| <b>HYB18H1G321AF-10/11/14</b>                   |   |
| <b>Revision History: 2007-10, Rev. 0.92</b>     |   |
| <b>Page</b>                                     | <b>Subjects (major changes since last revision)</b> |
| All   | $t_{WR}$ changed from 14 to 13                      |
| 39  | $t_{RP}$ at Speed Bin -10 is changed from 13 to 14  |
| 36  | $I_{DD}$ Values were added.                         |
| <b>Previous Revision: Rev. 0.91, 2007-08-08</b> |   |
| All   | Typo changes.                                       |
| <b>Previous Revision: Rev. 0.80, 2007-07-10</b> |   |
| All   | Adapted internet edition                            |

**We Listen to Your Comments**

Any information within this document that you feel is wrong, unclear or missing at all?

Your feedback will help us to continuously improve the quality of this document.

Please send your proposal (including a reference to this document) to:

[techdoc@qimonda.com](mailto:techdoc@qimonda.com)



# 1 Overview

This chapter lists all main features of the product family HYB18H1G321AF–10/11/14 and the ordering information.

## 1.1 Features

- 1.8 V  $V_{DDQ}$  IO voltage
- 1.8 V  $V_{DD}$  core voltage
- Monolithic 1Gbit GDDR3 with an internally programmable organization of either two separate 512MBit memories (2048 K x 32 I/O x 8 banks) with separate Chip Select, or one 1Gb memory (4096 K x 32 I/O x 8 banks)
- Two CS: 4096 rows and 512 columns (128 burst start locations) per bank
  - One CS: 8192 rows and 512 columns (128 burst start locations) per bank
- Differential clock inputs (CLK and  $\overline{\text{CLK}}$ )
- CAS latencies of 7, 8, 9, 10, 11, 12, 13, 14, 15, 16, 17
- Write latencies of 3, 4, 5, 6, 7
- Burst sequence with length of 4, 8
- 4n pre fetch
- Short RAS to CAS timing for Writes
- $t_{RAS}$  Lockout support
- $t_{WR}$  programmable for Writes with Auto-Precharge
- Data mask for write commands
- Single ended READ strobe (RDQS) per byte. RDQS edge-aligned with READ data
- Single ended WRITE strobe (WDQS) per byte. WDQS center-aligned with WRITE data
- DLL aligns RDQS and DQ transitions with Clock
- Programmable IO interface including on chip termination (ODT)
- Autoprecharge option with concurrent auto precharge support
- 8k Refresh (32ms)
- Autorefresh and Self Refresh
- PG-TFBGA-136 package
- Calibrated output drive. Active termination support
- RoHS Compliant Product <sup>1)</sup>



**TABLE 1**  
Ordering Information

| Part Number <sup>1)</sup> | Organization | Clock (MHz) | Package      |
|---------------------------|--------------|-------------|--------------|
| HYB18H1G321AF–10/11/14    | x32          | 1000 @CL12  | PG-TFBGA-136 |
|                           |              | 700 @CL11   |              |
|                           |              | 900 @CL11   |              |

- 1) HYB: designator for memory components  
 18H: VDDQ = 1.8V  
 1G: 1 Gbit  
 32: x32 organization  
 A: Product Revision  
 F: Lead and Halogen-Free

1) RoHS Compliant Product: Restriction of the use of certain hazardous substances (RoHS) in electrical and electronic equipment as defined in the directive 2002/95/EC issued by the European Parliament and of the Council of 27 January 2003. These substances include mercury, lead, cadmium, hexavalent chromium, polybrominated biphenyls and polybrominated biphenyl ethers.



## 1.2 Description

The Qimonda 1-Gbit GDDR3 Graphics RAM is a high speed memory device, designed for high bandwidth intensive applications like PC graphics systems. The chip is programmable into two different configurations. In the default mode the architecture is organized as two 512 Mbit memories of 8 banks, each (two CS mode). In an alternate configuration, it behaves as a conventional, 8-bank 1 Gbit DRAM (one CS mode). Note that at 1000 MHz speed grade only one CS mode is supported. HYB18H1G321AF–10/11/14 uses a double data rate interface and a  $4n$ -pre fetch architecture. The GDDR3 interface transfers two 32 bit wide data words per clock cycle to/from the I/O pins. Corresponding to the  $4n$ -pre fetch a single write or read access consists of a 128 bit wide, one-clock-cycle data transfer at the internal memory core and four corresponding 32 bit wide, one-half-clock-cycle data transfers at the I/O pins.

Single-ended unidirectional Read and Write Data strobes are transmitted simultaneously with Read and Write data respectively in order to capture data properly at the receivers of both the Graphics SDRAM and the controller. Data strobes are organized per byte of the 32 bit wide interface. For read commands the RDQS are edge-aligned with data, and the WDQS are center-aligned with data for write commands.

The HYB18H1G321AF–10/11/14 operates from a differential clock (CLK and  $\overline{\text{CLK}}$ ). Commands (addresses and control signals) are registered at every positive edge of CLK. Input data is registered on both edges of WDQS, and output data is referenced to both edges of RDQS.

In this document references to “the positive edge of CLK” imply the crossing of the positive edge of CLK and the negative edge of  $\overline{\text{CLK}}$ . Similarly, the “negative edge of CLK” refers to the crossing of the negative edge of CLK and the positive edge of  $\overline{\text{CLK}}$ . References to RDQS are to be interpreted as any or all RDQS<3:0>. WDQS, DM and DQ should be interpreted in a similar fashion.

Read and write accesses to the HYB18H1G321AF–10/11/14 are burst oriented. The burst length is fixed to 4 and 8 and the two least significant bits of the burst address are “Don’t Care” and internally set to LOW. Accesses begin with the registration of an ACTIVATE command, which is then followed by a READ or WRITE command. The address bits registered coincident with the ACTIVATE command are used to select the bank and the row to be accessed. The address bits registered coincident with the READ or WRITE command are used to select the bank and the column location for the burst access. In two CS mode, each of the 2 x 8 banks consists of 4096 row locations and 512 column locations. In one CS mode, the number of row locations doubles to 8192 rows while the number of column location remains unchanged at 512 columns. An AUTO PRECHARGE function can be combined with READ and WRITE to provide a self-timed row precharge that is initiated at the end of the burst access. The pipe lined, multibank architecture of the HYB18H1G321AF–10/11/14 allows for concurrent operation, thereby providing high effective bandwidth by hiding row precharge and activation time.

The “On Die Termination” interface (ODT) is optimized for high frequency digital data transfers and is internally controlled. The termination resistor value can be set using an external ZQ resistor or disabled through the Extended Mode Register.

The output driver impedance can be set using the Extended Mode Register. It can either be set to ZQ / 6 (auto calibration) or to 35, 40 or 45 Ohms.

Auto Refresh and Power Down with Self Refresh operations are supported.

An industrial standard PG-TFBGA-136 package is used which enables ultra high speed data transfer rates and a simple upgrade path from former DDR Graphics SDRAM products.





**FIGURE 2**

**Ballout 1Gbit GDDR3 Graphics RAM in 2-CS mode in non Merged Mode(Top View; MF = Low)**

| 1         | 2         | 3                       | 4                       | 5 | 6 | 7 | 8 | 9                       | 10                     | 11        | 12        |
|-----------|-----------|-------------------------|-------------------------|---|---|---|---|-------------------------|------------------------|-----------|-----------|
| $V_{DDQ}$ | $V_{DD}$  | $V_{SS}$                | ZQ                      |   |   |   |   | MF                      | $V_{SS}$               | $V_{DD}$  | $V_{DDQ}$ |
| $V_{SSQ}$ | DQ0       | DQ1                     | $V_{SSQ}$               |   |   |   |   | $V_{SSQ}$               | DQ9                    | DQ8       | $V_{SSQ}$ |
| $V_{DDQ}$ | DQ2       | DQ3                     | $V_{DDQ}$               |   |   |   |   | $V_{DDQ}$               | DQ11                   | DQ10      | $V_{DDQ}$ |
| $V_{SSQ}$ | WDQS0     | RDQS0                   | $V_{SSQ}$               |   |   |   |   | $V_{SSQ}$               | RDQS1                  | WDQS1     | $V_{SSQ}$ |
| $V_{DDQ}$ | DQ4       | DM0                     | $V_{DDQ}$               |   |   |   |   | $V_{DDQ}$               | DM1                    | DQ12      | $V_{DDQ}$ |
| $V_{DD}$  | DQ6       | DQ5                     | $\overline{\text{CAS}}$ |   |   |   |   | $\overline{\text{CS0}}$ | DQ13                   | DQ14      | $V_{DD}$  |
| $V_{SS}$  | $V_{SSQ}$ | DQ7                     | BA0                     |   |   |   |   | BA1                     | DQ15                   | $V_{SSQ}$ | $V_{SS}$  |
| $V_{REF}$ | A1        | $\overline{\text{RAS}}$ | CKE                     |   |   |   |   | $\overline{\text{WE}}$  | BA2                    | A5        | $V_{REF}$ |
| $V_{SS}$  | RAR       | $\overline{\text{CS1}}$ | $V_{DDQ}$               |   |   |   |   | $V_{DDQ}$               | $\overline{\text{CK}}$ | CK        | $V_{SS}$  |
| $V_{DD}$  | A10       | A2                      | A0                      |   |   |   |   | A4                      | A6                     | A8/AP     | $V_{DD}$  |
| $V_{SS}$  | $V_{SSQ}$ | DQ25                    | A11                     |   |   |   |   | A7                      | DQ17                   | $V_{SSQ}$ | $V_{SS}$  |
| $V_{DD}$  | DQ24      | DQ27                    | A3                      |   |   |   |   | A9                      | DQ19                   | DQ16      | $V_{DD}$  |
| $V_{DDQ}$ | DQ26      | DM3                     | $V_{DDQ}$               |   |   |   |   | $V_{DDQ}$               | DM2                    | DQ18      | $V_{DDQ}$ |
| $V_{SSQ}$ | WDQS3     | RDQS3                   | $V_{SSQ}$               |   |   |   |   | $V_{SSQ}$               | RDQS2                  | WDQS2     | $V_{SSQ}$ |
| $V_{DDQ}$ | DQ28      | DQ29                    | $V_{DDQ}$               |   |   |   |   | $V_{DDQ}$               | DQ21                   | DQ20      | $V_{DDQ}$ |
| $V_{SSQ}$ | DQ30      | DQ31                    | $V_{SSQ}$               |   |   |   |   | $V_{SSQ}$               | DQ23                   | DQ22      | $V_{SSQ}$ |
| $V_{DDQ}$ | $V_{DD}$  | $V_{SS}$                | SEN                     |   |   |   |   | RESET                   | $V_{SS}$               | $V_{DD}$  | $V_{DDQ}$ |



**FIGURE 3**

**Ballout 1Gbit GDDR3 Graphics RAM in Merged Mode**

| 1         | 2         | 3                       | 4                       | 5 | 6 | 7 | 8 | 9                       | 10                     | 11        | 12        |
|-----------|-----------|-------------------------|-------------------------|---|---|---|---|-------------------------|------------------------|-----------|-----------|
| $V_{DDQ}$ | $V_{DD}$  | $V_{SS}$                | ZQ                      |   |   |   |   | MF                      | $V_{SS}$               | $V_{DD}$  | $V_{DDQ}$ |
| $V_{SSQ}$ | DQ0       | DQ1                     | $V_{SSQ}$               |   |   |   |   | $V_{SSQ}$               | DQ9                    | DQ8       | $V_{SSQ}$ |
| $V_{DDQ}$ | DQ2       | DQ3                     | $V_{DDQ}$               |   |   |   |   | $V_{DDQ}$               | DQ11                   | DQ10      | $V_{DDQ}$ |
| $V_{SSQ}$ | WDQS0     | RDQS0                   | $V_{SSQ}$               |   |   |   |   | $V_{SSQ}$               | RDQS1                  | WDQS1     | $V_{SSQ}$ |
| $V_{DDQ}$ | DQ4       | DM0                     | $V_{DDQ}$               |   |   |   |   | $V_{DDQ}$               | DM1                    | DQ12      | $V_{DDQ}$ |
| $V_{DD}$  | DQ6       | DQ5                     | $\overline{\text{CAS}}$ |   |   |   |   | $\overline{\text{CS0}}$ | DQ13                   | DQ14      | $V_{DD}$  |
| $V_{SS}$  | $V_{SSQ}$ | DQ7                     | BA0                     |   |   |   |   | BA1                     | DQ15                   | $V_{SSQ}$ | $V_{SS}$  |
| $V_{REF}$ | A1        | $\overline{\text{RAS}}$ | CKE                     |   |   |   |   | $\overline{\text{WE}}$  | BA2                    | A5        | $V_{REF}$ |
| $V_{SS}$  | RFU       | A12/<br>CS1             | $V_{DDQ}$               |   |   |   |   | $V_{DDQ}$               | $\overline{\text{CK}}$ | CK        | $V_{SS}$  |
| $V_{DD}$  | A10       | A2                      | A0                      |   |   |   |   | A4                      | A6                     | A8/AP     | $V_{DD}$  |
| $V_{SS}$  | $V_{SSQ}$ | DQ25                    | A11                     |   |   |   |   | A7                      | DQ17                   | $V_{SSQ}$ | $V_{SS}$  |
| $V_{DD}$  | DQ24      | DQ27                    | A3                      |   |   |   |   | A9                      | DQ19                   | DQ16      | $V_{DD}$  |
| $V_{DDQ}$ | DQ26      | DM3                     | $V_{DDQ}$               |   |   |   |   | $V_{DDQ}$               | DM2                    | DQ18      | $V_{DDQ}$ |
| $V_{SSQ}$ | WDQS3     | RDQS3                   | $V_{SSQ}$               |   |   |   |   | $V_{SSQ}$               | RDQS2                  | WDQS2     | $V_{SSQ}$ |
| $V_{DDQ}$ | DQ28      | DQ29                    | $V_{DDQ}$               |   |   |   |   | $V_{DDQ}$               | DQ21                   | DQ20      | $V_{DDQ}$ |
| $V_{SSQ}$ | DQ30      | DQ31                    | $V_{SSQ}$               |   |   |   |   | $V_{SSQ}$               | DQ23                   | DQ22      | $V_{SSQ}$ |
| $V_{DDQ}$ | $V_{DD}$  | $V_{SS}$                | SEN                     |   |   |   |   | RESET                   | $V_{SS}$               | $V_{DD}$  | $V_{DDQ}$ |

Ballout\_1\_Gbit\_GDDR3\_merged\_mode.vsd



## 2.1 Ball Definition and Description

**TABLE 2**  
**Ball Description**

| Ball  | Type   | Detailed Function  |
|---|--------|--|
| CLK, $\overline{\text{CLK}}$  | Input  | <b>Clock:</b><br>CLK and $\overline{\text{CLK}}$ are differential clock inputs. Address and command inputs are latched on the positive edge of CLK. Graphics SDRAM outputs (RDQS, DQs) are referenced to CLK. CLK and $\overline{\text{CLK}}$ are not internally terminated.   |
| CKE   | Input  | <b>Clock Enable:</b><br>CKE HIGH activates and CKE LOW deactivates the internal clock and input buffers. Taking CKE LOW provides Power Down. If all banks are precharged, this mode is called Precharge Power Down and Self Refresh mode is entered if a Auto Refresh command is issued. If at least one bank is open, Active Power Down mode is entered and no Self Refresh is allowed. All input receivers except CLK, $\overline{\text{CLK}}$ and CKE are disabled during Power Down. In Self Refresh mode the clock receivers are disabled too. Self Refresh Exit is performed by setting CKE asynchronously HIGH. Exit of Power Down without Self Refresh is accomplished by setting CKE HIGH with a positive edge of CLK. The value of CKE is latched asynchronously by Reset during Power On to determine the value of the termination resistor of the address and command inputs. CKE is not allowed to go LOW during a RD, a WR or a snoop burst. |
| $\overline{\text{CS0}}$   | Input  | <b>Chip Select:</b><br>$\overline{\text{CS0}}$ enables the command decoder when low and disables it when high. When the command decoder is disabled, new commands with the exception of DTERDIS are ignored, but internal operations continue. In 2-CS mode, $\overline{\text{CS0}}$ is exclusively used for MRS, EMRS and SREFEN.   |
| $\overline{\text{CS1}}$   | Input  | <b>Chip Select:</b><br>$\overline{\text{CS1}}$ is only evaluated in 2-CS mode, and it is used as the chip-select signal for the second memory block.   |
| $\overline{\text{RAS}}$ , $\overline{\text{CAS}}$ ,<br>$\overline{\text{WE}}$ | Input  | <b>Command Inputs:</b><br>Sampled at the positive edge of CLK, $\overline{\text{CAS}}$ , $\overline{\text{RAS}}$ , and $\overline{\text{WE}}$ define (together with corresponding $\overline{\text{CS}}$ ) the command to be executed.   |
| DQ<0:31>  | I/O    | <b>Data Input/Output:</b><br>The DQ signals form the 32 bit data bus. During READs the balls are outputs and during WRITEs they are inputs. Data is transferred at both edges of RDQS.   |
| DM<0:3>   | Input  | <b>Input Data Mask:</b><br>The DM signals are input mask signals for WRITE data. Data is masked when DM is sampled HIGH with the WRITE data. DM is sampled on both edges of WDQS. DM0 is for DQ<0:7>, DM1 is for DQ<8:15>, DM2 is for DQ<16:23> and DM3 is for DQ<24:31>. Although DM balls are input-only, their loading is designed to match the DQ and WDQS balls.  |
| RDQS<0:3>   | Output | <b>Read Data Strobes:</b><br>RDQSx are unidirectional strobe signals. During READs the RDQSx are transmitted by the Graphics SDRAM and edge-aligned with data. RDQS have preamble and postamble requirements. RDQS0 is for DQ<0:7>, RDQS1 for DQ<8:15>, RDQS2 for DQ<16:23> and RDQS3 for DQ<24:31>.   |
| WDQS<0:3>   | Input  | <b>Write Data Strobes:</b> WDQSx are unidirectional strobe signals. During WRITEs the WDQSx are generated by the controller and center aligned with data. WDQS have preamble and postamble requirements. WDQS0 is for DQ<0:7>, WDQS1 for DQ<8:15>, WDQS2 for DQ<16:23> and WDQS3 for DQ<24:31>.  |





| Ball                  | Type   | Detailed Function   |
|-----------------------|--------|---|
| BA<0:2>               | Input  | <b>Bank Address Inputs:</b><br>BA select to which internal bank an ACTIVATE, READ, WRITE or PRECHARGE command is being applied. BA are also used to distinguish between the MODE REGISTER SET and EXTENDED MODE REGISTER SET commands.  |
| A<0:11>               | Input  | <b>Address Inputs:</b><br>During ACTIVATE, A0-A11 defines the row address. For READ/WRITE, A2-A7 and A9 defines the column address, and A8 defines the auto precharge bit. If A8 is HIGH, the accessed bank is precharged after execution of the column access. If A8 is LOW, AUTO PRECHARGE is disabled and the bank remains active. Sampled with PRECHARGE, A8 determines whether one bank is precharged (selected by BA<0:2>, A8 LOW) or all 8 banks are precharged (A8 HIGH). During (EXTENDED) MODE REGISTER SET the address inputs define the register settings. A<0:11> are sampled with the positive edge of CLK. |
| A<12>                 | Input  | <b>Address Inputs:</b><br>A12 define the MSB of the row address during an ACTIVATE in 1-CS mode.  |
| ZQ                    | -      | <b>ODT Impedance Reference:</b><br>The ZQ ball is used to control the ODT impedance.  |
| RESET                 | Input  | <b>Reset pin:</b><br>The RES pin is a $V_{DDQ}$ CMOS input. RES is not internally terminated. When RES is at LOW state the chip goes into full reset. The chip stays in full reset until RES goes to HIGH state. The Low to High transition of the RES signal is used to latch the CKE value to set the value of the termination resistors of the address and command inputs. After exiting the full reset a complete initialization is required since the full reset sets the internal settings to default.  |
| MF                    | Input  | <b>Mirror function pin:</b><br>The MF pin is a $V_{DDQ}$ CMOS input. This pin must be hardwired on board either to a power or to a ground plane. With MF set to HIGH, the command and address pins are reassigned in order to allow for an easier routing on board for a back to back memory arrangement.   |
| SEN                   | Input  | <b>Enables Boundary Scan Functionality:</b><br>If Boundary Scan is not used PIN should be constantly connected to GND.  |
| $V_{REF}$             | Supply | <b>Voltage Reference:</b><br>$V_{REF}$ is the reference voltage input.  |
| $V_{DD}$ , $V_{SS}$   | Supply | <b>Power Supply:</b><br>Power and Ground for the internal logic.  |
| $V_{DDQ}$ , $V_{SSQ}$ | Supply | <b>I/O Power Supply:</b><br>Isolated Power and Ground for the output buffers to provide improved noise immunity.  |
| NC, RFU               | -      | Please do not connect No Connect and Reserved for Future Use balls.   |
| RAR                   |        | Reserved for Alternate Rank   |

## 2.2 Mirror Function

The GDDR3 Graphics RAM provides a ball mirroring feature that is enabled by applying a logic HIGH on ball MF. This function allows for efficient routing in a clam shell configuration.

Depending of the logic state applied on MF, the command and address signals will be assigned to different balls. The default ball configuration (see **Figure 2**) corresponds to MF = LOW. The CS1 and A12 balls are not mirrored.

The DC level (HIGH or LOW) must be applied on the MF pin at power up and is not allowed to change after that.

**Table 3** shows the ball assignment as a function of the logic state applied on MF.

**TABLE 3**  
Ball Assignment with Mirror

| MF Logic State |      | Signal                  |
|----------------|------|-------------------------|
| LOW            | HIGH |                         |
| H3             | H10  | $\overline{\text{RAS}}$ |
| F4             | F9   | $\overline{\text{CAS}}$ |
| H9             | H4   | $\overline{\text{WE}}$  |
| F9             | F4   | CS0                     |
| H4             | H9   | CKE                     |
| K4             | K9   | A0                      |
| H2             | H11  | A1                      |
| K3             | K10  | A2                      |
| M4             | M9   | A3                      |
| K9             | K4   | A4                      |
| H11            | H2   | A5                      |
| K10            | K3   | A6                      |
| L9             | L4   | A7                      |
| K11            | K2   | A8                      |
| M9             | M4   | A9                      |
| K2             | K11  | A10                     |
| L4             | L9   | A11                     |
| G4             | G9   | BA0                     |
| G9             | G4   | BA1                     |
| H10            | H3   | BA2                     |



## 2.3 Truth Tables

### 2.3.1 Function Truth Table for more than one Activated Bank

If there is more than one bank activated in the Graphics SDRAM, some commands can be performed in parallel due to the chip's multibank architecture. The following table defines for which commands such a scheme is possible. All other transitions are illegal. Notes 1-11 define the start and end of the actions belonging to a submitted command. This table is based on the assumption that there are no other actions ongoing on bank n or bank m. If there are any actions ongoing on a third bank  $t_{RRD}$ ,  $t_{RTW}$  and  $t_{WTR}$  have to be taken always into account.

**TABLE 4**  
Function Truth Table I

| Current State | Ongoing action on bank n               | Possible action in parallel on bank m                 |
|---------------|--|---|
| ACTIVE        | ACTIVATE <sup>1)</sup>                 | ACT, PRE, WRITE, WRITE/A, READ, READ/A <sup>2)</sup>  |
|               | WRITE <sup>3)</sup>                    | ACT, PRE, WRITE, WRITE/A, READ, READ/A <sup>4)</sup>  |
|               | WRITE/A <sup>5)</sup>                  | ACT, PRE, WRITE, WRITE/A, READ <sup>6)</sup>          |
|               | READ <sup>7)</sup>                     | ACT, PRE, WRITE, WRITE/A, READ, READ/A <sup>8)</sup>  |
|               | READ/A <sup>9)</sup>                   | ACT, PRE, WRITE, WRITE/A, READ, READ/A <sup>8)</sup>  |
|               | PRECHARGE <sup>10)</sup>               | ACT, PRE, WRITE, WRITE/A, READ, READ/A <sup>11)</sup> |
|               | PRECHARGE ALL <sup>10)</sup>           | -   |
|               | POWER DOWN ENTRY <sup>12)</sup>        | -   |
| IDLE          | ACTIVATE 1)                            | ACT   |
|               | POWER DOWN ENTRY <sup>12)</sup>        | -   |
|               | AUTO REFRESH <sup>13)</sup>            | -   |
|               | SELF REFRESH ENTRY <sup>12)</sup>      | -   |
|               | MODE REGISTER SET (MRS) <sup>14)</sup> | -   |
|               | EXTENDED MRS <sup>14)</sup>            | -   |
|               | EXTENDED MRS 2 <sup>14)</sup>          | -   |
| POWER DOWN    | POWER DOWN EXIT <sup>15)</sup>         | -   |
| SELF REFRESH  | SELF REFRESH EXIT <sup>16)</sup>       | -   |

- 1) Action ACTIVATE starts with issuing the command and ends after  $t_{RCD}$ .
- 2) During action ACTIVATE an ACT command on another bank is allowed considering  $t_{RRD}$  or  $t_{RRD\_RR}$ , a PRE command on another bank is allowed any time. WR, WR/A, RD and RD/A are always allowed.
- 3) Action WRITE starts with issuing the command and ends  $t_{WR}$  after the first pos. edge of CLK following the last falling WDQS edge.
- 4) During action WRITE an ACT or a PRE command on another bank is allowed any time. A new WR or WR/A command on another bank must be separated by at least one NOP from the ongoing WRITE. RD or RD/A are not allowed before  $t_{WTR}$  or  $t_{WTR\_RR}$  is met.
- 5) Action WRITE/A starts with issuing the command and ends  $t_{WR}$  after the first positive edge of CLK following the last falling WDQS edge.
- 6) During action WRITE/A an ACT or a PRE command on another bank is allowed any time. A new WR or WR/A command on another bank has to be separated by at least one NOP from the ongoing command. RD is not allowed before or  $t_{WTR}$  or  $t_{WTR\_RR}$  is met. RD/A is not allowed during an ongoing WRITE/A action.
- 7) Action READ starts with issuing the command and ends with the first positive edge of CLK following the last falling edge of RDQS.
- 8) During action READ and READ/A an ACT or a PRE command on another bank is allowed any time. A new RD or RD/A command on another bank has to be separated by at least one NOP from the ongoing command. A WR or WR/A command on another bank has to meet  $t_{RTW}$ .
- 9) Action READ/A starts with issuing the command and ends with the first positive edge of CLK following the last falling edge of RDQS.



- 10) Action PRECHARGE and PRECHARGE ALL start with issuing the command and ends after  $t_{RP}$ .
- 11) During Action ACTIVE an ACT command on another banks is allowed considering  $t_{RRD}$  or  $t_{RRD\_RR}$ . A PRE command on another bank is allowed any time. WR, WR/A, RD and RD/A are always allowed.
- 12) During POWER DOWN and SELF REFRESH only the EXIT commands are allowed.
- 13) AUTO REFRESH starts with issuing the command and ends after  $t_{RFC}$ .
- 14) Actions MODE REGISTER SET, EXTENDED MODE REGISTER SET and EXTENDED MODE REGISTER 2 SET start with issuing the command and ends after  $t_{MRD}$ .
- 15) Action POWER DOWN EXIT starts with issuing the command and ends after  $t_{XPN}$ .
- 16) Action SELF REFRESH EXIT starts with issuing the command and ends after  $t_{XSC}$ .

## 2.4 Function Truth Table for CKE

**TABLE 5**  
Function Truth Table II (CKE Table)

| CKE N-1 | CKE n | CURRENT STATE  | COMMAND      | ACTION                         |
|---------|-------|----------------|--------------|--------------------------------|
| L       | L     | Power Down     | X            | Stay in Power Down             |
|         |       | Self Refresh   | X            | Stay in Self Refresh           |
| L       | H     | Power Down     | DESEL or NOP | Exit Power Down                |
|         |       | Self Refresh   | DESEL or NOP | Exit Self Refresh <sup>5</sup> |
| H       | L     | All Banks Idle | DESEL or NOP | Entry Precharge Power Down     |
|         |       | Bank(s) Active | DESEL or NOP | Entry Active Power Down        |
|         |       | All Banks Idle | Auto Refresh | Entry Self Refresh             |

### Notes

1.  $CKE_n$  is the logic step at clock edge  $n$ ;  $CKE_{n-1}$  was the state of CKE at the previous clock edge.
2. Current state is the state of the GDDR3 Graphics RAM immediately prior to clock edge  $n$ .
3. COMMAND is the command registered at clock edge  $n$ , and ACTION is a result of COMMAND.
4. All states and sequences not shown are illegal or reserved.
5. DESEL or NOP commands should be issued on any clock edges occurring during the  $t_{XSR}$  period. A minimum of 1000 clock cycles is required before applying any other valid command.



## 3 Boundary Scan

### 3.1 General Description

The 1-Gbit GDDR3 incorporates a modified boundary scan test mode. This mode doesn't operate in accordance with IEEE Standard 1149.1-1990. To save the current GDDR3 ball-out, this mode will scan the parallel data input and output the scanned data through the WDQS0 pin controlled by SEN.

*Note: Both pads bCS1 and A12 will be activated and could be accessed during Boundary Scan.*

### 3.2 Disabling the scan feature

It is possible to operate the 1-Gbit GDDR3 without using the boundary scan feature. SEN (at U-4 of 136-ball package) should be tied LOW(VSS) to prevent the device from entering the boundary scan mode. The other pins which are used for scan mode, RES, MF, WDQS0 and  $\overline{CS}$  will be operating at normal GDDR3 functionalities when SEN is deasserted.

**TABLE 6**  
Boundary Scan Exit Order

| BIT# | BALL | BIT# | BALL | BIT# | BALL | BIT# | BALL | BIT# | BALL | BIT# | BALL |
|------|------|------|------|------|------|------|------|------|------|------|------|
| 1    | D-3  | 13   | E-10 | 25   | K-11 | 37   | R-10 | 49   | L-3  | 61   | G-4  |
| 2    | C-2  | 14   | F-10 | 26   | K-10 | 38   | T-11 | 50   | M-2  | 62   | F-4  |
| 3    | C-3  | 15   | E-11 | 27   | K-9  | 39   | T-10 | 51   | M-4  | 63   | F-2  |
| 4    | B-2  | 16   | G-10 | 28   | M-9  | 40   | T-3  | 52   | K-4  | 64   | G-3  |
| 5    | B-3  | 17   | F-11 | 29   | M-11 | 41   | T-2  | 53   | K-3  | 65   | E-2  |
| 6    | A-4  | 18   | G-9  | 30   | L-10 | 42   | R-3  | 54   | K-2  | 66   | F-3  |
| 7    | B-10 | 19   | H-9  | 31   | N-11 | 43   | R-2  | 55   | L-4  | 67   | E-3  |
| 8    | B-11 | 20   | H-10 | 32   | M-10 | 44   | P-3  | 56   | J-3  |      |      |
| 9    | C-10 | 21   | H-11 | 33   | N-10 | 45   | P-2  | 57   | J-2  |      |      |
| 10   | C-11 | 22   | J-11 | 34   | P-11 | 46   | N-3  | 58   | H-2  |      |      |
| 11   | D-10 | 23   | J-10 | 35   | P-10 | 47   | M-3  | 59   | H-3  |      |      |
| 12   | D-11 | 24   | L-9  | 36   | R-11 | 48   | N-2  | 60   | H-4  |      |      |

#### Notes

1. When the device is in scan mode, the mirror function will be disabled and none of the pins are remapped.
2. Since the other input of the MUX for DM0 tied to GND, the device will output the continuous zeros after scanning a bit #67, if the chip stays in scan shift mode.
3. An unconnected CS1 and A12 on the board will be read as undefined.

**TABLE 7**  
Scan Pin Description

| PACKAGE BALL | SYMBOL                  | NORMAL FUNCTION        | TYPE   | DESCRIPTION   |
|--------------|-------------------------|------------------------|--------|---|
| V-9          | SSH                     | RES                    | Input  | <b>Scan Shift:</b> Capture the data input from the pad at logic LOW and shift the data on the chain at logic HIGH.  |
| F-9          | SCK                     | $\overline{\text{CS}}$ | Input  | <b>Scan Clock:</b> Not a true clock, could be a single pulse or series of pulses. All scan inputs will be referenced to rising edge of the scan clock   |
| D-2          | SOUT                    | WDQS0                  | Output | <b>Scan Output</b>  |
| V-4          | SEN                     | SEN                    | Input  | <b>Scan Enable:</b> Logic HIGH enables the device into scan mode and will be disabled at logic LOW. Must be tied to GND when not in use.  |
| A-9          | $\overline{\text{SOE}}$ | MF                     | Input  | <b>Scan Output Enable:</b> Enables (registered LOW) and disables (registered HIGH) SOUT data. This pin will be tied to $V_{DD}$ or GND through a resistor (typically 1K $\Omega$ for normal operation. Tester needs to overdrive this pin to guarantee the required input logic level in scan mode. |

**Notes**

1. When SEN is asserted, no commands are to be executed by the GDDR3. This applies both to user commands and manufacturing commands which may exist while RES is deasserted.
2. The Scan Function can be used right after bringing up  $V_{DD} / V_{DDQ}$  of the device. No initialization sequence of the device is required. After leaving the Scan Function it is required to run through the complete initialization sequence.
3. In Scan Mode all terminations for CMD/ADD and DQ, DM, RDQS and WDQS are switched off.
4. In a double-load clam-shell configuration, SEN will be asserted to both devices. Separate two  $\overline{\text{SOE}}$ 's should be provided to top and bottom devices to access the scanned output. When either of the devices is in scan mode,  $\overline{\text{SOE}}$  for the other device which is not in a scan will be disabled.

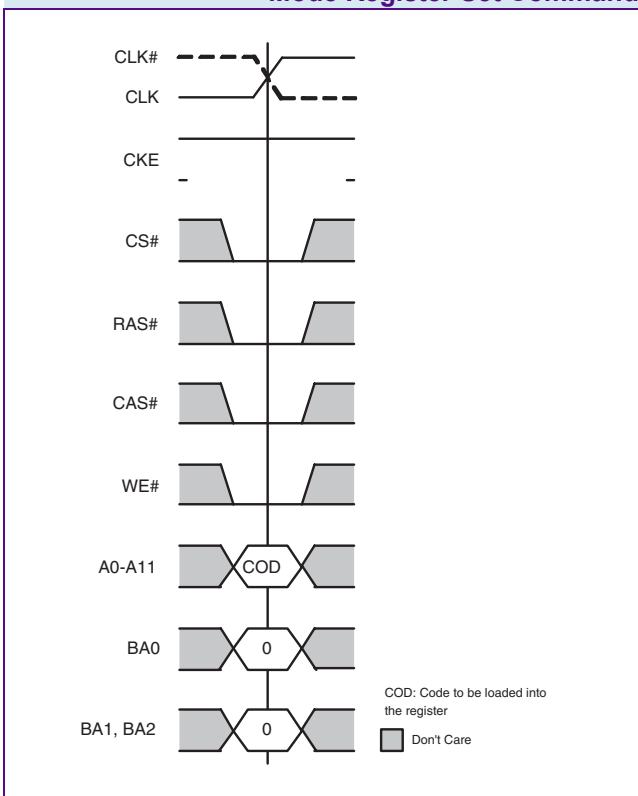


# 4 Functional Description

## 4.1 Mode Register Set Command (MRS)

**FIGURE 4**

**Mode Register Set Command**



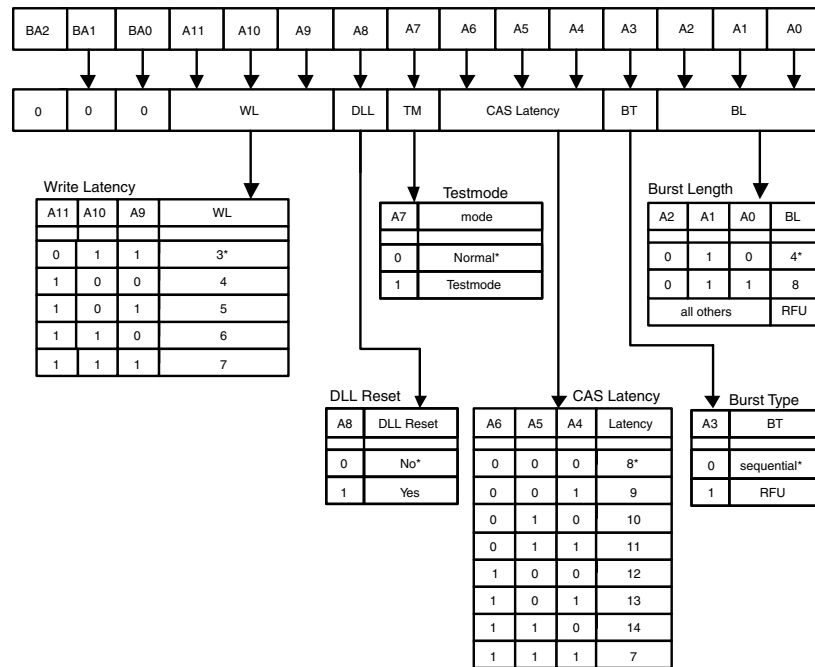
The Mode Register stores the data for controlling the operation modes of the memory. It programs CAS latency, test mode, DLL Reset, the value of the Write Latency and the Burst length. The Mode Register must be written after power up to operate the SGRAM. During a Mode Register Set command the address inputs are sampled and stored in the Mode Register. The Mode Register content can only be set or changed when the chip is in Idle state. For non-READ commands following a Mode Register Set a delay of  $t_{MRD}$  must be met.

To apply an MRS command, CS0 has to be used.

The Mode Register Bitmap is supported in two configurations. The first configuration is intended to support the Mid-Range-Speed application. The second configuration supports higher clock cycles for CAS latency and is therefore prepared to support high-speed application. The selected configuration is defined by Bit0 of EMRS2.



**FIGURE 5**  
**Mode Register Bitmap for Mid-Range-Speed Application**



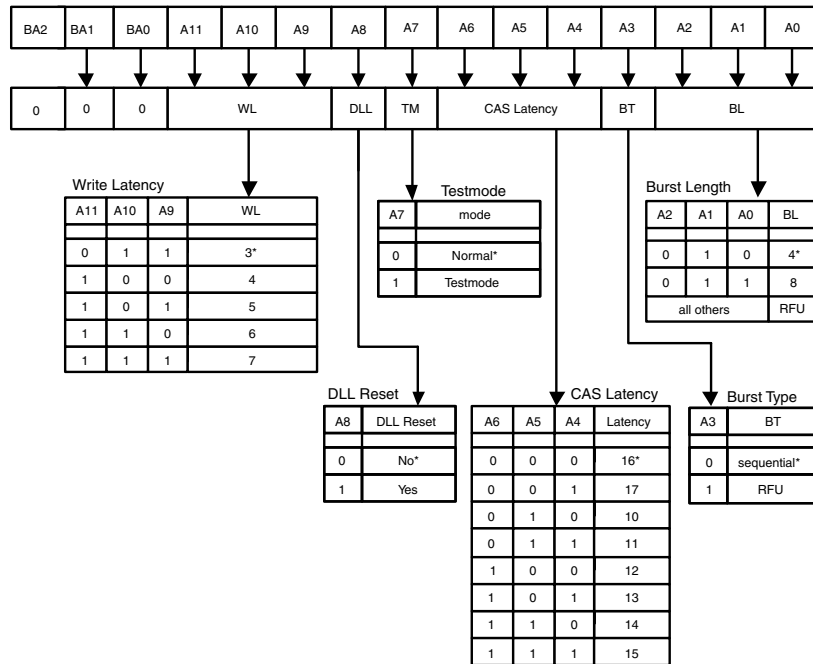
Note: 1) The DLL Reset command is self-clearing  
\* Defaults Settings





**FIGURE 6**

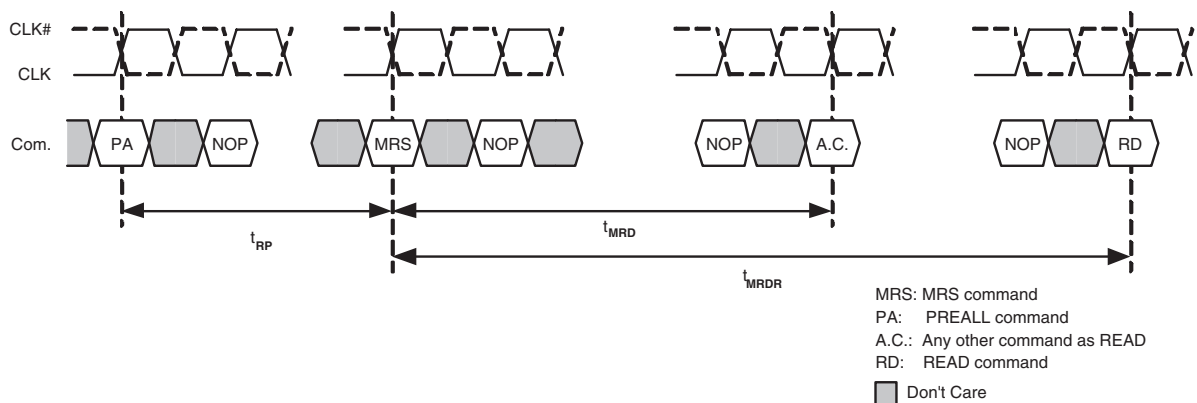
**Mode Register Bitmap for High-Speed Application**



Note: 1) The DLL Reset command is self-clearing  
\* Defaults Settings

**FIGURE 7**

**Mode Register Set Timing**





### 4.1.1 Burst length

Read and Write accesses to the GDDR3 Graphics RAM are burst oriented with burst length of 4 and 8. This value must be programmed using the Mode Register Set command (A0 .. A2). The burst length determines the number of column locations that can be accessed for a given READ or WRITE command.

When a READ or WRITE command is issued, a block of columns equal to the burst length is effectively selected. All accesses for that burst take place within this block if a boundary is reached. The starting location within this block is determined by the two least significant bits A0 and A1 which are set internally to the fixed value of zero each. Reserved states should not be used, as unknown operation or incompatibility with future versions may result.

### 4.1.2 Burst type

Accesses within a given bank must be programmed to be sequential. This is done using the Mode Register Set command (A3). This device does not support the burst interleave mode.

**TABLE 8**  
Burst Definition

| Burst Length | Starting Column Address |    |    | Order of Accesses within a Burst<br>(Type = sequential) |
|--------------|-------------------------|----|----|---|
|              | A2                      | A1 | A0 |   |
| 4            | —                       | X  | X  | 0-1-2-3   |
| 8            | 0                       | X  | X  | 0-1-2-3-4-5-6-7   |
|              | 1                       | X  | X  | 4-5-6-7-0-1-2-3   |

The value applied at the balls A0 and A1 for the column address is “Don’t care”.

### 4.1.3 CAS Latency

The CAS latency is the delay, in clock cycles, between the registration of a READ command and the availability of the first bit of output data.

If a READ command is registered at clock edge n, and the latency is m clocks, the data will be available nominally coincident with clock edge n+m.

Reserved states should not be used as unknown operation or incompatibility with future versions may result.

### 4.1.4 Write Latency

The WRITE latency, WL, is the delay, in clock cycles, between the registration of a WRITE command and the availability of the first bit of input data.

### 4.1.5 Test mode

The normal operating mode is selected by issuing a Mode Register Set command with bit A7 set to zero and bits A0-A6 and A8-A11 set to the desired value.



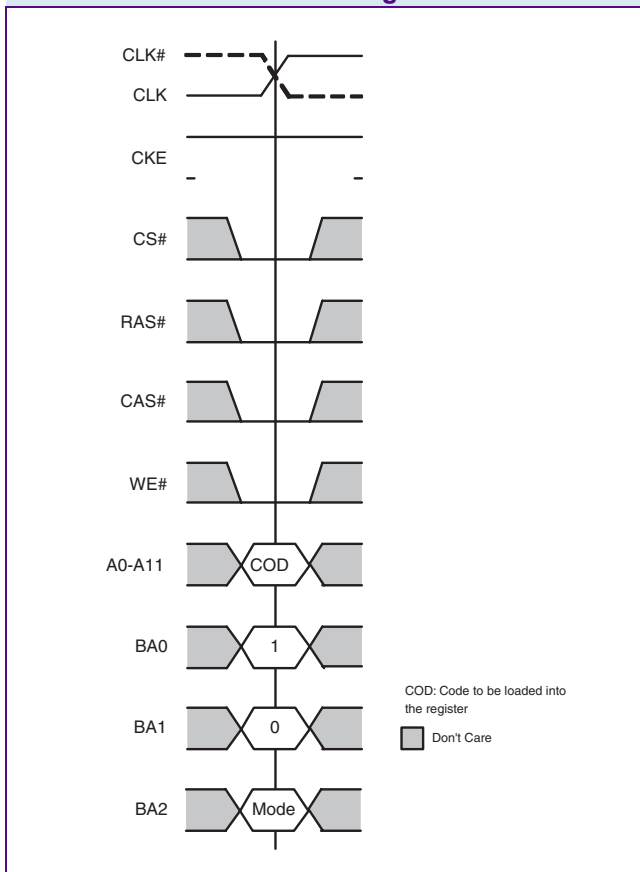
## 4.1.6 DLL Reset

The normal operating mode is selected by issuing a Mode Register Set command with bit A8 set to zero and bits A0-A7 and A9-A11 set to the desired values. A DLL Reset is initiated by issuing a Mode Register Set command with bit A8 set to one and bits A0-A7 and A9-A11 set to the desired values. The GDDR3 Graphics RAM returns automatically in the normal mode of operations once the DLL reset is completed.



## 4.2 Extended Mode Register Set Command (EMRS1)

**FIGURE 8**  
Extended Mode Register Set Command



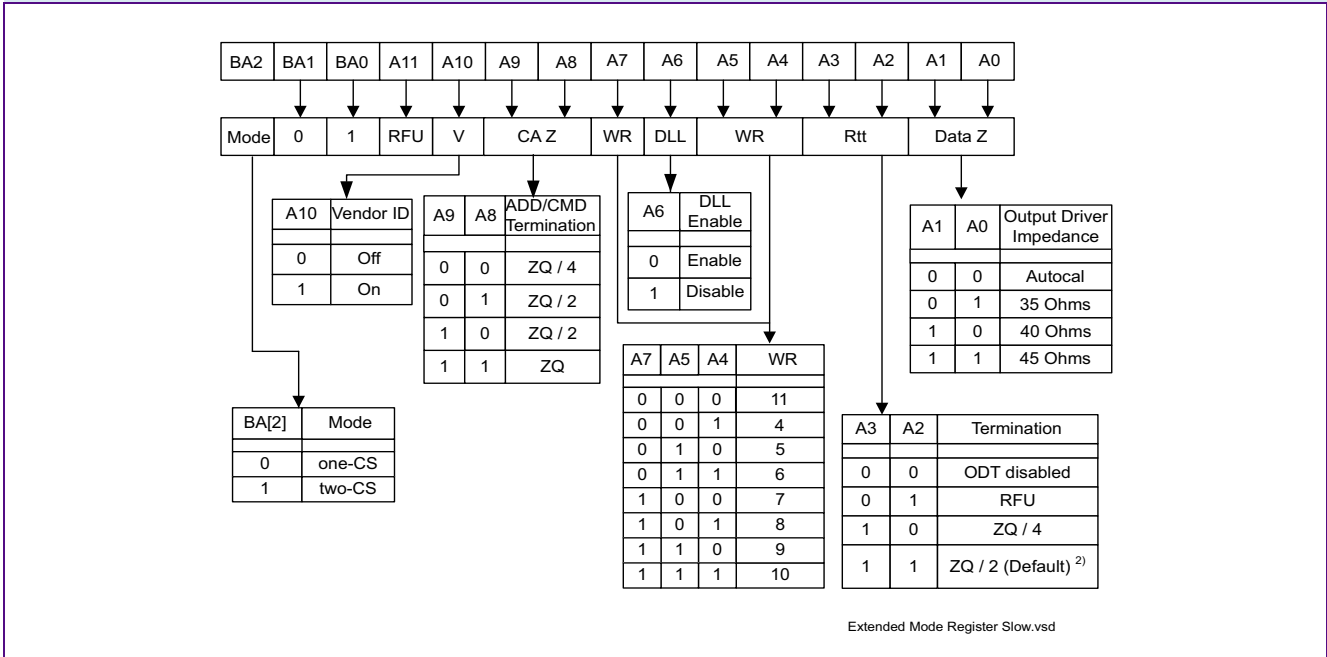
The Extended Mode Register is used to control multiple operation modes of the device. The most important one is the organization as a 1-CS or a 2-CS device. Furthermore, it is used to set the output driver impedance value, the termination impedance value, the Write Recovery time value for Write with Autoprecharge. It is used as well to enable/disable the DLL, to issue the Vendor ID. There is no default value for the Extended Mode Register. Therefore it must be written after power up to operate the GDDR3 Graphics RAM. The Extended Mode Register can be programmed by performing a normal Mode Register Set operation and setting the BA0 bit to HIGH. All other bits of the EMR register are reserved and should be set to LOW. The Extended Mode Register must be loaded when all banks are idle and no burst are in progress. The controller must wait the specified time  $t_{MRD}$  before initiating any subsequent operation (Figure 10). The timing of the EMRS command operation is equivalent to the timing of the MRS command operation.

To apply an EMRS command, CS0 has to be used.



**FIGURE 9**

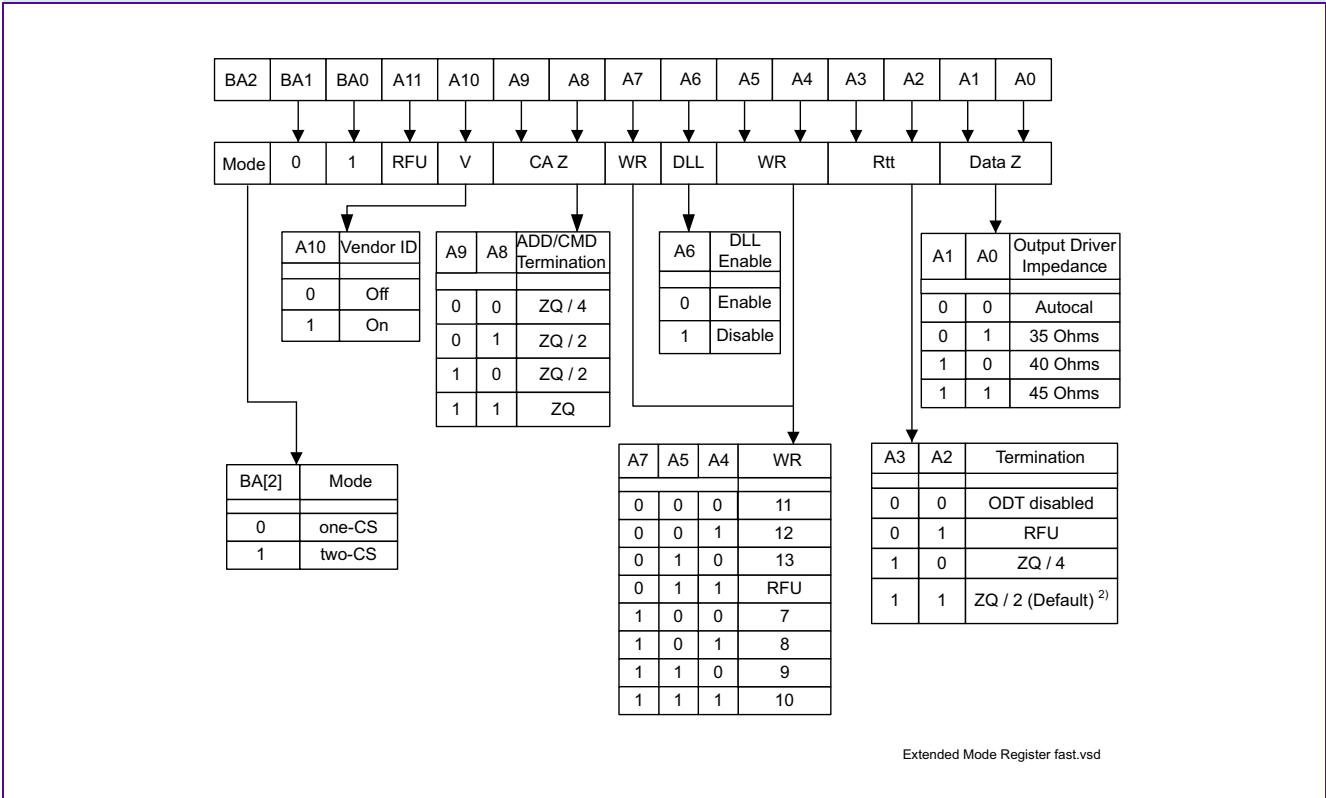
**Extended Mode Register Bitmap for Mid-Range-Speed Application**



There are two bitmaps for the Extended Mode Register. One bitmap shown in **Figure 9** is supposed to support Mid-Range-Speed applications. The other bitmap shown in **Figure 10** is more focused on the high-range-speed application. Both bitmaps distinguish different numbers in supported Write Recovery clock cycles. The mid-range bit map provides WR cycles from 4 to 11. The high-speed bitmap supports WR from 7 to 13.



**FIGURE 10**  
Extended Mode Register Bitmap for High-Speed Application

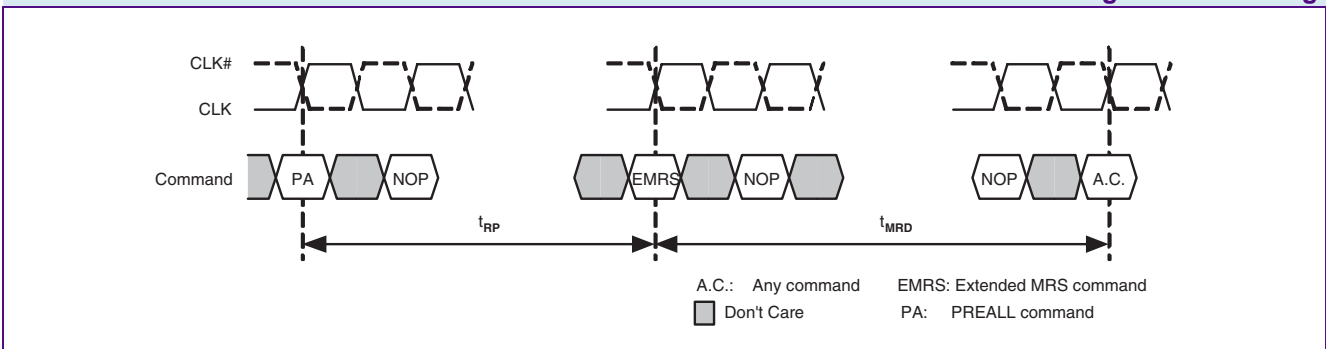


**Notes**

1. These settings are for debugging purposes only.
2. Default termination values at Power Up.
3. The ODT disable function disables all terminators on the device.
4. If the user activates bits in the extended mode register in an optional field, either the optional field is activated (if

- option implemented in the device) or no action is taken by the device (if option not implemented).
5. WR (write recovery time for auto precharge) in clock cycles is calculated by dividing  $t_{WR}$  (in ns) and rounding up to the next integer ( $WR[cycles] = t_{WR}[ns] / t_{CLK}[ns]$ ). The mode register must be programmed to this value.

**FIGURE 11**  
Extended Mode Register Set Timing





### 4.2.1 DLL enable

The DLL must be enabled for normal operation. DLL enable is required during power-up initialization and upon returning to normal operation after having disabled the DLL. (When the device exits self-refresh mode, the DLL is enabled automatically). Anytime the DLL is enabled, 1000 cycles must occur before a READ command can be issued.

### 4.2.2 WR

The WR parameter is programmed using the register bits A4, A5 and A7. This integer parameter defines as a number of clock cycles the Write Recovery time in a Write with Autoprecharge operation.

The following inequality has to be complied with:  $WR * t_{CK} \geq t_{WR}$ , where  $t_{CK}$  is the clock cycle time. The high-speed bitmap supports WR from 7 to 13. The mid-range bitmap provides WR cycles from 4 to 11.

### 4.2.3 Termination Rtt

The data termination, Rtt, is used to set the value of the internal termination resistors. The GDDR3 DRAM supports ZQ / 4 and ZQ / 2 termination values. The termination may also be disabled for testing and other purposes. Data -, address - and command - termination are disabled in parallel. The Termination Rtt are controlled independently from the Output Driver Impedance values.

### 4.2.4 Output Driver Impedance

The Output Driver Impedance extended mode register is used to set the value of the data output driver impedance. When the auto calibration is used, the output driver impedance is set nominally to ZQ / 6.

If the Output Driver Impedance is changed to 35, 40 or 45 Ohms the user needs to issue 16 AREF commands separated by  $t_{RFC}$  consecutively to make the change effective. The user must be aware that the Command bus needs to be stable for a time of  $t_{KO}$  after each AREF.

### 4.2.5 Vendor Code and Revision Identification

The Manufacturer Vendor Code is selected by issuing an Extended Mode Register Set command with bit A10 set to 1 and bits A0-A9 and A11 set to the desired value. When the Vendor Code function is enabled the GDDR3 DRAM will provide the Qimonda vendor code on DQ[3:0] and the revision identification on DQ[7:4]. The code will be driven onto the DQ bus after  $t_{RIDon}$  following the EMRS command that sets A10 to 1. The Vendor Code and Revision ID will be driven on DQ[7:0] until a new EMRS command is issued with A10 set back to 0. After  $t_{RIDoff}$  following the second EMRS command, the data bus is driven back to HIGH. This second EMRS command must be issued before initiating any subsequent operation. Violating this requirement will result in unspecified operation.

**TABLE 9**  
Revision ID and Vendor Code

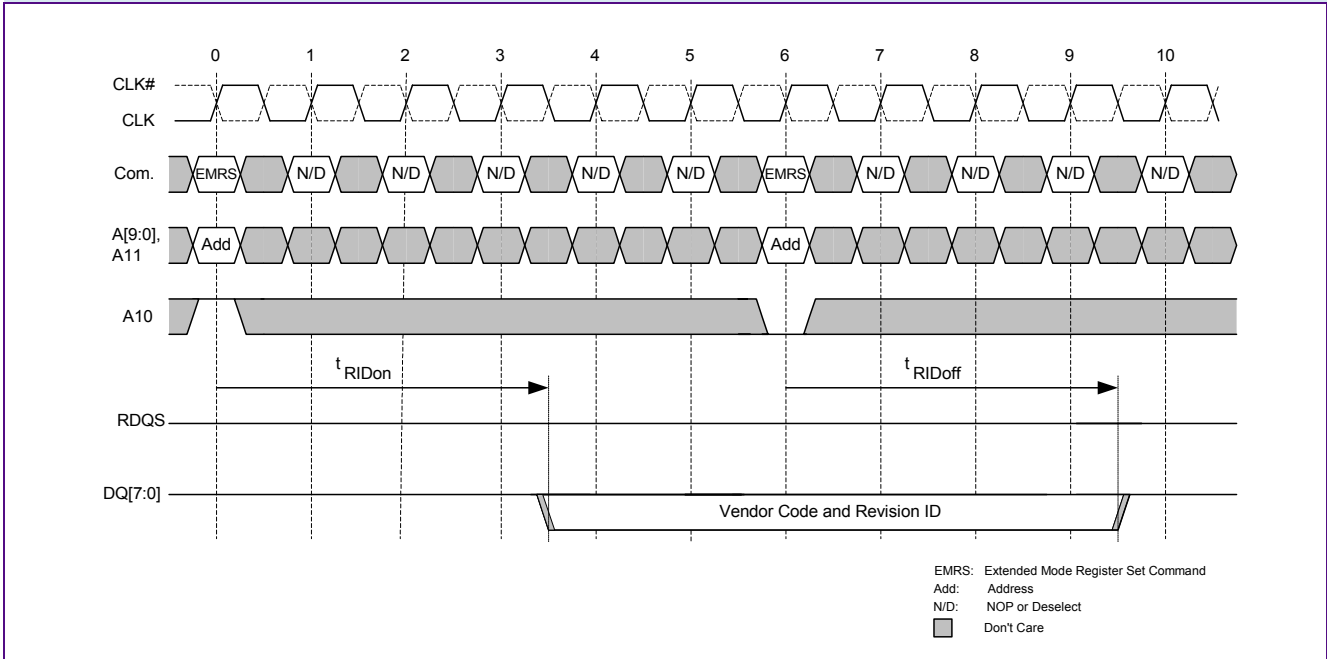
| Revision Identification | Qimonda Vendor Code |
|-------------------------|---------------------|
| DQ[7:4]                 | DQ[3:0]             |
| 0011                    | 0010                |

Note: Please refer to Revision Release Note for Revision ID value.



**FIGURE 12**

**Timing of Vendor Code and Revision ID Generation on DQ[7:0]**



### 4.2.6 Address command termination

The address and command termination is used to set the value of the internal termination resistors. The GDDR3 DRAM supports ZQ / 4, ZQ / 2 and ZQ termination values. The mode register programming overwrites the programming during the chip initialization.

### 4.2.7 Operation mode

The GDDR3 DRAM can be internally configured as two 512Mbit (2-CS mode) or one 1Gbit device (1-CS mode). The pins CS1 and A12 are only active in two, resp. 1-CS mode and act either as the chip select for the second rank, or the row-address for the upper 4k-row-address range. If bit A2 from EMRS2 (“Merged Mode”) is set to 1 then the 2 operations mode will be inverted. Note also that at 1000 MHz speed grade only 1-CS mode is supported.

**TABLE 10**

**Operation Mode Function of defined Merged Mode**

| Operation Mode | Merged Mode = 0 | Merged Mode = 1 |
|----------------|-----------------|-----------------|
| 0              | one-CS          | two-CS          |
| 1              | two-CS          | one-CS          |

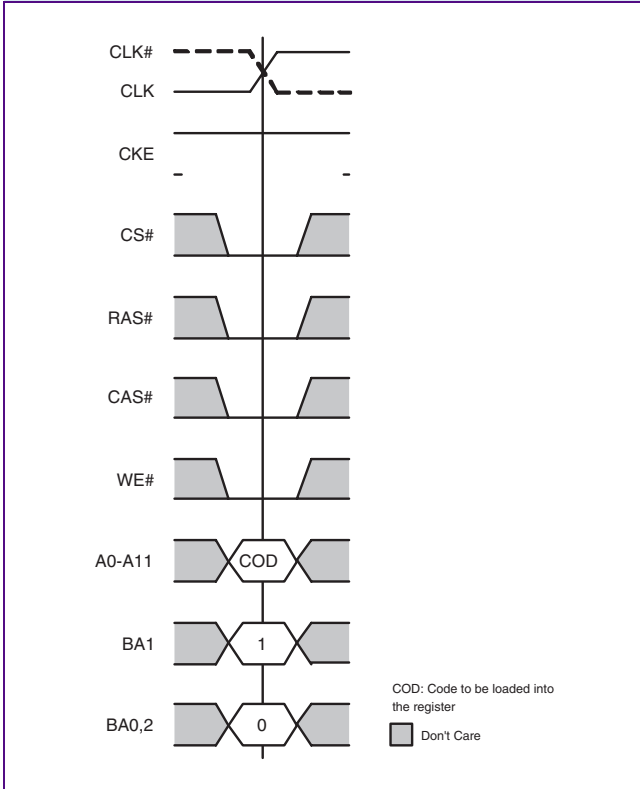




### 4.3 Extended Mode Register 2 Set Command (EMRS2)

**FIGURE 13**

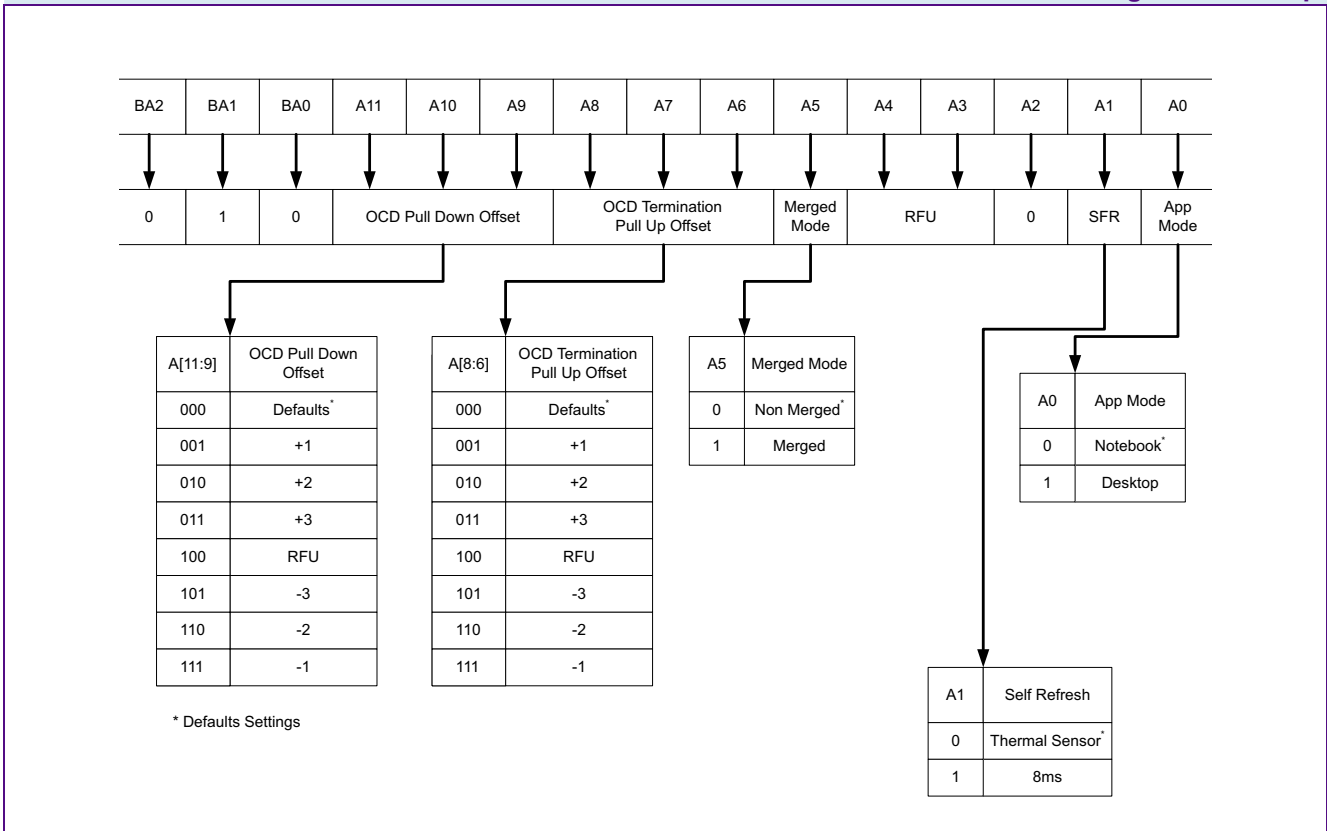
**Extended Mode Register 2 Set Command**



The Extended Mode Register 2 must be written after power up to operate the GDDR3 Graphics RAM. The Extended Mode Register 2 can be programmed by performing a normal Mode Register Set operation and setting the BA1 bit to HIGH and BA0, BA2 bits to LOW. All bits defined as RFU in the bitmap are reserved and must be set to LOW. The Extended Mode Register 2 must be loaded when all banks are idle and no burst are in progress. The controller must wait the specified time  $t_{MRD}$  before initiating any subsequent operation. The timing of the EMRS2 command operation is equivalent to the timing of the MRS command operation.



**FIGURE 14**  
**Extended Mode Register 2 Bitmap**



### 4.3.1 App Mode

The GDDR3 Graphics RAM provides two bitmaps for the Mode Register and the Extended Mode Register respectively. The Bitmaps are shown in the MRS and EMRS chapters.

The Bit0 of the Extended Mode Register 2 defines which one of the two bitmaps is active. There Bit0 set to LOW enables the mid-range bitmap and Bit0 set to HIGH enables the High-Speed bitmap.

### 4.3.2 OCD Pull Down Offset

The 1G GDDR3 add the ability to add an offset to the Output impedance driver set using the bit A[1:0] of the EMRS. A range from -3 to +3 can be chosen using A[11:9]. Each steps correspond to an approximate change of 1 Ohms. The offset will be applied also on Autocal value if selected.

### 4.3.3 OCD Termination Pull Up Offset

The 1G GDDR3 add the ability to add an offset to the OCD Termination set using the bit A[3:2] of the EMRS. A range from -3 to +3 can be chosen using A[8:6]. Each steps correspond to an approximate change of 1.5 Ohms.



### 4.3.4 Merged Mode

"Merged Mode" has been added to the EMRS2 in order to merge the node A12/CS1 to a single ball (J-3) of the chip. Default setting has both pins are using two different balls (J-2 and J-3).

### 4.3.5 Self Refresh

Self Refresh is used to control the timing of the refresh operation when the memory is in Self Refresh. When bit A1 is set to 0 then the refresh timing is controlled by the embedded Temperature Sensor. In this mode of operation if the temperature is higher than 100°C then the refresh will happen every 8ms. If the temperature is below 100°C then the refresh will happen every 32 ms. If the A1 is set to 1 then the refresh timing will be independent from the temperature and fixed to 8 ms.



## 5 Electrical Characteristics

### 5.1 Absolute Maximum Ratings and Operation Conditions

**TABLE 11**  
Absolute Maximum Ratings

| Parameter                              | Symbol    | Rating |      | Unit |
|--|-----------|--------|------|------|
|  |           | Min.   | Max. |      |
| Power Supply Voltage                   | $V_{DD}$  | -0.5   | 2.5  | V    |
| Power Supply Voltage for Output Buffer | $V_{DDQ}$ | -0.5   | 2.5  | V    |
| Input Voltage                          | $V_{IN}$  | -0.5   | 2.5  | V    |
| Output Voltage                         | $V_{OUT}$ | -0.5   | 2.5  | V    |
| Storage Temperature                    | $T_{STG}$ | -55    | +150 | °C   |
| Junction Temperature                   | $T_J$     | —      | +125 | °C   |
| Short Circuit Output Current           | $I_{OUT}$ | —      | 50   | mA   |

**Attention:** Stresses above the max. values listed here may cause permanent damage to the device. Exposure to absolute maximum rating conditions for extended periods may affect device reliability. Maximum ratings are absolute ratings; exceeding only one of these values may cause irreversible damage to the integrated circuit.

### 5.2 DC Operation Conditions

#### 5.2.1 Recommended Power & DC Operation Conditions

**TABLE 12**  
Power & DC Operation Conditions ( $0\text{ °C} \leq T_c \leq 95\text{ °C}$ )

| Parameter                           | Symbol            | Limit Values |      |      | Unit | Note |
|-------------------------------------|-------------------|--------------|------|------|------|------|
|                                     |                   | Min.         | Typ. | Max. |      |      |
| Power Supply Voltage                | $V_{DD}, V_{DDA}$ | 1.7          | 1.8  | 1.9  | V    |      |
| Power Supply Voltage for I/O Buffer | $V_{DDQ}$         | 1.7          | 1.8  | 1.9  | V    |      |



| Parameter                 | Symbol       | Limit Values         |      |                      | Unit    | Note |
|---------------------------|--------------|----------------------|------|----------------------|---------|------|
|                           |              | Min.                 | Typ. | Max.                 |         |      |
| Reference Voltage         | $V_{REF}$    | $0.69 \cdot V_{DDQ}$ | —    | $0.71 \cdot V_{DDQ}$ | V       | 1)   |
| Output Low Voltage        | $V_{OL(DC)}$ | —                    | —    | 0.8                  | V       |      |
| Input leakage current     | $I_{IL}$     | -5.0                 | —    | +5.0                 | $\mu A$ | 2)   |
| CLK Input leakage current | $I_{ILC}$    | -5.0                 | —    | +5.0                 | $\mu A$ |      |
| Output leakage current    | $I_{OL}$     | -5.0                 | —    | +5.0                 | $\mu A$ | 2)   |

1)  $V_{REF}$  is expected to equal 70% of  $V_{DDQ}$  for the transmitting device and to track variations in the DC level of the same. Peak-to-peak noise on  $V_{REF}$  may not exceed  $\pm 2\% V_{REF}$  (DC). Thus, from 70% of  $V_{DDQ}$ ,  $V_{REF}$  is allowed  $\pm 19mV$  for DC error and an additional  $\pm 27mV$  for AC noise.

2)  $I_{IL}$  and  $I_{OL}$  are measured with ODT disabled.

### 5.3 DC & AC Logic Input Levels

**TABLE 13**  
DC & AC Logic Input Levels ( $0^\circ C \leq T_c \leq 95^\circ C$ )

| Parameter                       | Symbol         | Limit Values          |                       | Unit | Note |
|---------------------------------|----------------|-----------------------|-----------------------|------|------|
|                                 |                | Min.                  | Max.                  |      |      |
| Input logic high voltage, DC    | $V_{IH(DC)}$   | $V_{REF} + 0.15$      | —                     | V    | 1)   |
| Input logic low voltage, DC     | $V_{IL(DC)}$   | —                     | $V_{REF} - 0.15$      | V    | 1)   |
| Input logic high voltage, AC    | $V_{IH(AC)}$   | $V_{REF} + 0.25$      | —                     | V    | 2)3) |
| Input logic low voltage, AC     | $V_{IL(AC)}$   | —                     | $V_{REF} - 0.25$      | V    | 2)3) |
| Input logic high, DC, RESET pin | $V_{IHR(DC)}$  | $0.65 \times V_{DDQ}$ | $V_{DDQ} + 0.3$       | V    |      |
| Input logic low, DC, RESET pin  | $V_{ILR(DC)}$  | -0.3                  | $0.35 \times V_{DDQ}$ | V    |      |
| Input Logic High, DC, MF pin    | $V_{IHMF(DC)}$ | $V_{DD}$              | $V_{DD} + 0.3$        | V    | 4)   |
| Input Logic Low, DC, MF pin     | $V_{ILMF(DC)}$ | -0.3                  | 0                     | V    |      |

1) The DC values define where the input slew rate requirements are imposed, and the input signal must not violate these levels in order to maintain a valid level.

2) Input slew rate = 3 V/ns. If the input slew rate is less than 3 V/ns, input timing may be compromised. All slew rates are measured between  $V_{IL(DC)}$  and  $V_{IH(DC)}$ .

3)  $V_{IH}$  overshoot:  $V_{IH(max)} = V_{DDQ} + 0.5V$  for a pulse width  $\leq 500ps$  and the pulse width cannot be greater than 1/3 of the cycle rate.  $V_{IL}$  undershoot:  $V_{IL(min)} = 0V$  for a pulse width  $\leq 500ps$  and the pulse width cannot be greater than 1/3 of the cycle rate.

4) The MF pin must be hard-wired on board to either  $V_{DD}$  or  $V_{SS}$ .



## 5.4 Differential Clock DC and AC Levels

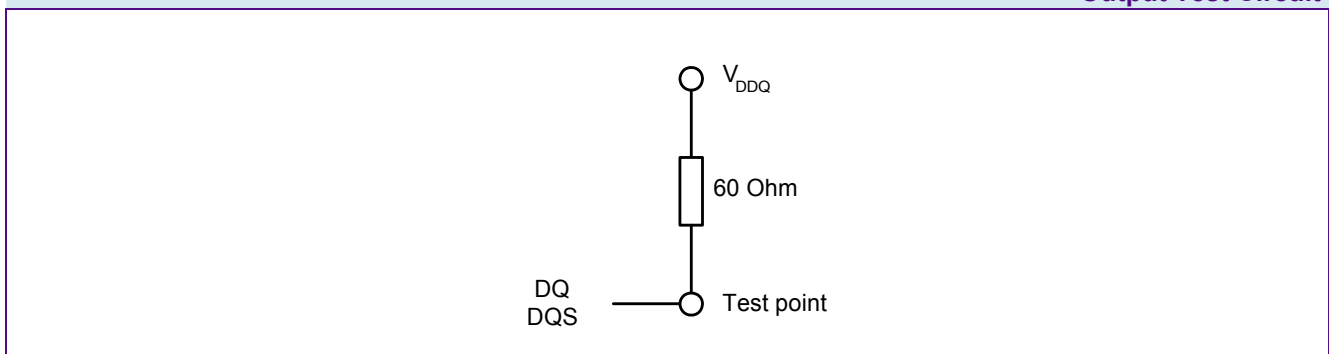
**TABLE 14**  
Differential Clock DC and AC Input conditions ( $0\text{ }^{\circ}\text{C} \leq T_c \leq 95\text{ }^{\circ}\text{C}$ )

| Parameter  | Symbol              | Limit Values                       |                                    | Unit | Note |
|--|---------------------|------------------------------------|------------------------------------|------|------|
|  |                     | Min.                               | Max.                               |      |      |
| Clock Input Mid-Point Voltage, CLK and $\overline{\text{CLK}}$       | $V_{\text{MP(DC)}}$ | $0.7 \times V_{\text{DDQ}} - 0.10$ | $0.7 \times V_{\text{DDQ}} + 0.10$ | V    | 1)   |
| Clock Input Voltage Level, CLK and $\overline{\text{CLK}}$           | $V_{\text{IN(DC)}}$ | 0.42                               | $V_{\text{DDQ}} + 0.3$             | V    | 1)   |
| Clock DC Input Differential Voltage, CLK and $\overline{\text{CLK}}$ | $V_{\text{ID(DC)}}$ | 0.3                                | $V_{\text{DDQ}}$                   | V    | 1)   |
| Clock AC Input Differential Voltage, CLK and $\overline{\text{CLK}}$ | $V_{\text{ID(AC)}}$ | 0.5                                | $V_{\text{DDQ}} + 0.5$             | V    | 1)2) |
| AC Differential Crossing Point Input Voltage                         | $V_{\text{IX(AC)}}$ | $0.7 \times V_{\text{DDQ}} - 0.15$ | $0.7 \times V_{\text{DDQ}} + 0.15$ | V    | 1)3) |

- 1) All voltages referenced to  $V_{\text{SS}}$ .
- 2)  $V_{\text{ID}}$  is the magnitude of the difference between the input level on CLK and the input level on  $\overline{\text{CLK}}$ .
- 3) The value of  $V_{\text{IX}}$  is expected to equal  $0.7 \times V_{\text{DDQ}}$  of the transmitting device and must track variations in the DC level of the same.

## 5.5 Output Test Conditions

**FIGURE 15**  
Output Test Circuit





## 5.6 Pin Capacitances

**TABLE 15**

**Pin Capacitances (VDDQ = 1.8 V, TA = 25°C, f = 1 MHz)**

| Parameter   | Symbol | Min. | Max. | Unit | Note |
|---|--------|------|------|------|------|
| Input capacitance:<br>A0-A11,A12, , BA0-2, CKE, $\overline{CS}$ , $\overline{CAS}$ , $\overline{RAS}$ , $\overline{WE}$ , CKE,<br>RES,CLK,CLK | CI,CCK | 1.0  | 2.5  | pF   |      |
| Input capacitance:<br>DQ0-DQ31, RDQS0-RDQS3, WDQS0-WDQS3, DM0-DM3   | CIO    | 2.0  | 3.0  | pF   |      |

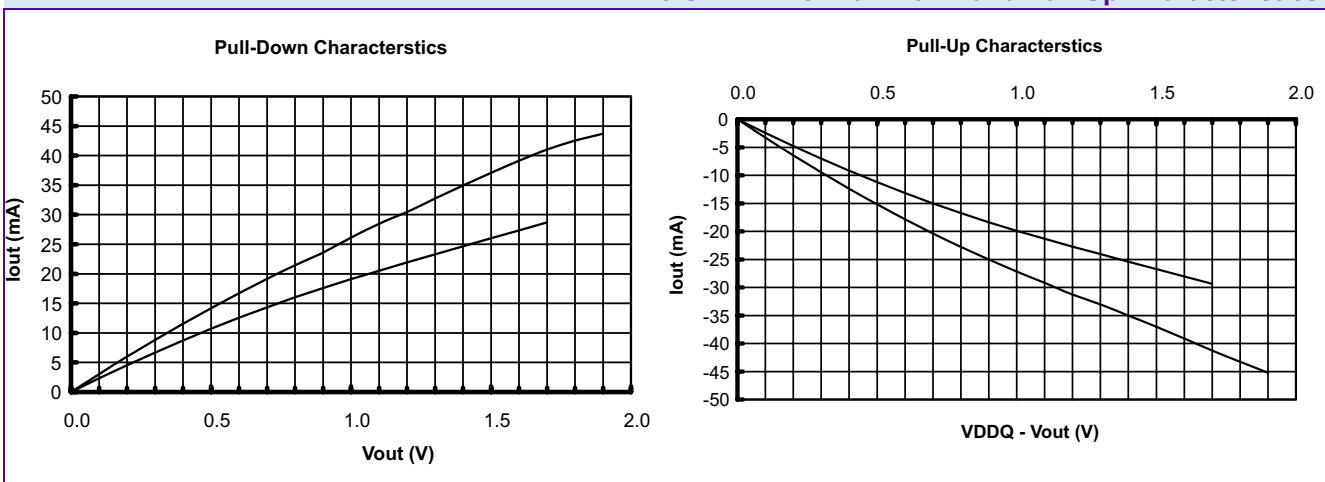
## 5.7 Driver current characteristics

### 5.7.1 Driver IV characteristics at 40 Ohms

**Figure 16** represents the driver Pull-Down and Pull-Up IV characteristics under process, voltage and temperature best and worst case conditions. The actual Driver Pull-Down and Pull-Up current must lie between these two bounding curves. The value of the external ZQ resistor is 240  $\Omega$ , setting the nominal driver output impedance to 40  $\Omega$ .

**FIGURE 16**

**40 Ohm Driver Pull-Down and Pull-Up Characteristics**



**Table 16** lists the numerical values of the minimum and maximum allowed values of the output driver Pull-Down and Pull-Up IV characteristics.

**TABLE 16**  
Programmed Driver IV Characteristics at 40 Ohm

| Voltage (V) | Pull-Down Current (mA) |         | Pull-Up Current (mA) |         |
|-------------|------------------------|---------|----------------------|---------|
|             | Minimum                | Maximum | Minimum              | Maximum |
| 0.1         | 2.32                   | 3.04    | -2.44                | -3.27   |
| 0.2         | 4.56                   | 5.98    | -4.79                | -6.42   |
| 0.3         | 6.69                   | 8.82    | -7.03                | -9.45   |
| 0.4         | 8.74                   | 11.56   | -9.18                | -12.37  |
| 0.5         | 10.70                  | 14.19   | -11.23               | -15.17  |
| 0.6         | 12.56                  | 16.72   | -13.17               | -17.83  |
| 0.7         | 14.34                  | 19.14   | -15.01               | -20.37  |
| 0.8         | 16.01                  | 21.44   | -16.74               | -22.78  |
| 0.9         | 17.61                  | 23.61   | -18.37               | -25.04  |
| 1.0         | 19.11                  | 26.10   | -19.90               | -27.17  |
| 1.1         | 20.53                  | 28.45   | -21.34               | -29.17  |
| 1.2         | 21.92                  | 30.45   | -22.72               | -31.25  |
| 1.3         | 23.29                  | 32.73   | -24.07               | -33.00  |
| 1.4         | 24.65                  | 34.95   | -25.40               | -35.00  |
| 1.5         | 26.00                  | 37.10   | -26.73               | -37.00  |
| 1.6         | 27.35                  | 39.15   | -28.06               | -39.14  |
| 1.7         | 28.70                  | 41.01   | -29.37               | -41.25  |
| 1.8         | 30.08                  | 42.53   | -30.66               | -43.29  |
| 1.9         | —                      | 43.71   | —                    | -45.23  |
| 2.0         | —                      | 44.89   | —                    | -47.07  |

## 5.7.2 Termination IV Characteristic at 60 Ohms

**Figure 17** represents the DQ termination Pull-Up IV characteristic under process, voltage and temperature best and worst case conditions. The actual DQ termination Pull-Up current must lie between these two bounding curves. The value of the external ZQ resistor is 240  $\Omega$ , setting the nominal DQ termination impedance to 60  $\Omega$ . (Extended Mode Register programmed to ZQ/4).





**FIGURE 17**  
60 Ohm Active Termination Characteristic

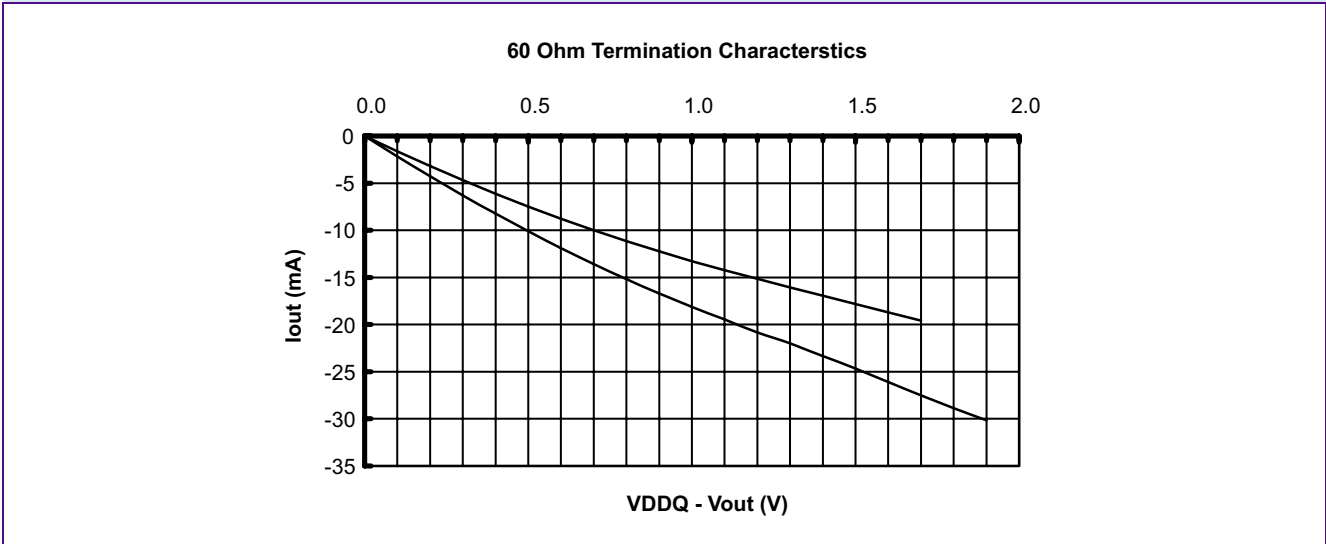


Table 17 lists the numerical values of the minimum and maximum allowed values of the output driver termination IV characteristic.

**TABLE 17**  
Programmed Terminator Characteristics at 60 Ohm

| Voltage (V) | Terminator Pull-Up Current (mA) |         | Voltage (V) | Terminator Pull-Up Current (mA) |         |
|-------------|---------------------------------|---------|-------------|---------------------------------|---------|
|             | Minimum                         | Maximum |             | Minimum                         | Maximum |
| 0.1         | -1.63                           | -2.18   | 1.1         | -14.23                          | -19.45  |
| 0.2         | -3.19                           | -4.28   | 1.2         | -15.14                          | -20.83  |
| 0.3         | -4.69                           | -6.30   | 1.3         | -16.04                          | -22.00  |
| 0.4         | -6.12                           | -8.25   | 1.4         | -16.94                          | -23.33  |
| 0.5         | -7.49                           | -10.11  | 1.5         | -17.82                          | -24.67  |
| 0.6         | -8.78                           | -11.89  | 1.6         | -18.70                          | -26.09  |
| 0.7         | -10.01                          | -13.58  | 1.7         | -19.58                          | -27.50  |
| 0.8         | -11.16                          | -15.19  | 1.8         | -20.44                          | -28.86  |
| 0.9         | -12.25                          | -16.69  | 1.9         | —                               | -30.15  |
| 1.0         | -13.27                          | -18.11  | 2.0         | —                               | -31.38  |

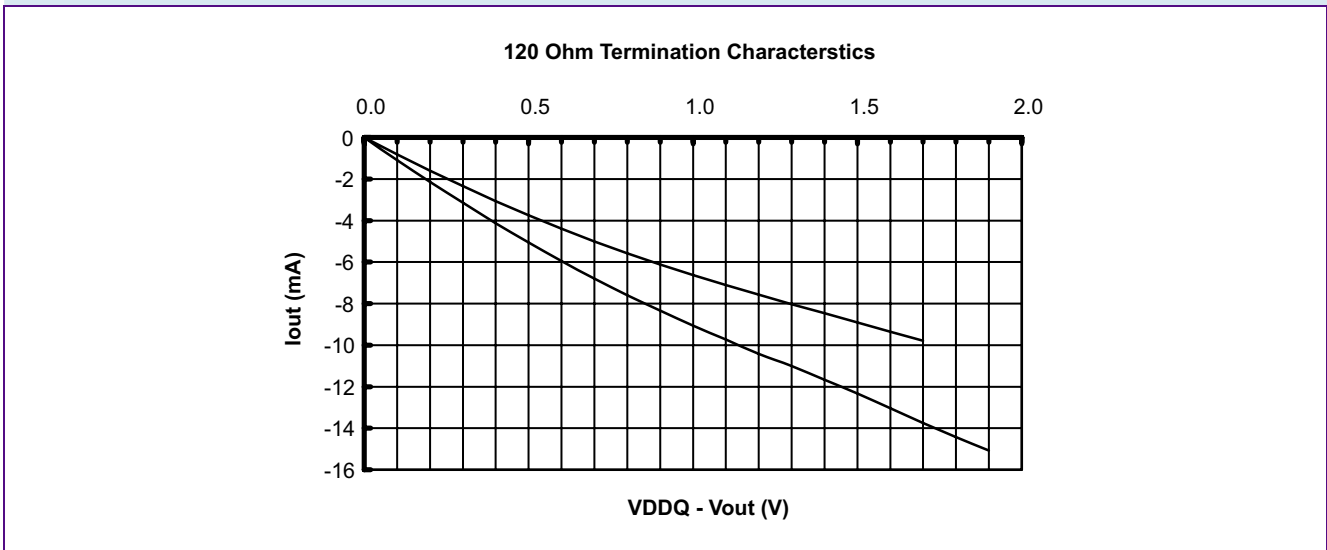


## 5.8 Termination IV Characteristic at 120 Ohms

**Figure 18** represents the DQ or ADD/CMD termination Pull-Up IV characteristic under process, voltage and temperature best and worst case conditions. The actual termination Pull-Up current must lie between these two bounding curves. The value of the external ZQ resistor is 240 Ω, setting the nominal termination impedance to 120 Ω. (Extended Mode Register programmed to ZQ/2 for DQ terminations or CKE = 0 at the RES transition during Power-Up for ADD/CMD terminations).

**FIGURE 18**

**120 Ohm Active Termination Characteristic**



**Table 18** lists the numerical values of the minimum and maximum allowed values of the termination IV characteristic.

**TABLE 18**

**Programmed Terminator Characteristics of 120 Ohm**

| Voltage (V) | Terminator Pull-Up Current (mA) |         | Voltage (V) | Terminator Pull-Up Current (mA) |         |
|-------------|---------------------------------|---------|-------------|---------------------------------|---------|
|             | Minimum                         | Maximum |             | Minimum                         | Maximum |
| 0.1         | -0.81                           | -1.09   | 1.1         | -7.11                           | -9.72   |
| 0.2         | -1.60                           | -2.14   | 1.2         | -7.57                           | -10.42  |
| 0.3         | -2.34                           | -3.15   | 1.3         | -8.02                           | -11.00  |
| 0.4         | -3.06                           | -4.12   | 1.4         | -8.47                           | -11.67  |
| 0.5         | -3.74                           | -5.06   | 1.5         | -8.91                           | -12.33  |
| 0.6         | -4.39                           | -5.94   | 1.6         | -9.35                           | -13.05  |
| 0.7         | -5.00                           | -6.79   | 1.7         | -9.79                           | -13.75  |
| 0.8         | -5.58                           | -7.59   | 1.8         | -10.22                          | -14.43  |
| 0.9         | -6.12                           | -8.35   | 1.9         | —                               | -15.08  |
| 1.0         | -6.63                           | -9.06   | 2.0         | —                               | -15.69  |

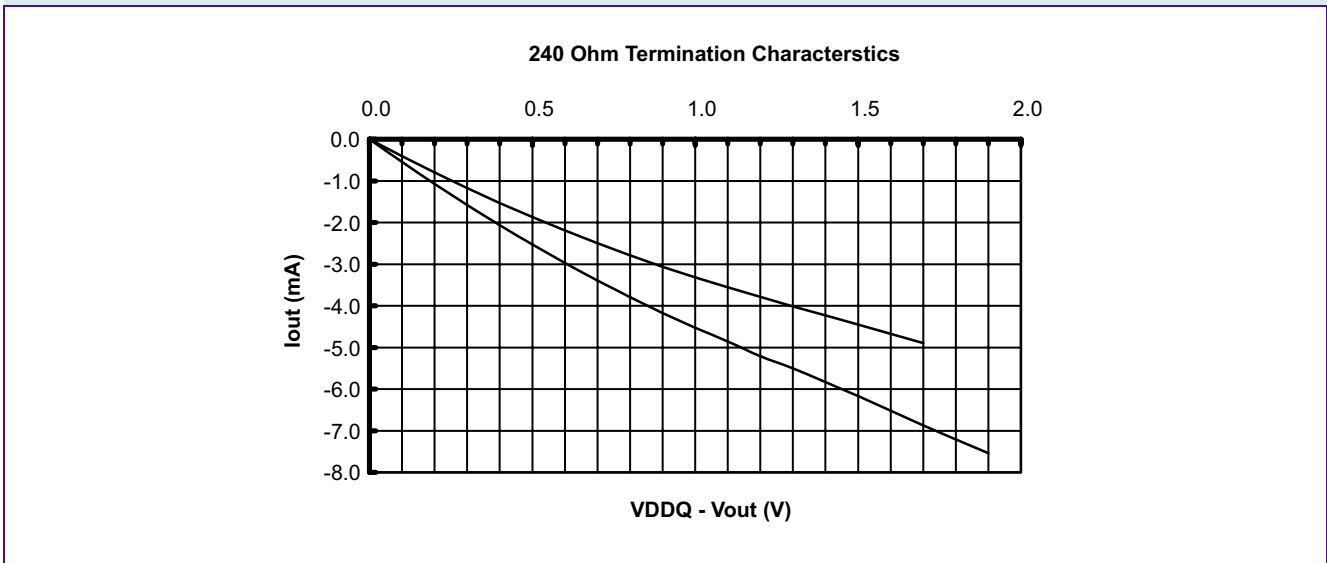


## 5.9 Termination IV Characteristic at 240 Ohms

**Figure 19** represents the ADD/CMD termination Pull-Up IV characteristic under process, voltage and temperature best and worst case conditions. The actual ADD/CMD termination Pull-Up current must lie between these two bounding curves. The value of the external ZQ resistor is 240 Ω, setting the nominal termination impedance to 240 Ω. (CKE = 1at the RES transition during Power-Up for ADD/CMD terminations).

**FIGURE 19**

**240 Ohm Active Termination Characteristic**



**Table 19** lists the numerical values of the minimum and maximum allowed values of the ADD/CMD termination IV characteristic.

**TABLE 19**

**Programmed Terminator Characteristics at 240 Ohm**

| Voltage (V) | Terminator Pull-Up Current (mA) |         | Voltage (V) | Terminator Pull-Up Current (mA) |         |
|-------------|---------------------------------|---------|-------------|---------------------------------|---------|
|             | Minimum                         | Maximum |             | Minimum                         | Maximum |
| 0.1         | -0.41                           | -0.55   | 1.1         | -3.56                           | -4.86   |
| 0.2         | -0.80                           | -1.07   | 1.2         | -3.79                           | -5.21   |
| 0.3         | -1.17                           | -1.58   | 1.3         | -4.01                           | -5.50   |
| 0.4         | -1.53                           | -2.06   | 1.4         | -4.23                           | -5.83   |
| 0.5         | -1.87                           | -2.53   | 1.5         | -4.46                           | -6.17   |
| 0.6         | -2.20                           | -2.97   | 1.6         | -4.68                           | -6.52   |
| 0.7         | -2.50                           | -3.40   | 1.7         | -4.90                           | -6.88   |
| 0.8         | -2.79                           | -3.80   | 1.8         | -5.11                           | -7.21   |
| 0.9         | -3.06                           | -4.17   | 1.9         | —                               | -7.54   |
| 1.0         | -3.32                           | -4.53   | 2.0         | —                               | -7.85   |



## 5.10 Operating Currents

### 5.10.1 Operating Current Ratings for HYB18H1G321AF–10/11/14

**TABLE 20**  
Operating Current Ratings ( 0 °C ≤ T<sub>c</sub> ≤ 95 °C)

| Parameter   | Symbol     | Limit Values |      |      | Unit | Note     |        |
|---|------------|--------------|------|------|------|----------|--------|
|   |            | -10          | -11  | -14  |      |          |        |
|   |            | Typ.         | Typ. | Typ. |      |          |        |
| Operating Current                                 | $I_{DD0}$  | 375          | 350  | 300  | mA   | 1) 2) 3) |        |
| Operating Current                                 | $I_{DD1}$  | 390          | 370  | 310  | mA   | 1)2)3)   |        |
| Precharge Power-Down Standby Current              | $I_{DD2P}$ | 240          | 220  | 180  | mA   | 1)2)3)   |        |
| Precharge Floating Standby Current                | $I_{DD2F}$ | 300          | 275  | 230  | μA   | 1)2)3)   |        |
| Precharge Quiet Standby Current                   | $I_{DD2Q}$ | 275          | 250  | 215  | μA   | 1)2)3)   |        |
| Active Power-Down Standby Current                 | $I_{DD3P}$ | 240          | 220  | 180  | μA   | 1)2)3)   |        |
| Active Standby Current                            | $I_{DD3N}$ | 380          | 360  | 310  | mA   | 1)2)3)   |        |
| Operating Current Burst Read                      | $I_{DD4R}$ | 510          | 470  | 395  | mA   | 1)2)3)   |        |
| Operating Current Burst Write                     | $I_{DD4W}$ | 540          | 495  | 415  | mA   | 1)2)3)   |        |
| Auto-Refresh Current ( $t_{RC} = \min(t_{RFC})$ ) | $I_{DD5B}$ | 570          | 550  | 450  | mA   | 1)2)3)   |        |
| Auto-Refresh Current at $t_{REF1}$                | $I_{DD5D}$ | 300          | 280  | 235  | mA   | 1)2)3)   |        |
| Self Refresh Current                              | $I_{DD6}$  | 10           | 10   | 10   | mA   | 1)2)3)4) |        |
| Operating Current                                 | 1-CS       | $I_{DD7}$    | 520  | 500  | 420  | mA       | 1)2)3) |
|   | 2-CS       |              | NA   | 690  | 560  | mA       | 1)2)3) |

- 1) IDD specifications are tested after the device is properly initialized.
- 2) Input slew rate = 3V/ns.
- 3) Measured with Output open and On Die termination off.
- 4) Enables on-chip refresh and address counter.



## 5.11 Operating Current Measurement Conditions

**TABLE 21**  
**Operating Current Measurement Conditions**

| Symbol     | Parameter/Condition  |
|------------|--|
| $I_{DD0}$  | Operating Current - One bank, Activate - Precharge<br>$t_{CK}=\min(t_{CK}), t_{RC}=\min(t_{RC})$<br>Databus inputs are SWITCHING; Address and control inputs are SWITCHING, $\overline{CS}$ = HIGH between valid commands.                                 |
| $I_{DD1}$  | Operating Current - One bank, Activate - Read - Precharge<br>One bank is accessed with $t_{CK}=\min(t_{CK}), t_{RC}=\min(t_{RC}), CL = CL(\min)$ , Address and control inputs are SWITCHING; $\overline{CS}$ = HIGH between valid commands. $I_{out}=0$ mA |
| $I_{DD2P}$ | Precharge Power-Down Standby Current<br>All banks idle, power-down mode, CKE is LOW, $t_{CK}=\min(t_{CK})$ , Data bus inputs are STABLE (HIGH).  |
| $I_{DD2F}$ | Precharge Floating Standby Current<br>All banks idle; $\overline{CS}$ is HIGH, CKE is HIGH, $t_{CK}=\min(t_{CK})$ ; Address and control inputs are SWITCHING; Data bus input are STABLE (HIGH).  |
| $I_{DD2Q}$ | Precharge Quiet Standby Current<br>$\overline{CS}$ is HIGH, all banks idle, CKE is HIGH, $t_{CK}=\min(t_{CK})$ , Address and other control inputs STABLE (HIGH), Data bus inputs are STABLE (HIGH).  |
| $I_{DD3P}$ | Active Power-Down Standby Current<br>One bank active, CKE is LOW, Address and control inputs are STABLE (HIGH); Data bus inputs are STABLE (HIGH); standard active power-down mode.  |
| $I_{DD3N}$ | Active Standby Current<br>One bank active, $\overline{CS}$ is HIGH, CKE is HIGH, $t_{RAS} = t_{RAS,max}, t_{CK}=\min(t_{CK})$ ; Address and control inputs are SWITCHING; Data bus inputs are SWITCHING.   |
| $I_{DD4R}$ | Operating Current - Burst Read<br>One bank active; Continuous read bursts, $CL = CL(\min)$ ; $t_{CK}=\min(t_{CK}); t_{RAS} = t_{RAS,max}$ ; Address and control inputs are SWITCHING; $I_{out} = 0$ mA.  |
| $I_{DD4W}$ | Operating Current - Burst Write<br>One bank active; Continuous write bursts; $t_{CK}=\min(t_{CK})$ ; Address and control inputs are SWITCHING; Data bus inputs are SWITCHING.  |
| $I_{DD5B}$ | Burst Auto Refresh Current<br>Refresh command at $t_{RFC}=\min(t_{RFC}); t_{CK}=\min(t_{CK})$ ; CKE is HIGH, $\overline{CS}$ is HIGH between all valid commands; Other command and address inputs are SWITCHING; Data bus inputs are SWITCHING.            |
| $I_{DD5D}$ | Distributed Auto Refresh Current<br>$t_{CK}=t_{CKmin}$ ; Refresh command every $t_{REFI}$ ; CKE is HIGH, $\overline{CS}$ is HIGH between valid commands; Other command and address inputs are SWITCHING; Data bus inputs are SWITCHING.                    |



| Symbol    | Parameter/Condition   |
|-----------|---|
| $I_{DD6}$ | Self Refresh Current<br>CKE $\leq \max(V_{IL})$ , external clock off, CK and $\overline{CK}$ LOW; Address and control inputs are STABLE (HIGH); Data Bus inputs are STABLE (HIGH).  |
| $I_{DD7}$ | Operating Bank Interleave Read Current<br>1. 1-CS Mode: All banks interleaving with CL = CL(min); $t_{RCD} = t_{RCDRD}(\text{min})$ ; $t_{RRD} = t_{RRD}(\text{min})$ ; $I_{out}=0$ mA; Address and control inputs are STABLE (HIGH) during DESELECT; Data bus inputs are SWITCHING.<br>2: 2-CS: All banks and all ranks interleaving with CL = CL(min); $t_{RCD} = t_{RCDRD}(\text{min})$ ; $t_{RRD} = t_{RRD}(\text{min})$ ; $t_{RRD\_RR} = t_{RRD\_RR}(\text{min})$ ; $I_{out}=0$ mA; Address and control inputs are STABLE (HIGH) during DESELECT; Data bus inputs are SWITCHING. |

### Notes

1.  $0\text{ }^{\circ}\text{C} \leq T_c \leq 95\text{ }^{\circ}\text{C}$
2. Data Bus consists of DQ, DM, WDQS.
3. Definitions for IDD:  
LOW is defined as  $V_{IN} = 0.4 \times V_{DDQ}$ ; HIGH is defined as  $V_{IN} = V_{DDQ}$ ;  
TABLE is defined as inputs are stable at a HIGH level.  
SWITCHING is defined as inputs are changing between HIGH and LOW every clock cycle for address and control signals, and inputs changing 50% of each data transfer for DQ signals.



## 5.12 AC Timings for HYB18H1G321AF–10/11/14

**TABLE 22**

**Timing Parameters (HYB18H1G321AF–10/11/14)**

| Parameter  | CAS latency | Symbol        | Limit Values  |      |      |      |      |      | Unit     | Note |
|--|-------------|---------------|---|------|------|------|------|------|----------|------|
|  |             |               | -10   |      | -11  |      | -14  |      |          |      |
|  |             |               | min   | max  | min  | max  | min  | max  |          |      |
| <b>Clock and Clock Enable</b>                    |             |               |   |      |      |      |      |      |          |      |
| System frequency                                 | CL = 12     | $f_{CK12}$    | 450   | 1000 | —    | —    | —    | —    | MHz      | 1)   |
|  | CL = 11     | $f_{CK11}$    | 400   | 900  | 400  | 900  | 450  | 700  | MHz      | 2)   |
|  | CL = 9      | $f_{CK9}$     | —   | —    | —    | —    | —    | —    | MHz      | 2)   |
| Clock high level width                           |             | $t_{CH}$      | 0.45  | 0.55 | 0.45 | 0.55 | 0.45 | 0.55 | $t_{CK}$ | 3)   |
| Clock low level width                            |             | $t_{CL}$      | 0.45  | 0.55 | 0.45 | 0.55 | 0.45 | 0.55 | $t_{CK}$ | 3)   |
| Minimum clock half period                        |             | $t_{HP}$      | 0.45  | —    | 0.45 | —    | 0.45 | —    | $t_{CK}$ | 3)4) |
| <b>Command and Address Setup and Hold Timing</b> |             |               |   |      |      |      |      |      |          |      |
| Address/Command input setup time                 |             | $t_{IS}$      | 0.24  | —    | 0.27 | —    | 0.35 | —    | ns       |      |
| Address/Command input hold time                  |             | $t_{IH}$      | 0.24  | —    | 0.27 | —    | 0.35 | —    | ns       |      |
| Address/Command input pulse width                |             | $t_{IPW}$     | 0.7   | —    | 0.7  | —    | 0.7  | —    | $t_{CK}$ | 3)   |
| <b>Mode Register Set Timing</b>                  |             |               |   |      |      |      |      |      |          |      |
| Mode Register Set cycle time                     |             | $t_{MRD}$     | 6   | —    | 6    | —    | 6    | —    | $t_{CK}$ | 5)6) |
| Mode Register Set to READ timing                 |             | $t_{MRDR}$    | 12  | —    | 12   | —    | 12   | —    | $t_{CK}$ | 5)   |
| <b>Row Timing</b>                                |             |               |   |      |      |      |      |      |          |      |
| Row Cycle Time                                   |             | $t_{RC}$      | 37  | —    | 35   | —    | 34   | —    | $t_{CK}$ |      |
| Row Active Time                                  |             | $t_{RAS}$     | 23  | —    | 22   | —    | 22   | —    | $t_{CK}$ | 7)   |
| ACT(a) to ACT(b) Command period                  |             | $t_{RRD}$     | 9   | —    | 8    | —    | 7    | —    | $t_{CK}$ |      |
| ACT(a) to ACT(b) Command period (different rank) |             | $t_{RRD\_RR}$ | —   | —    | 1    | —    | 1    | —    | $t_{CK}$ |      |
| Row Precharge Time                               |             | $t_{RP}$      | 14  | —    | 13   | —    | 12   | —    | $t_{CK}$ |      |
| Row to Column Delay Time for Reads               |             | $t_{RCDRD}$   | 13  | —    | 12   | —    | 11   | —    | $t_{CK}$ |      |
| Row to Column Delay Time for Writes              |             | $t_{RCDWR}$   | $t_{RCDWR(\text{Min})} = \max(t_{RCDRD(\text{Min})} - (WL + 1) \times t_{CK}; 2 \times t_{CK})$ |      |      |      |      |      | $t_{CK}$ |      |
| Four Active Windows within Rank                  |             | $t_{FAW}$     | 36  | —    | 35   | —    | 35   | —    | $t_{CK}$ |      |
| <b>Column Timing</b>                             |             |               |   |      |      |      |      |      |          |      |
| CAS(a) to CAS(b) Command period                  |             | $t_{CCD}$     | BL/2  | —    | BL/2 | —    | BL/2 | —    | $t_{CK}$ | 8)   |
| Internal write to Read Command Delay             |             | $t_{WTR}$     | 7   | —    | 6    | —    | 6    | —    | $t_{CK}$ | 9)   |



| Parameter   | CAS latency | Symbol        | Limit Values                        |             |             |             |             |             | Unit     | Note           |
|---|-------------|---------------|-------------------------------------|-------------|-------------|-------------|-------------|-------------|----------|----------------|
|   |             |               | -10                                 |             | -11         |             | -14         |             |          |                |
|   |             |               | min                                 | max         | min         | max         | min         | max         |          |                |
| Internal write to Read Command Delay (different rank)         |             | $t_{WTR\_RR}$ | —                                   | —           | BL/2 – 1    | —           | BL/2 – 1    | —           | $t_{CK}$ | <sup>10)</sup> |
| Write to Write Command Delay (different rank)                 |             | $t_{WTW\_RR}$ | —                                   | —           | BL/2        | —           | BL/2        | —           | $t_{CK}$ | <sup>11)</sup> |
| Read to Write command delay                                   |             | $t_{RTW}$     | $t_{RTW(min)} = CL + BL/2 + 2 - WL$ |             |             |             |             |             | $t_{CK}$ | <sup>12)</sup> |
| Read to Read Command Delay (different rank)                   |             | $t_{RTR\_RR}$ | —                                   | —           | 2           | —           | 2           | —           | $t_{CK}$ | <sup>11)</sup> |
| <b>Write Cycle Timing Parameters for Data and Data Strobe</b> |             |               |                                     |             |             |             |             |             |          |                |
| Write command to first WDQS latching transition               |             | $t_{DQSS}$    | WL-0.25                             | WL+0.25     | WL-0.25     | WL+0.25     | WL-0.25     | WL+0.25     | $t_{CK}$ |                |
| Data-in and Data Mask to WDQS Setup Time                      |             | $t_{DS}$      | 0.14                                | —           | 0.15        | —           | 0.18        | —           | ns       |                |
| Data-in and Data Mask to WDQS Hold Time                       |             | $t_{DH}$      | 0.14                                | —           | 0.15        | —           | 0.18        | —           | ns       |                |
| Data-in and DM input pulse width (each input)                 |             | $t_{DIPW}$    | 0.40                                | —           | 0.40        | —           | 0.40        | —           | $t_{CK}$ |                |
| DQS input low pulse width                                     |             | $t_{DQSL}$    | 0.40                                | —           | 0.40        | —           | 0.40        | —           | $t_{CK}$ |                |
| DQS input high pulse width                                    |             | $t_{DQSH}$    | 0.40                                | —           | 0.40        | —           | 0.40        | —           | $t_{CK}$ |                |
| DQS Write Preamble Time                                       |             | $t_{WPRE}$    | 0.75                                | 1.25        | 0.75        | 1.25        | 0.75        | 1.25        | $t_{CK}$ |                |
| DQS Write Postamble Time                                      |             | $t_{WPST}$    | 0.75                                | 1.25        | 0.75        | 1.25        | 0.75        | 1.25        | $t_{CK}$ |                |
| Write Recovery Time   |             | $t_{WR}$      | 13                                  | —           | 13          | —           | 10          | —           | $t_{CK}$ | <sup>9)</sup>  |
| <b>Read Cycle Timing Parameters for Data and Data Strobe</b>  |             |               |                                     |             |             |             |             |             |          |                |
| Data Access Time from Clock                                   |             | $t_{AC}$      | -0.21                               | 0.21        | -0.22       | 0.22        | -0.25       | 0.25        | ns       |                |
| Read Preamble   |             | $t_{RPRE}$    | 0.75                                | 1.25        | 0.75        | 1.25        | 0.75        | 1.25        | $t_{CK}$ | <sup>3)</sup>  |
| Read Postamble  |             | $t_{RPST}$    | 0.75                                | 1.25        | 0.75        | 1.25        | 0.75        | 1.25        | $t_{CK}$ |                |
| Data-out high impedance time from CLK                         |             | $t_{HZ}$      | $t_{ACmin}$                         | $t_{ACmax}$ | $t_{ACmin}$ | $t_{ACmax}$ | $t_{ACmin}$ | $t_{ACmax}$ | ns       |                |
| Data-out low impedance time from CLK                          |             | $t_{LZ}$      | $t_{ACmin}$                         | $t_{ACmax}$ | $t_{ACmin}$ | $t_{ACmax}$ | $t_{ACmin}$ | $t_{ACmax}$ | ns       |                |
| DQS edge to Clock edge skew                                   |             | $t_{DQSCK}$   | -0.21                               | 0.21        | -0.22       | 0.22        | -0.25       | 0.25        | ns       |                |
| DQS edge to output data edge skew                             |             | $t_{DQSQ}$    | —                                   | 0.120       | —           | 0.130       | —           | 0.160       | ns       | <sup>13)</sup> |
| Data hold skew factor   |             | $t_{QHS}$     | —                                   | 0.120       | —           | 0.130       | —           | 0.160       | ns       |                |
| Data output hold time from DQS                                |             | $t_{QH}$      | $t_{HP} - t_{QHS}$                  |             |             |             |             |             | ns       |                |
| <b>Refresh/Power Down Timing</b>                              |             |               |                                     |             |             |             |             |             |          |                |
| Refresh Period (8192 cycles)                                  |             | $t_{REF}$     | —                                   | 32          | —           | 32          | —           | 32          | ms       |                |
| Average periodic Auto Refresh interval                        |             | $t_{REFI}$    | 3.9                                 |             | 3.9         |             | 3.9         |             | $\mu$ s  |                |
| Delay from AREF to next ACT/AREF                              |             | $t_{RFC}$     | 52.0                                | —           | 52.0        | —           | 59          | —           | ns       |                |
| Self Refresh Exit time  |             | $t_{XSC}$     | 1000                                | —           | 1000        | —           | 1000        | —           | $t_{CK}$ |                |





| Parameter                          | CAS latency | Symbol       | Limit Values |     |     |     |     |     | Unit     | Note |
|------------------------------------|-------------|--------------|--------------|-----|-----|-----|-----|-----|----------|------|
|                                    |             |              | -10          |     | -11 |     | -14 |     |          |      |
|                                    |             |              | min          | max | min | max | min | max |          |      |
| Power Down Exit time               |             | $t_{XPN}$    | 7            | —   | 7   | —   | 8   | —   | $t_{CK}$ |      |
| <b>Other Timing Parameters</b>     |             |              |              |     |     |     |     |     |          |      |
| RES to CKE setup timing            |             | $t_{ATS}$    | 10           | —   | 10  | —   | 10  | —   | ns       |      |
| RES to CKE hold timing             |             | $t_{ATH}$    | 10           | —   | 10  | —   | 10  | —   | ns       |      |
| Termination update Keep Out timing |             | $t_{KO}$     | 10           | —   | 10  | —   | 10  | —   | ns       |      |
| Rev. ID EMRS to DQ on timing       |             | $t_{RIDon}$  | —            | 20  | —   | 20  | —   | 20  | ns       |      |
| REV. ID EMRS to DQ off timing      |             | $t_{RIDoff}$ | —            | 20  | —   | 20  | —   | 20  | ns       |      |

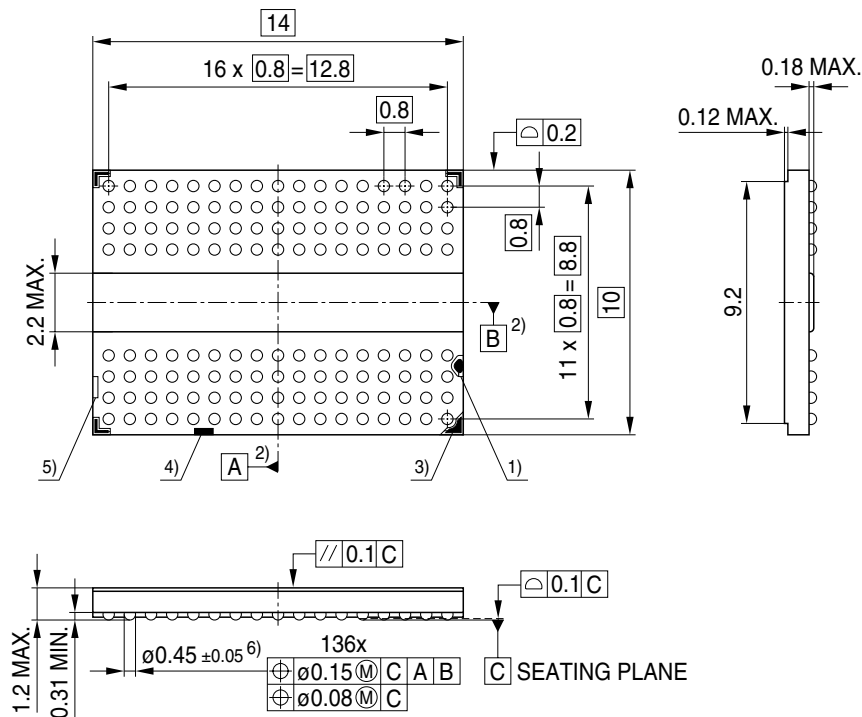
- 1) At 1000 MHz speed grade only 1-CS mode is supported
- 2) DLL on mode
- 3) Timing is calculated for a clock frequency of 700 MHz
- 4)  $t_{HP}$  is the lesser of  $t_{CL}$  minimum and  $t_{CH}$  minimum actually applied to the device CLK,  $\overline{CLK}$  inputs
- 5) This value of  $t_{MRD}$  applies only to the case where the "DLL reset" bit is not activated.
- 6)  $t_{MRD}$  is defined from MRS to any other command then READ.
- 7)  $t_{RAS,max}$  is  $8 \times t_{REFi}$
- 8)  $t_{CCD}$  is either for gapless consecutive reads or gapless consecutive writes.
- 9) WTR and  $t_{WR}$  start at the first rising edge of CLK after the last valid (falling) WDQS edge of the slowest WDQS signal.
- 10) WTR and  $t_{WR}$  start at the first rising edge of CLK after the last valid (falling) WDQS edge of the slowest WDQS signal.
- 11) This parameter is defined for commands issued to rank m following rank n where  $m \neq n$ . For all other type of access, standard timing parameters do apply.
- 12) Please round up  $t_{RTW}$  to the next integer of  $t_{CK}$ .
- 13) This parameter is defined per byte



# 6 Package

## 6.1 Package Outline

**FIGURE 20**  
Package Outline PG-TFBGA-136-059



- Lead free solder balls (green solder balls)
- 1) Bad unit marking (BUM) (light = good)
  - 2) Middle of packages edges
  - 3) Package orientation mark A1
  - 4) SBA-fiducial (solder ball attach)
  - 5) Bare core area
  - 6) Solder ball diameter refers to post reflow conditions

FPO\_PG-TFBGA\_-136-059

Note: The package is conforming with JEDEC MO-207i, VAR DR-z.



## 6.2 Package Thermal Characteristics

**TABLE 23**  
**PG-TFBGA-136 Package Thermal Resistances**

| JEDEC Board | Theta <sub>jA</sub> |       |       |       |       |       | Theta <sub>jB</sub> | Theta <sub>jC</sub> |
|-------------|---------------------|-------|-------|-------|-------|-------|---------------------|---------------------|
|             | 1s0p                |       |       | 2s0p  |       |       |                     |                     |
| Air Flow    | 0 m/s               | 1 m/s | 3 m/s | 0 m/s | 1 m/s | 3 m/s | -                   | -                   |
| K/W         | 40                  | 32    | 27    | 22    | 19    | 17    | 5                   | 2                   |

### Notes

1. *Theta<sub>jA</sub>*: Junction to Ambient thermal resistance. The values have been obtained by simulation using the conditions stated in the JEDEC JESD-51 standard.
2. *Theta<sub>jB</sub>*: Junction to Board thermal resistance. The value has been obtained by simulation.
3. *Theta<sub>jC</sub>*: Junction to Case thermal resistance. The value has been obtained by simulation.



# List of Illustrations

|           |  |    |
|-----------|--|----|
| Figure 1  | Ballout 1Gbit GDDR3 Graphics RAM in 1-CS mode in non Merged Mode(Top View; MF = Low) . . . . . | 5  |
| Figure 2  | Ballout 1Gbit GDDR3 Graphics RAM in 2-CS mode in non Merged Mode(Top View; MF = Low) . . . . . | 6  |
| Figure 3  | Ballout 1Gbit GDDR3 Graphics RAM in Merged Mode . . . . .                                      | 7  |
| Figure 4  | Mode Register Set Command . . . . .  | 15 |
| Figure 5  | Mode Register Bitmap for Mid-Range-Speed Application . . . . .                                 | 16 |
| Figure 6  | Mode Register Bitmap for High-Speed Application . . . . .                                      | 17 |
| Figure 7  | Mode Register Set Timing . . . . .   | 17 |
| Figure 8  | Extended Mode Register Set Command . . . . .   | 20 |
| Figure 9  | Extended Mode Register Bitmap for Mid-Range-Speed Application . . . . .                        | 21 |
| Figure 10 | Extended Mode Register Bitmap for High-Speed Application . . . . .                             | 22 |
| Figure 11 | Extended Mode Register Set Timing . . . . .  | 22 |
| Figure 12 | Timing of Vendor Code and Revision ID Generation on DQ[7:0] . . . . .                          | 24 |
| Figure 13 | Extended Mode Register 2 Set Command . . . . .   | 25 |
| Figure 14 | Extended Mode Register 2 Bitmap . . . . .  | 26 |
| Figure 15 | Output Test Circuit . . . . .  | 30 |
| Figure 16 | 40 Ohm Driver Pull-Down and Pull-Up Characteristics . . . . .                                  | 31 |
| Figure 17 | 60 Ohm Active Termination Characteristic . . . . .   | 33 |
| Figure 18 | 120 Ohm Active Termination Characteristic . . . . .  | 34 |
| Figure 19 | 240 Ohm Active Termination Characteristic . . . . .  | 35 |
| Figure 20 | Package Outline PG-TFBGA-136-059 . . . . .   | 42 |



# List of Tables

|          |  |    |
|----------|--|----|
| Table 1  | Ordering Information . . . . .   | 3  |
| Table 2  | Ball Description . . . . .   | 8  |
| Table 3  | Ball Assignment with Mirror . . . . .  | 10 |
| Table 4  | Function Truth Table I . . . . .   | 11 |
| Table 5  | Function Truth Table II (CKE Table) . . . . .  | 12 |
| Table 6  | Boundary Scan Exit Order . . . . .   | 13 |
| Table 7  | Scan Pin Description . . . . .   | 14 |
| Table 8  | Burst Definition . . . . .   | 18 |
| Table 9  | Revision ID and Vendor Code . . . . .  | 23 |
| Table 10 | Operation Mode Function of defined Merged Mode . . . . .   | 24 |
| Table 11 | Absolute Maximum Ratings . . . . .   | 28 |
| Table 12 | Power & DC Operation Conditions ( $0\text{ }^{\circ}\text{C} \leq T_c \leq 95\text{ }^{\circ}\text{C}$ ) . . . . .               | 28 |
| Table 13 | DC & AC Logic Input Levels ( $0\text{ }^{\circ}\text{C} \leq T_c \leq 95\text{ }^{\circ}\text{C}$ ) . . . . .                    | 29 |
| Table 14 | Differential Clock DC and AC Input conditions ( $0\text{ }^{\circ}\text{C} \leq T_c \leq 95\text{ }^{\circ}\text{C}$ ) . . . . . | 30 |
| Table 15 | Pin Capacitances (VDDQ = 1.8 V, TA = 25°C, f = 1 MHz) . . . . .  | 31 |
| Table 16 | Programmed Driver IV Characteristics at 40 Ohm . . . . .   | 32 |
| Table 17 | Programmed Terminator Characteristics at 60 Ohm . . . . .  | 33 |
| Table 18 | Programmed Terminator Characteristics of 120 Ohm . . . . .   | 34 |
| Table 19 | Programmed Terminator Characteristics at 240 Ohm . . . . .   | 35 |
| Table 20 | Operating Current Ratings ( $0\text{ }^{\circ}\text{C} \leq T_c \leq 95\text{ }^{\circ}\text{C}$ ) . . . . .                     | 36 |
| Table 21 | Operating Current Measurement Conditions . . . . .   | 37 |
| Table 22 | Timing Parameters (HYB18H1G321AF–10/11/14 ) . . . . .  | 39 |
| Table 23 | PG-TFBGA-136 Package Thermal Resistances . . . . .   | 43 |



# Contents

|          |   |           |
|----------|---|-----------|
| <b>1</b> | <b>Overview</b> .....                                       | <b>3</b>  |
| 1.1      | Features .....  | 3         |
| 1.2      | Description .....   | 4         |
| <b>2</b> | <b>Configuration</b> .....                                  | <b>5</b>  |
| 2.1      | Ball Definition and Description .....                       | 8         |
| 2.2      | Mirror Function .....                                       | 9         |
| 2.3      | Truth Tables .....  | 11        |
| 2.3.1    | Function Truth Table for more than one Activated Bank ..... | 11        |
| 2.4      | Function Truth Table for CKE .....                          | 12        |
| <b>3</b> | <b>Boundary Scan</b> .....                                  | <b>13</b> |
| 3.1      | General Description .....                                   | 13        |
| 3.2      | Disabling the scan feature .....                            | 13        |
| <b>4</b> | <b>Functional Description</b> .....                         | <b>15</b> |
| 4.1      | Mode Register Set Command (MRS) .....                       | 15        |
| 4.1.1    | Burst length .....  | 18        |
| 4.1.2    | Burst type .....  | 18        |
| 4.1.3    | CAS Latency .....   | 18        |
| 4.1.4    | Write Latency .....   | 18        |
| 4.1.5    | Test mode .....   | 18        |
| 4.1.6    | DLL Reset .....   | 19        |
| 4.2      | Extended Mode Register Set Command (EMRS1) .....            | 20        |
| 4.2.1    | DLL enable .....  | 23        |
| 4.2.2    | WR .....  | 23        |
| 4.2.3    | Termination Rtt .....                                       | 23        |
| 4.2.4    | Output Driver Impedance .....                               | 23        |
| 4.2.5    | Vendor Code and Revision Identification .....               | 23        |
| 4.2.6    | Address command termination .....                           | 24        |
| 4.2.7    | Operation mode .....  | 24        |
| 4.3      | Extended Mode Register 2 Set Command (EMRS2) .....          | 25        |
| 4.3.1    | App Mode .....  | 26        |
| 4.3.2    | OCD Pull Down Offset .....                                  | 26        |
| 4.3.3    | OCD Termination Pull Up Offset .....                        | 26        |
| 4.3.4    | Merged Mode .....   | 27        |
| 4.3.5    | Self Refresh .....  | 27        |
| <b>5</b> | <b>Electrical Characteristics</b> .....                     | <b>28</b> |
| 5.1      | Absolute Maximum Ratings and Operation Conditions .....     | 28        |
| 5.2      | DC Operation Conditions .....                               | 28        |
| 5.2.1    | Recommended Power & DC Operation Conditions .....           | 28        |
| 5.3      | DC & AC Logic Input Levels .....                            | 29        |
| 5.4      | Differential Clock DC and AC Levels .....                   | 30        |
| 5.5      | Output Test Conditions .....                                | 30        |
| 5.6      | Pin Capacitances .....                                      | 31        |
| 5.7      | Driver current characteristics .....                        | 31        |
| 5.7.1    | Driver IV characteristics at 40 Ohms .....                  | 31        |
| 5.7.2    | Termination IV Characteristic at 60 Ohms .....              | 32        |
| 5.8      | Termination IV Characteristic at 120 Ohms .....             | 34        |
| 5.9      | Termination IV Characteristic at 240 Ohms .....             | 35        |
| 5.10     | Operating Currents .....                                    | 36        |



HYB18H1G321AF–10/11/14  
1-Gbit GDDR3

|          |   |           |
|----------|---|-----------|
| 5.10.1   | Operating Current Ratings for HYB18H1G321AF–10/11/14..... | 36        |
| 5.11     | Operating Current Measurement Conditions .....            | 37        |
| 5.12     | AC Timings for HYB18H1G321AF–10/11/14 .....               | 39        |
| <b>6</b> | <b>Package</b> .....                                      | <b>42</b> |
| 6.1      | Package Outline .....                                     | 42        |
| 6.2      | Package Thermal Characteristics .....                     | 43        |

**Edition 2007-10**  
**Published by Qimonda AG**  
**Gustav-Heinemann-Ring 212**  
**D-81739 München, Germany**  
**© Qimonda AG 2007.**  
**All Rights Reserved.**

#### **Legal Disclaimer**

The information given in this Internet Data Sheet shall in no event be regarded as a guarantee of conditions or characteristics ("Beschaffenheitsgarantie"). With respect to any examples or hints given herein, any typical values stated herein and/or any information regarding the application of the device, Qimonda hereby disclaims any and all warranties and liabilities of any kind, including without limitation warranties of non-infringement of intellectual property rights of any third party.

#### **Information**

For further information on technology, delivery terms and conditions and prices please contact your nearest Qimonda Office.

#### **Warnings**

Due to technical requirements components may contain dangerous substances. For information on the types in question please contact your nearest Qimonda Office.

Qimonda Components may only be used in life-support devices or systems with the express written approval of Qimonda, if a failure of such components can reasonably be expected to cause the failure of that life-support device or system, or to affect the safety or effectiveness of that device or system. Life support devices or systems are intended to be implanted in the human body, or to support and/or maintain and sustain and/or protect human life. If they fail, it is reasonable to assume that the health of the user or other persons may be endangered.