

# QUADRATURE HYBRID MODEL SLQ-303

**3:1 BANDWIDTH**

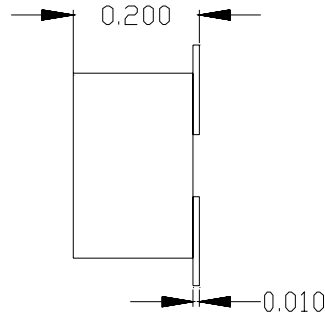
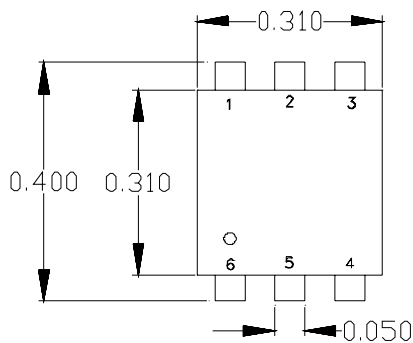
**30 - 90 MHz**

## SPECIFICATIONS

<b>Operating Frequency:</b>	30 - 90 MHz	<b>VSWR :</b>	1.2:1 (Typ)
<b>Insertion Loss:</b>	0.3 dB (Typ)/0.6 dB (Max)	<b>Impedance:</b>	50 Ohms
<b>Isolation:</b>	23 dB (Typ)/18 dB (Min)	<b>Power Rating:</b>	1 Watt (Max)
<b>Amplitude Unbalance:</b>	0.8 dB (Typ)/1.2 dB (Max)	<b>Operating Temp. Range:</b>	-20° to +70°C
<b>Phase Unbalance:</b>	1° (Typ)/ 3° (Max)		

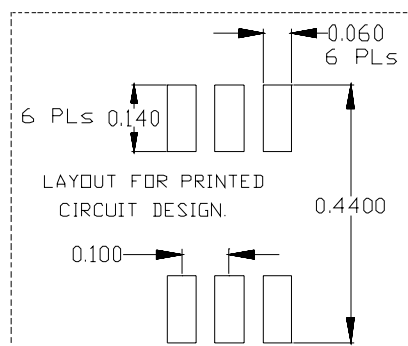
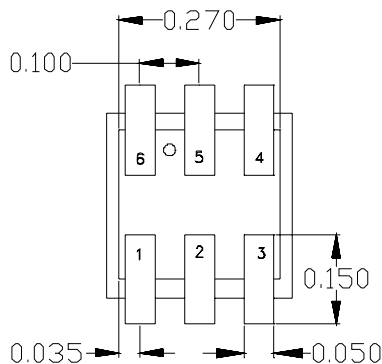


**MECHANICAL OUTLINE: 159**



PIN-OUT	
Input	6
+90° Output	1
0° Output	2
Isolated*	5
Ground	3,4

\*Terminate Isolated port in 50 Ohms



# QUADRATURE HYBRID MODEL SLQ-303

3:1 BANDWIDTH

30 - 90 MHz

## PERFORMANCE PLOTS

