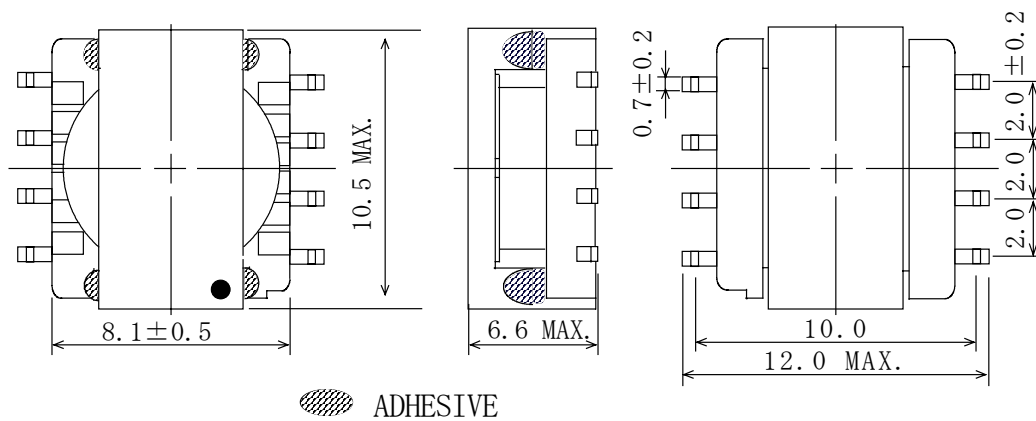
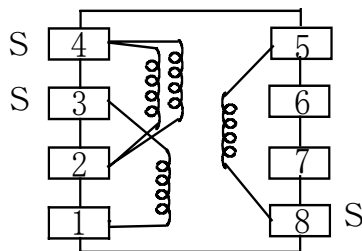


Type: CER95
◆ Product Description

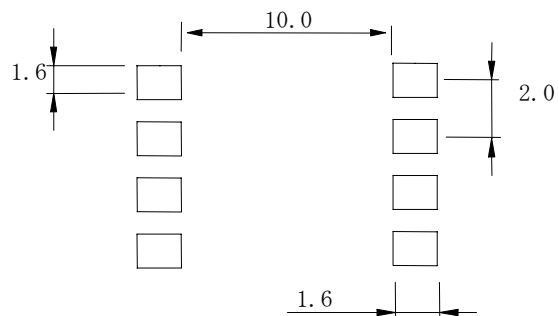
- 10.5×8.6mm Max.(L×W), 6.6mm Max. Height.
- In addition to the typical versions of parameters shown here, custom parameters are available to meet your exact requirements.


◆ Feature

- Max. Operating frequency 500KHz,Max. Operating Power 3.0W(500kHz).
- Ideally used in Portable equipment.
- RoHS Compliance.

◆ Dimensions (mm)

◆ Schematics (Bottom)


“S” indicates winding start.

◆ Land Pattern (mm)

◆ Specification

Sample No.	Inductance (4-2) 100kHz/0.1V	D.C.R.(4-2) Max.	Leakage Inductance(4-2) 100kHz/0.1V	Turns ratio (4-2):(8-5):(3-1)	Hi-pot (1,2,3,4-5,8)
PS05-030	430 μ H \pm 25%	700m Ω	5 μ H Max.	1:0.33:0.33	DC1500V/1s