

ZXMP62M832

MPPS™ Miniature Package Power Solutions DUAL 20V P-CHANNEL ENHANCEMENT MODE MOSFET

SUMMARY

P-Channel $V_{(BR)DSS} = -20V$; $R_{DS(ON)} = 0.6\Omega$; $I_D = -1.0A$

DESCRIPTION

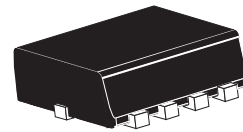
Packaged in the new innovative 3mm x 2mm MLP(Micro Leaded Package) outline this dual 30V N channel Trench MOSFET utilizes a unique structure combining the benefits of Low on-resistance with fast switching speed. This makes them ideal for high efficiency, low voltage power management applications. Users will also gain several other **key benefits**:

Performance capability equivalent to much larger packages

Improved circuit efficiency & power levels

PCB area and device placement savings

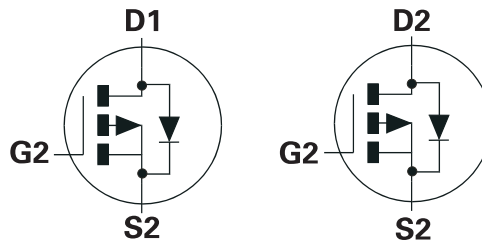
Reduced component count



3mm x 2mm Dual Die MLP

FEATURES

- Low On - Resistance
- Fast switching speed
- Low threshold
- Low gate drive
- 3mm x 2mm MLP



APPLICATIONS

- DC-DC Converters
- Power Management Functions
- Disconnection switches
- Motor Control

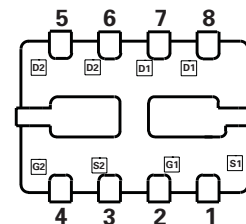
ORDERING INFORMATION

DEVICE	REEL	TAPE WIDTH	QUANTITY PER REEL
ZXMP62M832TA	7"	8mm	3000 units

DEVICE MARKING

DPA

PINOUT



3 x 2 Dual MLP
underside view

ZXMP62M832

ABSOLUTE MAXIMUM RATINGS.

PARAMETER	SYMBOL	P-Channel	UNIT
Drain-Source Voltage	V_{DS}	-20	V
Gate-Source Voltage	V_{GS}	± 12	V
Continuous Drain Current @ $V_{GS}=10V$; $T_A=25^\circ C$ (b)(f) @ $V_{GS}=10V$; $T_A=70^\circ C$ (b)(f) @ $V_{GS}=10V$; $T_A=25^\circ C$ (a)(f)	I_D	-1.6 -1.3 -1.3	A A A
Pulsed Drain Current	I_{DM}	-5.6	A
Continuous Source Current (Body Diode)(b)(f)	I_S	-2.7	A
Pulsed Source Current (Body Diode)	I_{SM}	-5.6	A
Power Dissipation at $T_A=25^\circ C$ (a)(f) Linear Derating Factor	P_D	1.5 12	W mW/ $^\circ C$
Power Dissipation at $T_A=25^\circ C$ (b)(f) Linear Derating Factor	P_D	2.45 19.6	W mW/ $^\circ C$
Power Dissipation at $T_A=25^\circ C$ (c)(f) Linear Derating Factor	P_D	1 8	W mW/ $^\circ C$
Power Dissipation at $T_A=25^\circ C$ (d)(f) Linear Derating Factor	P_D	1.13 8	W mW/ $^\circ C$
Power Dissipation at $T_A=25^\circ C$ (d)(g) Linear Derating Factor	P_D	1.7 13.6	W mW/ $^\circ C$
Power Dissipation at $T_A=25^\circ C$ (e)(g) Linear Derating Factor	P_D	3 24	W mW/ $^\circ C$
Operating and Storage Temperature Range	$T_j; T_{stg}$	-55 to +150	$^\circ C$

THERMAL RESISTANCE

PARAMETER	SYMBOL	VALUE	UNIT
Junction to Ambient (a)(f)	$R_{\theta JA}$	83.3	$^\circ C/W$
Junction to Ambient (b)(f)	$R_{\theta JA}$	51	$^\circ C/W$
Junction to Ambient (c)(f)	$R_{\theta JA}$	125	$^\circ C/W$
Junction to Ambient (d)(f)	$R_{\theta JA}$	111	$^\circ C/W$
Junction to Ambient (d)(g)	$R_{\theta JA}$	73.5	$^\circ C/W$
Junction to Ambient (e)(g)	$R_{\theta JA}$	41.7	$^\circ C/W$

Notes

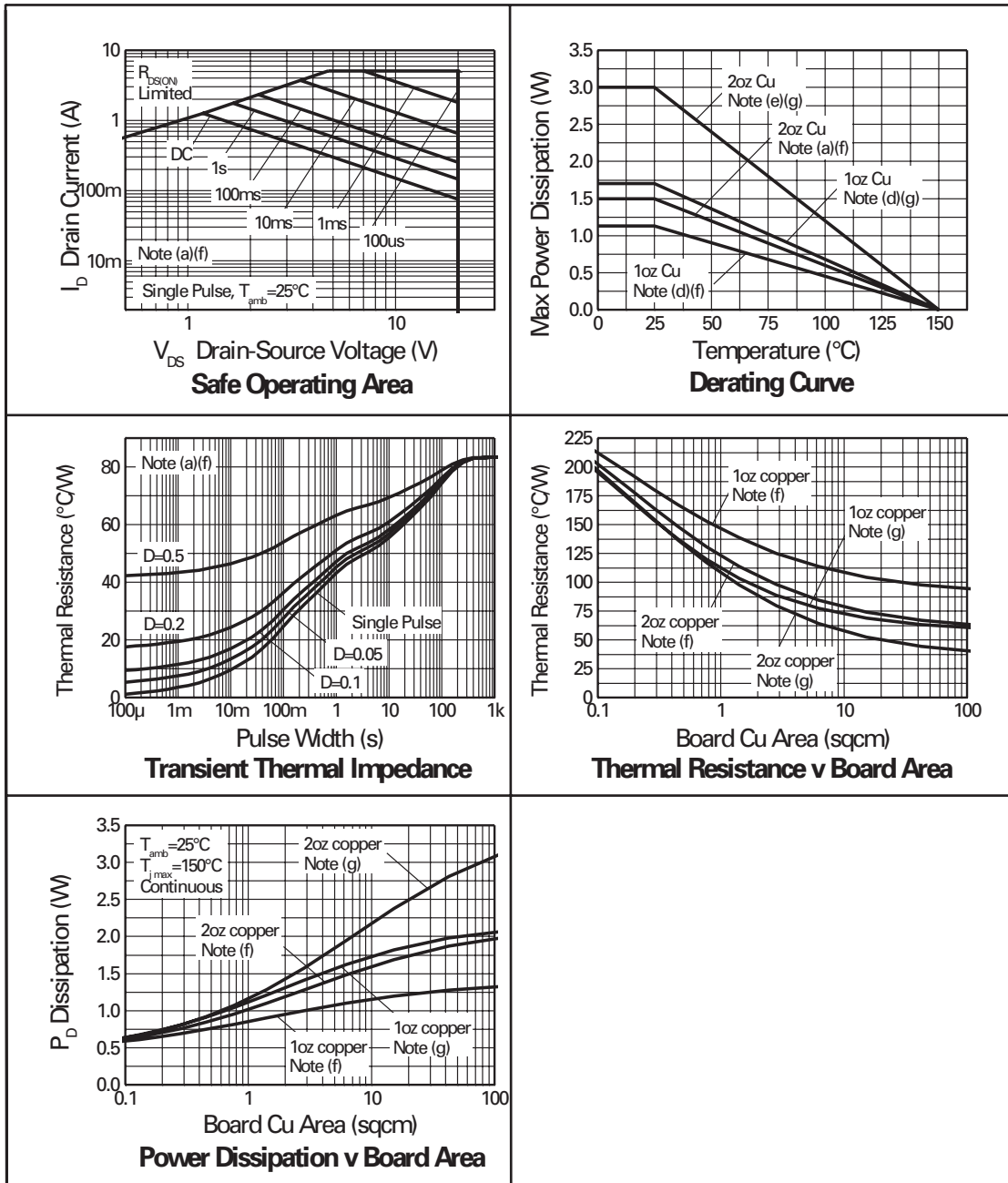
- (a) For a dual device surface mounted on 8 sq cm single sided 2oz copper on FR4 PCB, in still air conditions **with all exposed pads attached**. The copper are is split down the centre line into two separate areas with one half connected to each half of the dual device.
- (b) Measured at $t < 5$ secs for a dual device surface mounted on 8 sq cm single sided 2oz copper on FR4 PCB, in still air conditions **with all exposed pads attached**. The copper are is split down the centre line into two separate areas with one half connected to each half of the dual device.
- (c) For a dual device surface mounted on 8 sq cm single sided 2oz copper on FR4 PCB, in still air conditions **with minimal lead connections only**.
- (d) For a dual device surface mounted on 10 sq cm single sided 1oz copper on FR4 PCB, in still air conditions **with all exposed pads attached attached**. The copper are is split down the centre line into two separate areas with one half connected to each half of the dual device.
- (e) For a dual device surface mounted on 85 sq cm single sided 2oz copper on FR4 PCB, in still air conditions **with all exposed pads attached attached**. The copper are is split down the centre line into two separate areas with one half connected to each half of the dual device.
- (f) For a dual device with one active die.
- (g) For dual device with 2 active die running at equal power.
- (h) Repetitive rating - pulse width limited by max junction temperature. Refer to Transient Thermal Impedance graph.
- (i) The minimum copper dimensions required for mounting are no smaller than the exposed metal pads on the base if the device as shown in the package dimensions data. The thermal resistance for a dual device mounted on 1.5mm thick FR4 board using minimum copper 1 oz weight, 1mm wide tracks and one half of the device active is $R_{th} = 250^\circ C/W$ giving a power rating of $P_{tot} = 500mW$.



PROVISIONAL ISSUE A - MAY 2002

ZXMP62M832

TYPICAL CHARACTERISTICS



ZXMP62M832

ELECTRICAL CHARACTERISTICS (at $T_{amb} = 25^{\circ}\text{C}$ unless otherwise stated).

PARAMETER	SYMBOL	MIN.	TYP.	MAX.	UNIT	CONDITIONS.
STATIC						
Drain-Source Breakdown Voltage	$V_{(BR)DSS}$	-20			V	$I_D = -250\mu\text{A}$, $V_{GS} = 0\text{V}$
Zero Gate Voltage Drain Current	I_{DSS}			-1	μA	$V_{DS} = -20\text{V}$, $V_{GS} = 0\text{V}$
Gate-Body Leakage	I_{GSS}			± 100	nA	$V_{GS} = \pm 12\text{V}$, $V_{DS} = 0\text{V}$
Gate-Source Threshold Voltage	$V_{GS(th)}$	-0.7			V	$I_D = -250\mu\text{A}$, $V_{DS} = V_{GS}$
Static Drain-Source On-State Resistance (1)	$R_{DS(on)}$			0.6 0.9	Ω	$V_{GS} = -4.5\text{V}$, $I_D = -0.61\text{A}$ $V_{GS} = -2.7\text{V}$, $I_D = -0.31\text{A}$
Forward Transconductance (1)(3)	g_{fs}	0.56			S	$V_{DS} = -10\text{V}$, $I_D = -0.31\text{A}$
DYNAMIC (3)						
Input Capacitance	C_{iss}		150		pF	$V_{DS} = -15\text{V}$, $V_{GS} = 0\text{V}$, $f = 1\text{MHz}$
Output Capacitance	C_{oss}		70		pF	
Reverse Transfer Capacitance	C_{rss}		30		pF	
SWITCHING(2) (3)						
Turn-On Delay Time	$t_{d(on)}$		2.9		ns	$V_{DD} = -10\text{V}$, $I_D = -0.93\text{A}$ $R_G = 6.0\Omega$, $R_D = 11\Omega$ (Refer to test circuit)
Rise Time	t_r		6.7		ns	
Turn-Off Delay Time	$t_{d(off)}$		11.2		ns	
Fall Time	t_f		10.2		ns	
Total Gate Charge	Q_g		5.2	3.5	nC	$V_{DS} = -16\text{V}$, $V_{GS} = -4.5\text{V}$, $I_D = -0.61\text{A}$ (Refer to test circuit)
Gate-Source Charge	Q_{gs}			0.5	nC	
Gate-Drain Charge	Q_{gd}			1.5	nC	
SOURCE-DRAIN DIODE						
Diode Forward Voltage (1)	V_{SD}			-0.95	V	$T_J = 25^{\circ}\text{C}$, $I_S = -0.61\text{A}$, $V_{GS} = 0\text{V}$
Reverse Recovery Time (3)	t_{rr}		14.9		ns	$T_J = 25^{\circ}\text{C}$, $I_F = -0.61\text{A}$, $di/dt = 100\text{A}/\mu\text{s}$
Reverse Recovery Charge (3)	Q_{rr}		5.6		nC	

NOTES

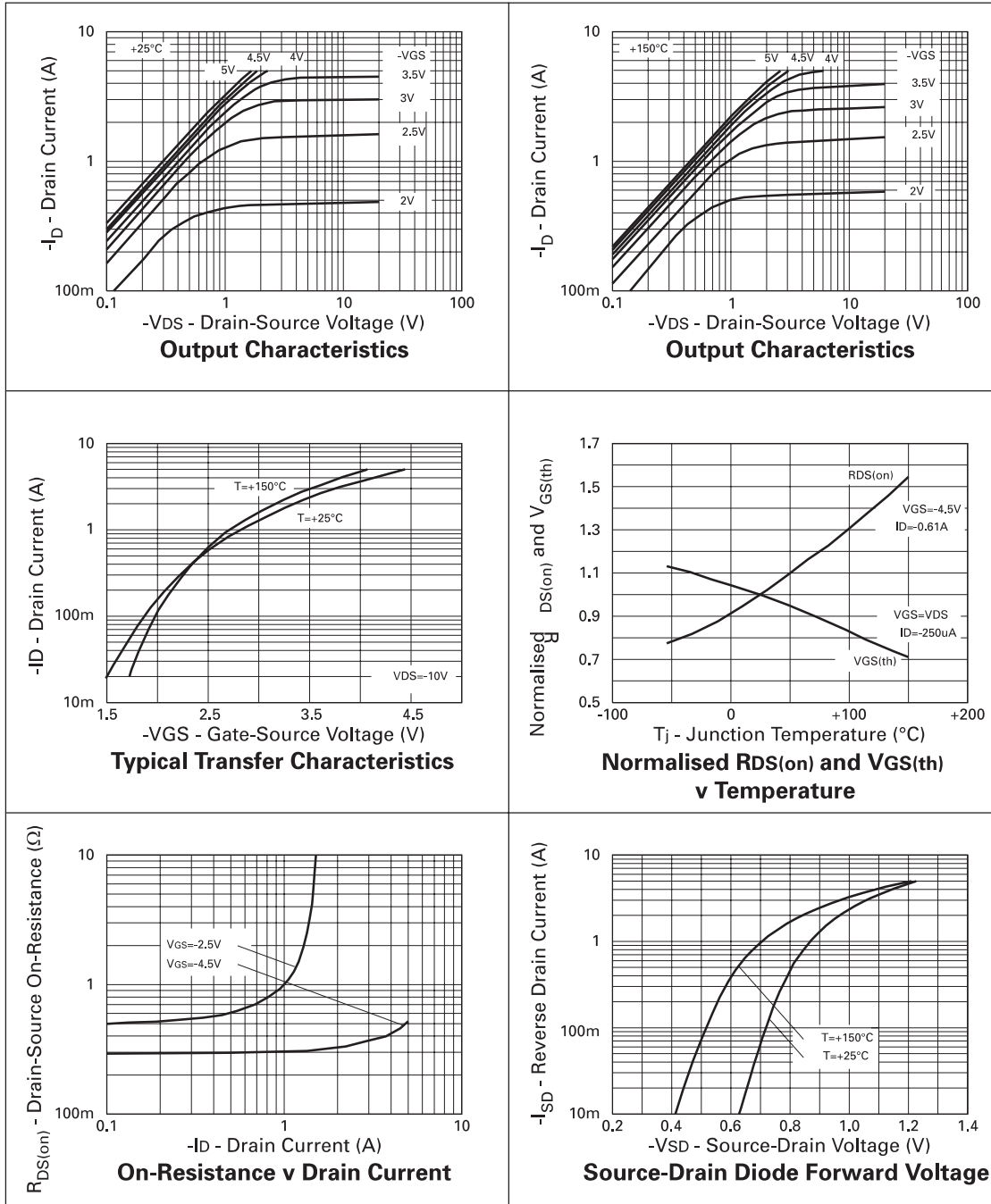
- (1) Measured under pulsed conditions. Width $\leq 300\mu\text{s}$. Duty cycle $\leq 2\%$.
- (2) Switching characteristics are independent of operating junction temperature.
- (3) For design aid only, not subject to production testing.



PROVISIONAL ISSUE A - MAY 2002

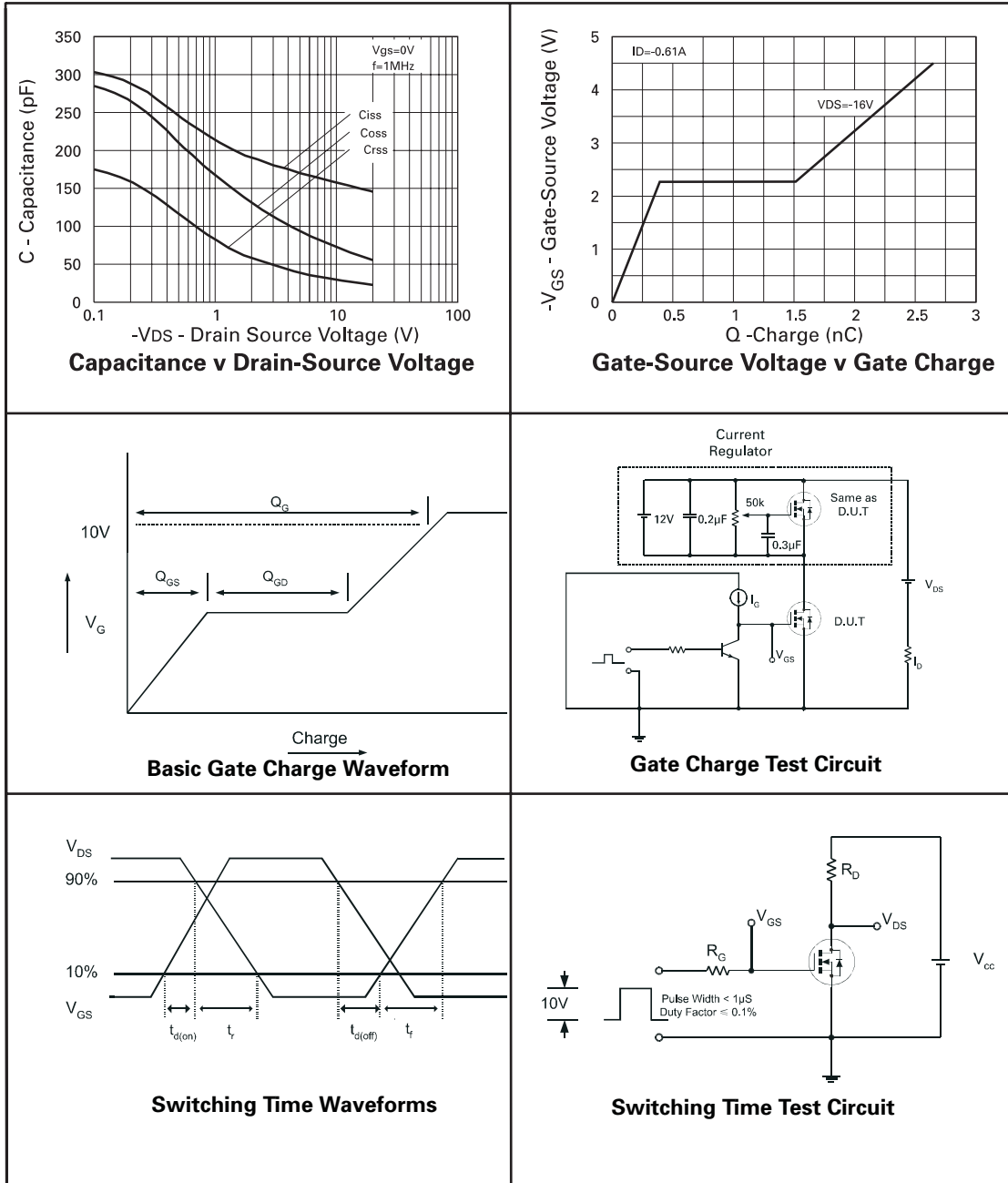
ZXMP62M832

TYPICAL CHARACTERISTICS



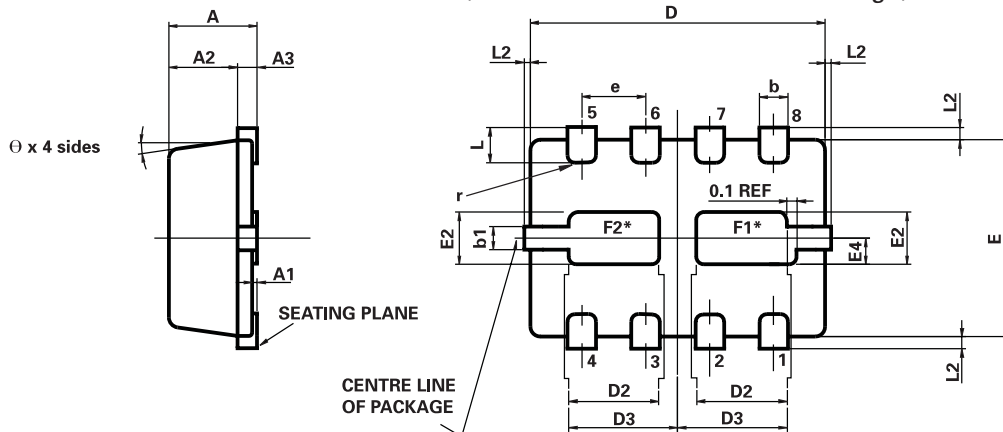
ZXMP62M832

TYPICAL CHARACTERISTICS



ZXMP62M832

MLP832 PACKAGE OUTLINE (3mm x 2mm Micro Leaded Package)



*Exposed Flags. Solder connection to improve thermal dissipation is optional.
 F1 at collector 1 potential
 F2 at collector 2 potential

CONTROLLING DIMENSIONS IN MILLIMETRES
 APPROX. CONVERTED DIMENSIONS IN INCHES

MLP832 PACKAGE DIMENSIONS

DIM	MILLIMETRES		INCHES		DIM	MILLIMETRES		INCHES	
	MIN.	MAX.	MIN.	MAX.		MIN.	MAX.	MIN.	MAX.
A	0.80	1.00	0.031	0.039	e	0.65 REF		0.0787 BSC	
A1	0.00	0.05	0.00	0.002	E	2.00 BSC		0.0256 BSC	
A2	0.65	0.75	0.0255	0.0295	E2	0.43	0.63	0.017	0.0249
A3	0.15	0.25	0.006	0.0098	E4	0.16	0.36	0.006	0.014
b	0.24	0.34	0.009	0.013	L	0.20	0.45	0.0078	0.0157
b1	0.17	0.30	0.0066	0.0118	L2	0.125		0.00	0.005
D	3.00 BSC		0.118 BSC			0.075 BSC		0.0029 BSC	
D2	0.82	1.02	0.032	0.040	Ø	0°	12°	0°	12°
D3	1.01	1.21	0.0397	0.0476					

© Zetex plc 2002

Zetex plc
 Fields New Road
 Chadderton
 Oldham, OL9 8NP
 United Kingdom
 Telephone (44) 161 622 4422
 Fax: (44) 161 622 4420

Zetex GmbH
 Streitfeldstraße 19
 D-81673 München
 Germany
 Telefon: (49) 89 45 49 49 0
 Fax: (49) 89 45 49 49 49

Zetex Inc
 700 Veterans Memorial Hwy
 Hauppauge, NY11788
 USA
 Telephone: (631) 360 2222
 Fax: (631) 360 8222

Zetex (Asia) Ltd
 3701-04 Metroplaza, Tower 1
 Hing Fong Road
 Kwai Fong
 Hong Kong
 Telephone: (852) 26100 611
 Fax: (852) 24250 494

These offices are supported by agents and distributors in major countries world-wide.

This publication is issued to provide outline information only which (unless agreed by the Company in writing) may not be used, applied or reproduced for any purpose or form part of any order or contract or be regarded as a representation relating to the products or services concerned. The Company reserves the right to alter without notice the specification, design, price or conditions of supply of any product or service.

For the latest product information, log on to www.zetex.com

PROVISIONAL ISSUE A - MAY 2002

