

Surface Mount

Power Splitter/Combiners

NEW!

SBTC-2-20 SBTC-2-20L

2 Way-0° 50Ω

200 to 2000 MHz



No Leads



Leads

BLUE CELL™

CASE STYLE: AT790
PRICE: \$3.49 ea. QTY (25)
\$2.69 ea. QTY (1000)

CASE STYLE: AT1029
PRICE: \$3.64 ea. QTY (25)
\$2.84 ea. QTY (1000)

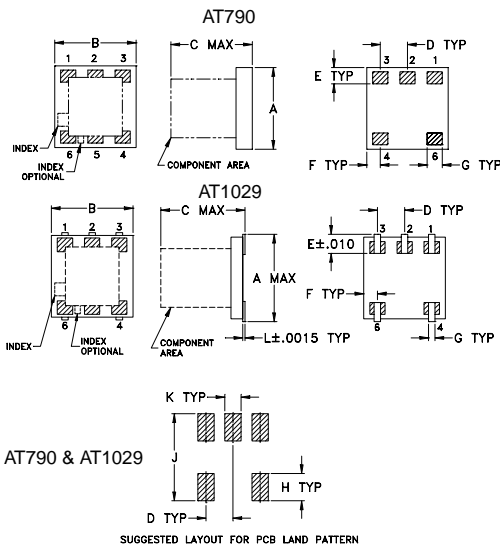
Maximum Ratings

Operating Temperature	-40°C to 85°C
Storage Temperature	-55°C to 100°C
Power Input (as a splitter)	0.5W max.
Internal Dissipation	0.125W max.

Pin Connections

SUM PORT	6
PORT 1	3
PORT 2	4
GROUND	1,2
NOT USED	5

Outline Drawing



Outline Dimensions (inch/mm)

AT790	A	B	C	D	E	F	G	H	J	K	wt.
	.150	.150	.150	.050	.030	.025	.028	.050	.160	.030	grams
	3.81	3.81	3.81	1.27	0.76	0.64	0.71	1.27	4.06	0.76	.10

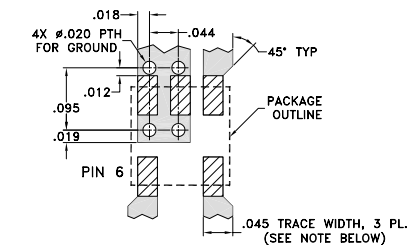
AT1029	A	B	C	D	E	F	G	H	J	K	L	wt.
	.166	.150	.155	.050	.037	.025	.012	.060	.184	.030	.004	grams
	4.22	3.81	3.94	1.27	0.94	0.64	0.30	1.52	4.67	0.76	0.10	.10

Reflow Solder Assembly

Silver-bearing solder (Sn/Pb/Ag 62/36/2%) is recommended; however, tin-lead eutectic (Sn/Pb 63/37%) may be used. For temperature profiles, see Application Note AN-40-004

Demo Board MCL P/N: TB-274

Suggested PCB Layout (PL-152)



NOTE: 1. TRACE WIDTH IS SHOWN FOR ROGERS RO4350 WITH DIELECTRIC THICKNESS 0.020" ± 0.0015", COPPER: 1/2 OZ. EACH SIDE. FOR OTHER MATERIALS TRACE WIDTH MAY NEED TO BE MODIFIED.

2. BOTTOM SIDE OF THE PCB IS CONTINUOUS GROUND PLANE.
- DENOTES PCB COPPER LAYOUT
 - ▨ DENOTES COPPER LAND PATTERN FREE OF SOLDER MASK

Features

- wide band frequency, 200-2000 MHz
- excellent amplitude unbalance, 0.2 dB typ.
- small size, 0.166"x0.15"x0.155"
- temperature stable, BLUE CELL™ base
- solder plated leads for excellent solderability
- small size
- low cost
- patent pending

Applications

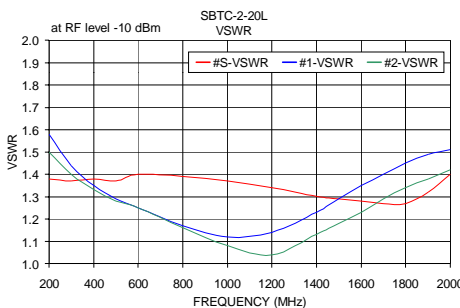
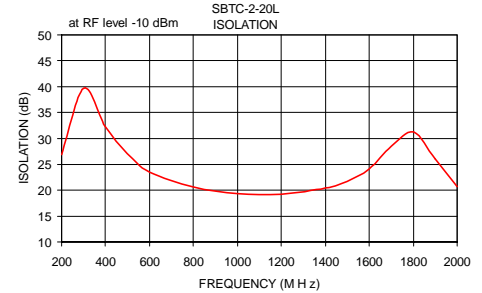
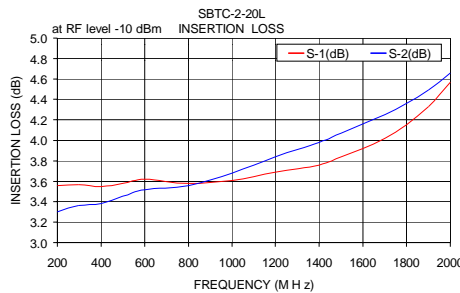
- cellular/GSM
- UHF/VHF receivers/transmitters
- PCN/PCS
- GPS
- VSAT

Splitter Electrical Specifications

FREQ. RANGE (MHz)	ISOLATION (dB)		INSERTION LOSS (dB) ABOVE 3.0 dB		PHASE UNBALANCE (Degrees)	AMPLITUDE UNBALANCE (dB)
	Typ.	Min.	Typ.	Max.	Max.	Max.
200-2000	20	14	0.8	2.2	10	0.8
800-1000	22	16	0.5	0.9	3	0.5
500-1500	22	15	0.5	1.5	5	0.7
1800-2000	20	15	1.2	2.2	10	0.6

Typical Performance Data

Frequency (MHz)	Insertion Loss (dB) S-1	Insertion Loss (dB) S-2	Amplitude Unbalance (dB)	Isolation (dB)	Phase Unbalance (deg.)	VSWR S	VSWR 1	VSWR 2
200.00	3.56	3.30	0.26	26.85	1.44	1.38	1.58	1.50
300.00	3.57	3.36	0.21	39.72	0.88	1.37	1.44	1.40
400.00	3.55	3.38	0.17	32.31	0.56	1.38	1.35	1.33
500.00	3.58	3.45	0.13	27.04	0.36	1.37	1.29	1.28
600.00	3.62	3.52	0.10	23.52	0.22	1.40	1.25	1.25
800.00	3.58	3.56	0.03	20.65	0.20	1.39	1.17	1.16
1000.00	3.61	3.68	0.07	19.36	0.41	1.37	1.12	1.08
1200.00	3.69	3.84	0.15	19.24	0.93	1.34	1.14	1.04
1400.00	3.76	3.98	0.22	20.40	1.78	1.30	1.23	1.13
1500.00	3.84	4.07	0.23	21.76	2.34	1.29	1.29	1.18
1600.00	3.92	4.16	0.24	24.12	2.94	1.28	1.35	1.23
1700.00	4.02	4.25	0.24	28.51	3.61	1.27	1.40	1.29
1800.00	4.15	4.36	0.21	31.25	4.31	1.27	1.45	1.34
1900.00	4.33	4.49	0.18	26.03	4.98	1.32	1.49	1.38
2000.00	4.57	4.66	0.16	20.75	5.63	1.40	1.51	1.42



Mini-Circuits®

INTERNET <http://www.minicircuits.com>

P.O. Box 350166, Brooklyn, New York 11235-0003 (718) 934-4500 Fax (718) 332-4661

Distribution Centers NORTH AMERICA 800-654-7949 • 417-335-5935 • Fax 417-335-5945 • EUROPE 44-1252-832600 • Fax 44-1252-837010

ISO 9001 CERTIFIED

REV. C
M89618
SBTC-2-20 ED-8968
SBTC-2-20L ED-10035A/2
WZ/TD/CP
040212