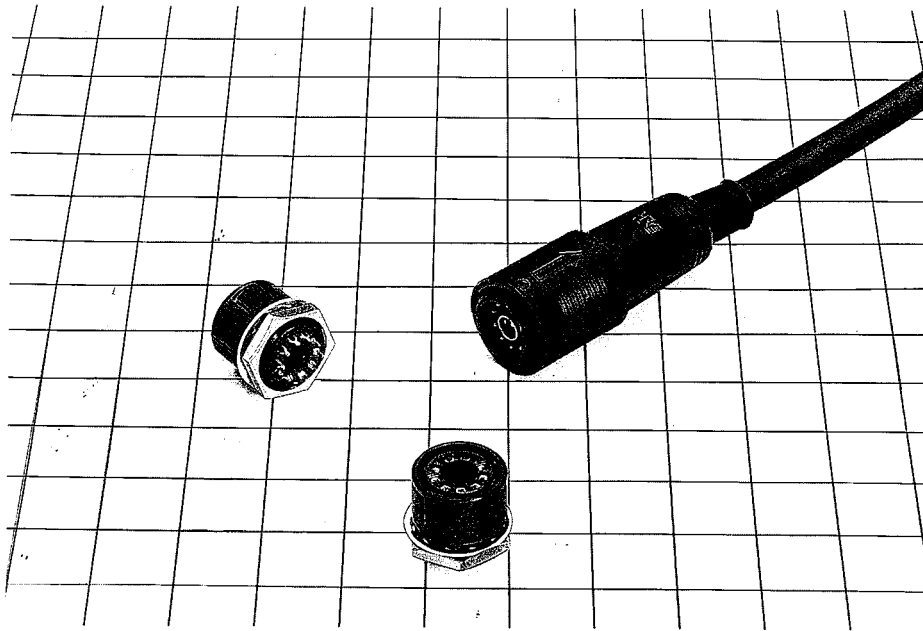


HRS RP Series

Circular Connector with Coaxial Switch/Model RP31 Connector

■ Scope

Developed for mobile telephones, the RP31 is a compact, light-weight, rigid circular plastic connector. It employs an easy-to-operate push-pull locking system, and is a 10-pin circular compound connector with a built-in coaxial switch.



■ Features :

- (1) Easy to insert and extract
Enhanced insertion and extraction operability due to the push-pull locking mechanism.
- (2) Prevents misinsertion
Securely guided by 5 keys during insertion, the RP31 completely prevents misinsertion.
- (3) High packaging density
The push-pull locking mechanism minimizes the required space between adjacent parts, thereby ensuring high packaging density.
- (4) Simple and slim design
Housing the cable clamp mechanism, the RP31 is simple and slim in appearance, and suits any type of device.

■ Main materials

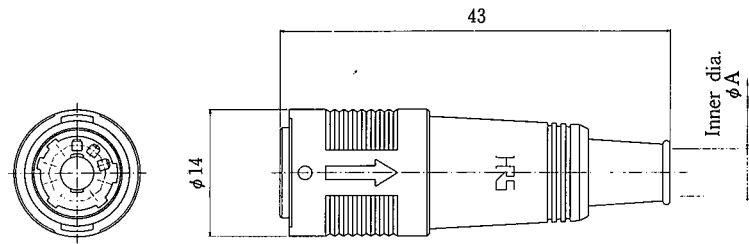
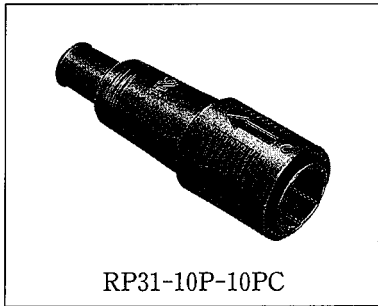
Part	Material	Finish
Shell & insulator	Polycarbonate resin	Black
Male terminal	Phosphor bronze	Silver-plated
Female terminal	Phosphor bronze	Silver-plated

■ Main specification

Item	Specification
Withstand voltage	300VAC for 1 minute
Current capacity	2A
Insulation resistance	1000M Ω or more
Contact resistance	20m Ω or more

Remarks 1:Withstanding voltage is shown at the test voltage.
Remarks 2:Insulation resistance measured at 200VDC.
Remarks 3:Contact resistance measured at 1 ADC.

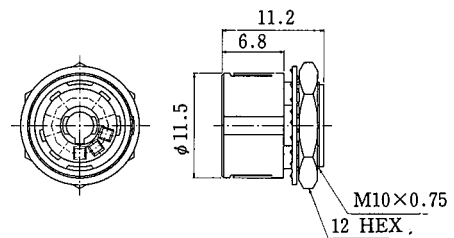
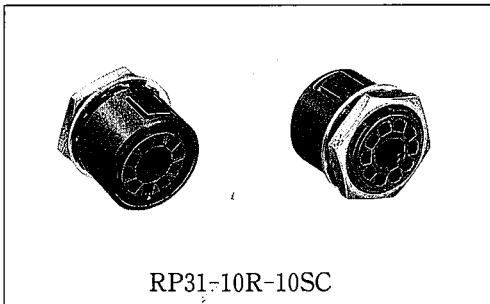
■ Plug (crimp type)



(Shape shown above is an example.)

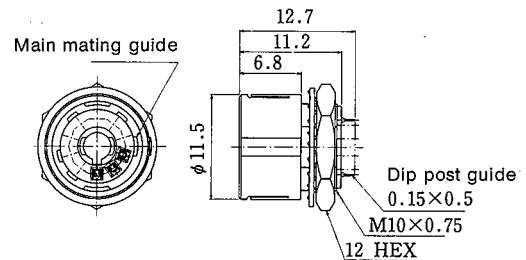
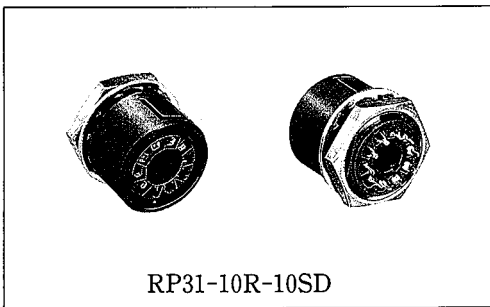
HRS No.	Part No.	No. of contacts	φ A	Applicable crimping terminal	Applicable coaxial terminal
113-5031-6	RP31-10P-10PC	10	5.2	HR10-PC-112	MS-114-C(P)

■ Socket (crimp type)



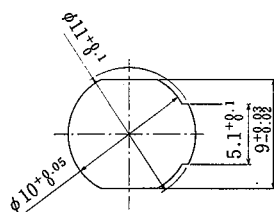
HRS No.	Part No.	No. of contacts	Applicable crimping terminal	Applicable coaxial SW
113-5032-9	RP31-10R-10SC	10	HR12-SC-112	MS-114

■ Socket (dip type)



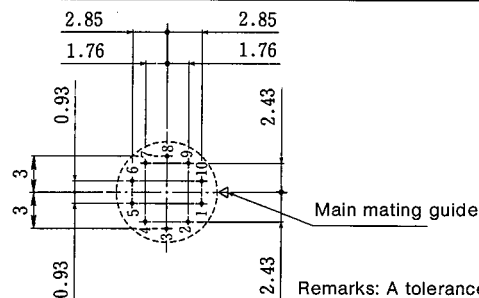
HRS No.	Part No.	No. of contacts	Applicable coaxial SW
113-5037-2	RP31-10R-10SD	10	MS-114

◆ Panel mounting hole



Dip-post arrangement 0.7~1.4

◆ Viewed from the mating side



Remarks: A tolerance of ± 0.05 mm is recommended for the arrangement dimensions on board.