

# Crystal filter

## QF 1.4-L0235/05



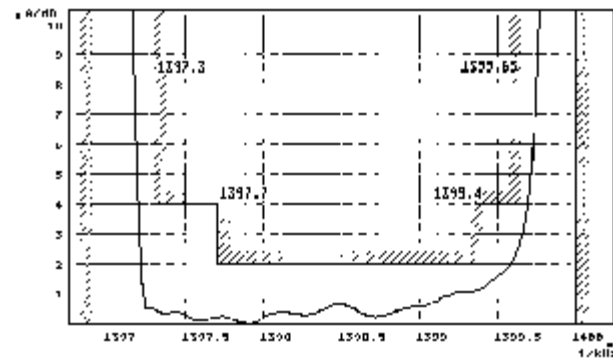
### Application

- 10 pol filter
- i.f.- filter
- use in mobile and stationary transceivers

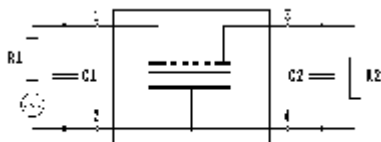
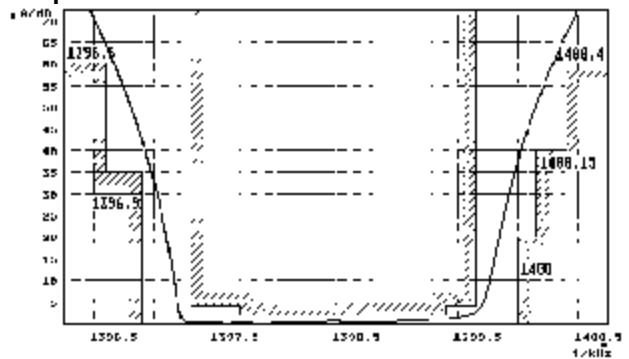
Limiting values		Unit	Value
Center frequency	fo	MHz	1.4
Insertion loss		dB	≤ 4.0
Pass band at 4.0 dB		kHz	-2.7...-0.35
Ripple in pass band	fo -2.3...-0.6 kHz	dB	≤ 2.0
Stop band attenuation	fo	dB	≥ 20
	fo - 3.1 kHz	dB	> 35
	fo +0.15 kHz	dB	> 40
	fo -3.4 kHz; fo+0.4 kHz	dB	> 60
Alternate attenuation		dB	> 60 except spurious
Terminating impedance Z			
R1    C1		Ohm/pF	1000    15
R2    C2		Ohm/pF	1000    15
Operating temp. range		°C	-15... +55

### Characteristics QF 1.4-L0235/05

#### Pass band



#### Stop band



- Pin connections:
- 1 Input
  - 2 Ground-Input
  - 3 Output
  - 4 Ground-Output

