

# Monolithic crystal filter

## MQF45.0-0800/02



### Application

- 4 pol filter
- i.f.- filter
- use in mobile and stationary transceivers

### Limiting values

		Unit	Value
Centre frequency	$f_c$	MHz	$45.0 \pm 800$ Hz
Insertion loss		dB	$\leq 3.0$
Pass band at 6.0 dB		kHz	$\pm 4.00$
Ripple in pass band	$f_c \pm 2.00$ kHz	dB	$\leq 1.5$
Stop band attenuation	$f_c \pm 10$ kHz	dB	$\geq 20$
Alternate attenuation		dB	$> 40$ except spurious

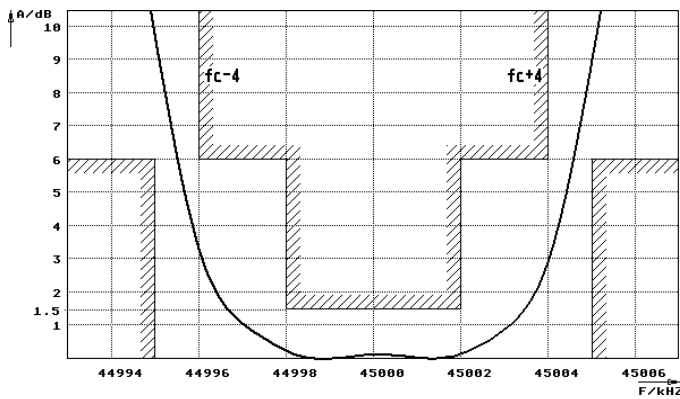
### Terminating impedance Z

R1    C1		Ohm/pF	200    18
R2    C2		Ohm/pF	200    18
Coupling capacitance	Ck	pF	35

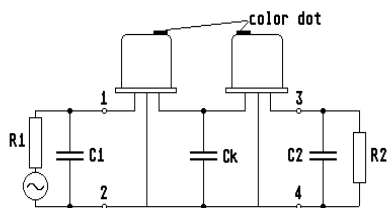
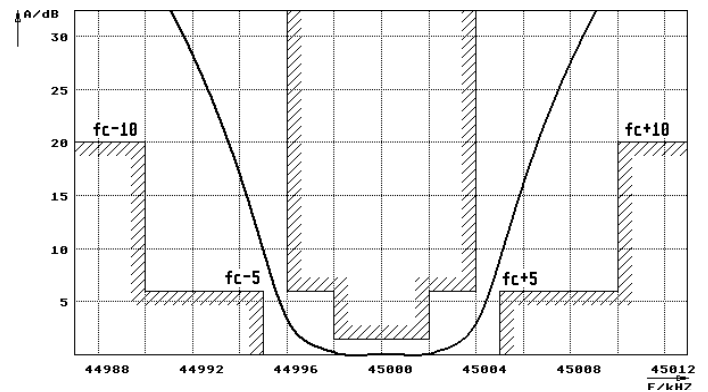
Operating temp. range		°C	-20... +70
-----------------------	--	----	------------

### Characteristics MQF45.0-0800/02

#### Pass band



#### Stop band



Pin connections: 1 Input  
2 Input-E  
3 Output  
4 Output-E

