

# Monolithic crystal filter

## MQF40.083-1000/07



### Application

- 4 pol filter
- i.f.- filter
- use in mobile and stationary transceivers

### Limiting values

		Unit	Value
Center frequency	$f_0$	MHz	40.083
Insertion loss		dB	$\leq 3.0$
Pass band at 1.0 dB		kHz	$\pm 2.00$
Ripple in pass band	$f_0 \pm 2.00$ kHz	dB	$\leq 1.0$
Stop band attenuation	$f_0 \pm 10$ kHz	dB	$\geq 20$
	$f_0 \pm 25$ kHz	dB	$> 40$
Alternate attenuation		dB	$> 40$

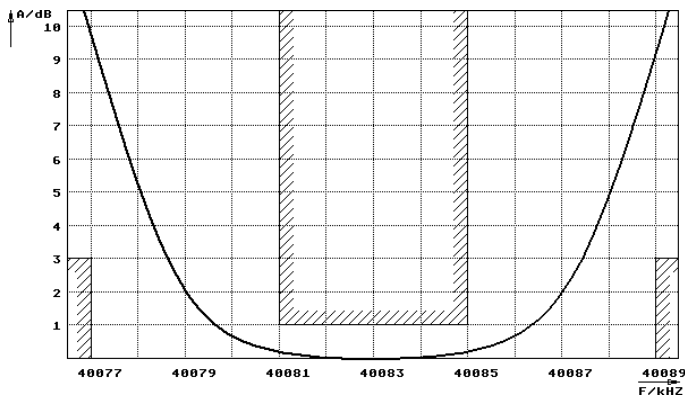
### Terminating impedance Z

R1    C1	balanced	Ohm/pF	100    0
R2    C2	balanced	Ohm/pF	100    0

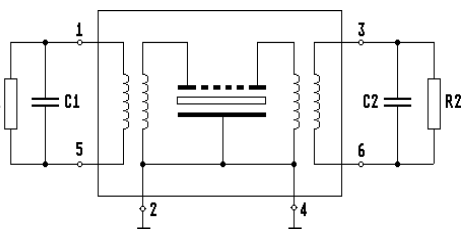
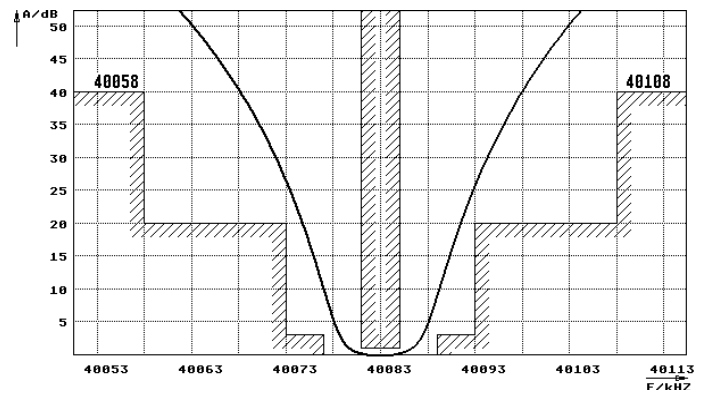
Operating temp. range		°C	0... +70
-----------------------	--	----	----------

### Characteristics MQF40.083-1000/07

#### Pass band



#### Stop band



Pin connections: 1 Input      5 Input  
 2 Gnd                      3 Output      6 Output  
 4 Gnd

