

Monolithic crystal filter

MQF21.4-2000/02

Application

- 4 pol filter
- i.f.- filter
- use in mobile and stationary transceivers

Limiting values

		Unit	Value
Center frequency	f_0	MHz	21.4
Insertion loss		dB	≤ 1.5
Pass band at 3.0 dB		kHz	± 10.00
Ripple in pass band	$f_0 \pm 7.00$ kHz	dB	≤ 0.5
Stop band attenuation	$f_0 \pm 35$ kHz	dB	≥ 40
Alternate attenuation	$f_0 - 200$ kHz	dB	> 65
	$f_0 + 350$ kHz	dB	> 65

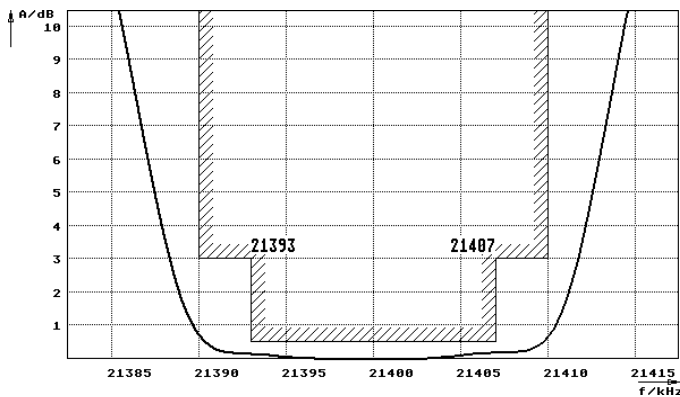
Terminating impedance Z

R1 C1		Ohm/pF	1900 1
R2 C2		Ohm/pF	1900 1
Coupling capacitance	Ck	pF	5.2

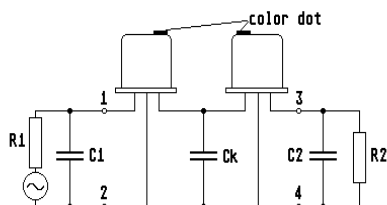
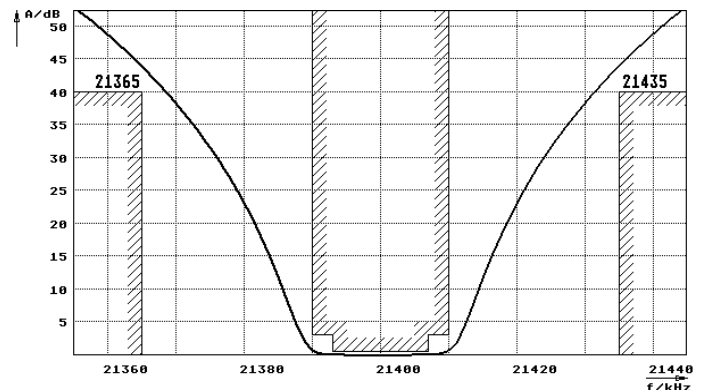
Operating temp. range		$^{\circ}\text{C}$	-20... +70
-----------------------	--	--------------------	------------

Characteristics MQF21.4-2000/02

Pass band



Stop band



Pin connections: 1 Input
2 Input-E
3 Output
4 Output-E

