

Monolithic crystal filter

MQF21.4-1500/48



Application

- 4 pol filter
- i.f.- filter
- use in mobile and stationary transceivers

Limiting values

		Unit	Value
Center frequency	f_0	MHz	21.4
Insertion loss		dB	≤ 2.5
Pass band at 3.0 dB		kHz	± 7.50
Ripple in pass band	$f_0 \pm 5.00$ kHz	dB	≤ 1.0
Stop band attenuation	$f_0 \pm 25$ kHz	dB	≥ 40

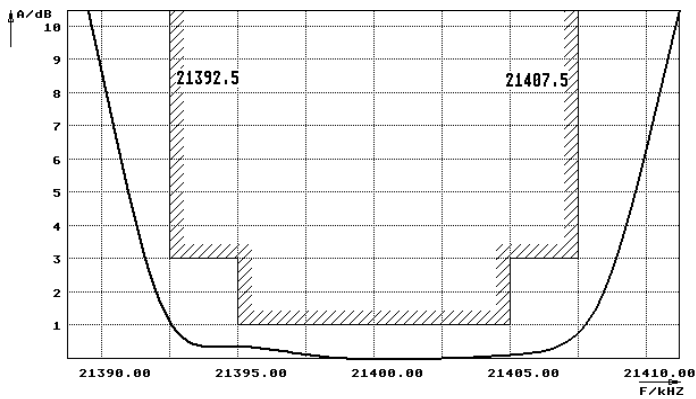
Terminating impedance Z

R1 C1		Ohm/pF	1600 2
R2 C2		Ohm/pF	1600 2
Coupling capacitance	Ck	pF	7.0

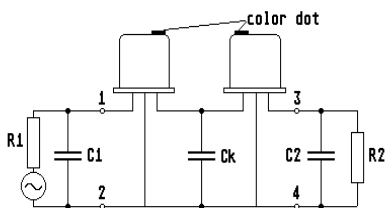
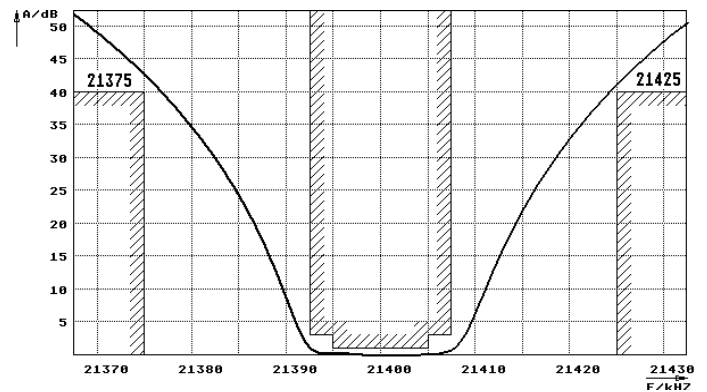
Operating temp. range		° C	-20... +70
-----------------------	--	-----	------------

Characteristics MQF21.4-1500/48

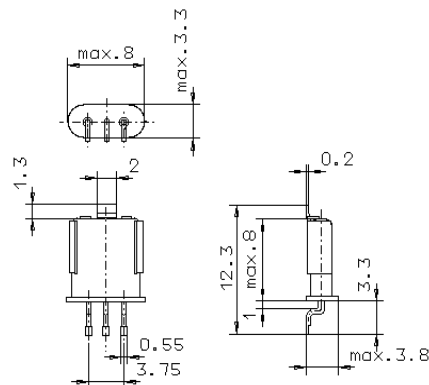
Pass band



Stop band



Pin connections: 1 Input
2 Input-E
3 Output
4 Output-E



GH9/S